

## SINK BASE PULLOUT - NOT DOOR MOUNTING

<b>TOOLS REQUIRED:</b>     	<b>ESTIMATED ASSEMBLY TIME:</b> <b>20 MIN</b>	<b>CARE AND MAINTENANCE:</b> <b>CLEAN WITH A DAMP CLOTH AND WIPE PARTS DRY</b>
--	--	---

1) Measure how far the hinge sticks out into the cabinet opening and record that number (A).

2) Take the number from step one (A) and add 4-3/4" (121 mm).

(A) + 4-3/4 (121 mm) = (B)

3) Place template into cabinet and align the front edge per cabinet type:

**a. Overlay - Place at the front outside edge of cabinet**

**b. Inset door - Set back the thickness of the cabinet door**

From the hinge side of the cabinet use measurement (B) to align center line.

4) Use an awl or pencil to mark the (4) screw locations and remove the template.

5) Pre-drill (4) 5/64" holes at screw locations.

6) Attach handle to frame (See Fig A).

7) Place frame in cabinet, lining up the holes and install screws.

8) Snap in (4) plastic caps to cover holes (See Fig B).

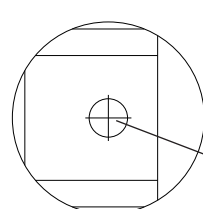


Fig. A

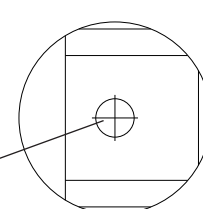
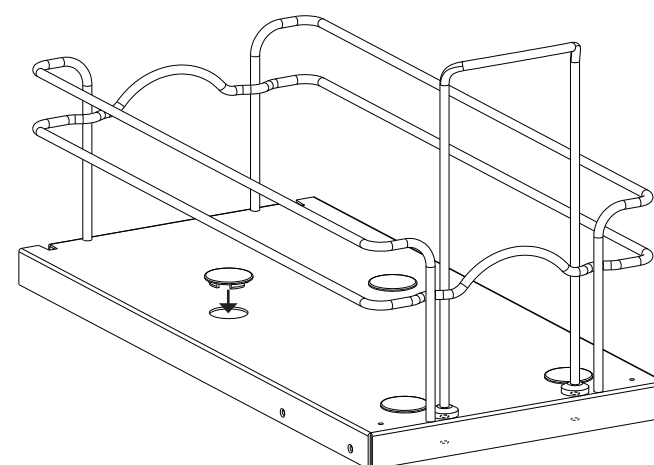
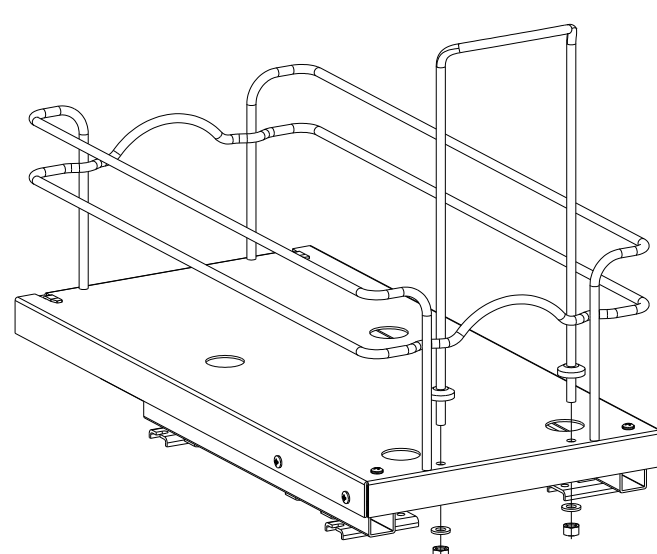


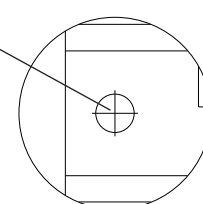
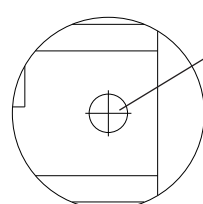
Fig. B

Screw Locations



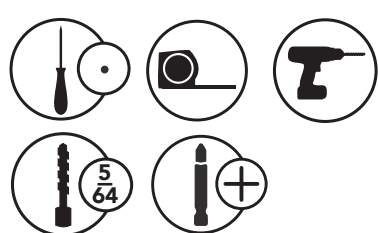
Screw Locations

Center line



## SINK BASE PULLOUT - DOOR MOUNTING

### TOOLS REQUIRED:



ESTIMATED ASSEMBLY  
TIME:

**20 MIN**

### CARE AND MAINTENANCE:

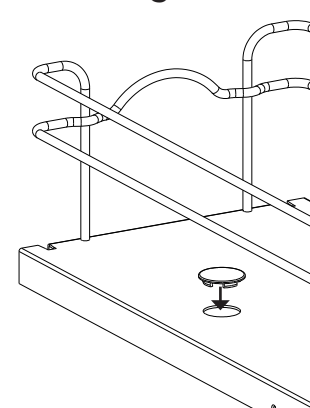
CLEAN WITH A DAMP CLOTH  
AND WIPE PARTS DRY

- 1) Place template into cabinet and align the front edge per cabinet type:
  - a. **Overlay - Place at the front outside edge of cabinet**
  - b. **Inset door - Set back the thickness of the cabinet door**

Align center line of template to center of opening.

- 2) Use an awl or pencil to mark the (4) screw locations and remove the template.
- 3) Pre-drill (4) 5/64" holes at screw locations.
- 4) Place frame in cabinet, lining up the holes and install screws.
- 5) Snap in (4) plastic caps to cover holes (See Fig A).

Fig. A



Screw Locations



### Door Mount Instructions:

- 1) Remove (2) screws from side of unit (See Fig B).
- 2) Install RV- Bracket to side of unit using (2) screws from step 1 (See Fig C).
- 3) Install Door Mount Bracket with (1) 1/4-20 pan head screw at bottom and (1) 1/4-20 pan head screw with washer at top (See Fig D).
- 4) Repeat steps 1-3 for the other side.
- 5) Follow instructions that came with door mount kit (sold separately).

Fig. B

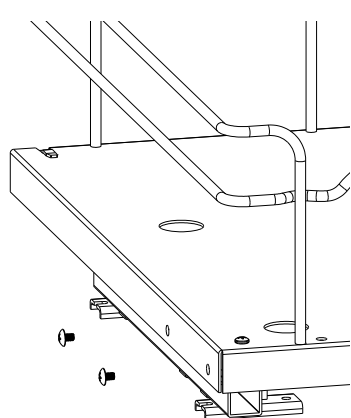


Fig. C

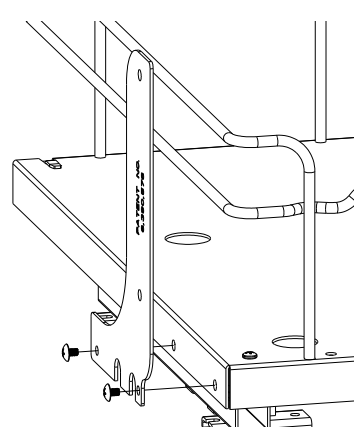
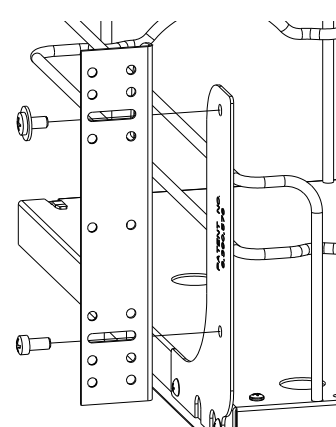


Fig. D



Screw Locations



Center line

T-5SBWC-0417