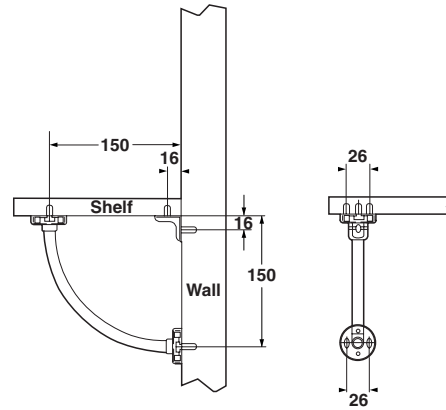


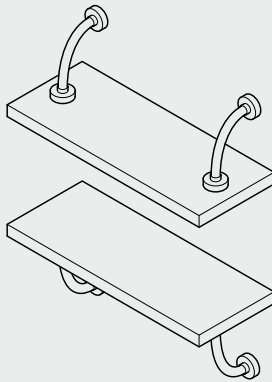


## Shelf Bracket



### Connectors and Shelf Supports

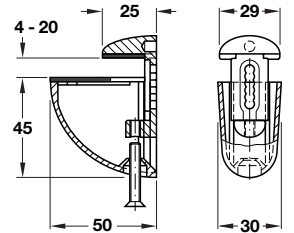
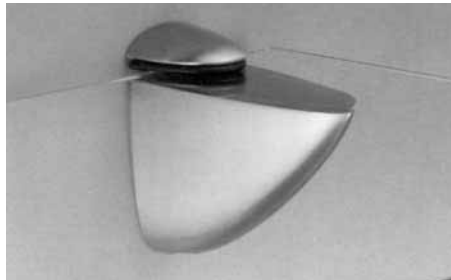
- Mounts above or below shelf
- Load capacity: 70 kg(154 lbs.) / m<sup>2</sup>
- Adjustment in depth and height possible



### Shelf Bracket

Mounts above or below shelf.  
Oblong holes allow for the regulation of minor inaccuracies when mounting.  
Complete set of installation material and cover caps.  
Finish: steel matt, chromium-plated  
Cover caps: nylon chrome-plated

Cat. No. 287.72.200  
Packing: 1 pc. with mounting screws



### Clamping Bracket

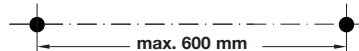
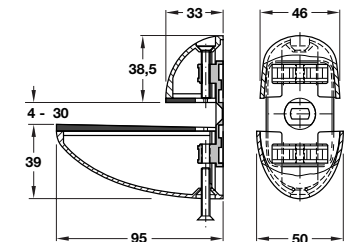
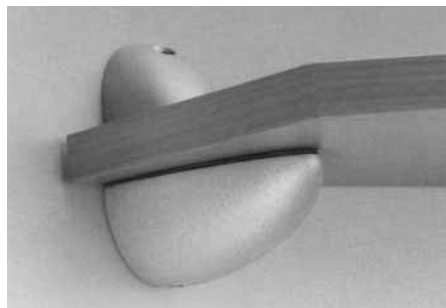
for 4 - 20 mm shelf thickness  
load capacity up to 18 lbs. each pair  
max. shelf depth 150 mm  
vertically adjustable  
Finish: zinc alloy with intermediate layers of plastic, black

	Cat. No.
chrome-plated, polished	287.58.200
stainless steel color	287.58.000
aluminum RAL 9006	287.58.210

Packing: 2 pcs. with fastening material



Check mounting surface to ensure it has enough load capacity before fixing the clamping brackets.



### Clamping Bracket

for 4 - 30 mm shelf thickness  
load capacity up to 66 lbs. each pair  
max. shelf depth 250 mm  
vertically and horizontally adjustable  
Finish: zinc alloy with intermediate layers of plastic, black

	Cat. No.
chrome-plated, polished	287.59.200
stainless steel color	287.59.000
aluminum RAL 9006	287.59.210

Packing: 2 pcs. with fastening material

Dimensional data not binding.  
We reserve the right to alter specifications without notice.