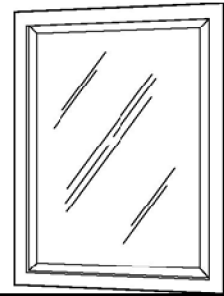




## URBAN STEEL

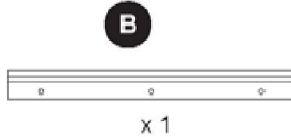


### **PACKAGE CONTENTS**



**A**  
x 1

Mirror



**B**  
x 1  
Mounting Bracket

### **HARDWARE CONTENTS**



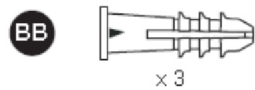
**AA**  
x 3

Mounting Screw



**CC**  
x 1

Bubble Level



**BB**  
x 3

Plastic Anchor

### **SAFETY INFORMATION**

Please read and understand this entire installation instruction.

### **WARNING**

Safely discard all packing material. Keep small parts away from children. Safety glasses are required during installation.

### **CAUTION**

Exercise caution when drilling holes into wall to avoid electrical wiring. If an electrical wire is found, stop installation and call a professional electrician.

### **PREPARATION**

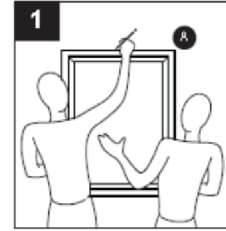
Before beginning installation of product, make sure all parts are present. Compare parts with package contents list and hardware contents list. If any part is missing or damage, do not attempt to assemble or install the product.

.....Continued on back page

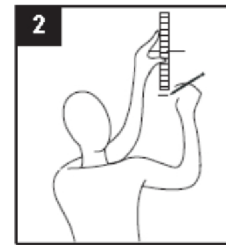
## ASSEMBLY INSTRUCTIONS

---

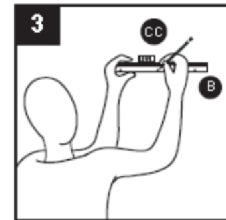
1. With the assistance of another, hold mirror (A) in the desired location and lightly mark with a pencil (not included) the wall at the top center edge of the mirror (A)



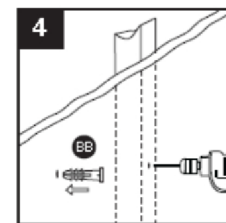
2. Using a ruler or measuring tape (neither included), measure 3 inches down from the initial mark and place a second mark.



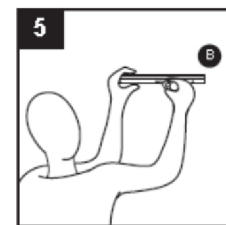
3. Align the bottom of the mounting bracket (B) to the second mark, using bubble level (CC) to make sure mounting bracket (B) is level. Mark the three screw holes onto the wall.



4. Drill 3/16 in. pilot holes at marked screw-hole locations.  
If not stud is present, install plastic anchors (BB) into holes.



5. Attach mounting bracket (B) to wall with mounting screws (AA).  
Use bubble level (CC) again to ensure mounting bracket (B) is level.



6. Carefully hang mirror (A) onto mounting bracket (B).

