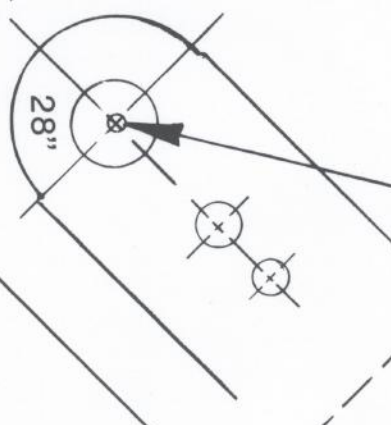
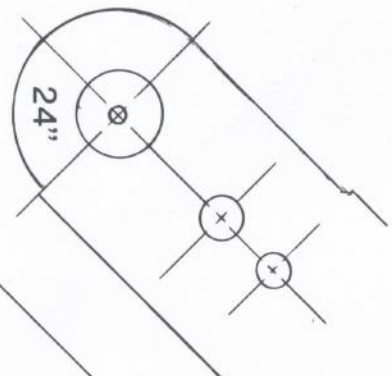
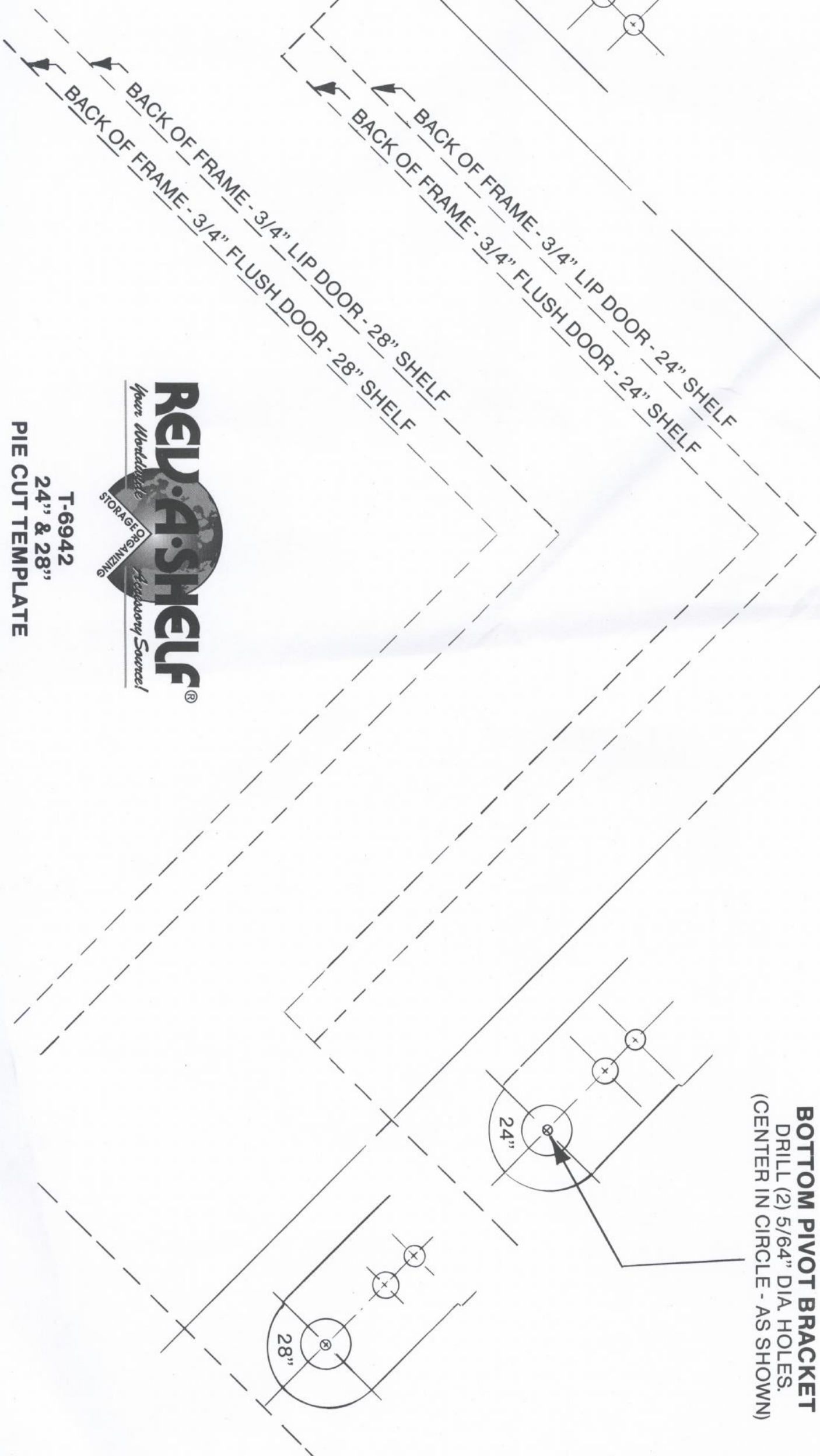
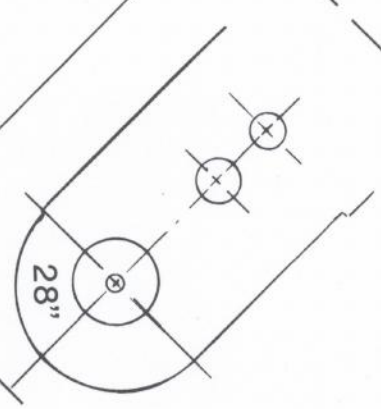
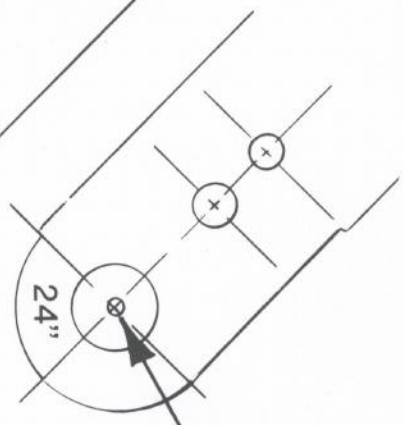


**28"**  
**BOTTOM PIVOT BRACKET**  
DRILL (2) 5/64" DIA HOLES.  
(CENTER IN CIRCLE - AS SHOWN)



- INSTRUCTIONS:**
- A. CHOOSE TYPE OF DOOR (FLUSH OR LIP)
  - B. CUT TEMPLATE ALONG DOTTED LINE FOR DESIRED SHELF & CABINET SIZE.
  - C. LINE UP TEMPLATE WITH PIE-CUT IN THE PANELS, THEN MARK SCREW HOLES (IN CENTER OF CIRCLES - AS SHOWN) FOR TOP & BOTTOM PIVOT BRACKETS ON PANELS.

**24"**  
**BOTTOM PIVOT BRACKET**  
DRILL (2) 5/64" DIA HOLES.  
(CENTER IN CIRCLE - AS SHOWN)



**RED-A-SHELF®**  
*Your Worldwide*  
STORAGE ORGANIZING *Accessory Source!*

T-69942  
24" & 28"  
PIE CUT TEMPLATE