

Round Closet Rods

660 Series Heavy-Duty Round Closet Rods

660 Series Heavy-Duty Round Closet Rod

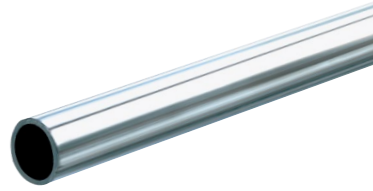
Diameter: Outside 1-1/16"; Inside 29/32"; Wall thickness 0.087"

Finish: Stainless Steel (SS)

Origin: Made in the USA

Packed: 6 per carton

Features: Steel core with solid stainless steel



660 Series Heavy-Duty Round Closet Rods	
Length	Stainless Steel (SS)
48"	660 SS 48
60"	660 SS 60
72"	660 SS 72
96"	660 SS 96
120"	660 SS 120
144"	660 SS 144

750 Series Heavy-Duty Round Closet Rods

750 1 Heavy-Duty Round Closet Rod

Diameter: Outside: 1-1/16"; Inside: 29/32"; Wall thickness: 0.075"

Finish: Chrome (CHR)

Packed: 6 per carton



750 5 Heavy-Duty Round Closet Rod

Diameter: Outside 1-5/16"; Inside 1-5/32"; Wall thickness 0.075"

Finish: Chrome (CHR)

Packed: 6 per carton

750 Series Heavy-Duty Round Closet Rods		
Length	750 1 Series	750 5 Series
72"	750 1 72	750 5 72
96"	750 1 96	750 5 96
120"	750 1 120	750 5 120
144"	750 1 144	750 5 144

770 Series Extra-Duty Round Closet Rods

770 1 Extra-Duty Round Closet Rod

Diameter: Outside: 1-1/16"; Inside: 27/32"; Wall thickness: 0.106"

Finish: Chrome (CHR)

Packed: 6 per carton



770 5 Extra-Duty Round Closet Rod

Diameter: Outside: 1-5/16"; Inside: 61/64"; Wall thickness: 0.106"

Finish: Chrome (CHR)

Packed: 6 per carton

770 Series Extra-Duty Round Closet Rods		
Length	770 1 Series	770 5 Series
48"	770 1 48	-
60"	770 1 60	-
72"	770 1 72	770 5 72
96"	770 1 96	770 5 96
120"	770 1 120	770 5 120
144"	770 1 144	770 5 144