

**PLATUS SERIES**

**Fire Clay Undermount Small Bar/Prep Sink**

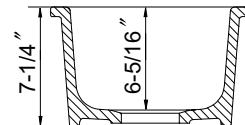
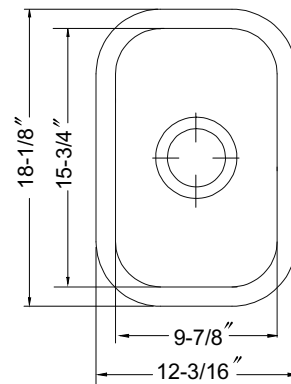
**Model** PTB-1318 WH - White  
PTB-1318 BQ - Biscuit



PTB-1318

**FEATURES**

- Non-porous glossy surface
- 6-5/16" depth
- 3-1/2" drain opening
- Chip, crack and scratch resistant
- 2 distinctive colors
- Fits 18" sink base
- Supplied with fasteners and instructions
- No cut out template is supplied as each sink dimension will vary due to the nature of fireclay manufacturing process.
- Lifetime Limited Warranty



**OPTIONAL COLORS**



**White**

**Biscuit**

Color variations possible due to printing constraints.

OVERALL DIMENSIONS	EACH BOWL	PACKAGING*	WEIGHT*
12-3/16" x 18-1/8"	9-7/8" x 15-3/4"	1/10 pcs.	30/340lbs.

\*Standard packaging: Single boxed /Pallet of single boxed.  
All dimensions are in inches. Specifications subject to change without notice.

**OPTIONAL ACCESSORIES**

Bottom Grid: BG-7010  
Strainer : 190-9180

Project/Job name \_\_\_\_\_

Architect/Engineer \_\_\_\_\_

Contractor \_\_\_\_\_

Model \_\_\_\_\_ Q'ty \_\_\_\_\_

Notes \_\_\_\_\_