



ITEM #: _____ QTY: _____
 MODEL #: _____
 PROJECT NAME: _____

020218

∴kitchensource.com
 ☎ 1.800.667.8721

"EBSW7R43" ENCLOSED BASE TABLES
WOOD TOP - SLIDING - 1.75" THICK - 4" RISER ALL 3 SIDES



FEATURES:

- 1-3/4" THICK HARD ROCK MAPLE TOP WITH 4" COVERED REAR AND SIDE RISERS
- SLIDING DOOR STYLE
- MAPLE TOP IS FINISHED WITH PENETRATING OIL WITH OPTIONAL NATURAL CLEAR VARNIQUE FINISH
- STAINLESS STEEL CABINET & UNDERSHELF, TYPE 300 STAINLESS STEEL WITH #4 POLISH, SATIN FINISH
- UNDERSHELF IS SECURED IN A FIXED POSITION, 10" ABOVE FLOOR
- SHIPPED STANDARD WELDED SET-UP
- NSF CERTIFIED

CONSTRUCTION:

- TOP: 1-3/4" THICK EDGE GRAIN HARD ROCK MAPLE WITH 4" COVERED REAR AND SIDE RISERS
- CABINET: STAINLESS STEEL CABINET IS TIG WELDED, EXPOSED WELDS ARE POLISHED TO MATCH ADJACENT SURFACE



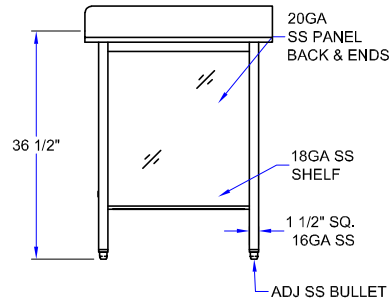
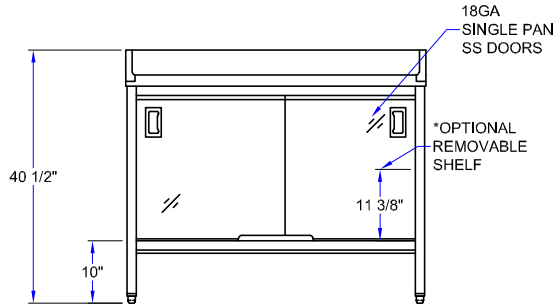
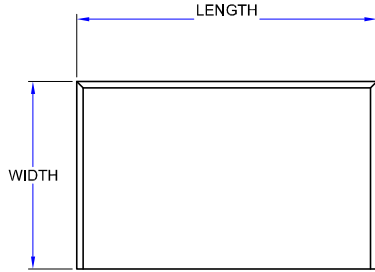
MATERIAL:

- TOP: 1-3/4" THICK HARD ROCK MAPLE WITH 4" COVERED REAR AND SIDE RISERS, FINISHED WITH PENETRATING OIL
- DOORS: 18 GAUGE TYPE 300 STAINLESS STEEL, #4 POLISH WITH SATIN FINISH
- SHELF: 18 GAUGE TYPE 300 STAINLESS STEEL, #4 POLISH WITH SATIN FINISH
- LEGS: 1-1/2" SQUARE O.D., 16 GAUGE TYPE 300 TUBULAR STAINLESS STEEL
- PANELS: 20 GAUGE TYPE 300 STAINLESS STEEL, #4 POLISH WITH SATIN FINISH
- FEET: 1" ADJUSTABLE STAINLESS STEEL FEET

ENCLOSED BASE TABLES

24" WIDTH	QTY	30" WIDTH	QTY
EBSW7R43-2436		EBSW7R43-3036	
EBSW7R43-2448		EBSW7R43-3048	
EBSW7R43-2460		EBSW7R43-3060	
EBSW7R43-2472		EBSW7R43-3072	
EBSW7R43-2484		EBSW7R43-3084	
EBSW7R43-2496		EBSW7R43-3096	
EBSW7R43-24108		EBSW7R43-30108	
EBSW7R43-24120		EBSW7R43-30120	
EBSW7R43-24132		EBSW7R43-30132	
EBSW7R43-24144		EBSW7R43-30144	

DETAILED SPECIFICATIONS



ENCLOSED BASE TABLES

LENGTH	LEGS	24" WIDTH	WEIGHT (LBS)	30" WIDTH	WEIGHT (LBS)
36"	4	EBSW7R43-2436	140	EBSW7R43-3036	164
48"	4	EBSW7R43-2448	150	EBSW7R43-3048	174
60"	4	EBSW7R43-2460	190	EBSW7R43-3060	224
72"	4	EBSW7R43-2472	225	EBSW7R43-3072	270
84"	6	EBSW7R43-2484	265	EBSW7R43-3084	306
96"	6	EBSW7R43-2496	305	EBSW7R43-3096	341
108"	6	EBSW7R43-24108	338	EBSW7R43-30108	401
120"	6	EBSW7R43-24120	370	EBSW7R43-30120	460
132"	6	EBSW7R43-24132	402	EBSW7R43-30132	519
144"	6	EBSW7R43-24144	434	EBSW7R43-30144	578

MODEL # STRUCTURE

7 = 1.75" THICK

W = WOOD

S = SLIDING

EB = ENCLOSED BASE TABLE

R43 = 4" RISER ALL 3 SIDES

24 = WIDTH - FRONT TO BACK

36 = LENGTH - LEFT TO RIGHT

EBSW7R43-2436

SOME UNITS SHIP UNASSEMBLED FOR REDUCED SHIPPING COST. ALL DIMENSIONS ARE TYPICAL. TOLERANCE +/- .500"

John Boos & Co. is constantly engaged in a program of improving products and therefore reserves the right to change specifications without prior notice.

