



24"L	Qty	30"L	Qty	36"L	Qty
JNS01		JNS08		JNS15	
JNS02		JNS09		JNS16	
JNS03		JNS10		JNS17	
JNS04		JNS11		JNS18	
JNS05		JNS12		JNS19	
JNS06		JNS13		JNS20	
JNSA		JNS13A		JNS20A	
JNS07		JNS14		JNS21	

FEATURES:

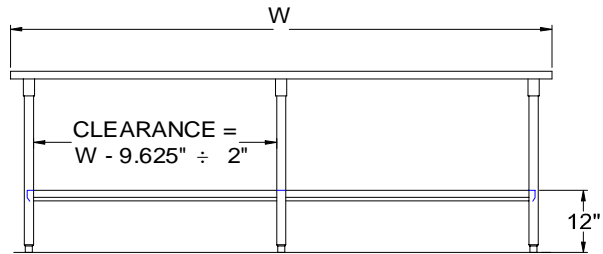
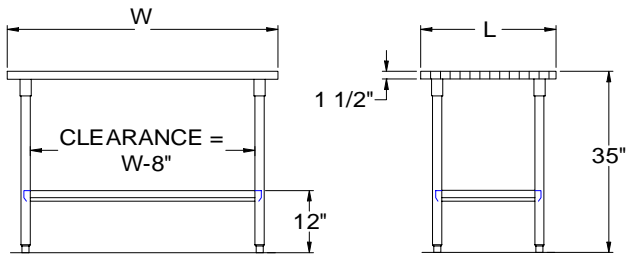
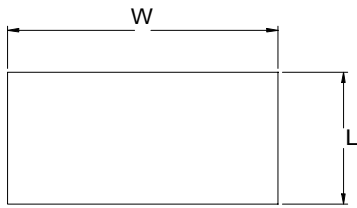
- * 1 1/2" Thick Hard Rock Maple Top
top style "SCT" flat top
- * Maple top is finished with penetrating oil
with optional natural clear Varnique Finish
- * Galvanized base and undershelf,
- * Undershelf is secured in a fixed position, 12" above floor
- * Adjustable bullet feet
- * Shipped knocked-down, easy - to - assemble
- * Optional drawers, casters, pot racks, etc. available
- * All models are approved by the National Sanitation Foundation

MATERIAL:

- Top: Laminated Hard Rock Maple
- Shelf: 18 gauge Galvanized Steel
** 6 ft. table only, 16 gauge galvanized steel
- Legs: 16 gauge Galvanized Steel
- Gussets: Galvanized Steel
- Feet: 1" adjustable galvanized bullet feet

OPTIONAL ACCESSORIES

	MODEL #	Qty
DRAWER		
DRAWER LOCK		
ADJUSTABLE SHELF		
CASTERS		
OVERSHELVES		
POT RACK		



All units ship unassembled for reduced shipping cost.
Units 7 ft. and larger are furnished with six legs.
All dimensions are typical.
Tolerance +/- .500".

1-1/2" MAPLE TOP & UNDERSHELF

Finished size of undershelf.
Shelf length = length minus 4.25"
Shelf width = width minus 4.875"

W	24" L	WT.	30" L	WT.	36" L	WT.
36	JNS01	72	JNS08	86	JNS15	100
48	JNS02	90	JNS09	109	JNS16	127
60	JNS03	109	JNS10	132	JNS17	155
72	JNS04	133	JNS11	161	JNS18	190
84	JNS05	146	JNS12	178	JNS19	214
96	JNS06	164	JNS13	201	JNS20	239
108	JNS06A	187	JNS13A	229	JNS20A	271
120	JNS07	209	JNS14	256	JNS21	303



John Boos is constantly engaged in a program of improving products and therefore reserves the right to change specification without prior notice

March 2009