



**John**  
**BOOS**  
Since 1887

ITEM #: \_\_\_\_\_ QTY: \_\_\_\_\_

MODEL #: \_\_\_\_\_

PROJECT NAME: \_\_\_\_\_

052118

## "CU-BB" BUTLERS BLOCK

### FEATURES:

- NORTHERN HARD ROCK MAPLE END GRAIN TOP, STANDARD BOOS BLOCK CREAM FINISH WITH BEESWAX
- NATURAL SLATTED SHELF
- 2 BRONZE TOWEL HOOKS
- DISTRESSED FINISH
- SEE BASE COLOR SPEC SHEET FOR COLOR OPTIONS

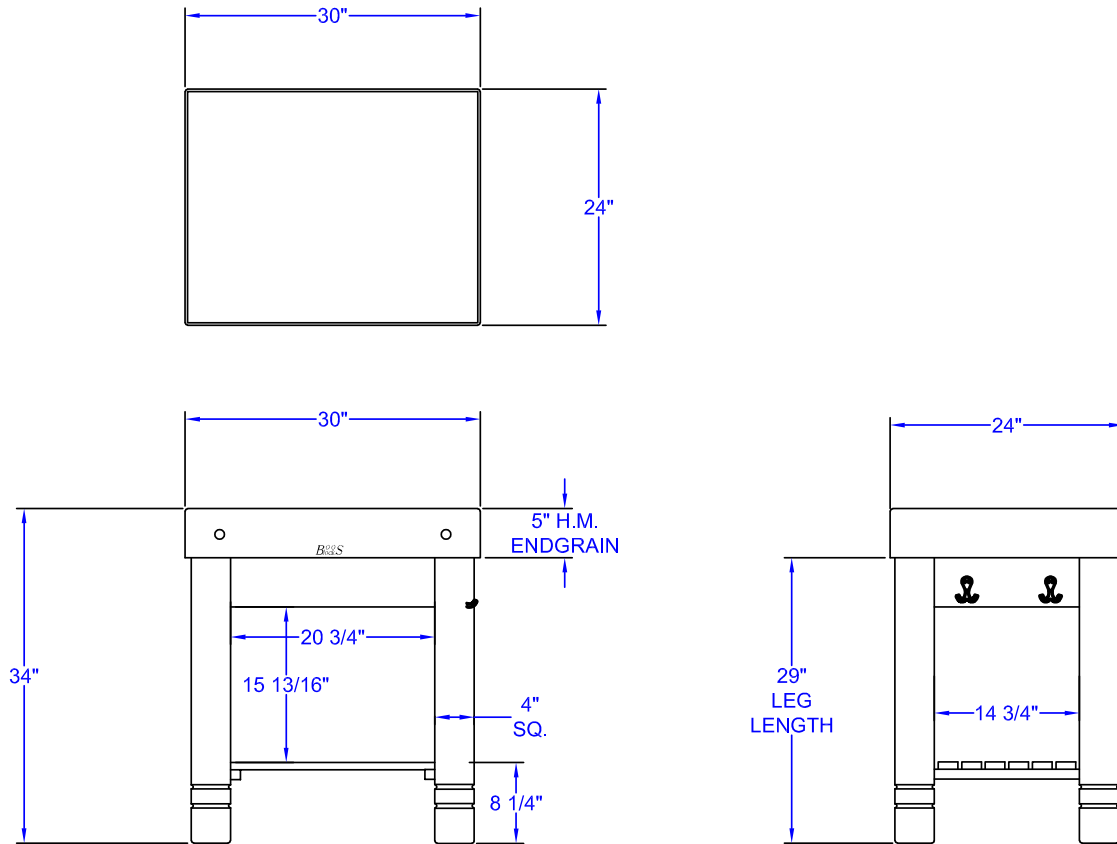


CU-BB3024-BK

### **BUTLERS BLOCK**

MODEL #	QTY
CU-BB3024	

# DETAILED SPECIFICATIONS



## BUTLERS BLOCK

MODEL #	SIZE	HEIGHT	WEIGHT (LBS)
CU-BB3024	30" X 24" X 5"	34"	188

SOME UNITS SHIP UNASSEMBLED FOR REDUCED SHIPPING COST. ALL DIMENSIONS ARE TYPICAL. TOLERANCE +/- .500"  
 John Boos & Co. is constantly engaged in a program of improving products and therefore reserves the right to change specifications without prior notice.



Boos  
lock

AQ AutoQuotes

**∴kitchensource.com**  
 1.800.667.8721