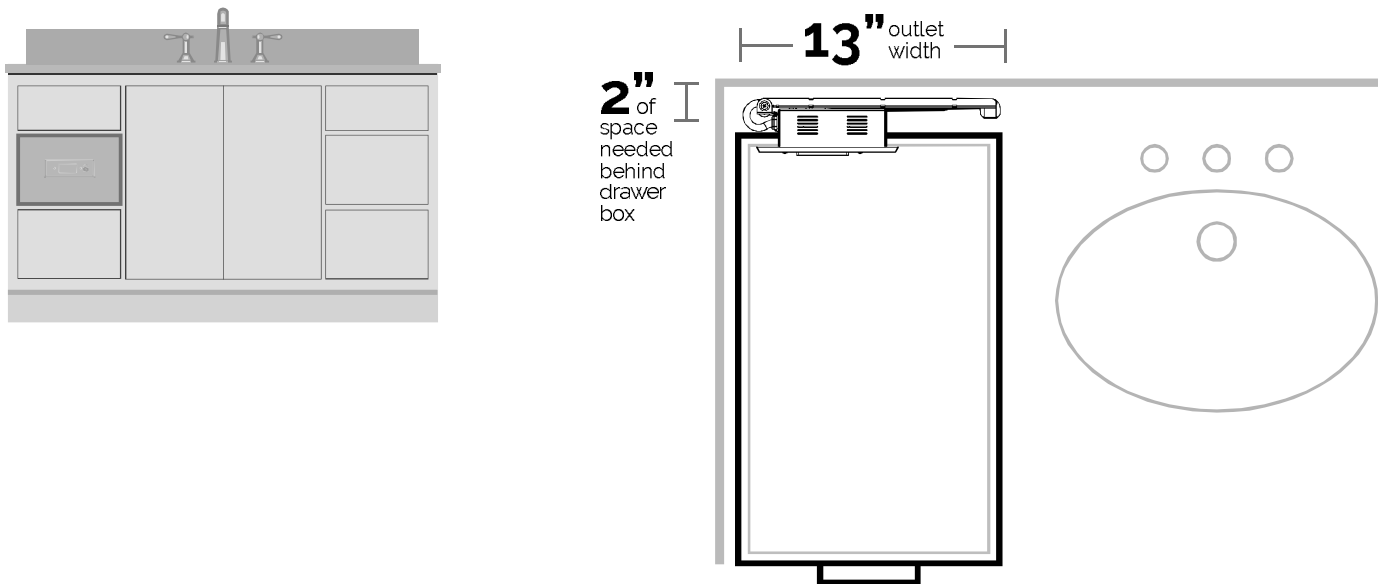


Project Planning Cards by Room

Bathrooms

Bathrooms Tall Vanity Drawer Project Planning Card

Docking Drawer Blade Series outlets can be specified into tall vanity drawers to stow and power hair dryers and other styling tools while keeping vanity surfaces clear of cord and device clutter.



Pro Tip

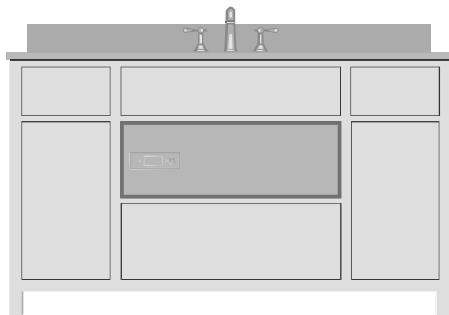
Studies show that the top drawer in a vanity is used to store items that are used every day such as toothbrushes, tooth paste, cotton swabs, dental floss, brushes and combs.

The second drawer in a vanity is used to store items such as hair dryers, curling irons, hair products, etc. that are only used occasionally. This is the most popular location for in-drawer outlets.

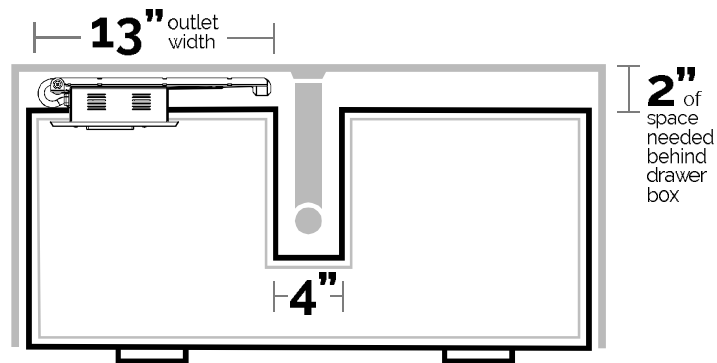
Most Popular Outlet:
1514-160

Bathrooms U-Shaped Drawer Project Planning Card

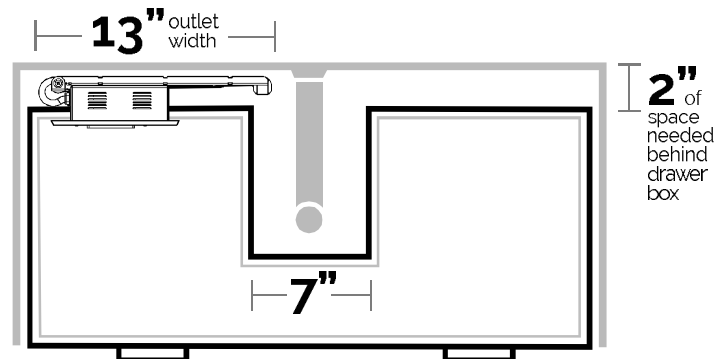
Docking Drawer Blade Series outlets can be specified into U-shaped drawers to help utilize awkward drawer space created by sink plumbing fixtures.



Option 1
without channel



Option 2
with channel



Pro Tip

The back of the U-Shaped drawer box can be less than 13" assuming the cable management arms do not interfere with any plumbing fixtures, as seen in Option 2.

Most Popular Outlet:
1514-160