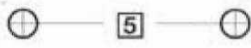
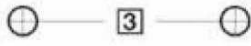




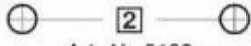
Montageanleitung für Einbau-Abfallsammler
 Fitting instructions for Built-in Waste Bin
 Instructions de montage pour Poubelle à encastrer
 Montageplan voor inbouwemmer



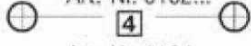
Art.-Nr. 0105...



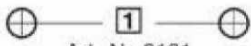
Art.-Nr. 0103...



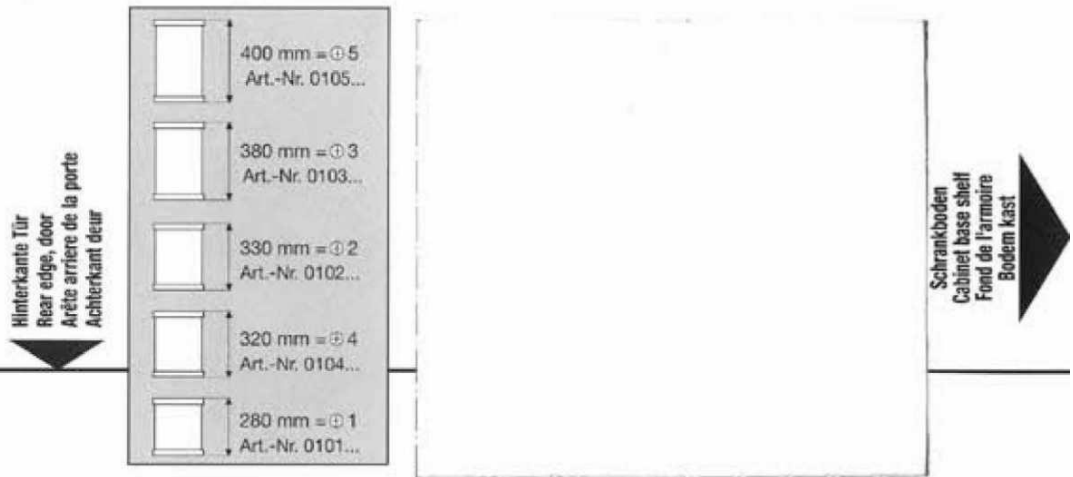
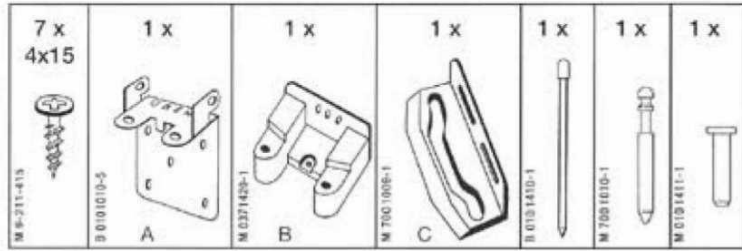
Art.-Nr. 0102...



Art.-Nr. 0104...



Art.-Nr. 0101...



Die Pflege und Reinigung kann mit handelsüblichen Reinigungsmitteln erfolgen.

The waste bin can be cleaned with commercial household cleaner.

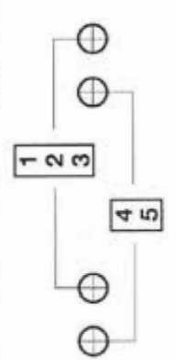
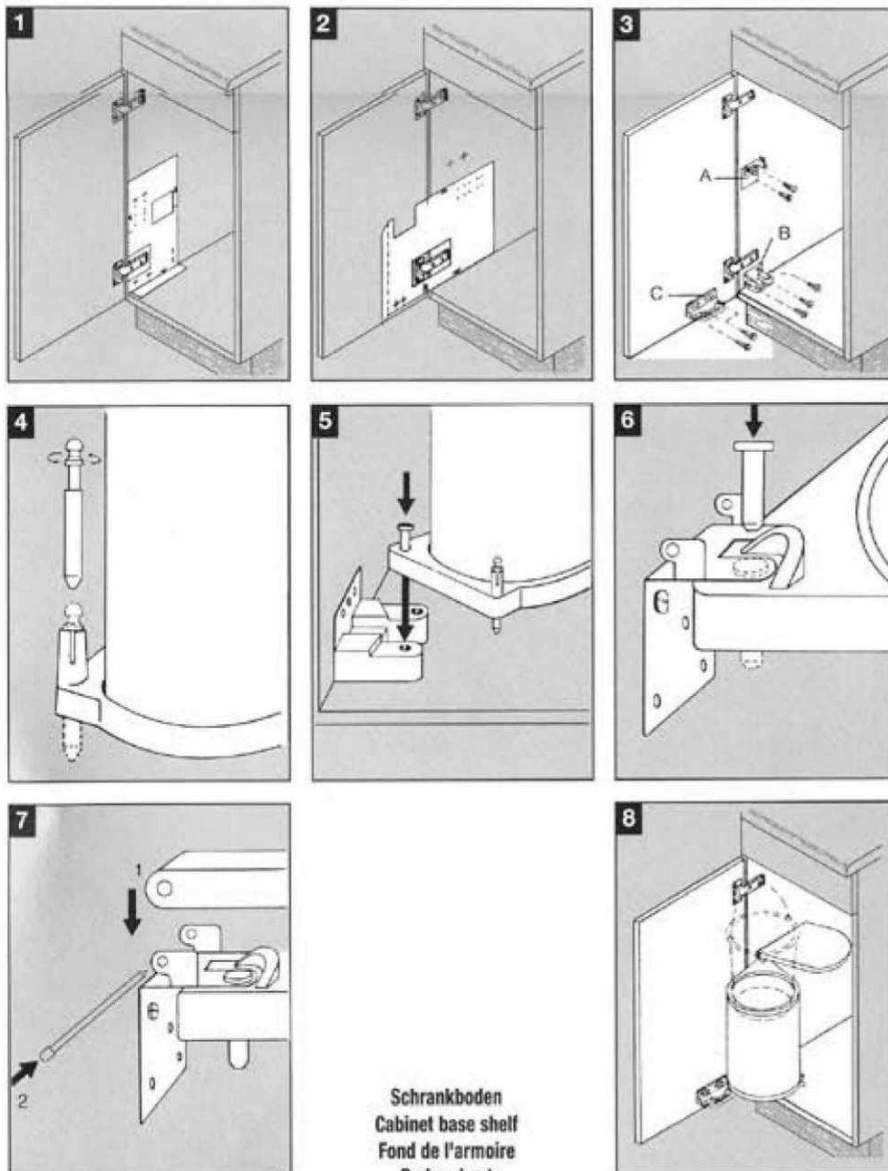
La poubelle peut être nettoyée avec produits de nettoyage usuels.

El cubo de basura se puede limpiar con limpiador domestico comercial.

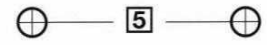
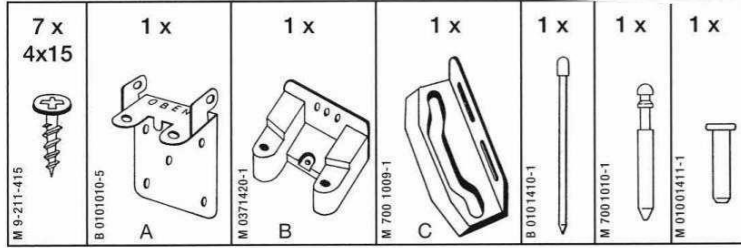
Onderhoud en reinigen met normale schoonmaakmiddelen voor huishoudelijk gebruik.

Ident-Nr.
MA 0009001

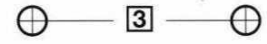
Links angeschlagene Tür
Vorderkante Seitenwand
Left handed door
front edge, side panel
Porte avec charnières à gauche
arête avant panneau de côté
Links aanslag deur



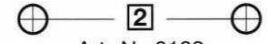
Montageanleitung für Einbau-Abfallsammler
Fitting instructions for Built-in Waste Bin
Instructions de montage pour Poubelle à encaster
Montageplan voor inbouwemmer



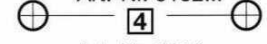
Art.-Nr. 0105...



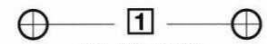
Art.-Nr. 0103...



Art.-Nr. 0102...



Art.-Nr. 0104...



Art.-Nr. 0101...

Schrankboden
 Cabinet base shelf
 Fond de l'armoire
 Bodem kast

	400 mm = ⊕ 5 Art.-Nr. 0105...
	380 mm = ⊕ 3 Art.-Nr. 0103...
	330 mm = ⊕ 2 Art.-Nr. 0102...
	320 mm = ⊕ 4 Art.-Nr. 0104...
	280 mm = ⊕ 1 Art.-Nr. 0101...

Hinterkante Tür
 Rear edge, door
 Arête arrière de la porte
 Achterkant deur

Die Pflege und Reinigung kann mit handelsüblichen Reinigungsmitteln erfolgen.

The waste bin can be cleaned with commercial household cleaner.

La poubelle peut être nettoyée avec produits de nettoyage usuels.

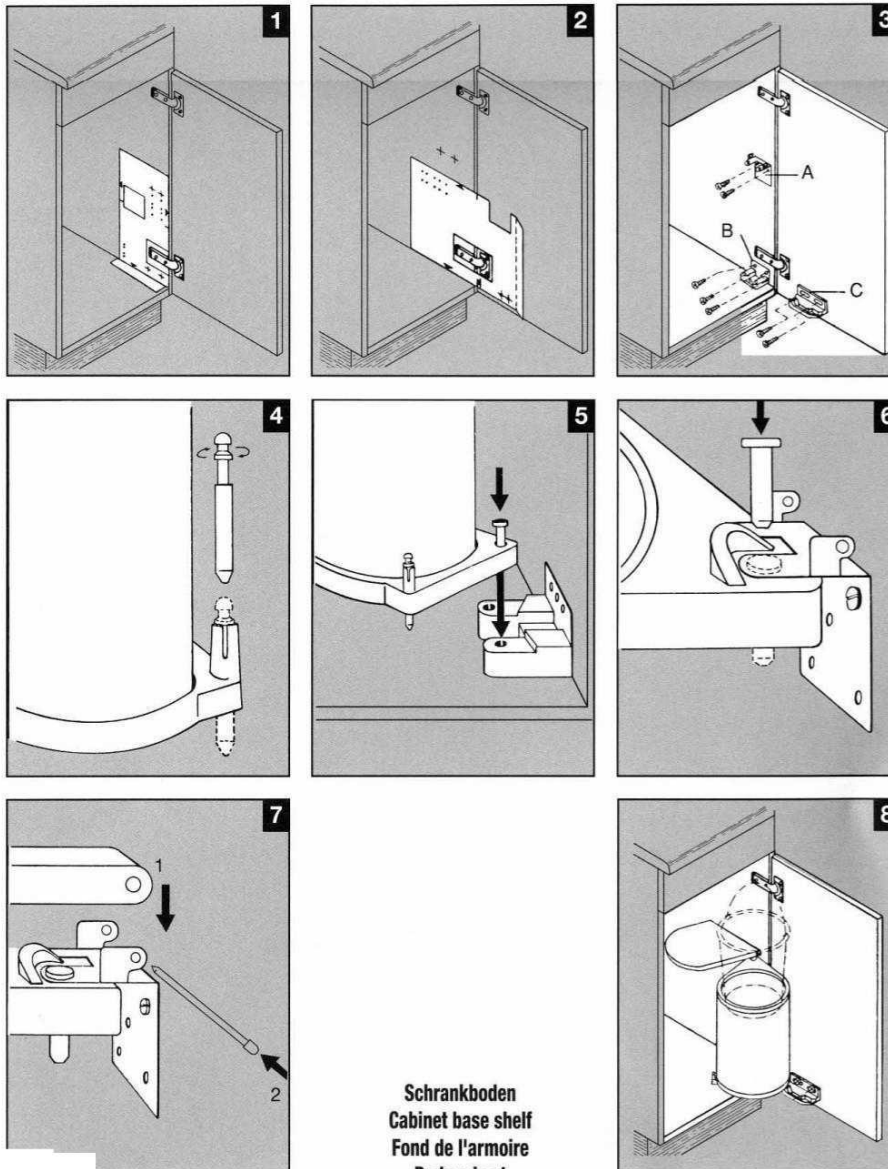
El cubo de basura se puede limpiar con limpiador domestico commercial.

Onderhoud en reinigig met normale spoelmiddelen voor huishoudelijk gebruik.

Ident-Nr.
 MA 0009001

10.00 DD

Rechts angeschlagene Tür
 Vorderkante Seitenwand
 Right handed door
 front edge, side panel
 Porte avec charnières à droite
 arête avant panneau de côté
 Rechts aanslag deur



Schrankboden
 Cabinet base shelf
 Fond de l'armoire
 Bodem kast