

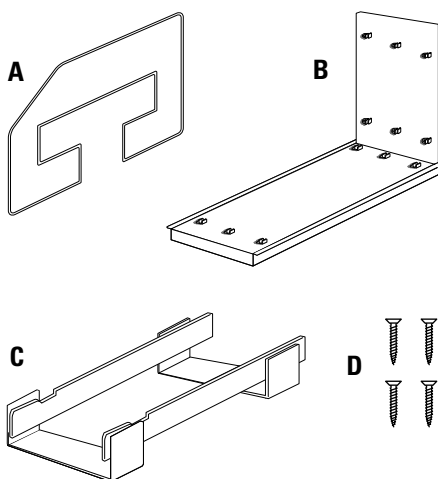
# ROLL-OUT TRAY DIVIDER

## Installation Instructions

*Inspect all parts and read all instructions prior to beginning assembly and installation.*

### Parts Included

- A. Tray Divider (not assembled to board)
- B. Pre-assembled Mounting Board
- C. Sliding Base Assembly
- D. Mounting Screw Package



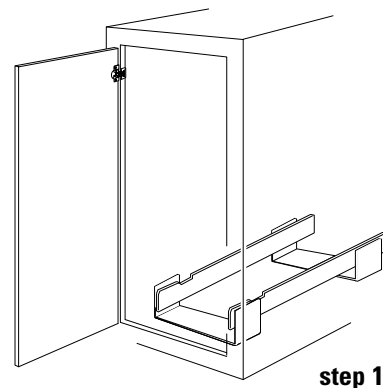
### Tools Required

- Phillips Screwdriver
- Measuring Tape
- Pencil
- Drill with 1/16" bit for pilot holes (optional)

### Product Assemblies

TDRO-6  
TDRO-9

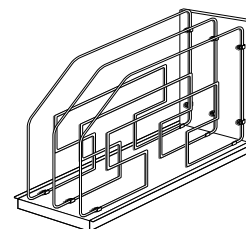
**Step 1** Place sliding base assembly on cabinet floor, right behind the back edge of the cabinet face frame. If installing in a frameless cabinet, measure 1/2" to 3/4" back from front of cabinet opening, and align sliding base assembly parallel to cabinet opening. Close door to make sure the assembly will not hold cabinet door open. Also, check to see if unit will clear the door opening when fully extended. Once position is determined, fasten in place using four mounting screws provided and the Phillips head screwdriver.



step 1

### Optional step

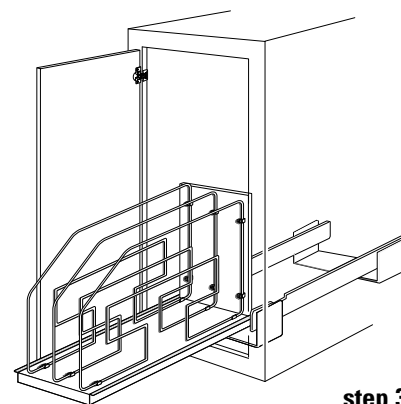
Mark placement of mounting holes with a pencil, remove sliding base assembly and drill pilot holes for fastening screws. Place sliding base assembly back into position and fasten with the provided screws.



step 2

**Step 2** Fit tray dividers onto mounting board. Product assembly TDRO-6 is supplied with 2 dividers, TDRO-9 is supplied with 3 dividers.

**Step 3** Slide mounting board with tray dividers attached into the installed sliding base assembly, by inserting the wheels on mounting board into the tracks on the sliding base assembly. The mounting board should move freely along the track. Installation is now complete.



step 3



**Real Solutions**  
For Real Life.™