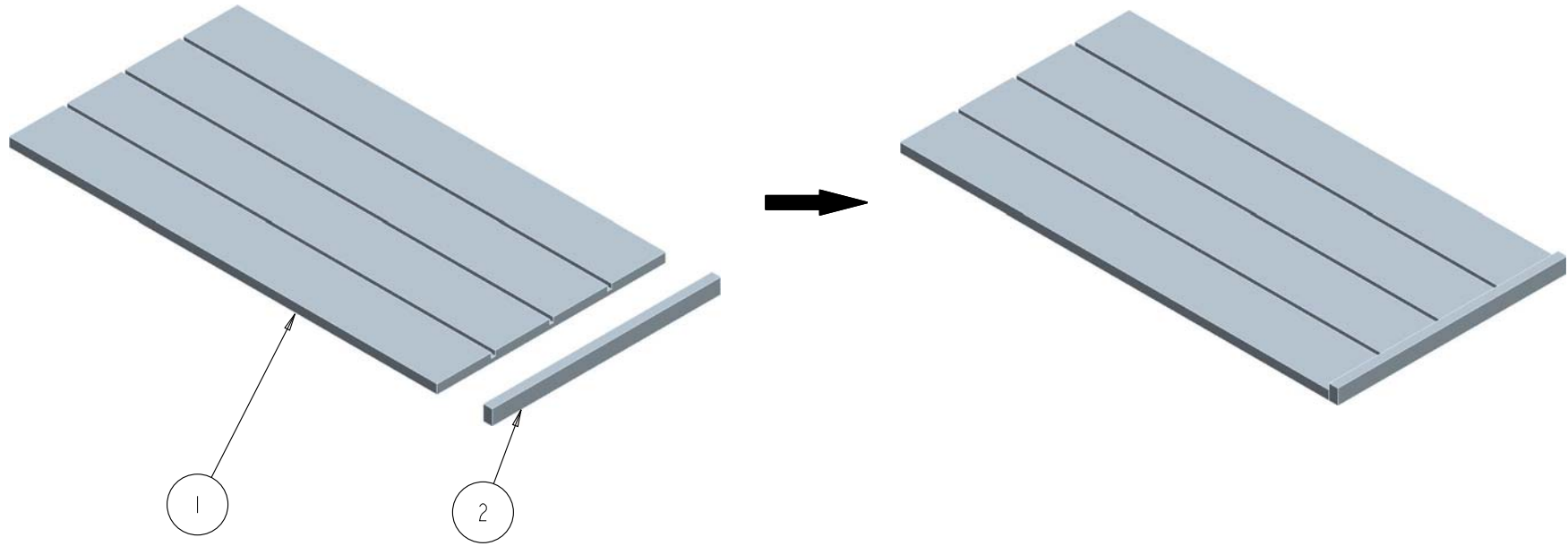
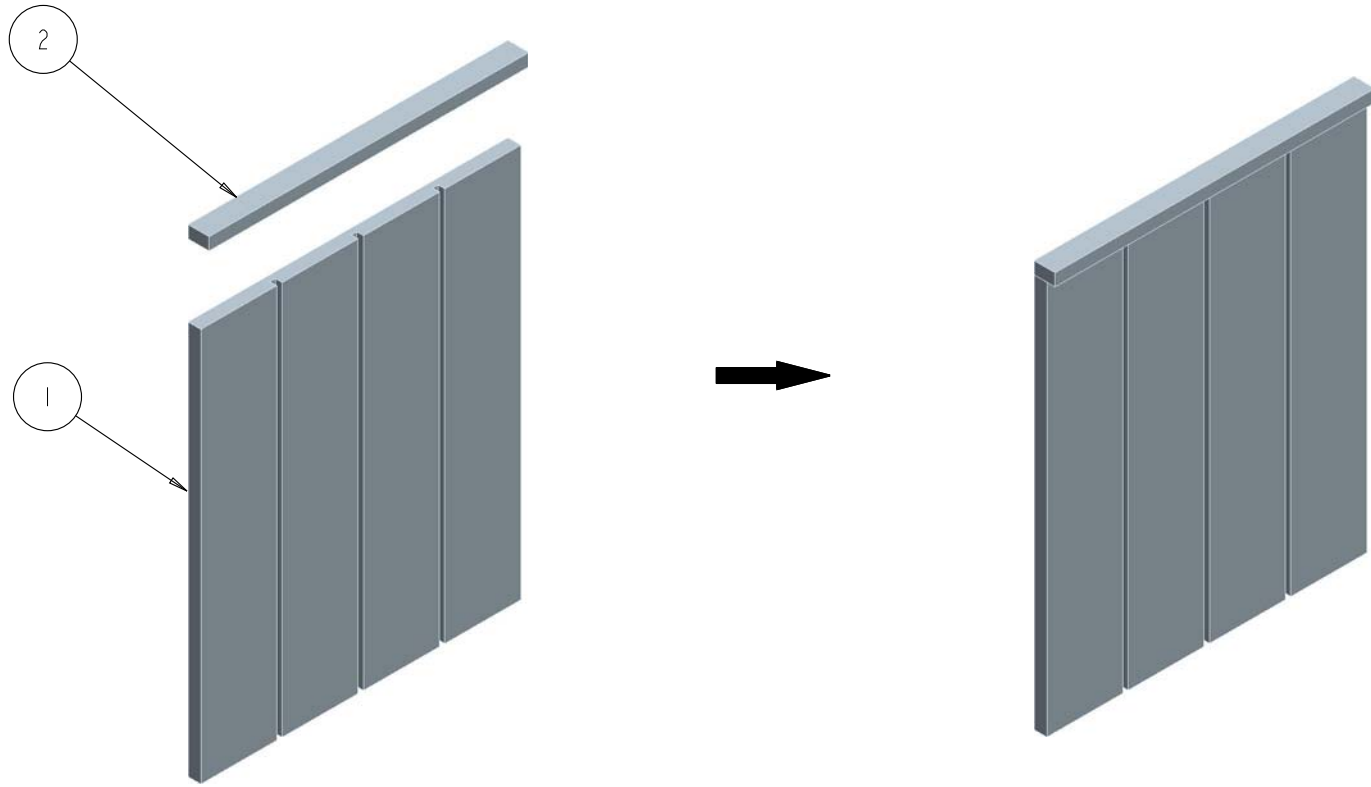


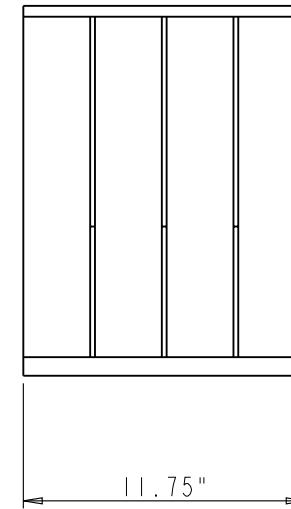
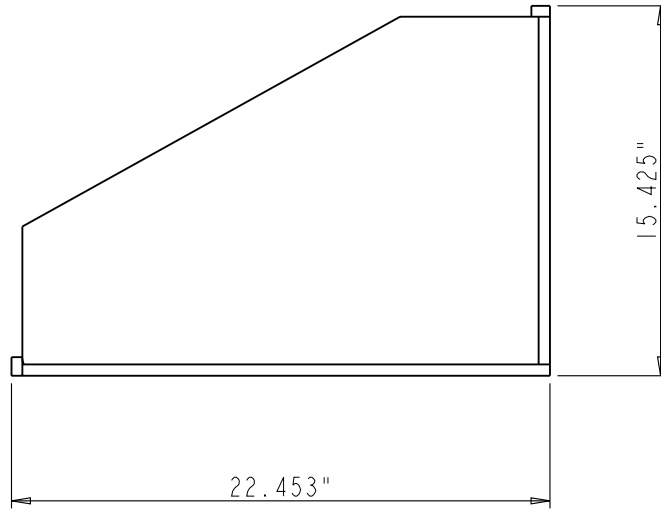
3	TD-BACK-PANEL-ASSY		1			ASSEMBLY	1
2	TD-DEVIDER		3			PART	1
1	TD-BOTTOM-PANEL-ASSY		1			ASSEMBLY	1
NO.	ITEM#	MATERIAL	QTY	UNIT	TOTLE	TYPE	ASSY LEVEL
				WEIGHT			
<b>HARDWARE</b> <b>HR</b> 4319 MARLENA ST. BOSSIER CITY, LA71111 <b>RESOURCES</b>		<b>ITEM#</b> TRAY-DEVIDER		<b>MATERIAL:</b> TRAY-DEVIDER		<b>WEIGHT:</b> 9	
<b>PROPRIETARY AND CONFIDENTIAL</b> THE INFORMATION CONTAINED IN THIS DRAWING IS THE SOLE PROPERTY OF HARDWARE RESOURCES INC. ANY REPRODUCTION IN PART OR AS A WHOLE WITHOUT THE WRITTEN PERMISSION OF HARDWARE RESOURCES INC. IS PROHIBITED.		<b>FINISH:</b>		<b>PROJECTION:</b>		<b>TOLERANCE UNLESS OTHERWISE SPECIFIED:</b> X : MM ±0.20 X.X : MM ±0.10 X.XX : MM ±0.05 ANGULAR: ±0.5° DO NOT SCALE DRAWING	
		<b>UNIT:</b>		<b>DRAWN BY:</b> <i>alan.liu</i>		<b>DATE:</b>	
		<b>SIZE:</b>		<b>CHECKED BY:</b>		<b>DATE:</b>	
		<b>APPROVED BY:</b>				<b>DATE:</b>	



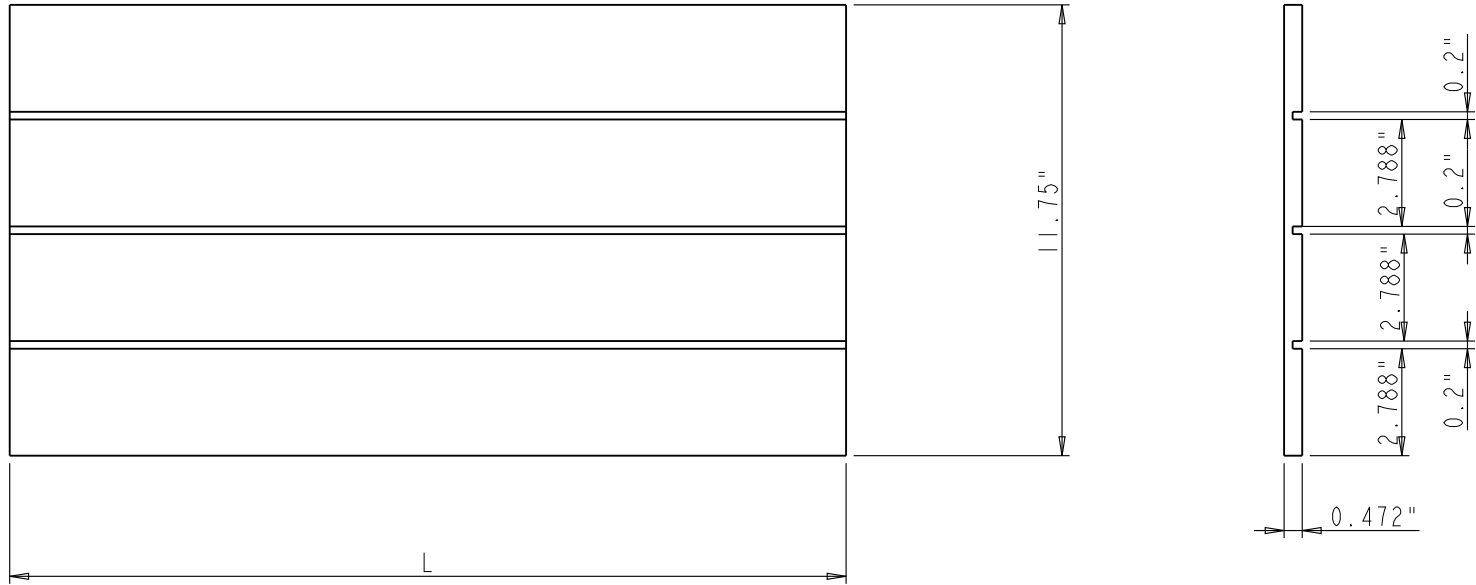
2	TD-KEEPER-MOLDING		I			PART	I
1	TD-BOTTOM-PANEL		I			PART	I
NO.	ITEM#	MATERIAL	QTY	UNIT	TOTLE	TYPE	ASSY LEVEL
				WEIGHT			
<b>HARDWARE</b> <b>HR</b> 4319 MARLENA ST. BOSSIER CITY, LA71111 <b>RESOURCES</b>		<b>ITEM#</b> TD-BOTTOM-PANEL-ASSY			<b>MATERIAL:</b> _____ <b>WEIGHT:</b> _____		
<b>PROPRIETARY AND CONFIDENTIAL</b> THE INFORMATION CONTAINED IN THIS DRAWING IS THE SOLE PROPERTY OF HARDWARE RESOURCES INC. ANY REPRODUCTION IN PART OR AS A WHOLE WITHOUT THE WRITTEN PERMISSION OF HARDWARE RESOURCES INC. IS PROHIBITED.		<b>FINISH:</b> _____			<b>PROJECTION:</b> 		
<b>TOLERANCE UNLESS OTHERWISE SPECIFIED:</b> X : MM ±0.20 X.X : MM ±0.10 X.XX : MM ±0.05 ANGULAR: ±0.5° DO NOT SCALE DRAWING		<b>UNIT:</b> _____	<b>DRAWN BY:</b> <i>alan.liu</i>		<b>DATE:</b> _____		
		<b>SIZE:</b> _____	<b>CHECKED BY:</b> _____		<b>DATE:</b> _____		
		<b>APPROVED BY:</b> _____		<b>DATE:</b> _____			



2	TD-KEEPER-MOLDING		I			PART	I
1	TD-BACK-PANEL		I			PART	I
NO.	ITEM#	MATERIAL	QTY	UNIT	TOTLE	TYPE	ASSY LEVEL
				WEIGHT			
<b>HARDWARE</b> <b>HR</b> 4319 MARLENA ST. BOSSIER CITY, LA71111 <b>RESOURCES</b>		<b>ITEM#</b> TD-BACK-PANEL-ASSY		<b>MATERIAL:</b> _____ <b>WEIGHT:</b> _____		<b>PROJECTION:</b> 	
<b>PROPRIETARY AND CONFIDENTIAL</b> THE INFORMATION CONTAINED IN THIS DRAWING IS THE SOLE PROPERTY OF HARDWARE RESOURCES INC. ANY REPRODUCTION IN PART OR AS A WHOLE WITHOUT THE WRITTEN PERMISSION OF HARDWARE RESOURCES INC. IS PROHIBITED.		<b>TOLERANCE UNLESS OTHERWISE SPECIFIED:</b> X : MM ±0.20 X.X : MM ±0.10 X.XX : MM ±0.05 ANGULAR: ±0.5° DO NOT SCALE DRAWING		<b>UNIT:</b> _____ <b>SIZE:</b> _____	<b>DRAWN BY:</b> <i>alan.liu</i> <b>CHECKED BY:</b> _____	<b>DATE:</b> _____ <b>DATE:</b> _____	<b>DATE:</b> _____
				PAGE 00		<b>APPROVED BY:</b> _____ <b>DATE:</b> _____	



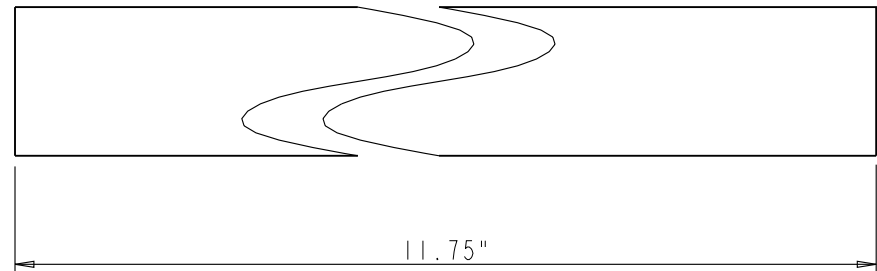
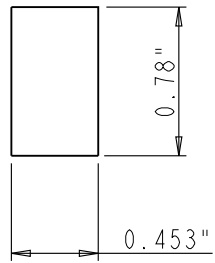
HARDWARE <b>HR</b> 4319 MARLENA ST. BOSSIER CITY, LA71111 RESOURCES <b>PROPRIETARY AND CONFIDENTIAL</b> THE INFORMATION CONTAINED IN THIS DRAWING IS THE SOLE PROPERTY OF HARDWARE RESOURCES INC. ANY REPRODUCTION IN PART OR AS A WHOLE WITHOUT THE WRITTEN PERMISSION OF HARDWARE RESOURCES INC. IS PROHIBITED	ITEM: TRAY-DEVIDER	MATERIAL:
	FINISH:	WEIGHT: 9
TOLERANCE UNLESS OTHERWISE SPECIFIED: X : MM ±0.20 X.X : MM ±0.10 X.XX : MM ±0.05 ANGULAR: ±0.5° DO NOT SCALE DRAWING	UNIT: SIZE:	PROJECTION:
DRAWN BY: <i>alan.liu</i>	CHECKED BY:	DATE:
APPROVED BY:	DATE:	DATE:



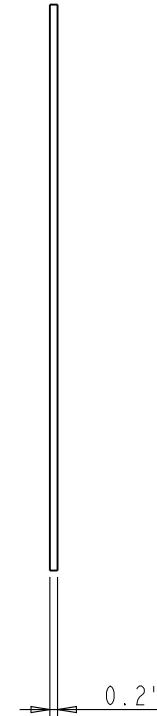
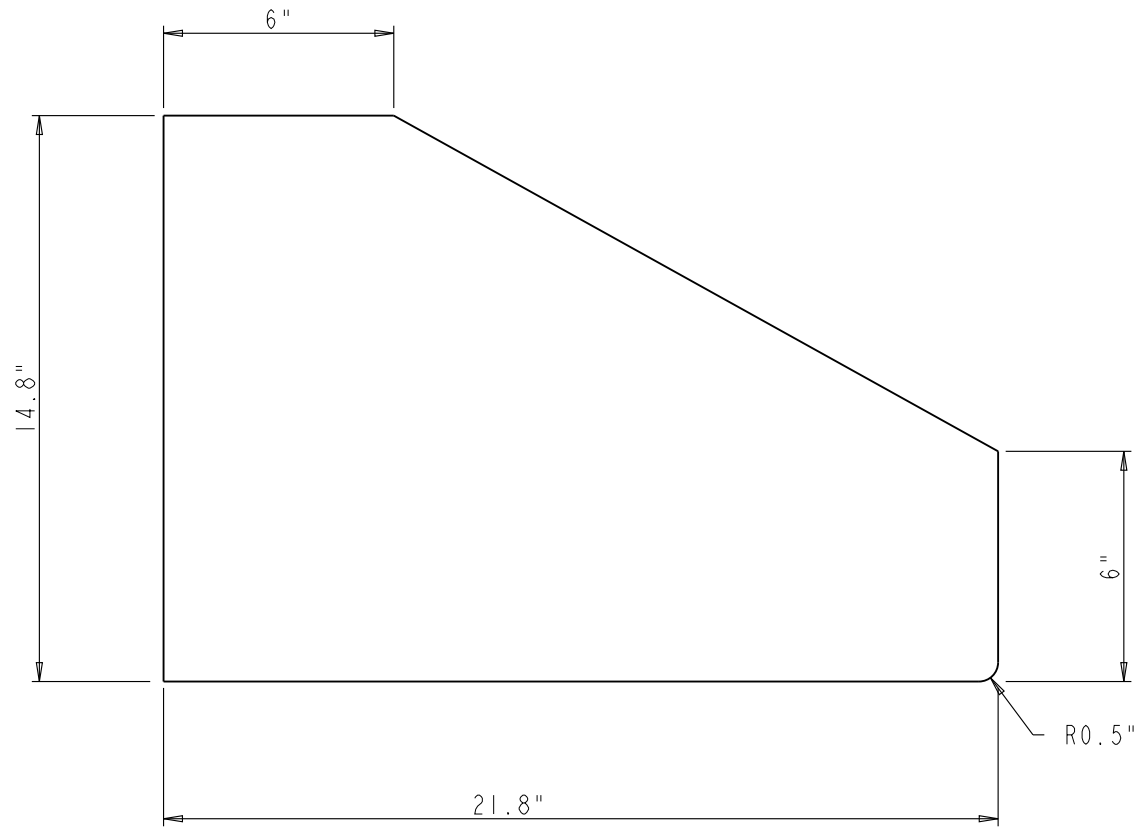
Note:

1. Material: Ply wood with C/D Birth veneer  
Two side UV coating;
2. The dimension " L " of bottom panel is 22";
3. The dimension " L " of back panel is 14.5";

<b>HARDWARE</b> <b>HR</b> 4319 MARLENA ST. BOSSIER CITY, LA71111 <b>RESOURCES</b>	<b>ITEM#:</b> TD-PANEL	<b>MATERIAL:</b>
	<b>FINISH:</b>	<b>WEIGHT:</b> g
<b>PROPRIETARY AND CONFIDENTIAL</b> THE INFORMATION CONTAINED IN THIS DRAWING IS THE SOLE PROPERTY OF HARDWARE RESOURCES INC. ANY REPRODUCTION IN PART OR AS A WHOLE WITHOUT THE WRITTEN PERMISSION OF HARDWARE RESOURCES INC. IS PROHIBITED	<b>TOLERANCE UNLESS          OTHERWISE SPECIFIED:</b> X : MM ±0.20 X.X : MM ±0.10 X.XX : MM ±0.05 ANGULAR: ±0.5° DO NOT SCALE DRAWING	<b>PROJECTION:</b> 
<b>UNIT:</b>	<b>DRAWN BY:</b> <i>alan.liu</i>	<b>DATE:</b>
<b>SIZE:</b>	<b>CHECKED BY:</b>	<b>DATE:</b>
	<b>APPROVED BY:</b>	<b>DATE:</b>



<b>HARDWARE</b> <b>HR</b> 4319 MARLENA ST. BOSSIER CITY, LA71111 <b>RESOURCES</b>	<b>ITEM#:</b> TD-KEEPER-MOLDING		<b>MATERIAL:</b> Hard Maple			
	<b>FINISH:</b>		<b>WEIGHT:</b> 9			
<b>PROPRIETARY AND CONFIDENTIAL</b> THE INFORMATION CONTAINED IN THIS DRAWING IS THE SOLE PROPERTY OF HARDWARE RESOURCES INC. ANY REPRODUCTION IN PART OR AS A WHOLE WITHOUT THE WRITTEN PERMISSION OF HARDWARE RESOURCES INC. IS PROHIBITED	<b>TOLERANCE UNLESS          OTHERWISE SPECIFIED:</b> X : MM ±0.20 X X : MM ±0.10 X X X : MM ±0.05 ANGULAR : ±0.5° DO NOT SCALE DRAWING		<b>UNIT:</b>	<b>DRAWN BY:</b> <i>alan.liu</i>	<b>DATE:</b>	
	<b>SIZE:</b>	<b>CHECKED BY:</b>	<b>DATE:</b>	<b>PROJECTION:</b>		
		<b>APPROVED BY:</b>	<b>DATE:</b>			



Note:

1. Material: MDF with Maple veneer, two side UV coating;

<b>HARDWARE</b> <b>HR</b> 4319 MARLENA ST. BOSSIER CITY, LA71111 RESOURCES <u>PROPRIETARY AND CONFIDENTIAL</u> THE INFORMATION CONTAINED IN THIS DRAWING IS THE SOLE PROPERTY OF HARDWARE RESOURCES INC. ANY REPRODUCTION IN PART OR AS A WHOLE WITHOUT THE WRITTEN PERMISSION OF HARDWARE RESOURCES INC. IS PROHIBITED	ITEM: TD-DEVIDER	MATERIAL: WEIGHT:
	FINISH:	PROJECTION:
TOLERANCE UNLESS OTHERWISE SPECIFIED: X : MM ±0.20 X.X : MM ±0.10 X.XX : MM ±0.05 ANGULAR: ±0.5° DO NOT SCALE DRAWING	UNIT: SIZE:	DRAWN BY: <i>alan.liu</i> CHECKED BY: APPROVED BY:
		DATE: DATE: DATE: