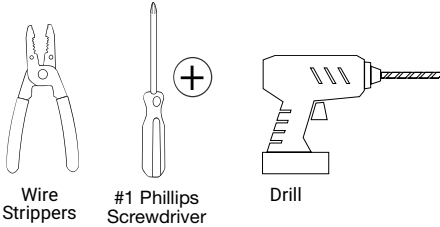


NOTE

- **DO NOT** connect low-voltage LED tape light to high-voltage power.
- Do not over tighten any screws.
- Maintain polarity on all connections, Red wire to (+ or DC12V or DC24V) and Black wire to (- or GND).

Tools Needed

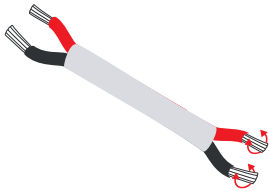


Product Legend

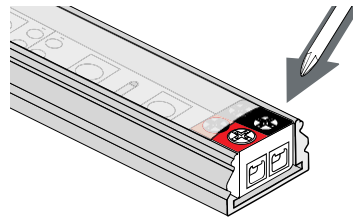


EZ Connector
L-8MM-EZ

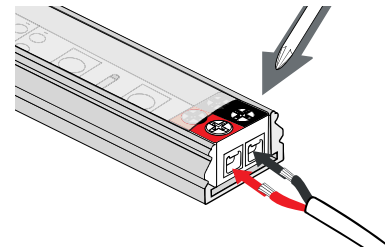
Step 1. Connecting Single Color Flat Linear Fixture to the 8MM EZ Connector on the Fixture



1. Use wire strippers to strip wire 1/4", then twist ends. **NOTE: wires may be folded over after being twisted, but it is not required.**

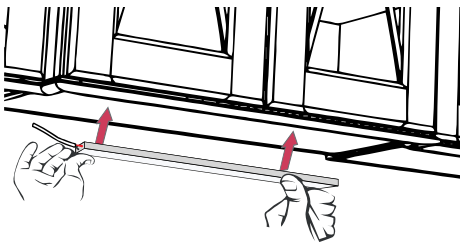


2. Leave frosted lens on the fixture. Use #1 Phillips to loosen the 2 outer terminal screws on the 8MM-EZ Connector. **NOTE: DO NOT loosen the two inner terminal screws.**



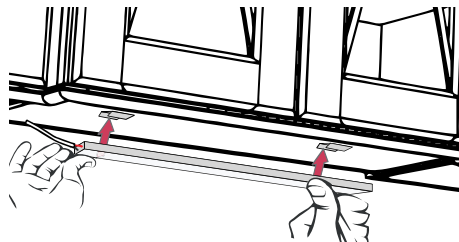
2. Insert stripped wires from power supply or receiver into outer terminals, Red wire to (+ or DC12V) side marked in red, Black wire to (- or GND) side of tape marked in black; tighten screws.

Step 2. Secure housing to mounting surface



1. Center the fixture in the mounting space. Measure 1/2" from each end of fixture for mounting clip placement. Use screws to secure clip to mounting surface.

NOTE: When installing a fixture 30" and longer, center the third mounting clip between these.



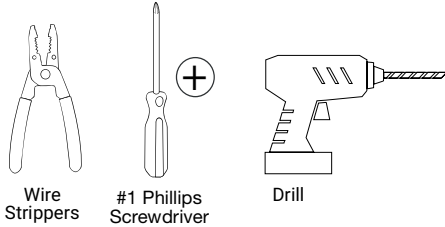
2. Snap fixture into mounting clips.

Follow instructions included in receiver or controller to properly hook up single color 8MM tape light system.

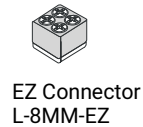
NOTE

- **DO NOT** connect low-voltage LED tape light to high-voltage power.
- Do not over tighten any screws.
- Maintain polarity on all connections, Red wire to (WW+) and Black wire to (CW-).

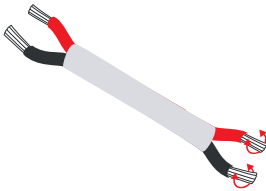
Tools Needed



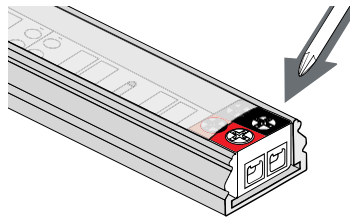
Product Legend



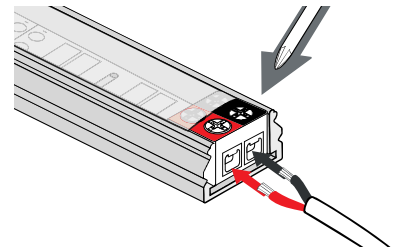
Step 1. Connecting TandemLED Flat Linear Fixture to the 8MM EZ Connector on the Fixture



1. Use wire strippers to strip wire 1/4", then twist ends. **NOTE: wires may be folded over after being twisted, but it is not required.**

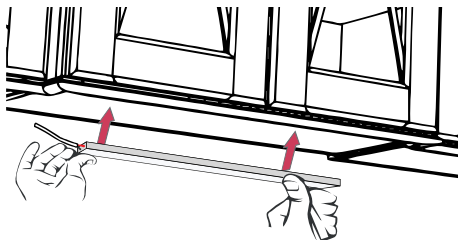


2. Leave frosted lens on the fixture. Use #1 Phillips to loosen the 2 outer terminal screws on the 8MM-EZ Connector. **NOTE: DO NOT loosen the two inner terminal screws.**



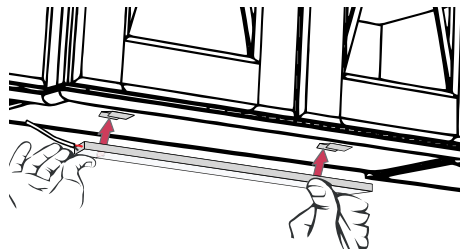
2. Insert stripped wires from power supply or receiver into outer terminals, Red wire to (WW+) side marked in red, Black wire to (CW-) side of tape marked in black; tighten screws.

Step 2. Secure housing to mounting surface



1. Center the fixture in the mounting space. Measure 1/2" from each end of fixture for mounting clip placement. Use screws to secure clip to mounting surface.

NOTE: When installing a fixture 30" and longer, center the third mounting clip between these.



2. Snap fixture into mounting clips.

Follow instructions included in receiver or controller to properly hook up TandemLED tape light system.