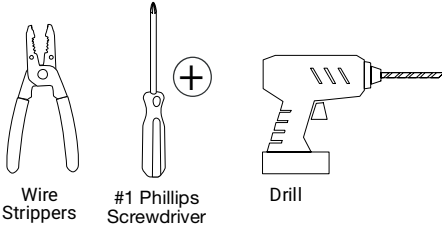


### NOTE

- **DO NOT** connect low-voltage LED tape light to high-voltage power.
- Do not over tighten any screws.
- Maintain polarity on all connections, Red wire to (+ or DC12V or DC24V) and Black wire to (- or GND).

### Tools Needed

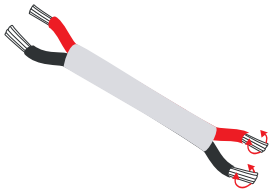


### Product Legend

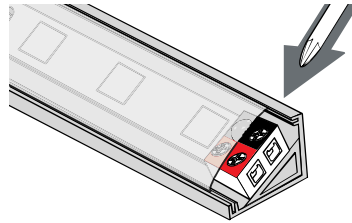


EZ Connector  
L-8MM-EZ

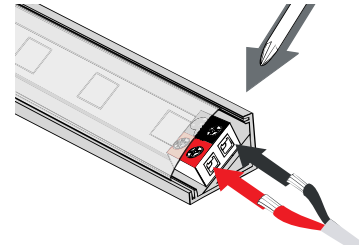
## Step 1. Connecting Single Color Flat Linear Fixture to the 8MM EZ Connector on the Fixture



1. Use wire strippers to strip wire 1/4", then twist ends. **NOTE: wires may be folded over after being twisted, but it is not required.**

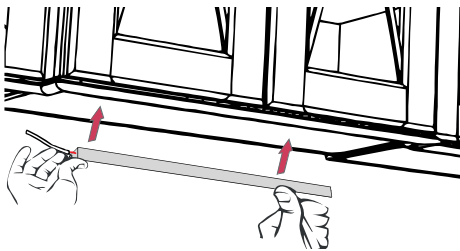


2. Leave frosted lens on the fixture. Use #1 Phillips to loosen the 2 outer terminal screws on the 8MM-EZ Connector. **NOTE: DO NOT loosen the two inner terminal screws.**



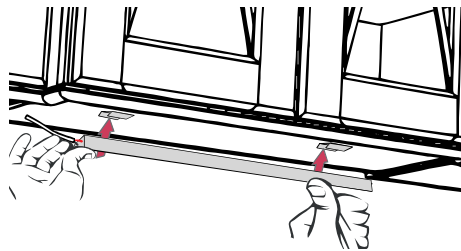
2. Insert stripped wires from power supply or receiver into outer terminals, Red wire to (+ or DC12V) side marked in red, Black wire to (- or GND) side of tape marked in black; tighten screws.

## Step 2. Secure housing to mounting surface



1. Center the fixture in the mounting space. Measure 1/2" from each end of fixture for mounting clip placement. Use screws to secure clip to mounting surface.

**NOTE: When installing a fixture 30" and longer, center the third mounting clip between these.**



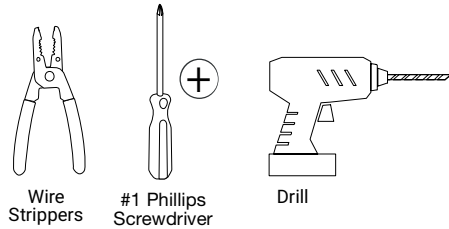
2. Snap fixture into mounting clips.

**Follow instructions included in receiver or controller to properly hook up single color 8MM tape light system.**

### NOTE

- **DO NOT** connect low-voltage LED tape light to high-voltage power.
- Do not over tighten any screws.
- Maintain polarity on all connections, Red wire to (WW+) and Black wire to (CW-).

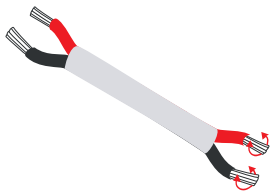
### Tools Needed



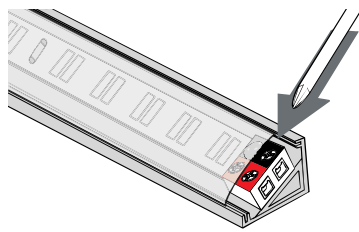
### Product Legend



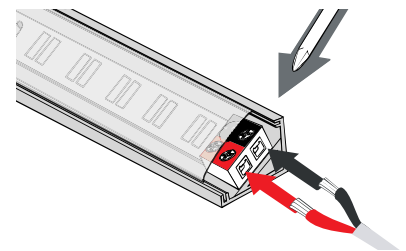
## Step 1. Connecting TandemLED Flat Linear Fixture to the 8MM EZ Connector on the Fixture



1. Use wire strippers to strip wire 1/4", then twist ends. **NOTE: wires may be folded over after being twisted, but it is not required.**

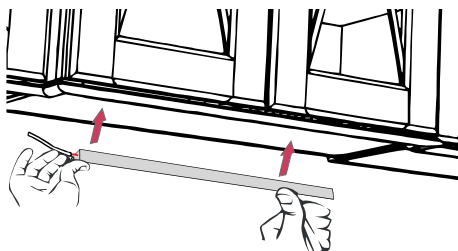


2. Leave frosted lens on the fixture. Use #1 Philips to loosen the 2 outer terminal screws on the 8MM-EZ Connector. **NOTE: DO NOT loosen the two inner terminal screws.**

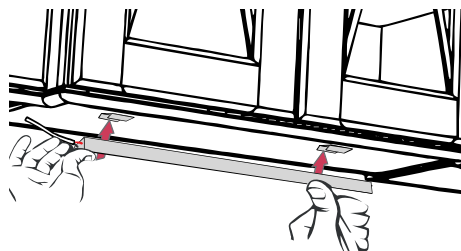


2. Insert stripped wires from power supply or receiver into outer terminals, Red wire to (WW+) side marked in red, Black wire to (CW-) side of tape marked in black; tighten screws.

## Step 2. Secure housing to mounting surface



1. Center the fixture in the mounting space. Measure 1/2" from each end of fixture for mounting clip placement. Use screws to secure clip to mounting surface.  
**NOTE: When installing a fixture 30" and longer, center the third mounting clip between these.**



2. Snap fixture into mounting clips.

**Follow instructions included in receiver or controller to properly hook up TandemLED tape light system.**