

# English

## Magnetic Low-Voltage Dimmer

Rated at 120 V~ 60 Hz; 600 VA (450 W) or 1000 VA (800 W) depending on model  
 Models: Ariadni®, Diva®, Glyder®, Luméa2®, Rotary™, Skylark®

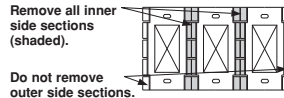
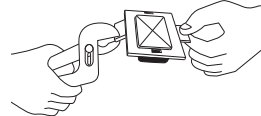
### Important Notes

Please read before installing

- CAUTION:** Use dimmer with core and coil (magnetic) low-voltage transformers. Contact Lutron to control solid-state (electronic) low-voltage transformers. To avoid overheating and possible damage to other equipment, do not use to control receptacles, fluorescent lighting fixtures, or motor-driven appliances.
- CAUTION:** Operating a dimmed low-voltage circuit with all lamps inoperative or removed may result in current flow in excess of normal levels. To avoid possible transformer overheating or failure, Lutron strongly recommends the following:
  - Do not operate without operative lamps in place.
  - Replace burned out lamps as soon as possible.
  - To prevent premature failure due to overcurrent, use transformers with thermal protection or fused primary transformer windings.
- Dimmer may feel warm to the touch during normal operation.
- Only one dimmer can be used in a 3-way circuit.
- When no "grounding means" exist within the wallbox then the NEC® 2002, Article 404.9 allows a dimmer without a grounding connection to be installed as a replacement, as long as a plastic, noncombustible wallplate is used. For this type of installation, cap or remove the green ground wire on the dimmer and use an appropriate wallplate such as Lutron's Claro® or Fassada™ series wallplates.
- Protect dimmer from dust and dirt when painting or spackling.
- For new installations, install a test switch before installing the dimmer.
- Install in accordance with all national and local electrical codes.
- Clean dimmer with a **soft damp cloth only**. Do not use any chemical cleaners.

### Multi-Unit Installations

When combining controls in a wallbox, remove all inner side sections prior to wiring (see below). Use pliers to bend side section up and down until it breaks off. Repeat for each side section to be removed. Reduction of dimmer capacity is also required. Refer to chart below for maximum dimmer capacity.



Dimmer Rating	No sides removed	1 side removed	2 sides removed
600 VA	600 VA (450 W) max.	500 VA (375 W) max.	400 VA (300 W) max.
1000 VA	1000 VA (800 W) max.	800 VA (650 W) max.	650 VA (500 W) max.

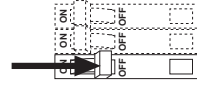
### Limited Warranty

Lutron will, at its option, repair or replace any unit that is defective in materials or manufacture within one year after purchase. For warranty service, return unit to place of purchase or mail to Lutron at 7200 Suter Rd., Coopersburg, PA 18036-1299, postage pre-paid.  
**THIS WARRANTY IS IN LIEU OF ALL OTHER EXPRESS WARRANTIES, AND THE IMPLIED WARRANTY OF MERCHANTABILITY IS LIMITED TO ONE YEAR FROM PURCHASE. THIS WARRANTY DOES NOT COVER THE COST OF INSTALLATION, REMOVAL OR REINSTALLATION, OR DAMAGE RESULTING FROM MISUSE, ABUSE, OR DAMAGE FROM IMPROPER WIRING OR INSTALLATION. THIS WARRANTY DOES NOT COVER INCIDENTAL OR CONSEQUENTIAL DAMAGES.**  
 This warranty gives you specific legal rights, and you may have other rights which vary from state to state. Some states do not allow the exclusion or limitation of incidental or consequential damages, or limitation on how long an implied warranty may last, so the above limitations may not apply to you.  
 This product may be covered by Mexican patent 168,884 and one or more of the following U.S. patents: 4,816,628; 4,835,343; 4,835,816; 4,876,498; 4,939,383; 4,954,768; 5,207,317; 5,262,678; 5,359,231; 5,637,930; 6,005,308; D335,282; D342,234; D364,141 and corresponding foreign patents. Lutron, Ariadni, Claro, Diva, Glyder, Luméa, Luméa2, and Skylark are registered trademarks, and Fassada and Rotary are trademarks of Lutron Electronics Co., Inc. NEC is a registered trademark of the National Fire Protection Association, Quincy, Massachusetts. © 2005 Lutron Electronics Co., Inc.

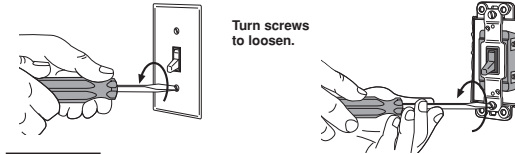
### Installation

For installations involving more than one control in a wallbox, refer to Multi-Unit Installations before beginning.

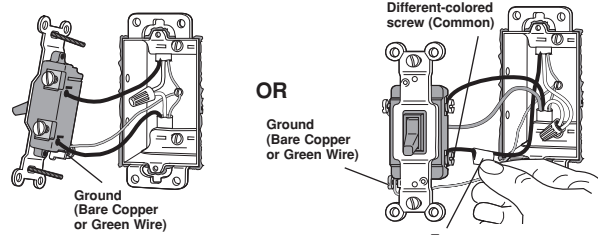
**Step 1** **WARNING:** Turn power OFF at circuit breaker or remove fuse.



**Step 2** Remove switch mounting screws. Pull switch from wall.



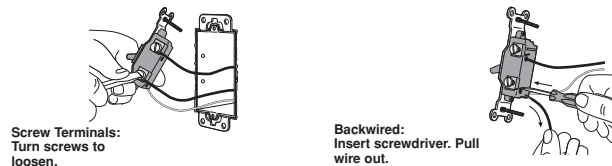
**Step 3** Verify type of switch.



**SINGLE-POLE:** Insulated wires connected to two screws of the same color. Replace with a SINGLE-POLE dimmer.

**3-WAY:** Insulated wires connected to three screws. One of these wires is connected to a screw of a different-color or labeled COMMON, MARK or TAG wire to identify when wiring. Replace with a 3-WAY dimmer.

**Step 4** Disconnect switch wires.



### Important Wiring Information

When making wire connections, follow the recommended strip lengths and combinations for the supplied wire connectors. **Note:** Wire connectors provided are suitable for **copper wire only**. For aluminum wire, consult an electrician.

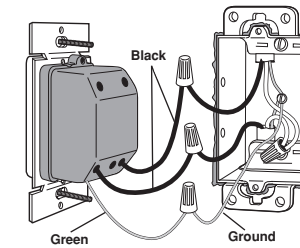
**Small:**  
 Strip insulation 3/8" (10 mm) for 14 AWG wire  
 Strip insulation 1/2" (13 mm) for 16 or 18 AWG wire  
 Use to join one 14 AWG supply wire with one 16 or 18 AWG control wire.

**Large:**  
 Strip insulation 1/2" (13 mm) for 10, 12 or 14 AWG wire  
 Strip insulation 5/8" (16 mm) for 16 or 18 AWG wire  
 Use to join one or two 12 or 14 AWG supply wires with one 10, 12, 14, 16, or 18 AWG control wire.

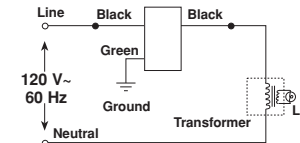


Twist wire connector tight. Be sure no bare wire is exposed.

**Step 5** Wiring a dimmer:



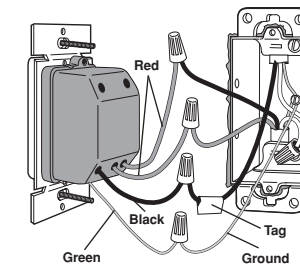
Note: Wire location on dimmer may vary depending on model.



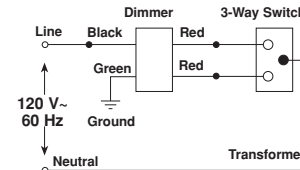
in a **SINGLE-POLE** circuit

- Connect the **green** dimmer ground wire to the **green** or **bare** copper ground wire in the wallbox (see Important Note 5).

- Connect one of the **black** dimmer wires to either of the wires removed from the switch.
- Connect the remaining **black** dimmer wire to the other wire removed from the switch.



Note: Wire location on dimmer may vary depending on model.



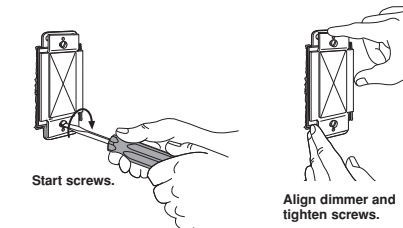
in a **3-WAY** circuit.

- Connect the **green** dimmer ground wire to the **green** or **bare** copper ground wire in the wallbox (see Important Note 5).

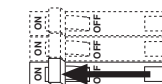
- Connect the **black** dimmer wire to the wire removed from the different-colored screw (marked or tagged wire). Remove tag from wire.
- Connect one of the **red** dimmer wires to either of the remaining wires removed from the switch.

- Connect the remaining **red** dimmer wire to the remaining wire removed from the switch.
- NOTE:** Only one dimmer may be used in a 3-WAY circuit.

**Step 6** Mount and align dimmer. Install wallplate.



**Step 7** Turn power ON.



Note: To install a traditional style wallplate, firmly pull the Glyder or Rotary knob to remove it. Install the wallplate and re-attach the knob.

