

**INSTALLATION INSTRUCTIONS**

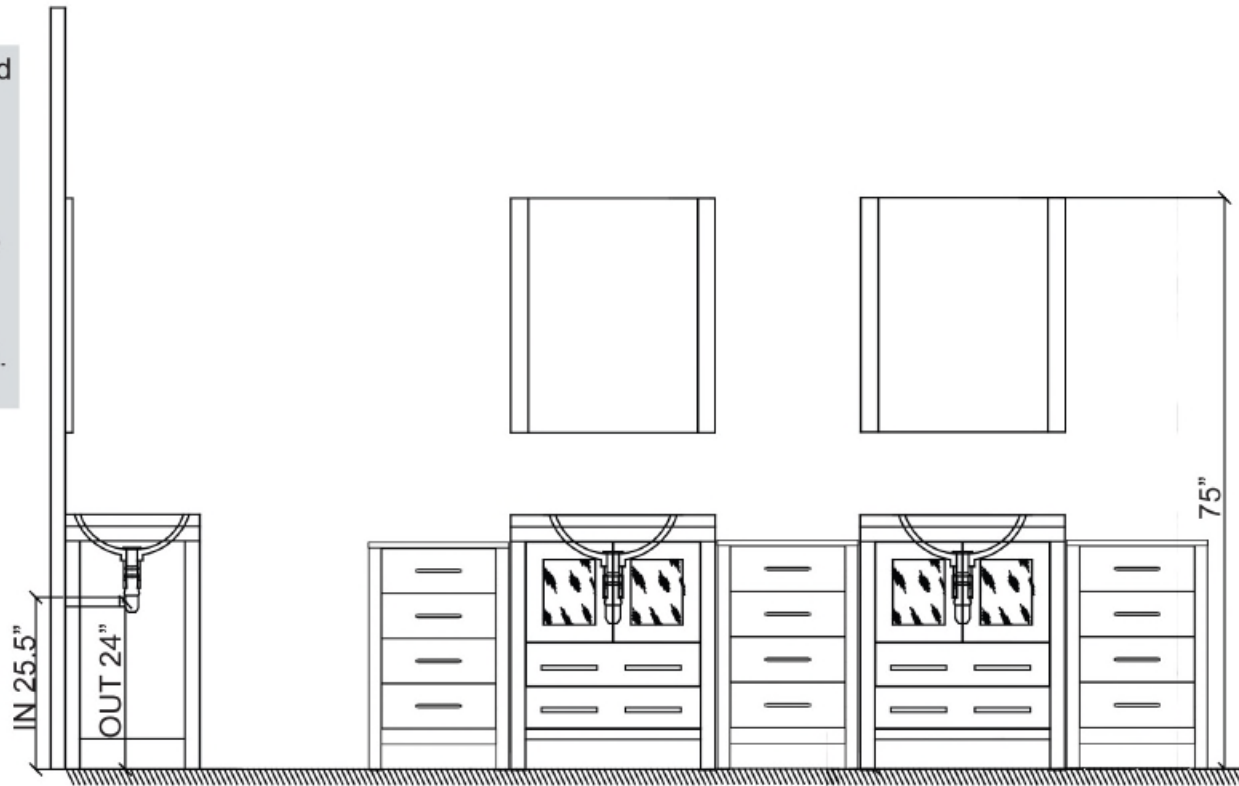
Confidential : A

SKU:KD-700118

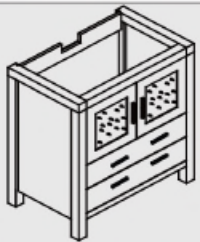
SIZE: 900x460x880mm

**kitchensource.com**  
1.800.667.8721

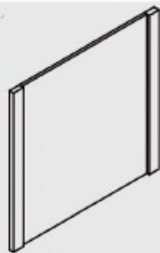
- Prior to installation please check received items against the Packing List . please report any missing items to your local dealer immediately.
- Protect all surfaces from sharp objects, high hert sources,direct prolonged sunlight and chemical hazards.
- Professional installation recommended.



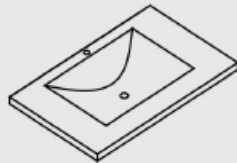
**PACKING LIST**



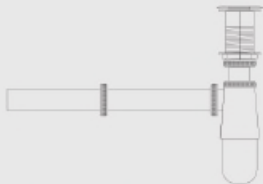
**Main cabinet/1**



**Mirror/2**



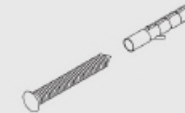
**top/3**



**POP UP+Drain pipe/4**



**FAUCET/5**



**Install screw/6**

**INSTALLATION INSTRUCTIONS**

Confidential : A

SKU:KD-700110

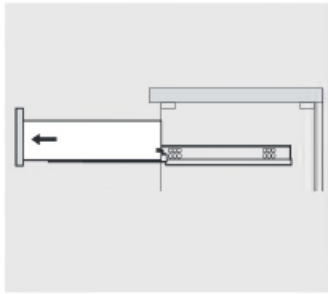
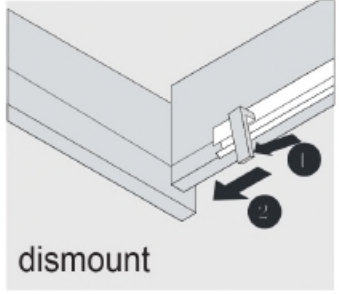
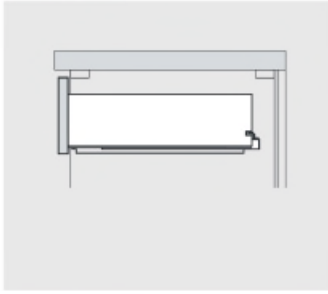
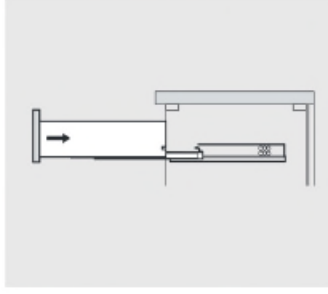
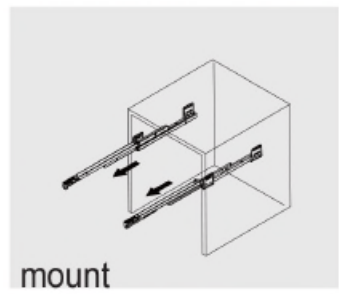
SIZE:900x460x880mm

**PROHIBIT COPY**

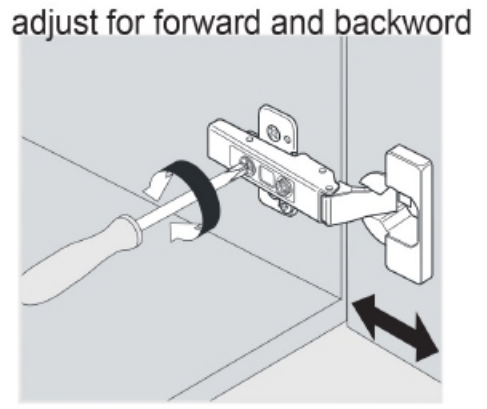
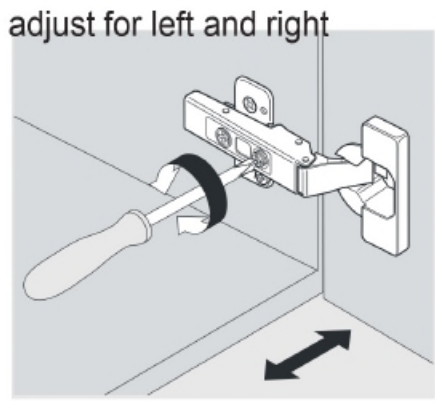
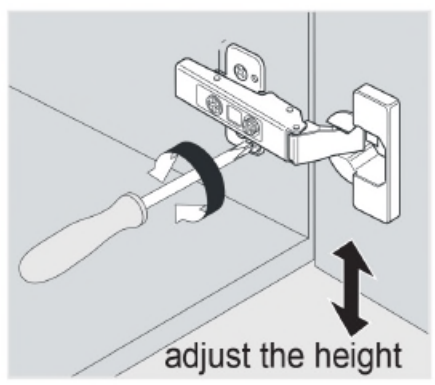
**REQUIRED TOOLS**



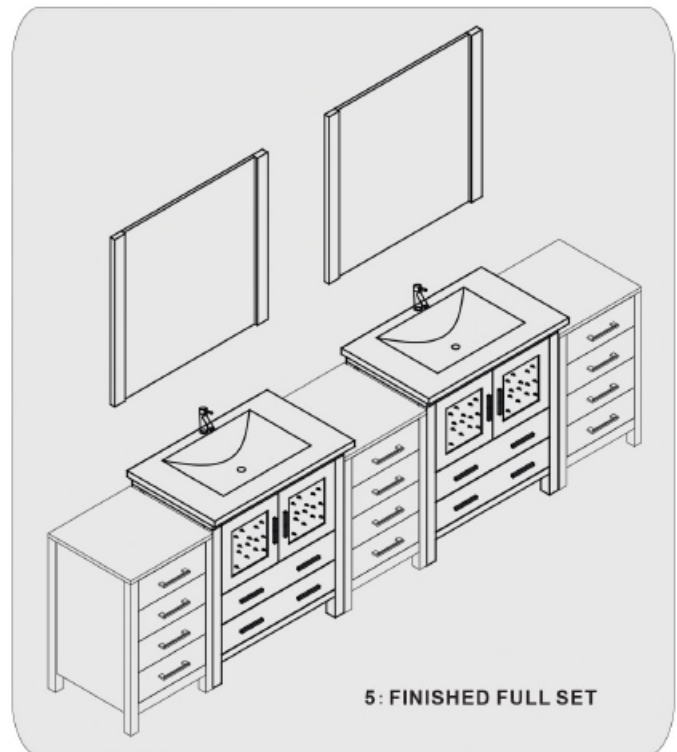
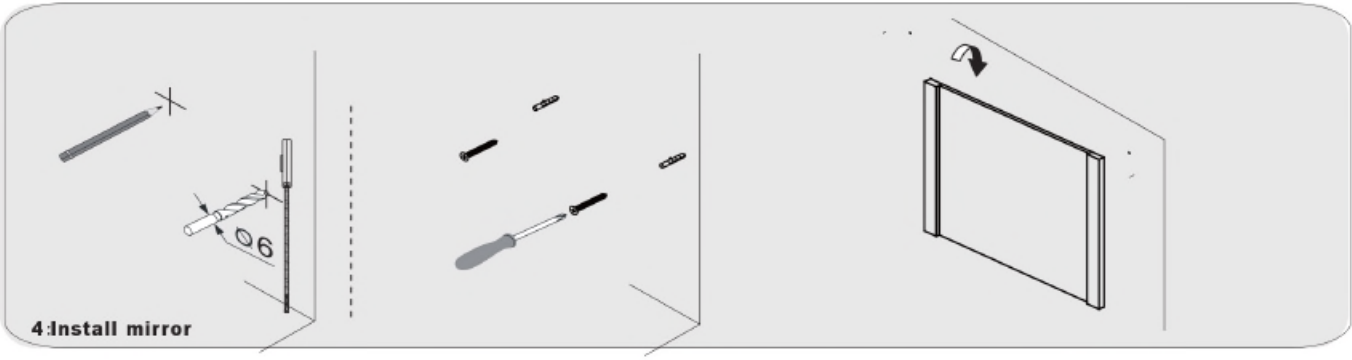
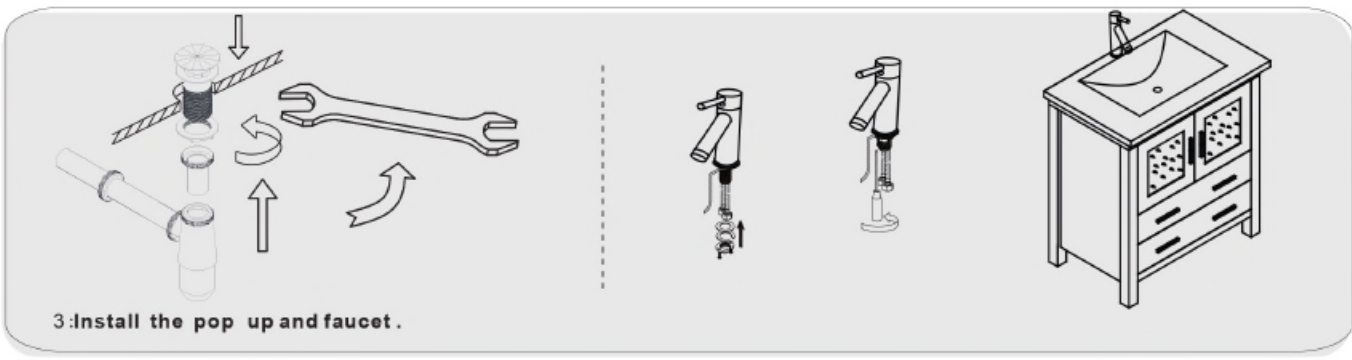
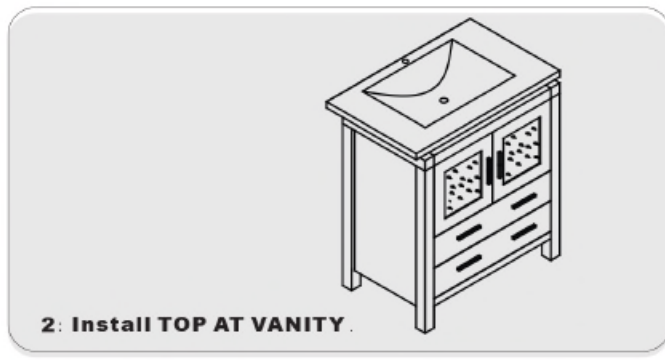
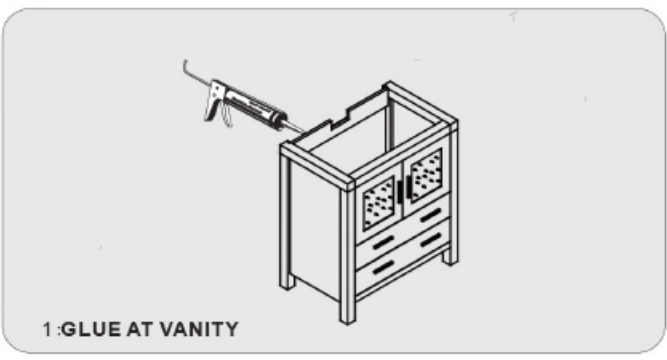
**DRAWER SLIDER ATTACHMENT AND DETACHMENT**



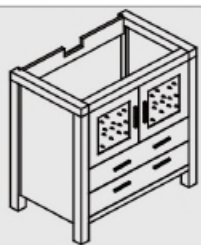
**INSTALLATION AND ADJUSTMENT OF HINGES**



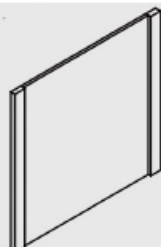
**INSTALLATION PROCESS**



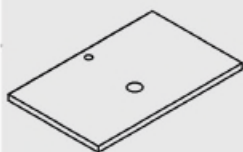
**PACKING LIST**



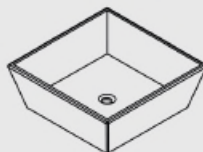
**Main cabinet/1**



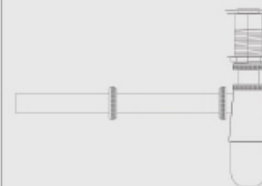
**Mirror/2**



**top/3**



**basin/4**



**POP UP+Drain pipe/5**

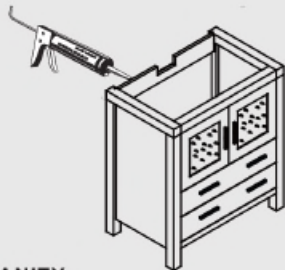


**FAUCET/6**

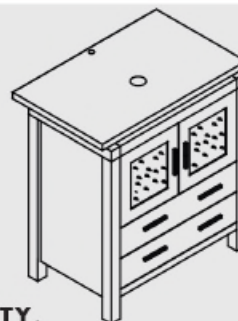


**Install screw/7**

**INSTALLATION PROCESS**



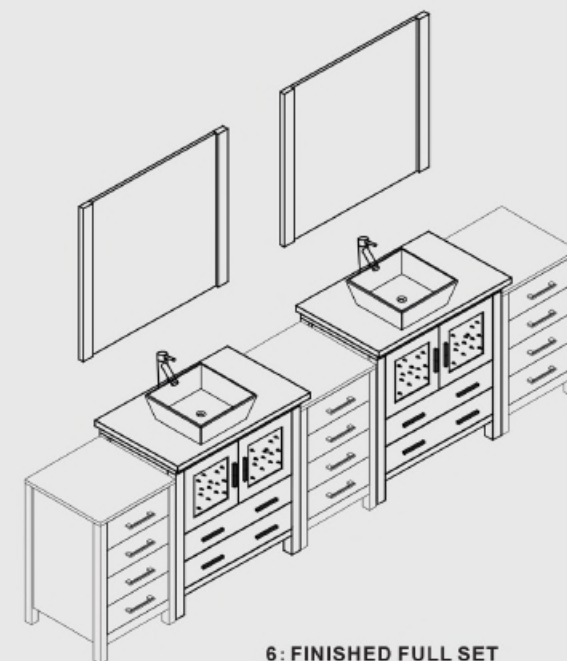
**1: GLUE AT VANITY**



**2: Install TOP AT VANITY**



**3: install Basin**



**6: FINISHED FULL SET**