

INSTALLATION INSTRUCTIONS

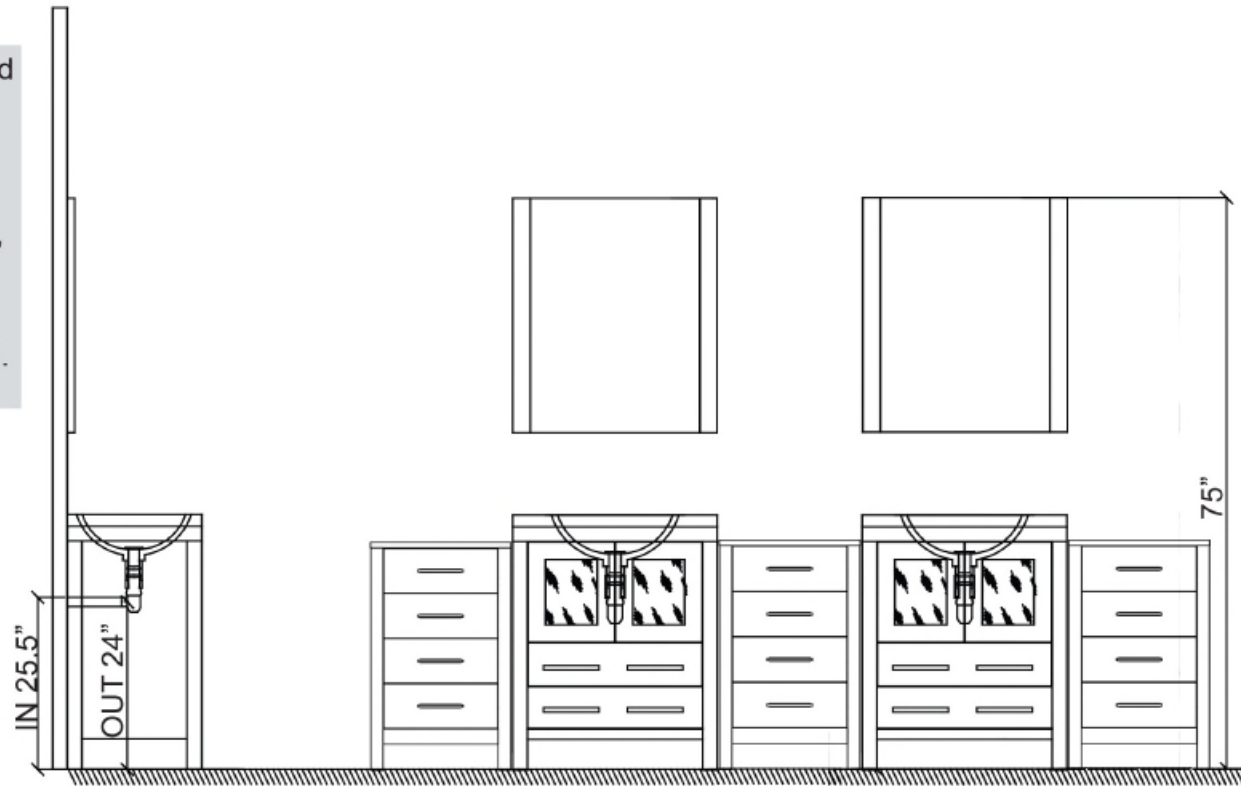
Confidential : A

SKU:KD-700110

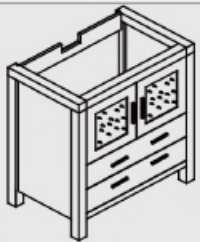
SIZE: 900x460x880mm

kitchensource.com
1.800.667.8721

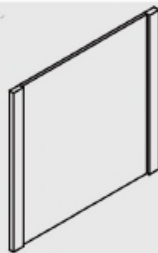
- Prior to installation please check received items against the Packing List . please report any missing items to your local dealer immediately.
- Protect all surfaces from sharp objects, high hert sources,direct prolonged sunlight and chemical hazards.
- Professional installation recommended.



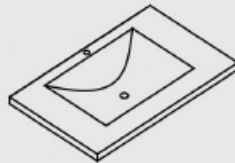
PACKING LIST



Main cabinet/1



Mirror/2



top/3



POP UP+Drain pipe/4



FAUCET/5



Install screw/6

SKU:KD-700110

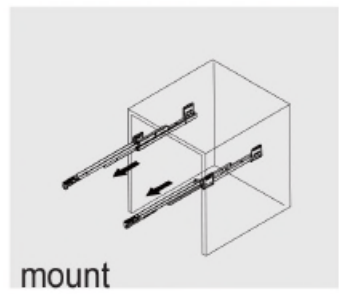
SIZE:900x460x880mm

PROHIBIT COPY

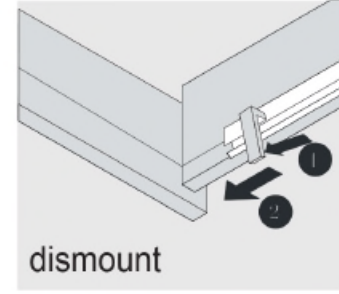
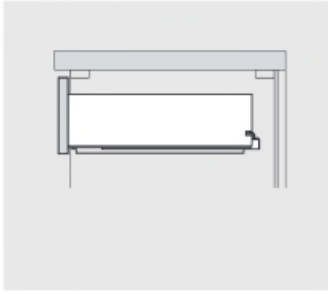
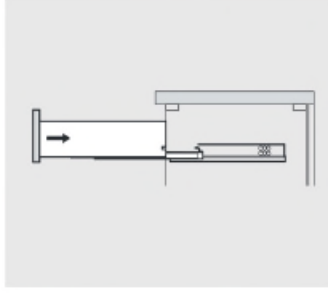
REQUIRED TOOLS



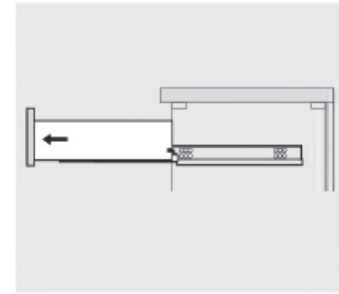
DRAWER SLIDER ATTACHMENT AND DETACHMENT



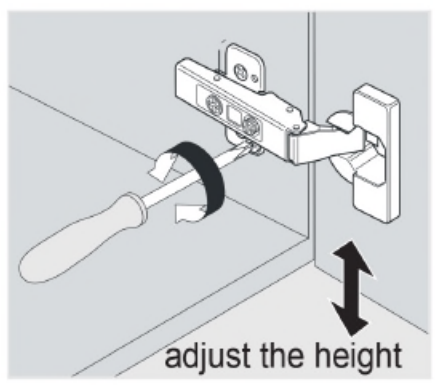
mount



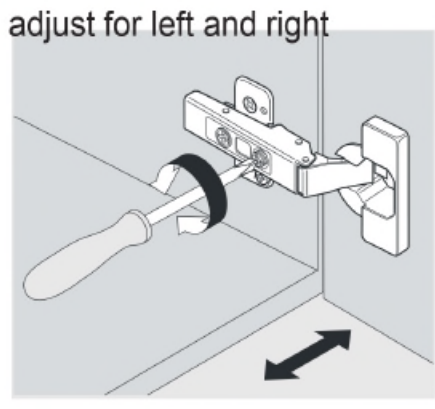
dismount



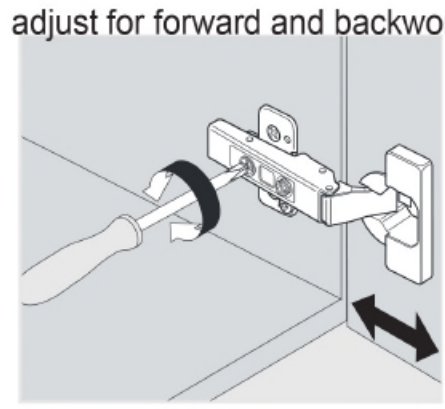
INSTALLATION AND ADJUSTMENT OF HINGES



adjust the height

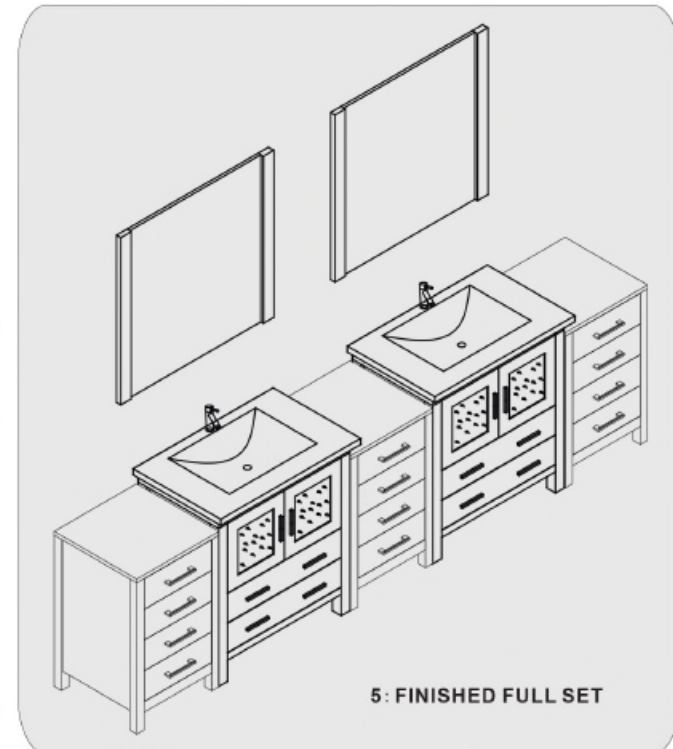
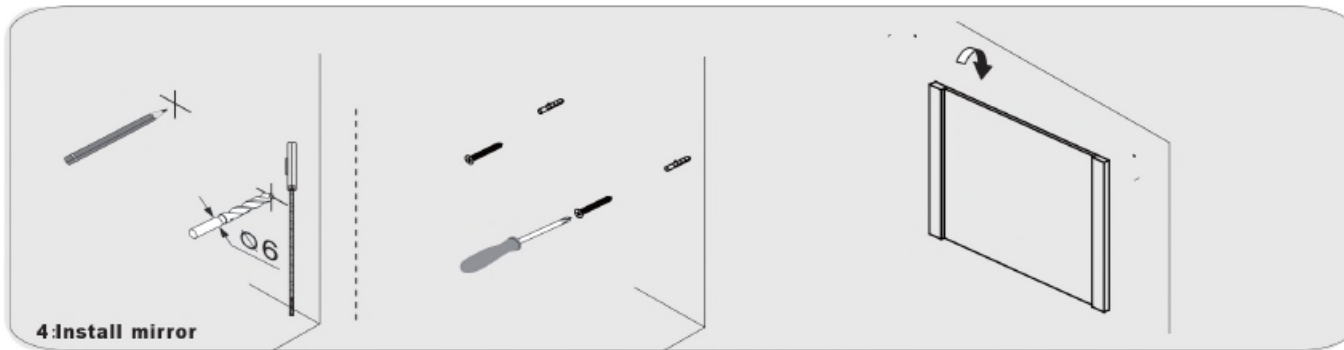
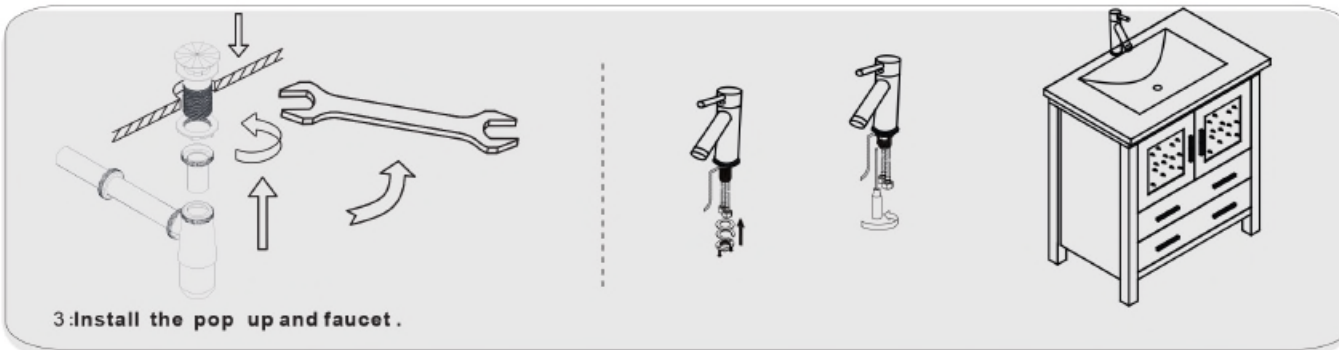
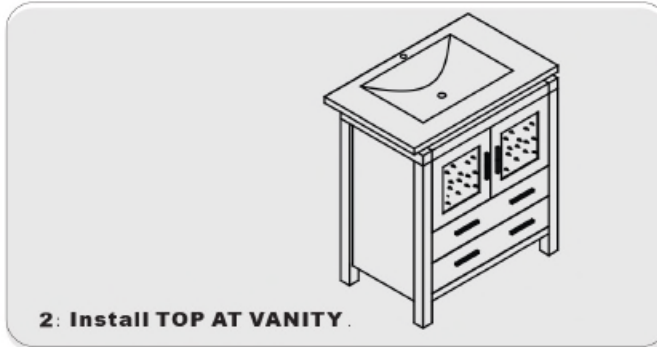


adjust for left and right

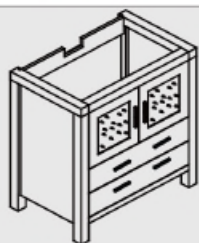


adjust for forward and backward

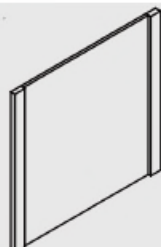
INSTALLATION PROCESS



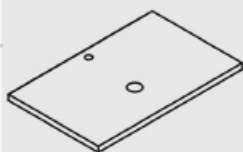
PACKING LIST



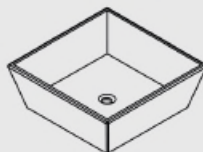
Main cabinet/1



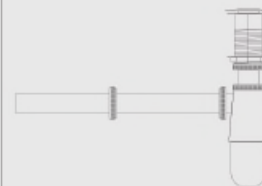
Mirror/2



top/3



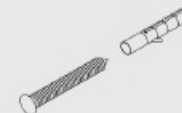
basin/4



POP UP+Drain pipe/5

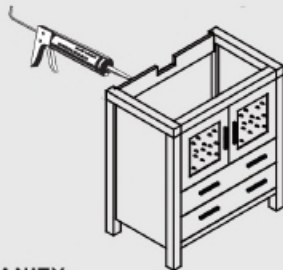


FAUCET/6

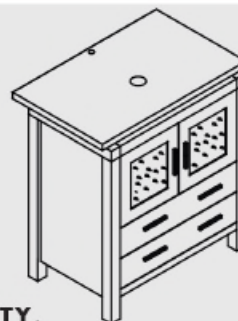


Install screw/7

INSTALLATION PROCESS



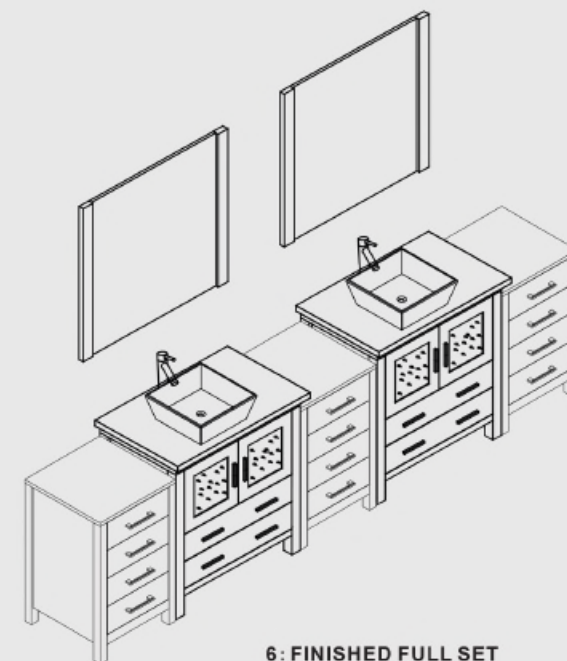
1:GLUE AT VANITY



2: Install TOP AT VANITY



3:install Basin



6: FINISHED FULL SET