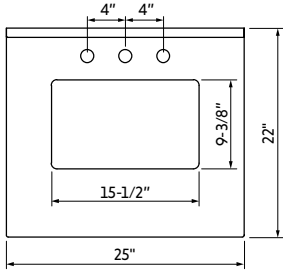
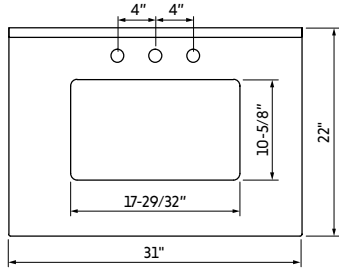


TOP SPECIFICATIONS - RECTANGLE BOWL

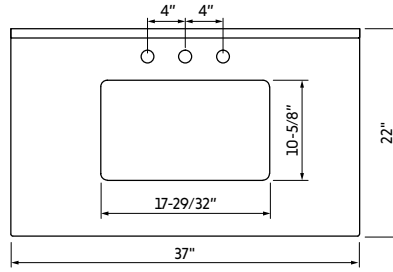
The below vanity tops with rectangle cutouts fit all of the vanity collections (except Clairemont & Compton). Special top configurations are marked with asterisks. xx = top material placeholder



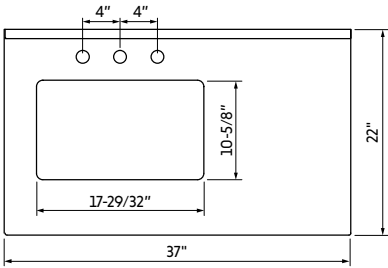
TOPR25xx



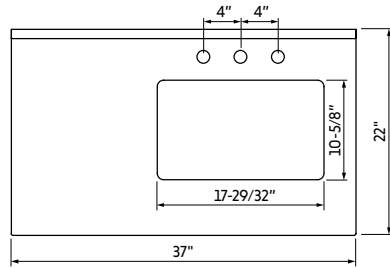
TOPR31xx



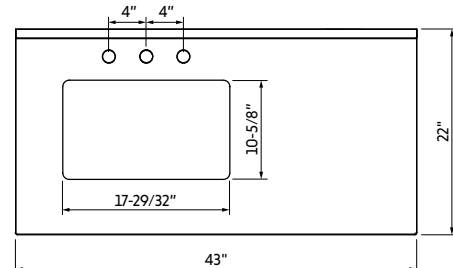
TOPR37xx



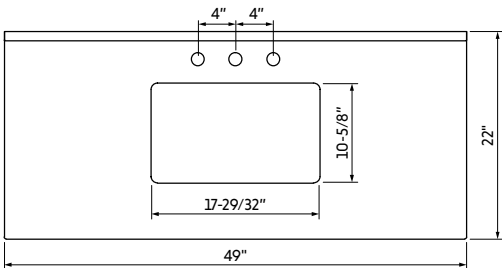
TOPR37xxCAD-ADD*



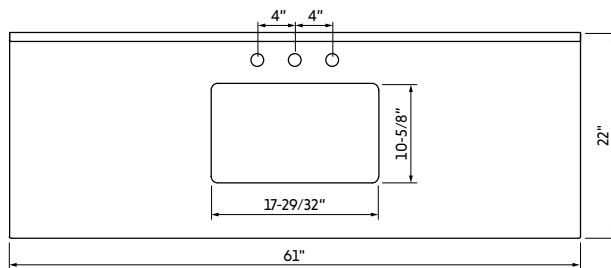
TOPR37xxAST**



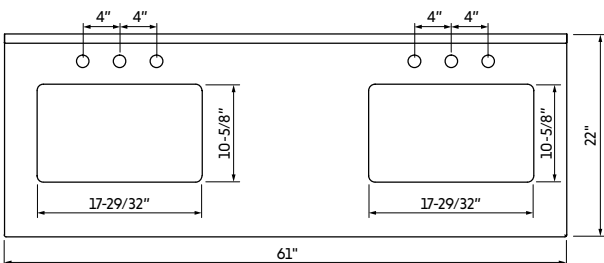
TOPR43xx-LFT****



TOPR49xx



TOPR61Sxx***



TOPR61xx

*Fits the 36" Cade and Addington vanities only. **Fits the 36" Astoria vanity only. ***Fits the 60" single bowl vanity only. ****Fits the 42" Katara vanity only.