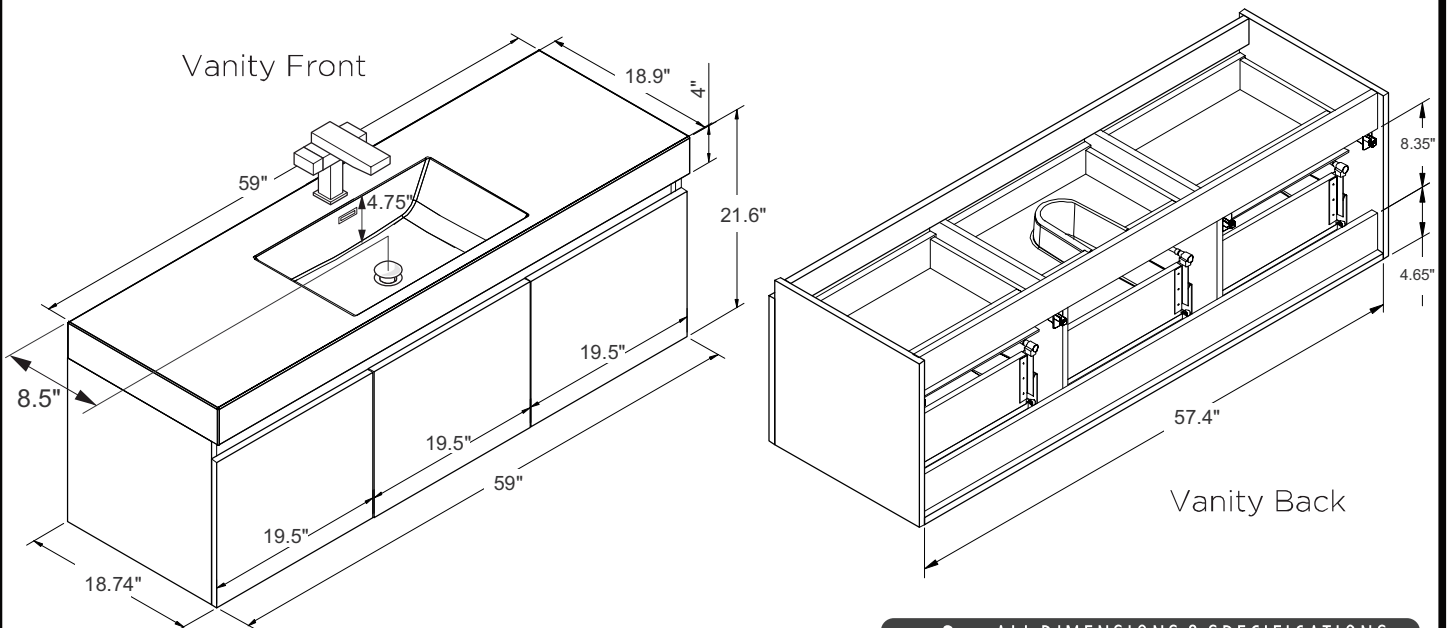
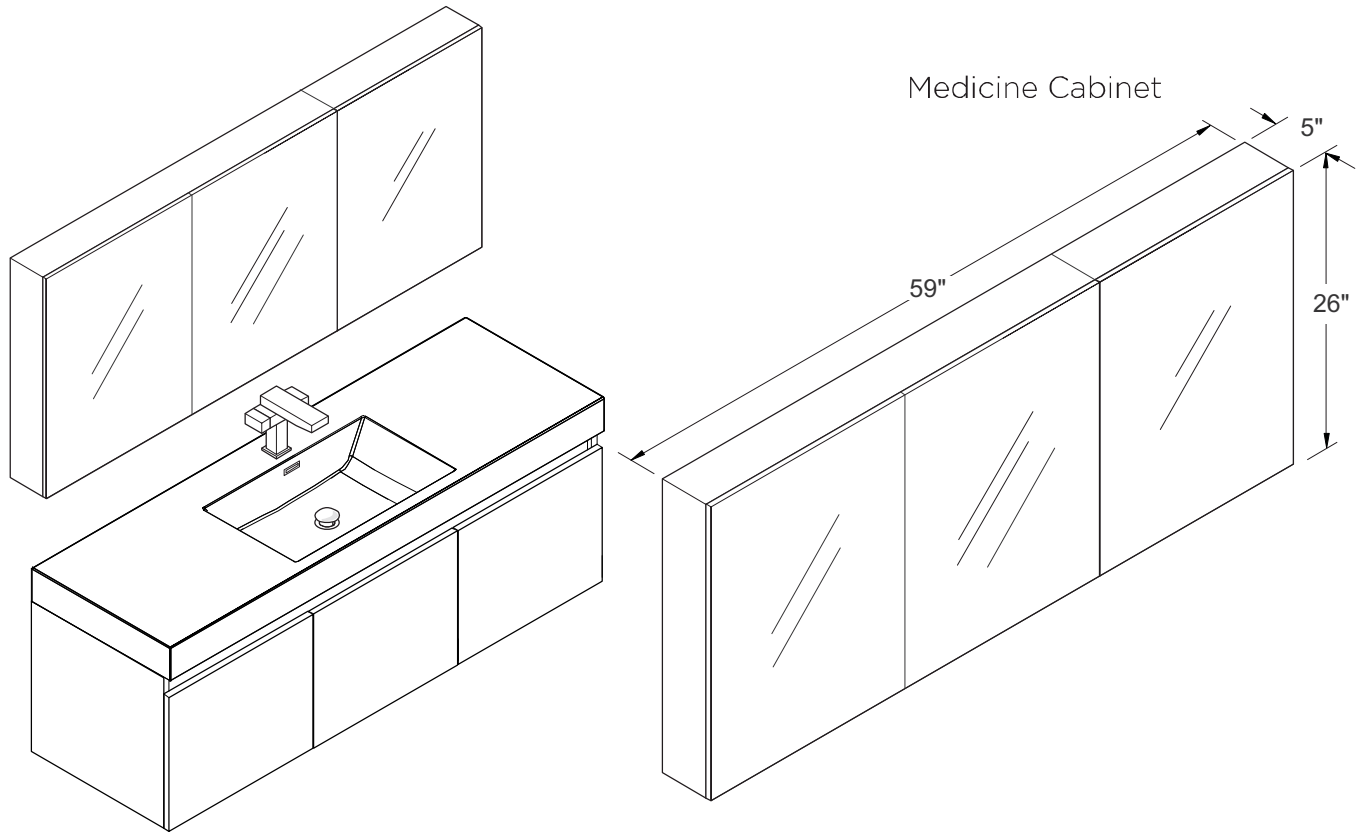




FVN8093
VISTA
INSTALLATION GUIDE

kitchensource.com
1.800.667.8721



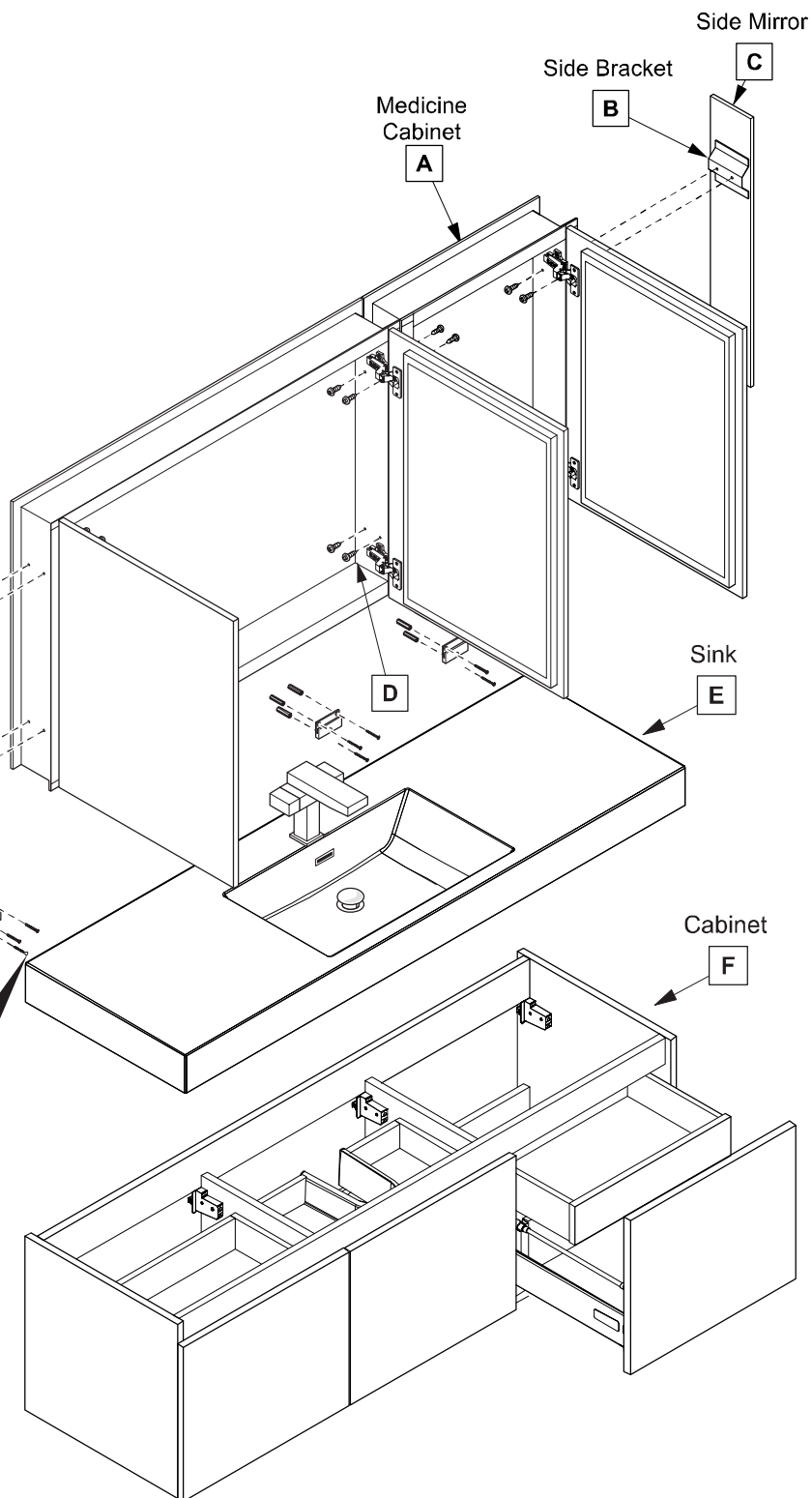
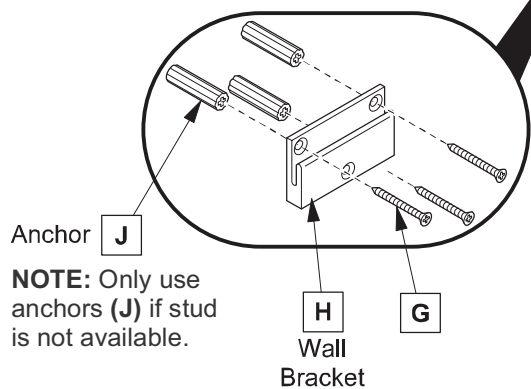
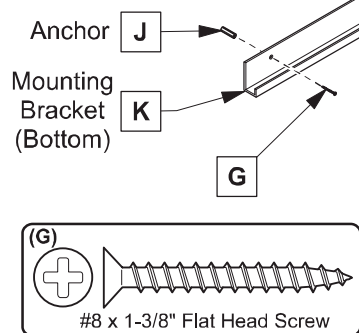
ALL DIMENSIONS & SPECIFICATIONS
ARE APPROXIMATE AND SUBJECT TO
CHANGE WITHOUT NOTICE.

TOOLS FOR ASSEMBLY

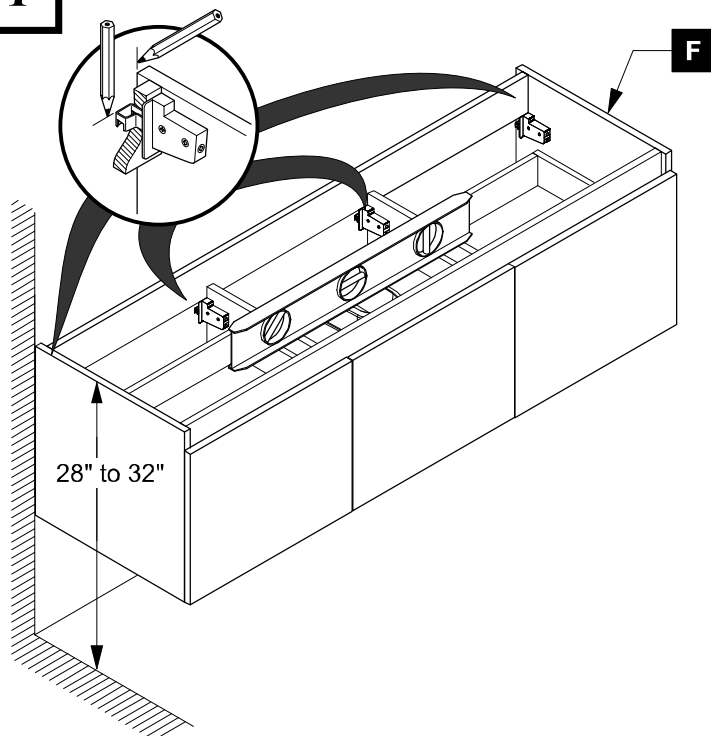
Illustration of tools for assembly: a power drill, a #2 screw, a 1/8 inch drill bit, a square, a pencil, a level, and a tube of silicone.

Diagram illustrating the top view of the mounting bracket assembly. The components are labeled as follows:

- Anchor (J)**: Points to the anchor bolt.
- Mounting Bracket (Top) (L)**: Points to the top surface of the mounting bracket.
- G**: Points to the mounting bracket.

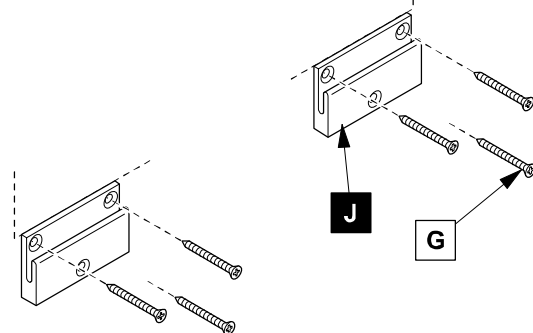
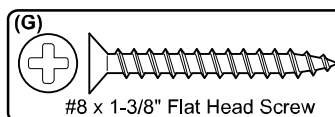


1 Locate cabinet (F) & mark location on the wall

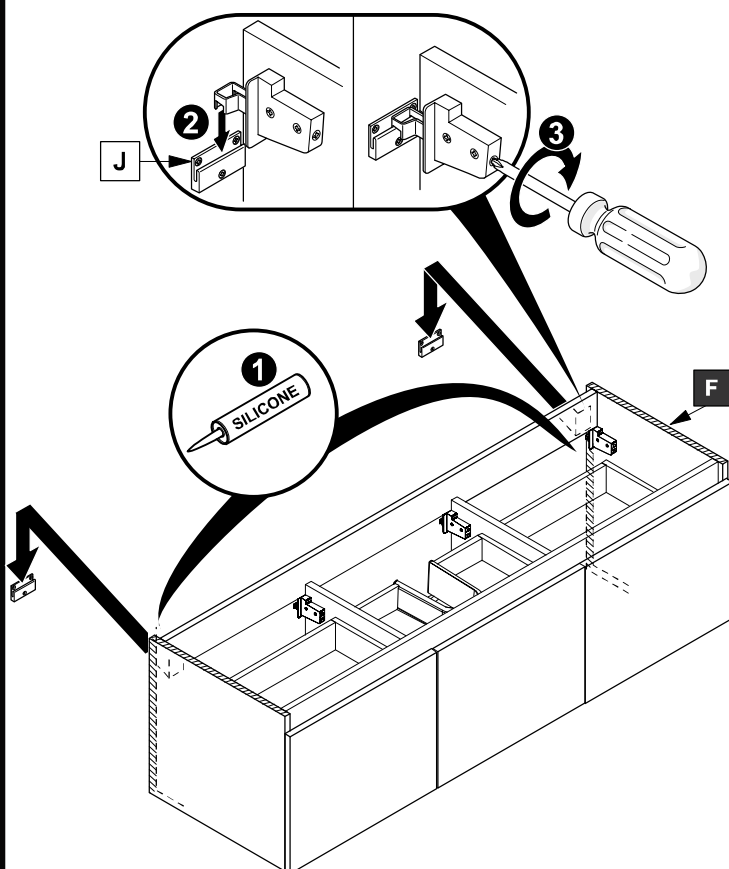


2 Install wall brackets (J)

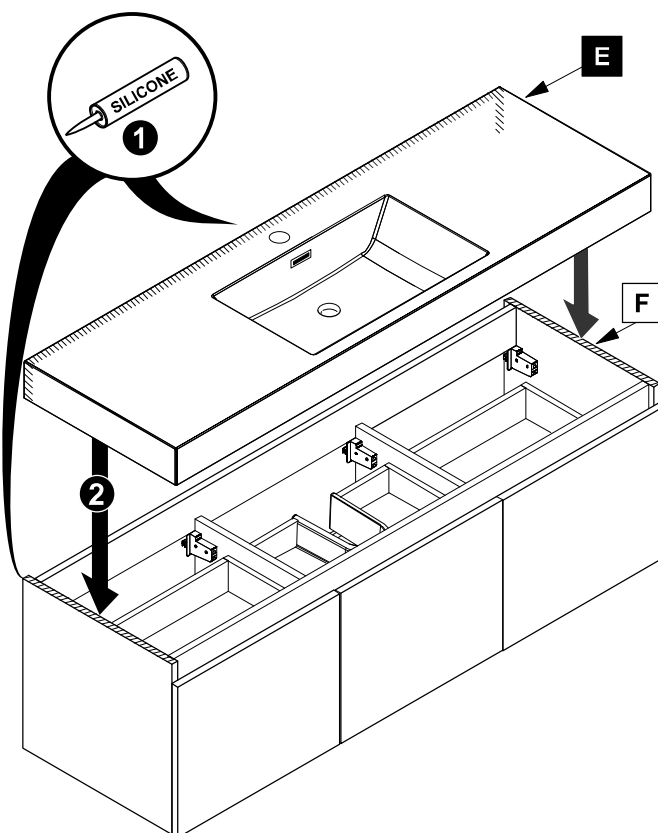
IMPORTANT: Consult an expert for the proper screws/bolts to use when attaching to various wall constructions. Screws provided do not attach to all wall construction types.



3 NOTE: If necessary remove drawers to access connection mechanism.



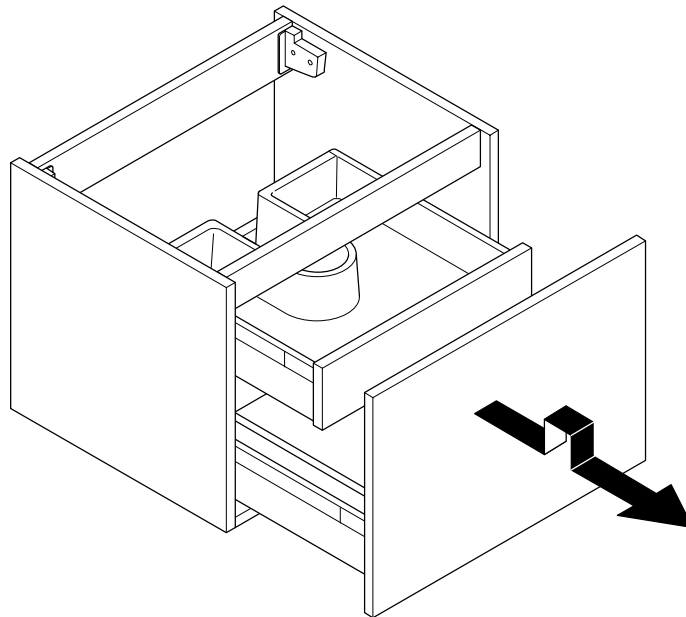
4 Apply silicone and install sink (E)



1**DRAWER REMOVAL & INSTALLATION**

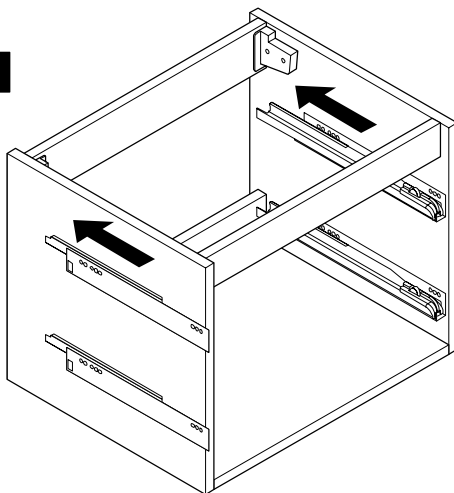
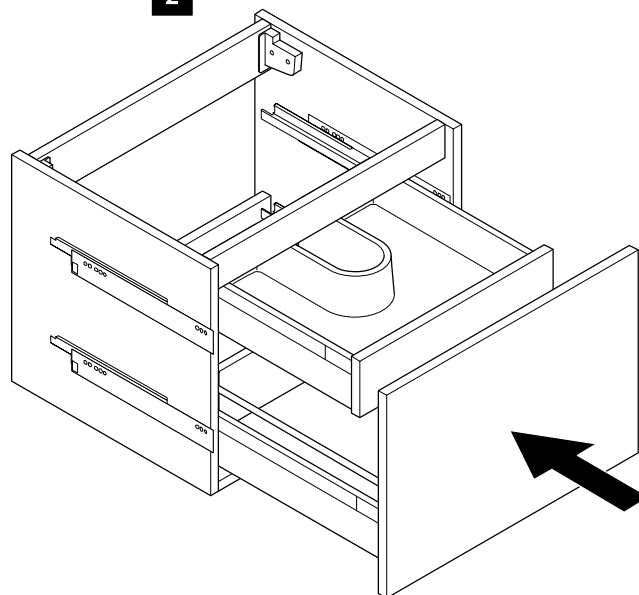
To remove drawer:

1. Pull the drawer open until the guides are fully extended.
2. Tilt drawer up and simultaneously pull the drawer out.

**2**

To instal drawer:

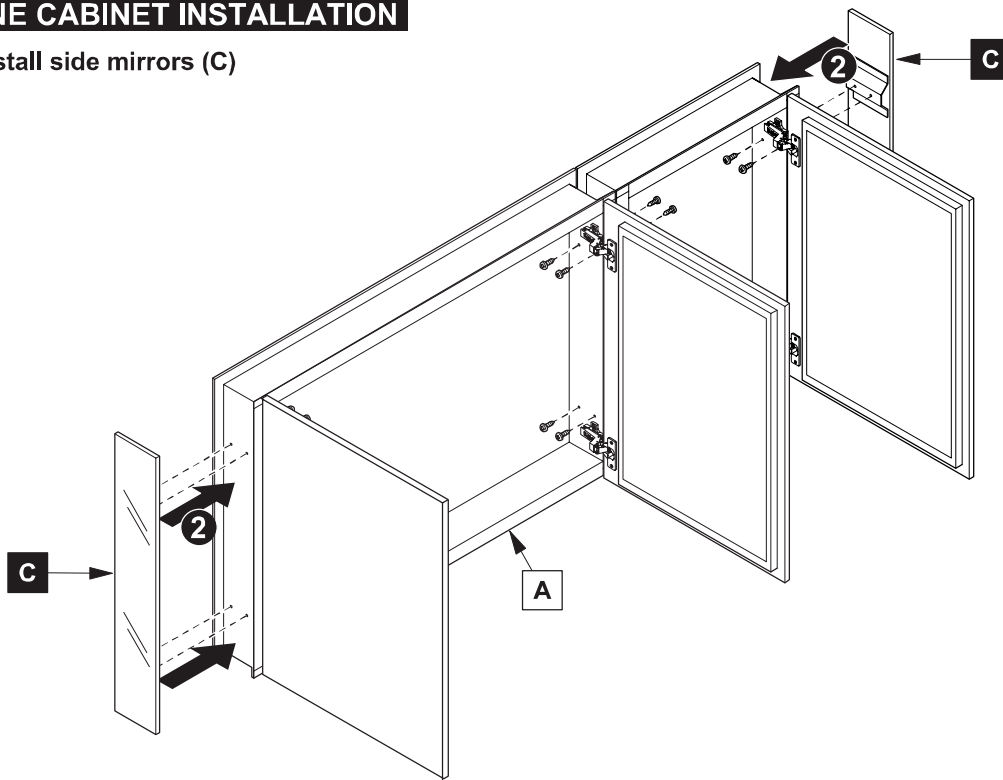
1. Line up drawer bottom with the glides on the right and left side.
2. Place the drawer on the glides and gently push into closed position.

1**2**

MEDICINE CABINET INSTALLATION

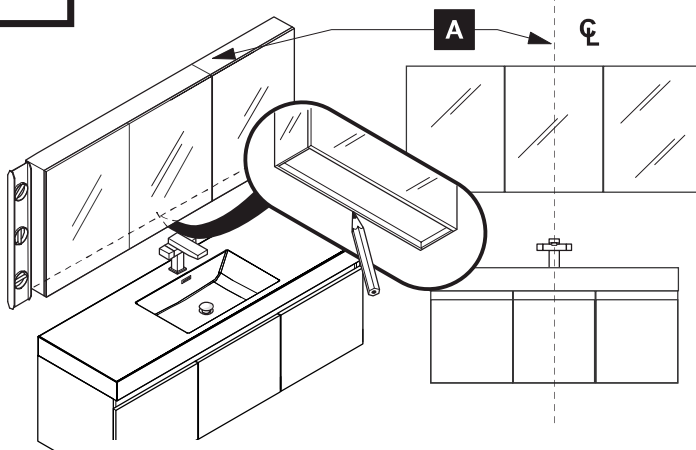
1

Install side mirrors (C)



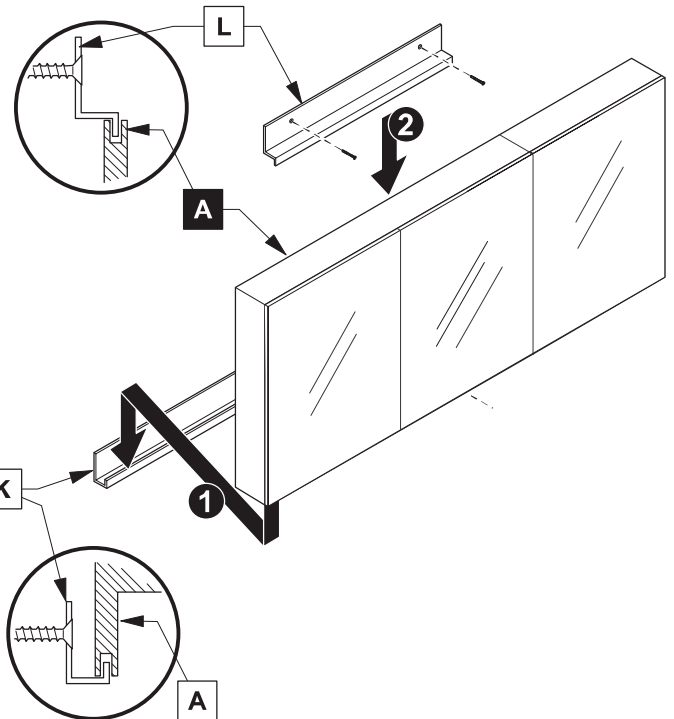
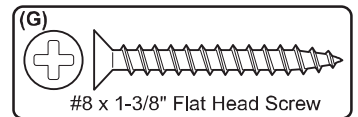
2

Mark cabinet (A) location



4

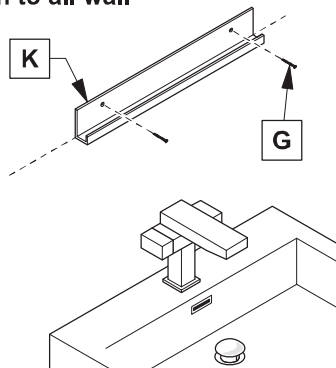
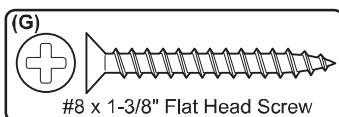
Install cabinet (A) and top bracket (L)

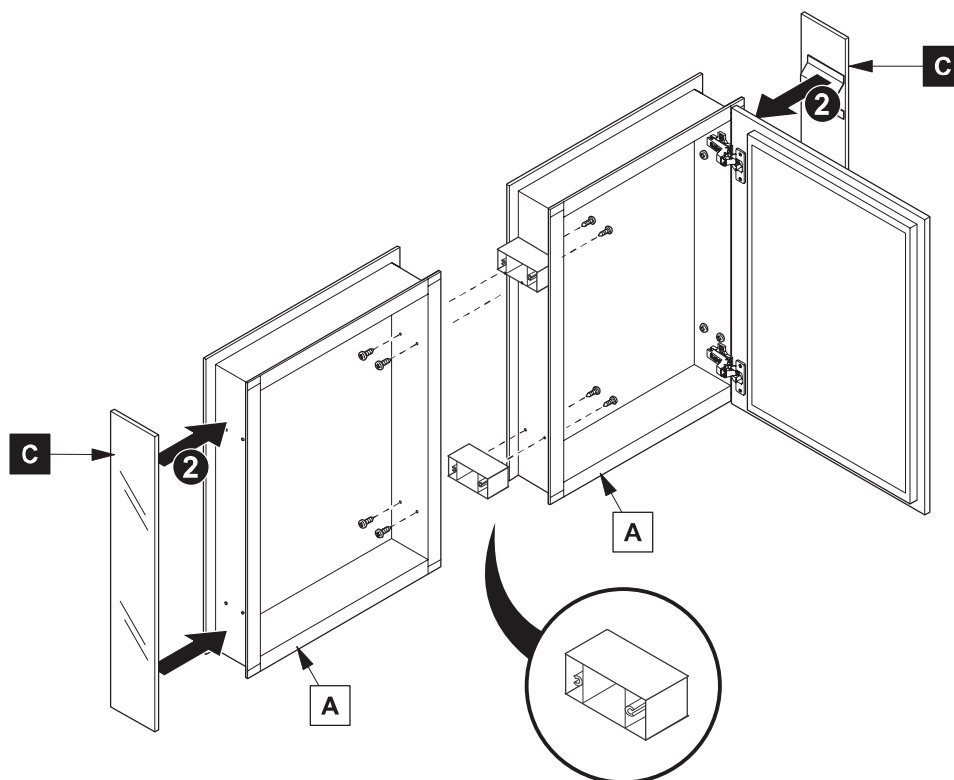


3

Install bottom bracket (K)

IMPORTANT: Consult an expert for the proper screws/bolts to use when attaching to various wall constructions. Screws provided do not attach to all wall construction types.

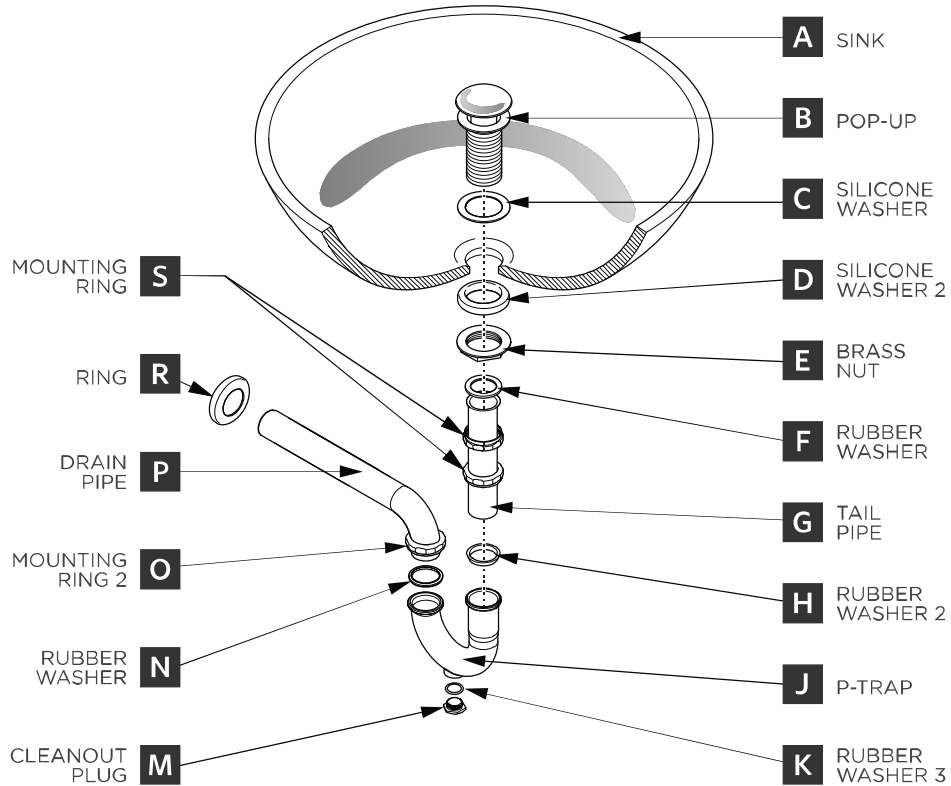




P-TRAP & POP-UP

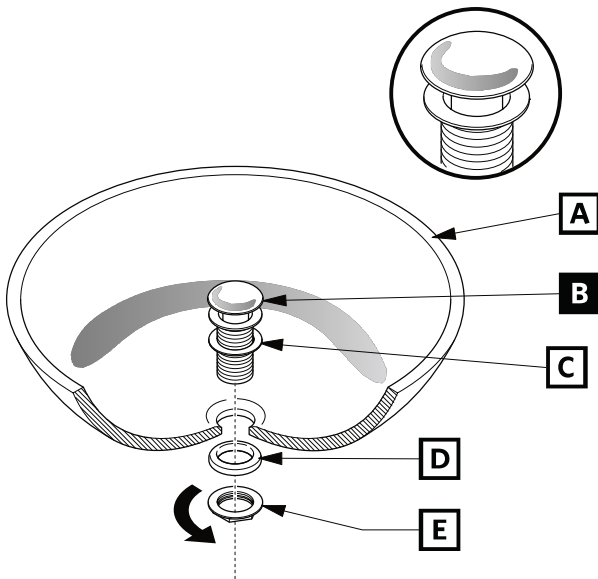
INSTALLATION INSTRUCTIONS

Your item may appear slightly different from the illustration.



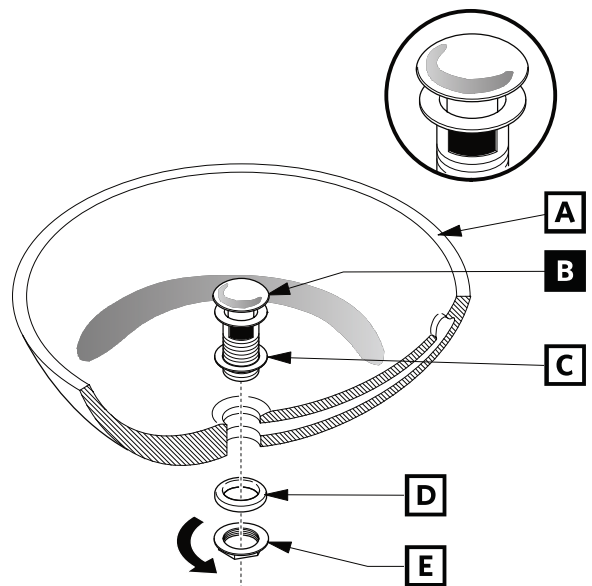
POP-UP INSTALLATION

FOR SINKS WITHOUT OVERFLOW



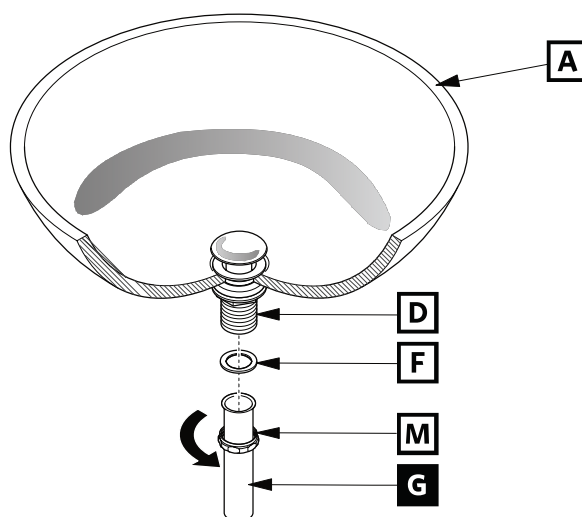
OR

FOR SINKS WITH OVERFLOW



P-TRAP INSTALLATION

1 Install tail pipe (G)



2 Install P-trap (J)

