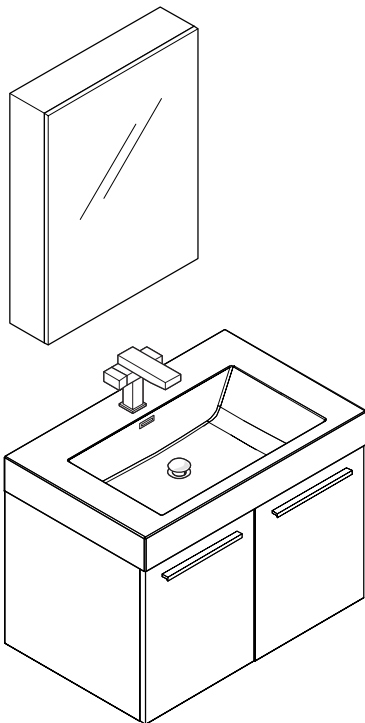
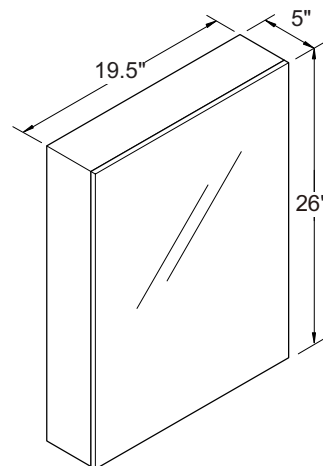


**FVN8089**  
**VISTA**  
**INSTALLATION GUIDE**

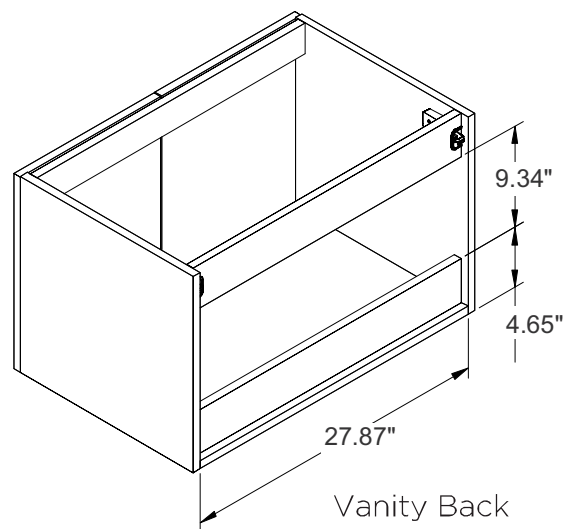
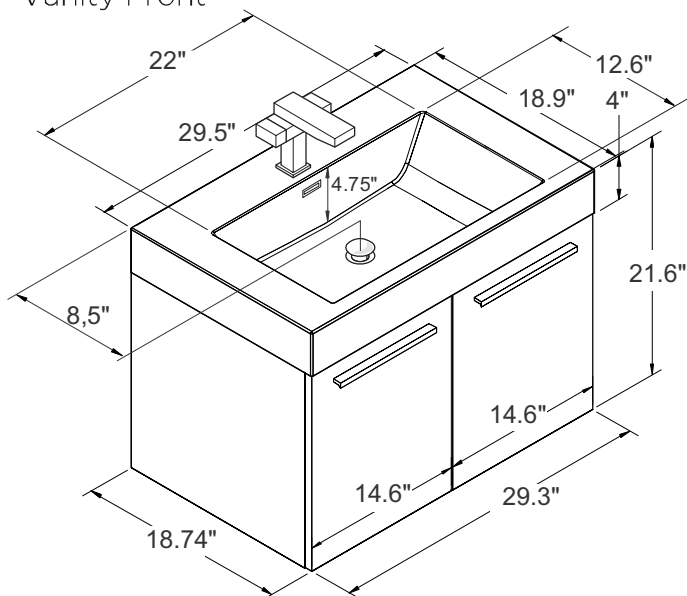
**∴kitchensource.com**  
1.800.667.8721



Medicine Cabinet



Vanity Front

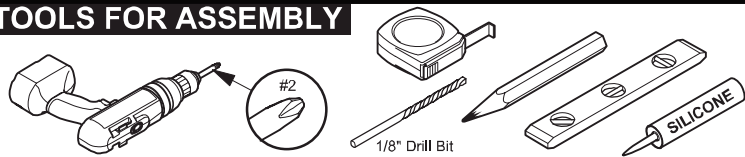


Vanity Back

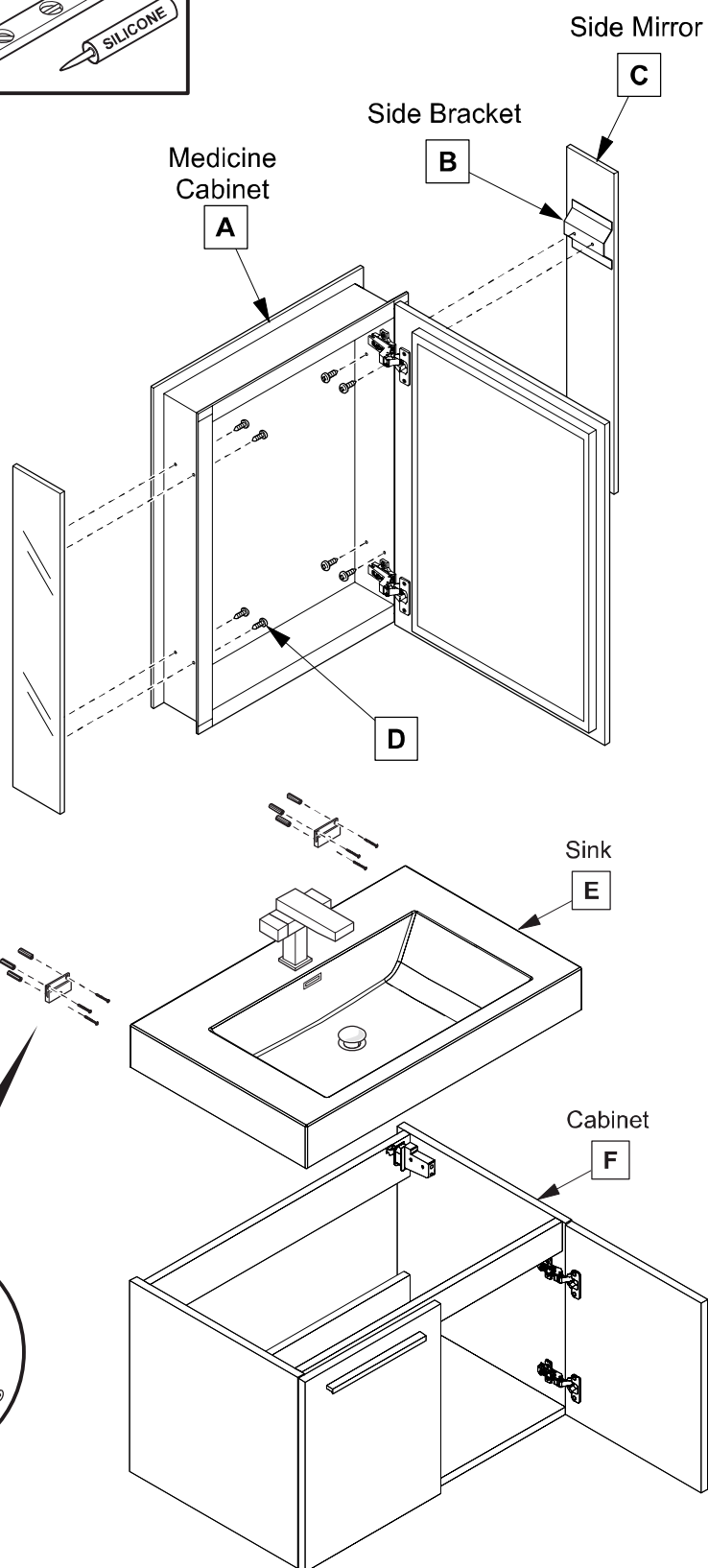
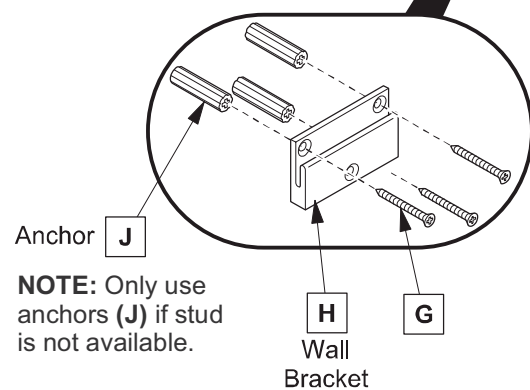
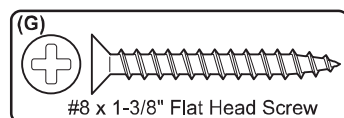
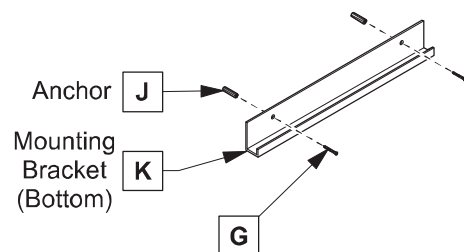
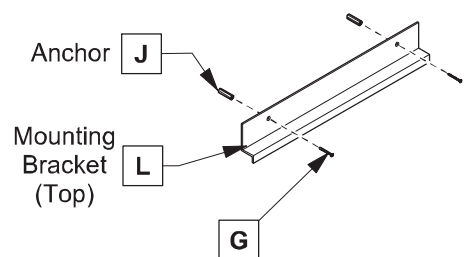


ALL DIMENSIONS & SPECIFICATIONS  
ARE APPROXIMATE AND SUBJECT TO  
CHANGE WITHOUT NOTICE.

## TOOLS FOR ASSEMBLY

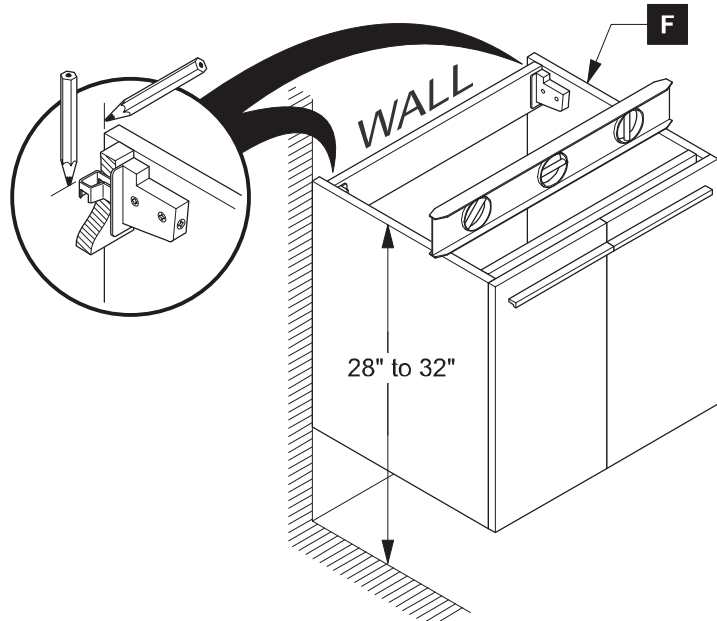


## PARTS



1

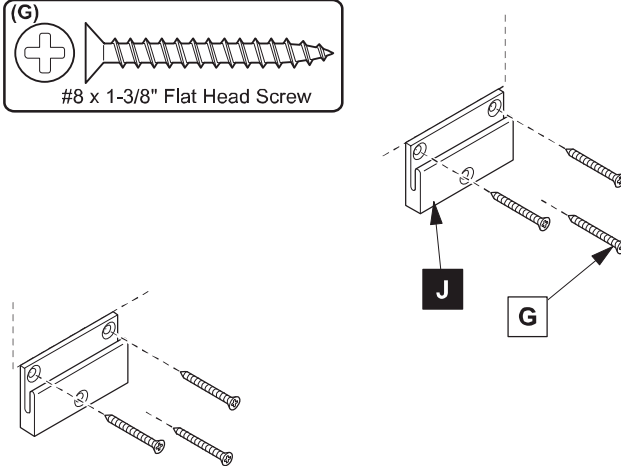
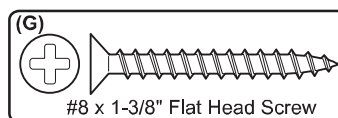
Locate cabinet (F) &amp; mark location on the wall



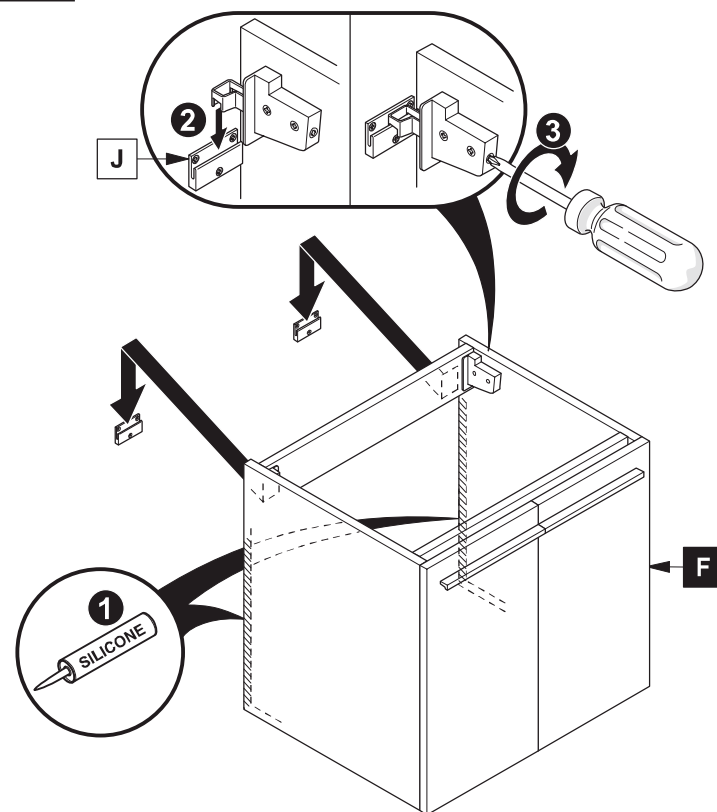
2

Install wall brackets (J)

**IMPORTANT:** Consult an expert for the proper screws / bolts to use when attaching to various wall constructions. Screws provided *do not* attach to all wall construction types.

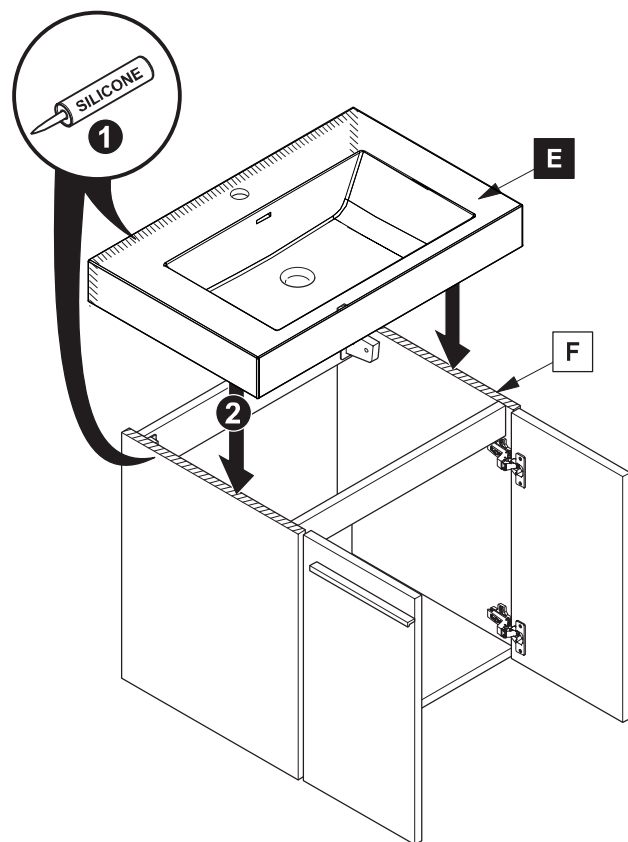


3



4

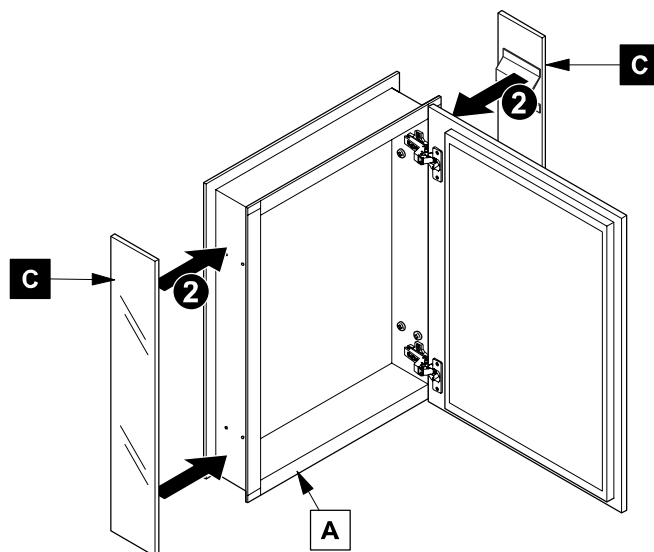
Apply silicone and install sink (E)



# MEDICINE CABINET INSTALLATION

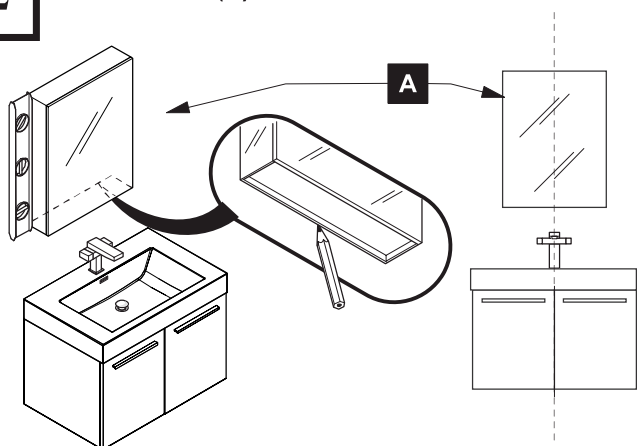
1

Install side mirrors (C)



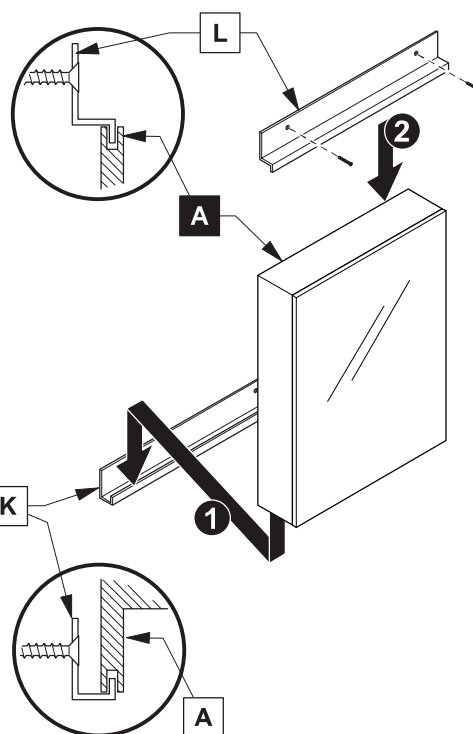
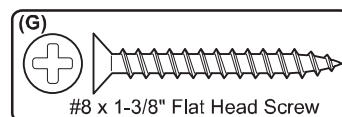
2

Mark cabinet (A) location



4

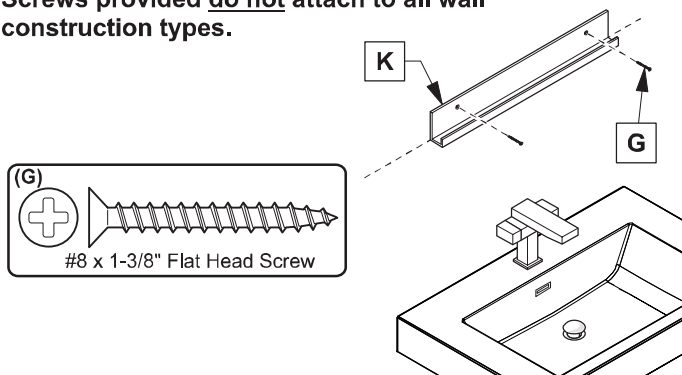
Install cabinet (A) and top bracket (L)



3

Install bottom bracket (K)

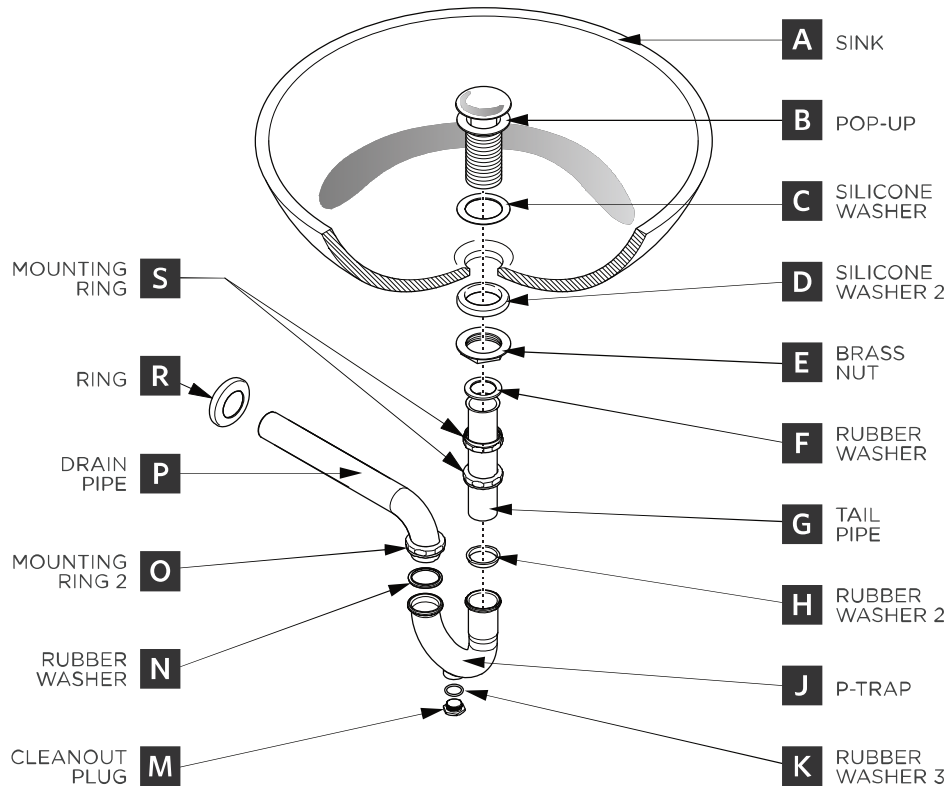
**IMPORTANT:** Consult an expert for the proper screws/bolts to use when attaching to various wall constructions. Screws provided do not attach to all wall construction types.



## P-TRAP & POP-UP

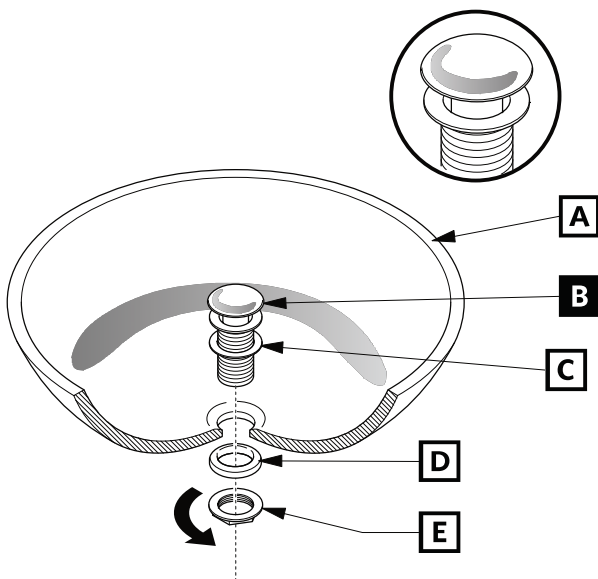
### INSTALLATION INSTRUCTIONS

Your item may appear slightly different from the illustration.



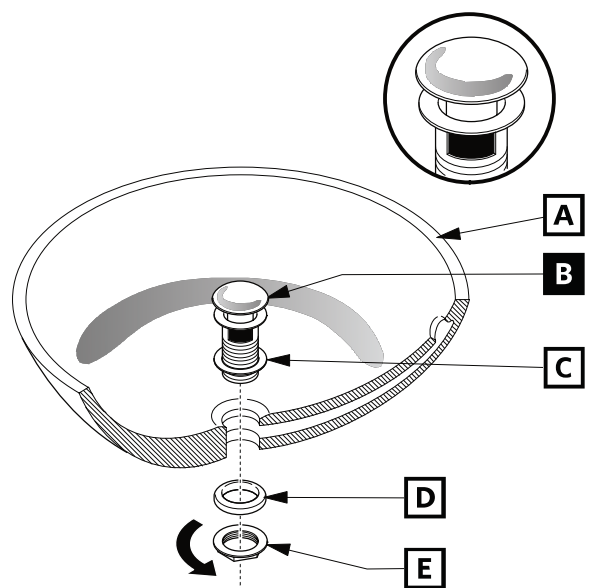
### POP-UP INSTALLATION

#### FOR SINKS WITHOUT OVERFLOW



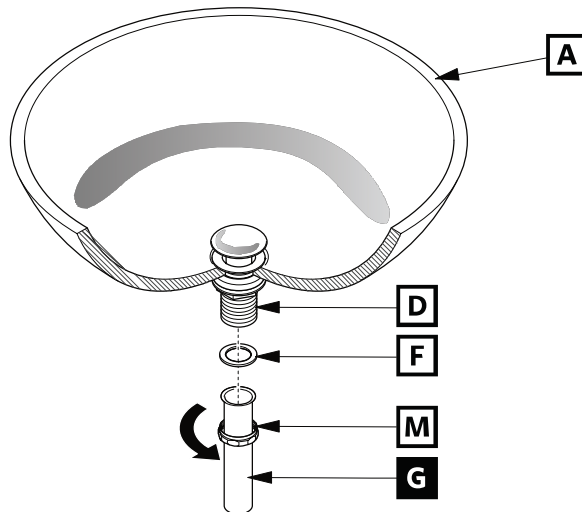
OR

#### FOR SINKS WITH OVERFLOW



## P-TRAP INSTALLATION

### 1. Install tail pipe (G)



### 2. Install P-trap (J)

