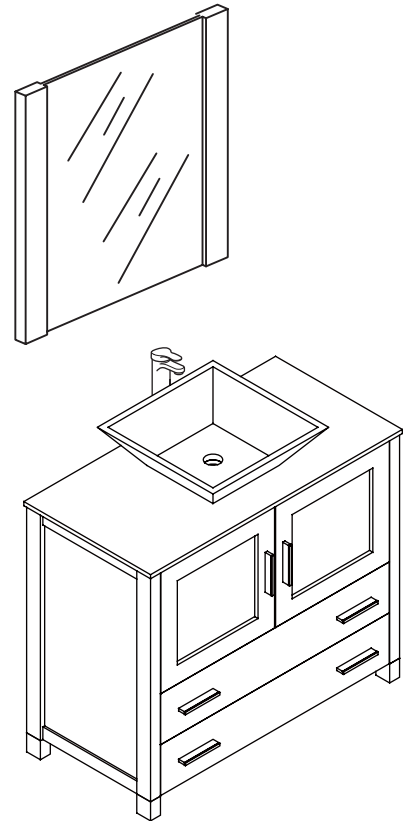
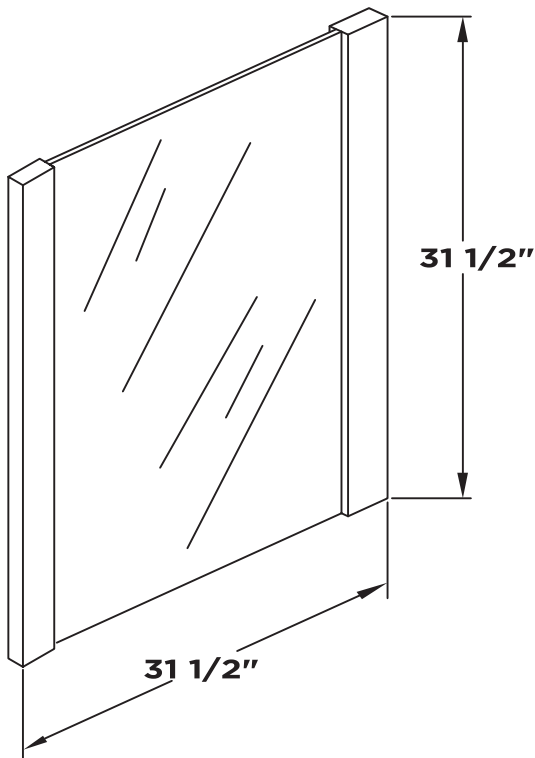


**FVN6236-VSL**  
**TORINO**  
**INSTALLATION GUIDE**

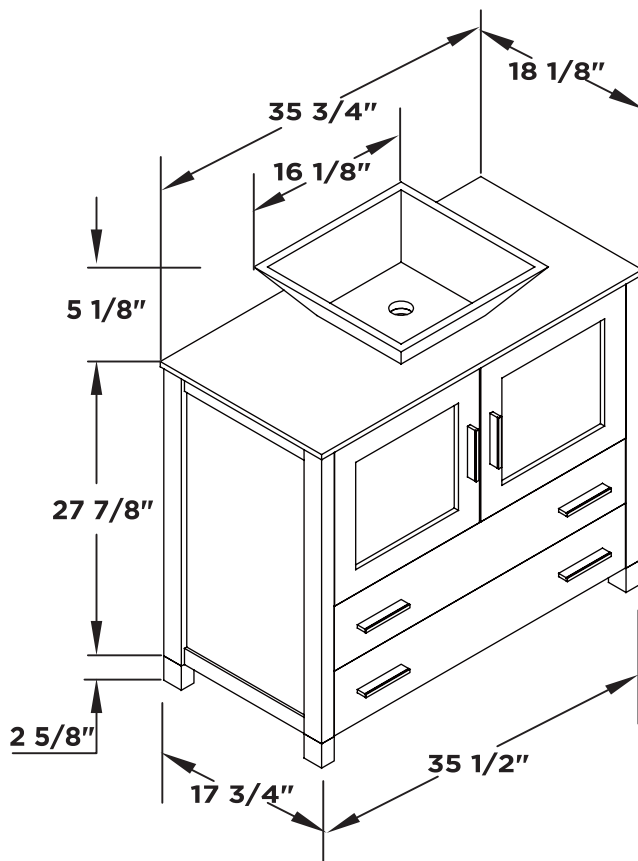
**kitchensource.com**  
1.800.667.8721

**FRESCA®**

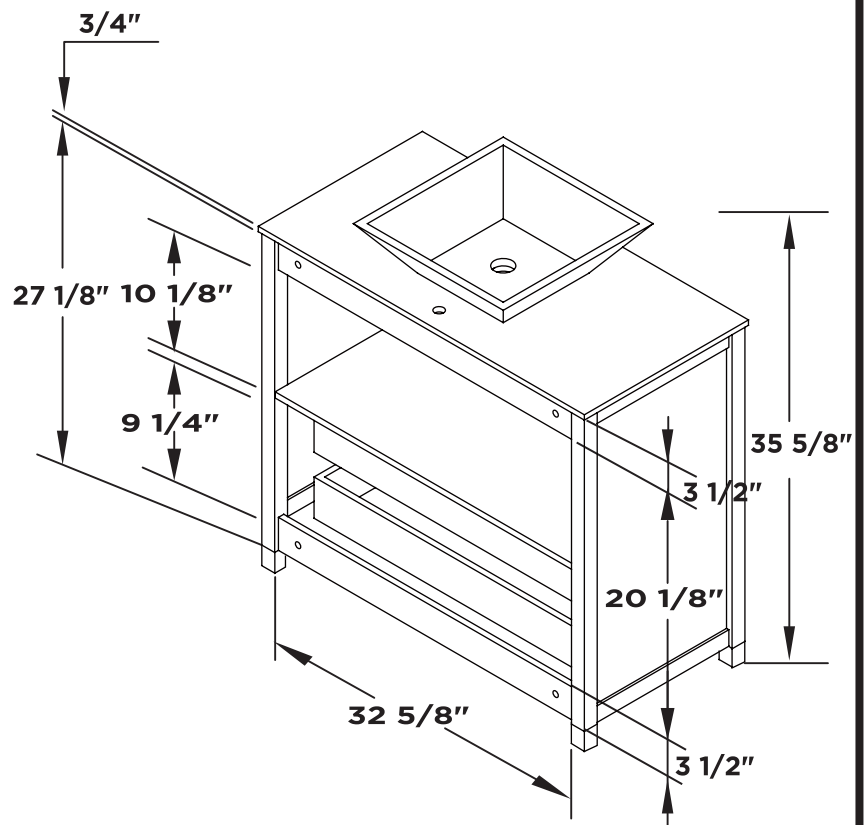
Mirror



Vanity Front



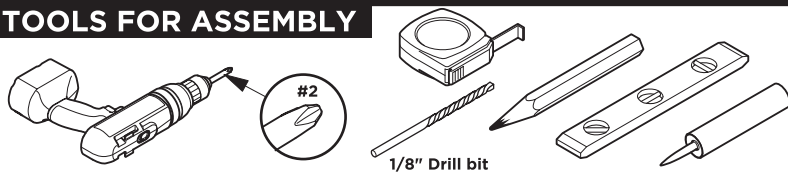
Vanity Back



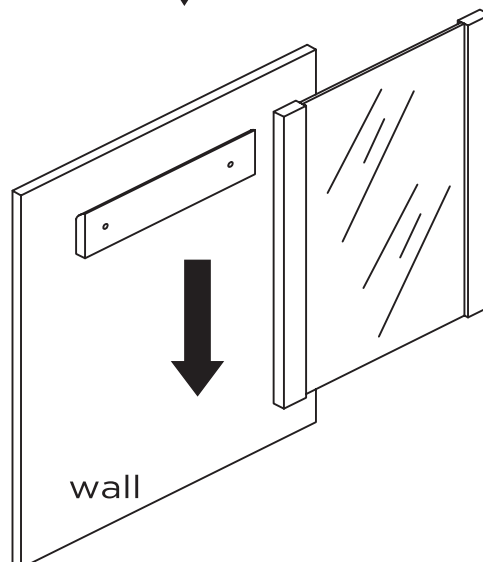
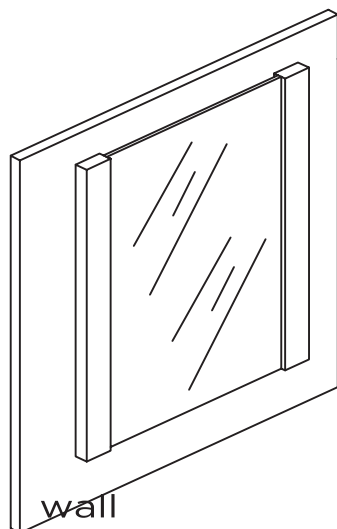
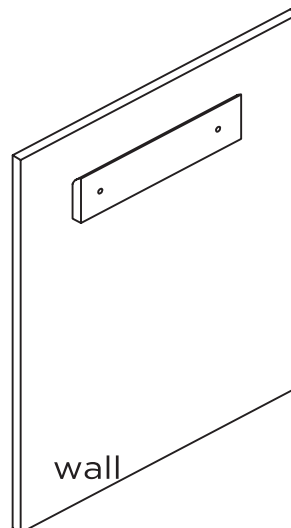
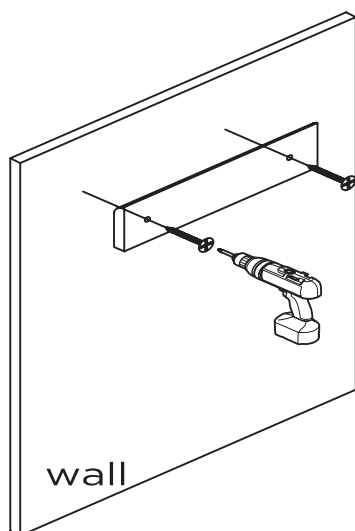
**TORINO INSTALLATION GUIDE**

PAGE 1

## TOOLS FOR ASSEMBLY

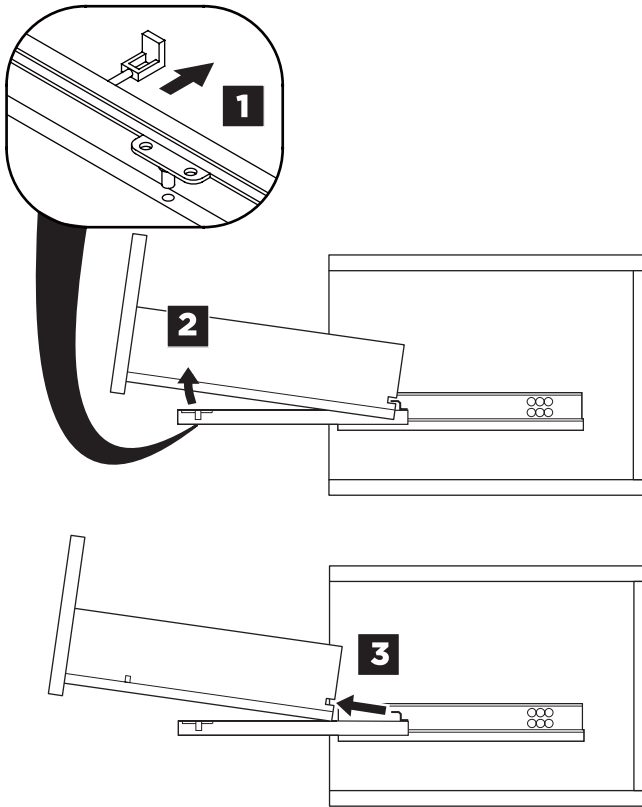


### MIRROR INSTALLATION

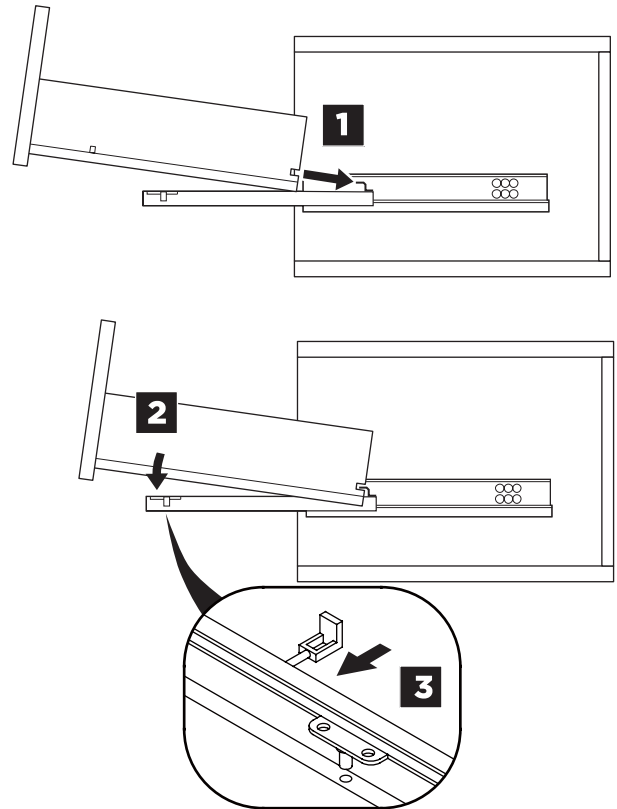


## DRAWER REMOVAL & INSTALLATION

### REMOVAL

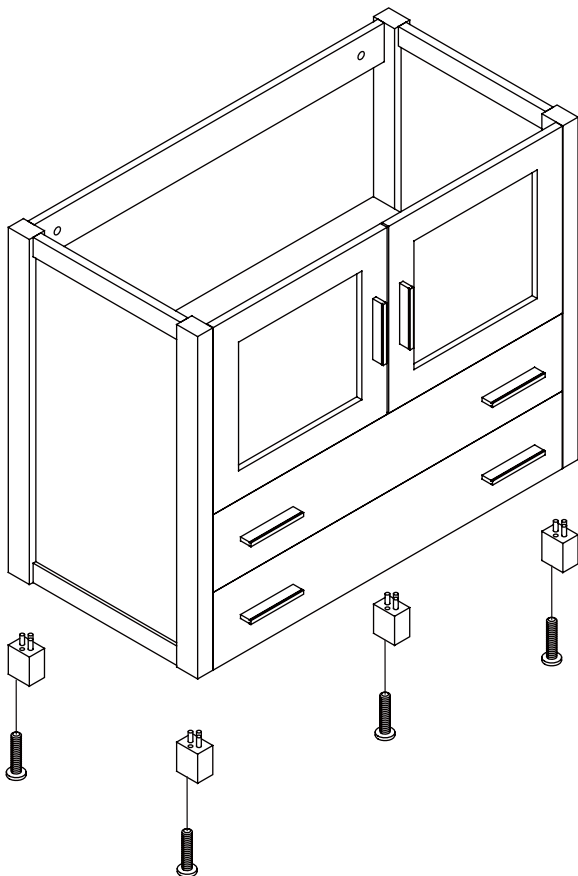


### INSTALLATION



1

Install leg



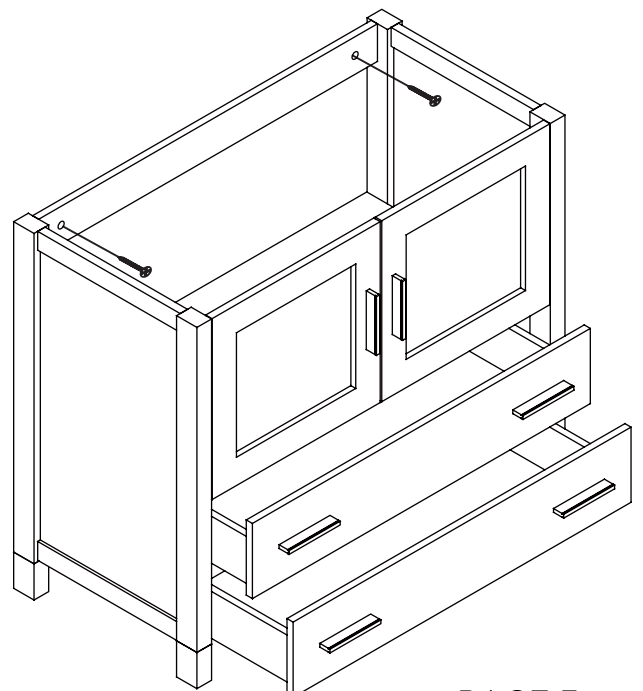
2

Remove drawer

3

Install cabinet

**IMPORTANT:** Consult an expert for the proper screws/bolts to use when attaching to various wall constructions. Screws provided do not attach to all wall construction types.

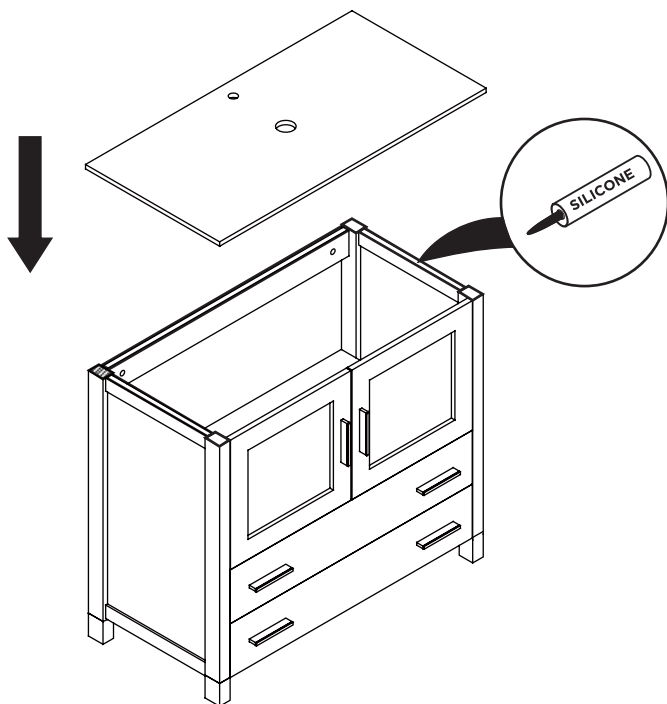


TORINO INSTALLATION GUIDE

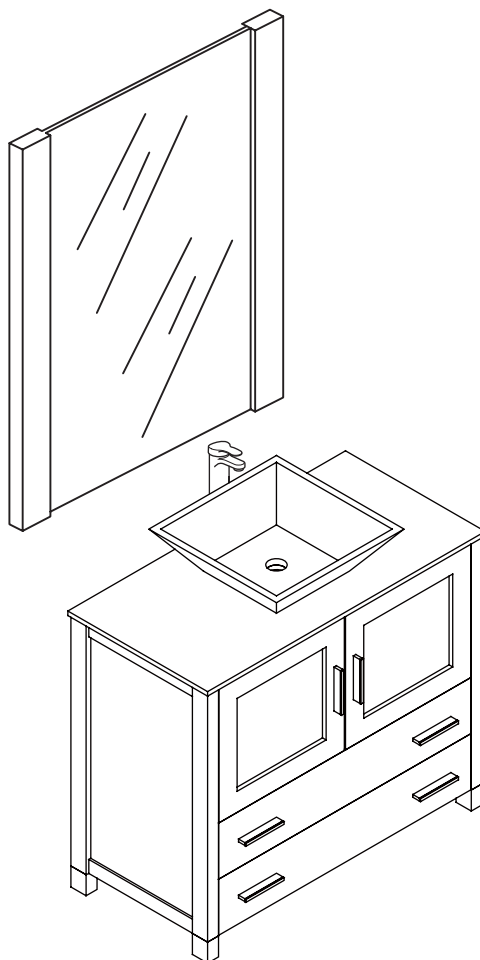
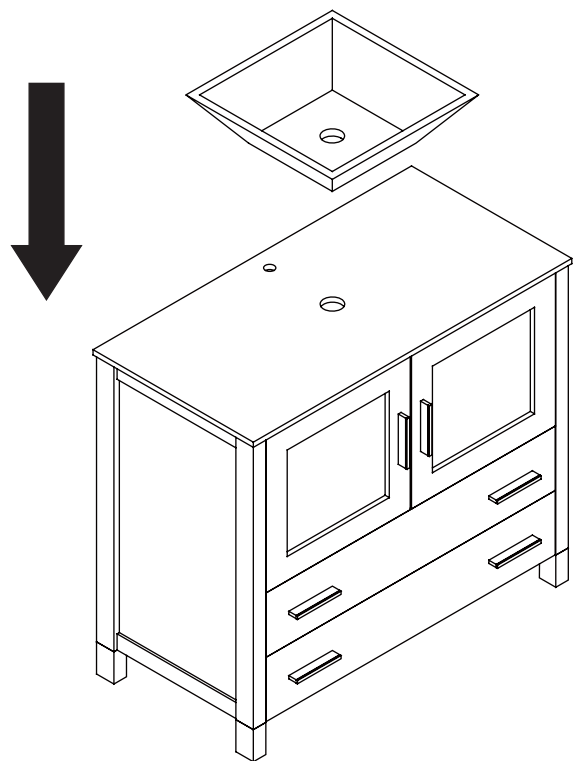
PAGE 3

**4**

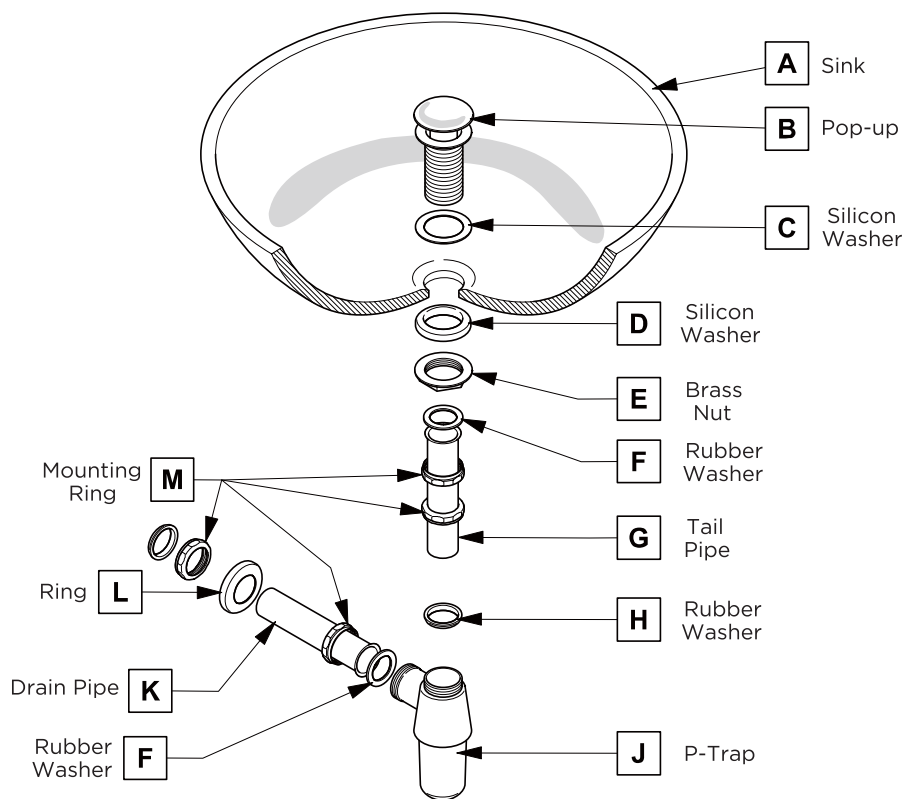
Install Top panel

**5**

Install Sink

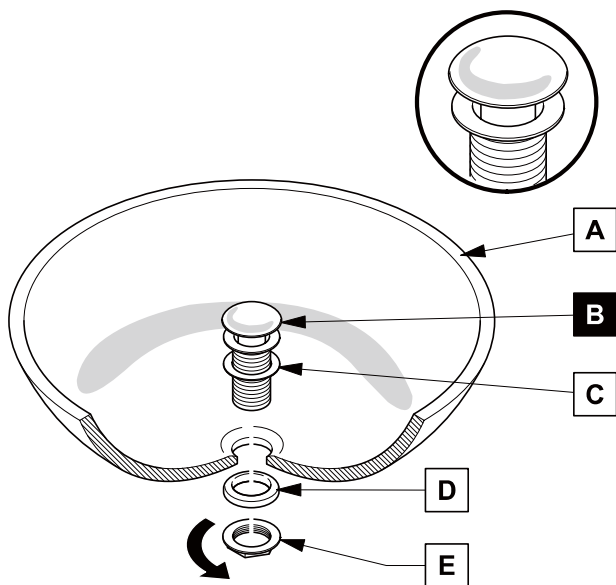


## P-TRAP AND POP-UP INSTALLATION INSTRUCTIONS



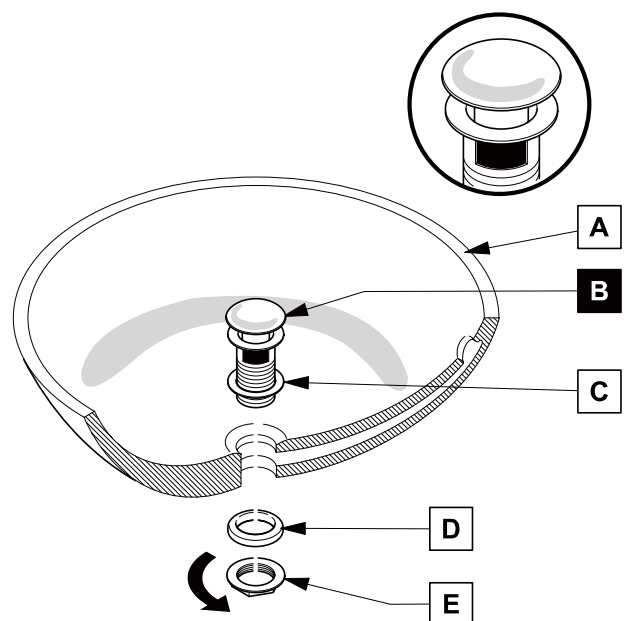
### **POP-UP INSTALLATION**

#### FOR SINKS WITHOUT OVERFLOW



**OR**

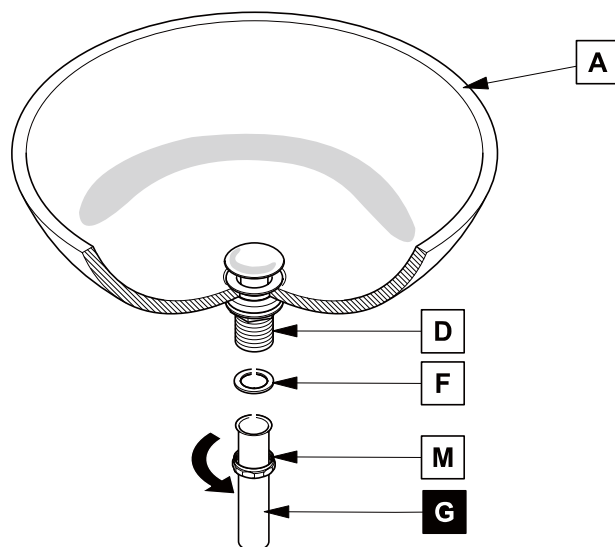
#### FOR SINKS WITH OVERFLOW



## P-TRAP INSTALLATION

# 1

### Install tail pipe (G)



2

### Install p-trap (J)

