



Stella
COLLECTION

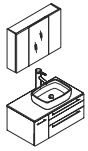
LUCERA

FVN6136-VSL-R

INSTALLATION GUIDE

CONTENTS:

Medicine Cabinet.....	FMC6183.....	PAGE 2
Cabinet	FCB6136-VSL-R.....	PAGE 3
Sink	FVS6119WH.....	PAGE 4
Counter Top.....	FCT6136WH-VSL-R.....	PAGE 4

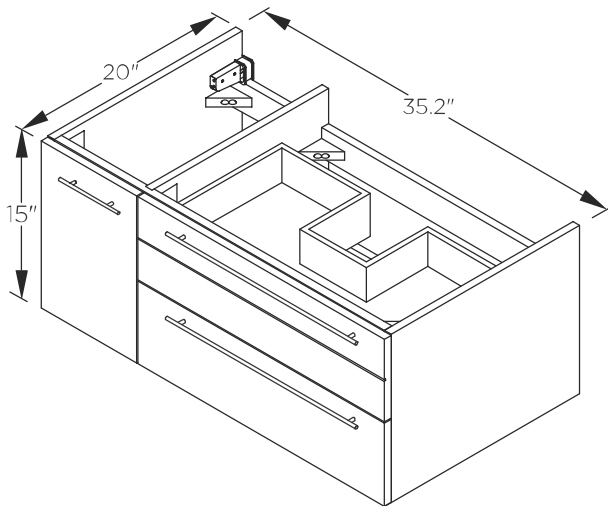
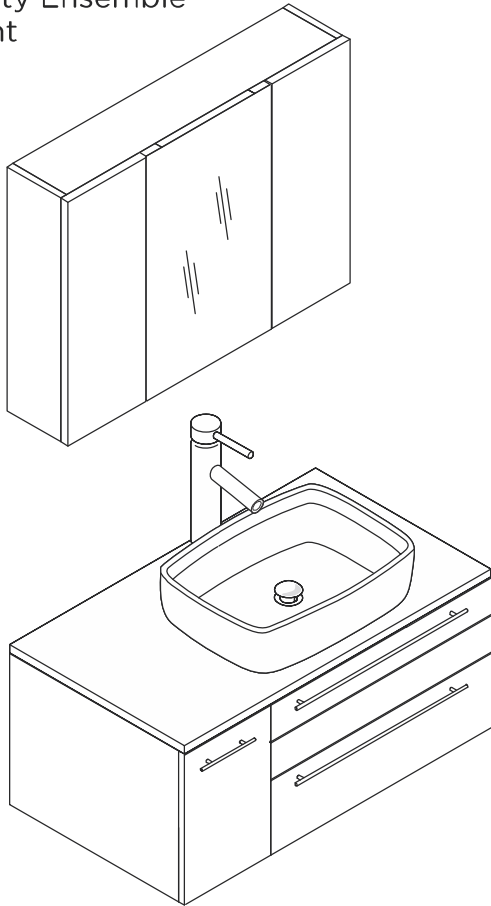


FVN6136-VSL-R LUCERA INSTALLATION GUIDE



FVN6136-VSL-R

Vanity Ensemble
Front

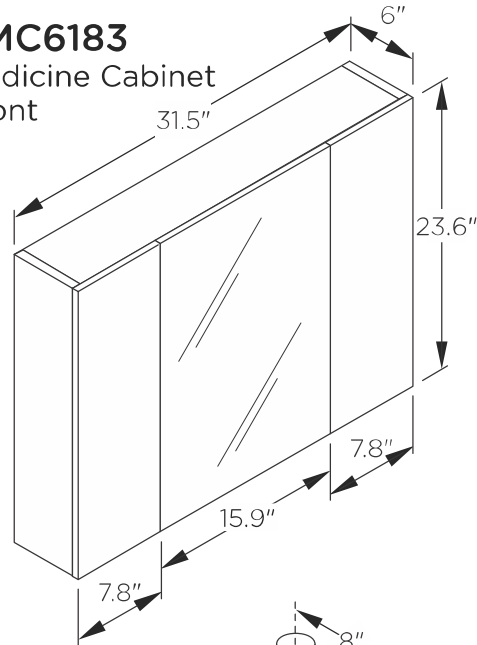


FCB6136-VSL-R

Cabinet Front

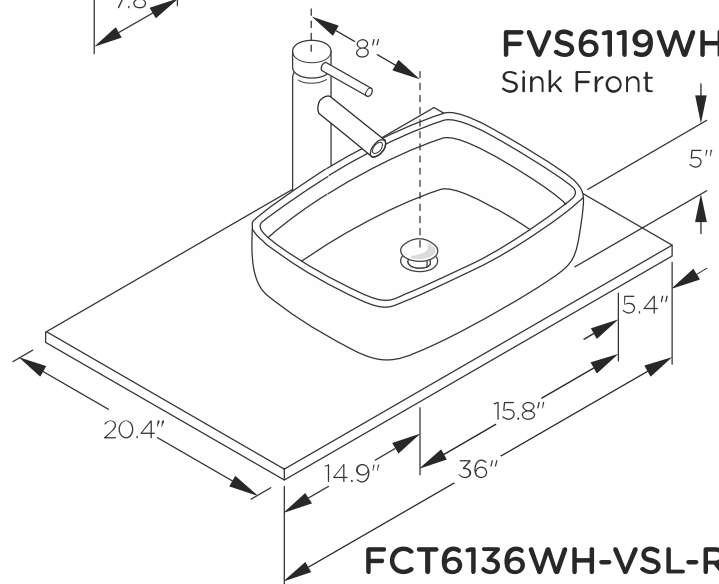
FMC6183

Medicine Cabinet
Front



FVS6119WH

Sink Front

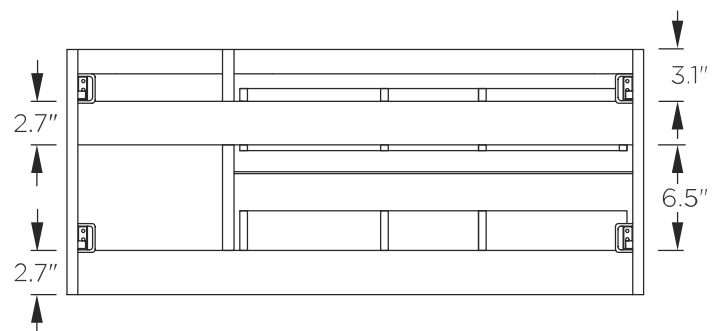


FCT6136WH-VSL-R

Counter Top Front

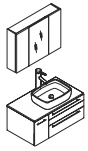
FCB6136-VSL-R

Cabinet Back



>All dimensions & specifications are approximate and subject to change without notice.

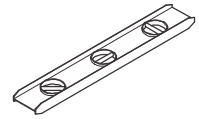
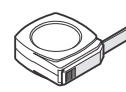
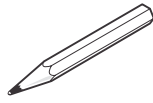
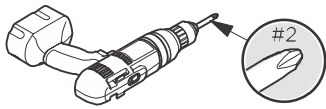




FVN6136-VSL-R LUCERA INSTALLATION GUIDE



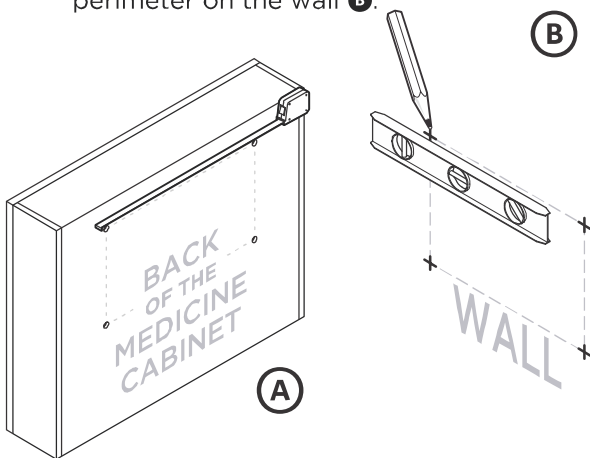
TOOLS FOR ASSEMBLY



MEDICINE CABINET INSTALLATION

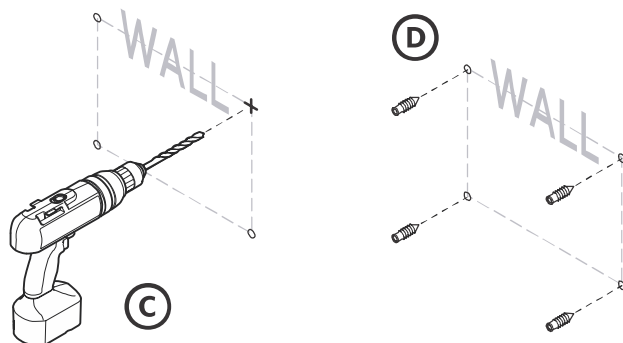
1

Measure distance between the mounting holes on the back of medicine cabinet **A** and mark the perimeter on the wall **B**.



2

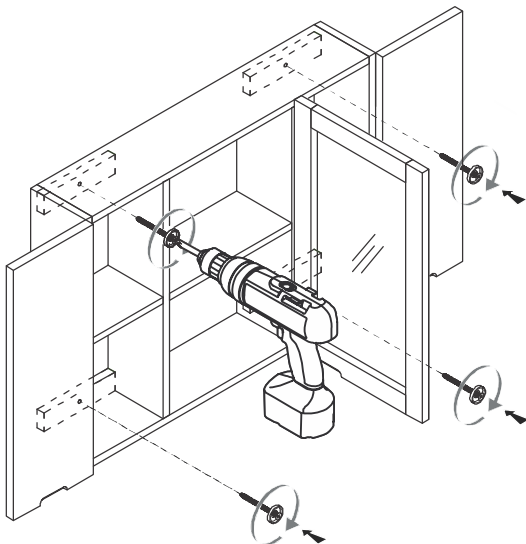
Once marked, drill the holes in the wall **C**.
*Insert the anchors in the holes **D**.



***IMPORTANT:** Consult an expert for the proper screws/bolts to use when attaching to various constructions. Screws provided do not attach to all wall construction types. Anchors are not required if brackets are installed in stud.

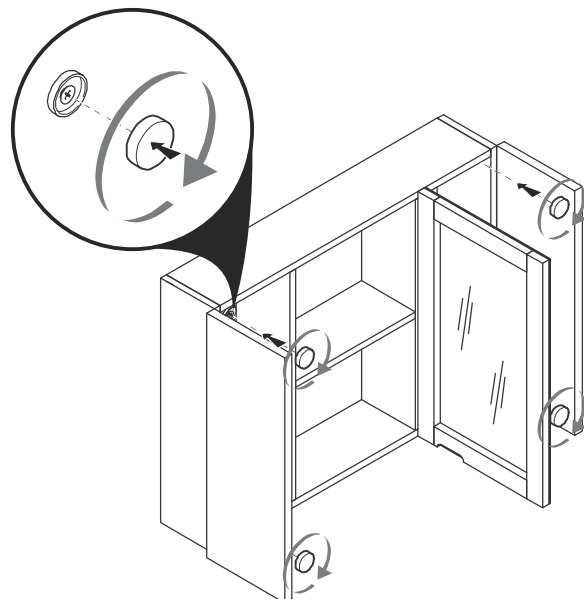
3

Connect medicine cabinet to the wall using a drill.



4

Cover the screws with the screw caps.





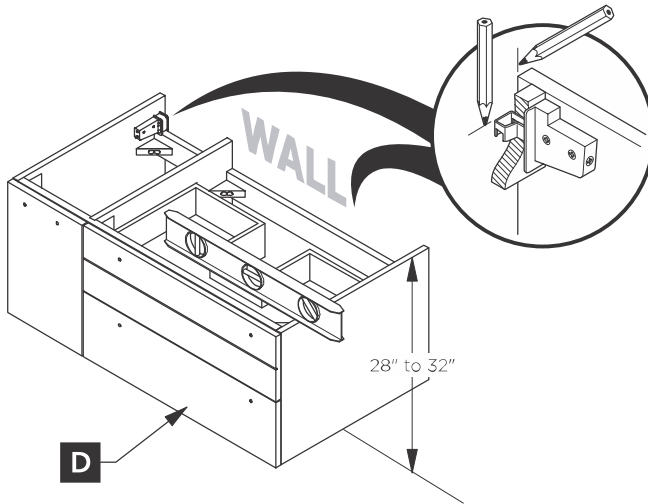
FVN6136-VSL-R LUCERA INSTALLATION GUIDE



CABINET INSTALLATION

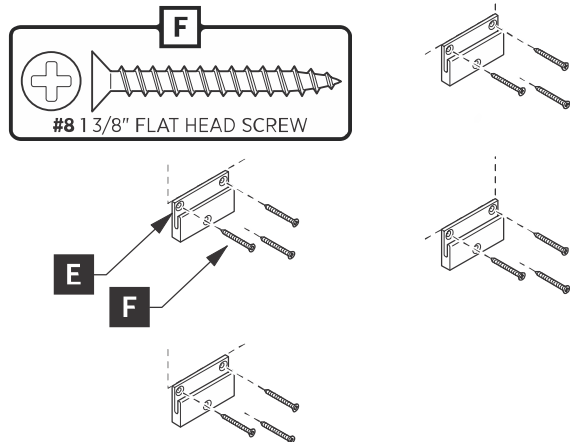
1

Place cabinet (D) in designated location and mark the bracket position on the wall.



2

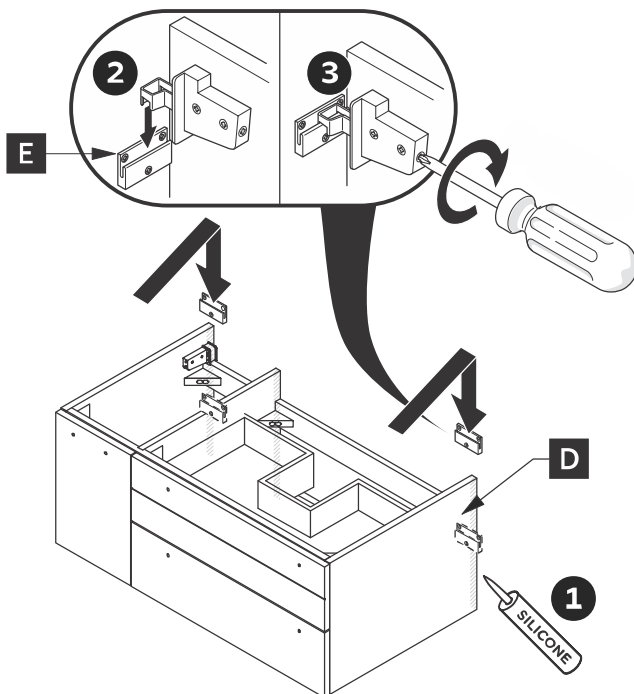
Attach wall brackets (E) to the wall with the screws (F).



IMPORTANT: Consult an expert for the proper screws/bolts to use when attaching to various constructions. Screws provided do not attach to all wall construction types. Anchors are not required if brackets are installed in stud.

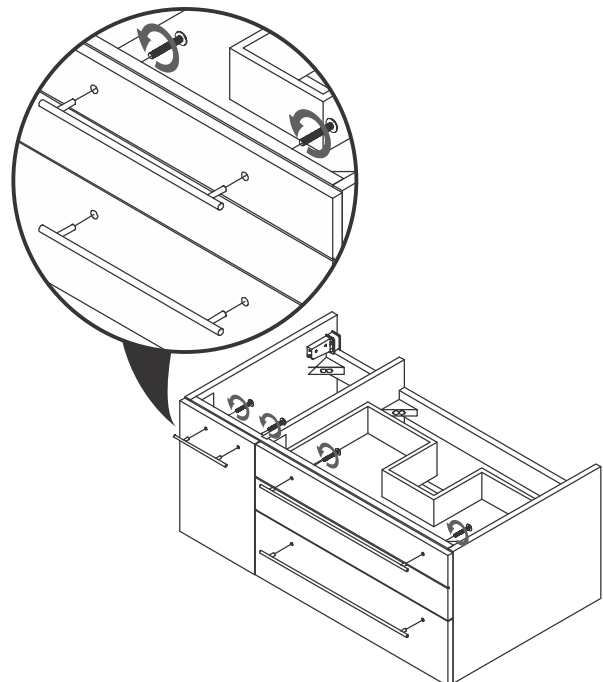
3

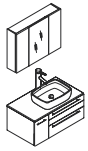
Apply a bid of silicone and hang the cabinet (D) on the brackets (E).



4

Attach the handles to cabinet.





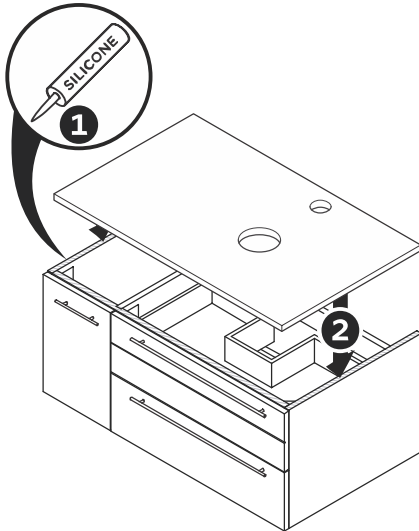
FVN6136-VSL-R LUCERA INSTALLATION GUIDE



CABINET INSTALLATION

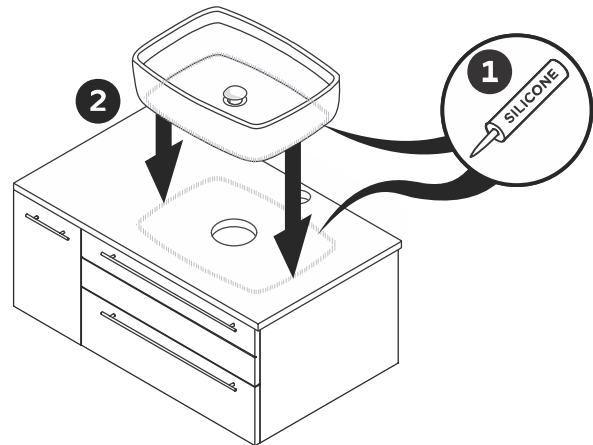
5

Apply a bead of silicone on top of the cabinet. Place counter top on the cabinet.



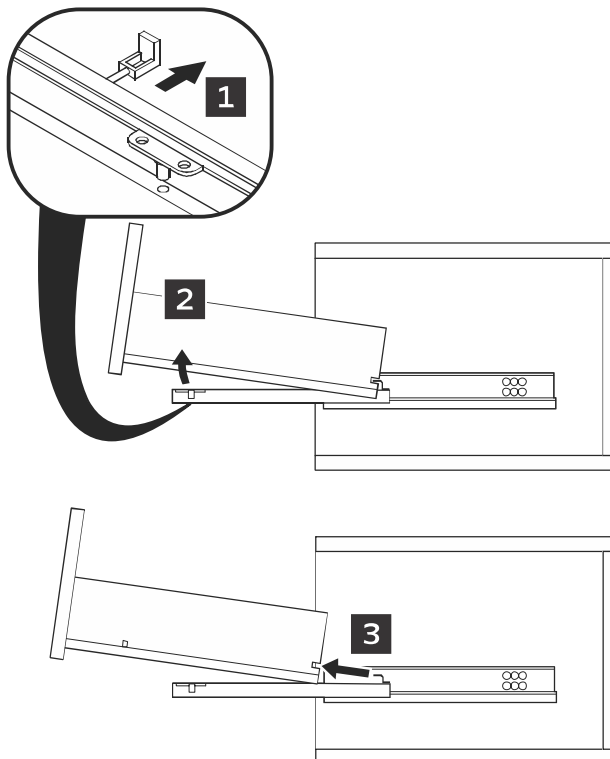
6

Apply a bead of silicone on top of a counter top and bottom of the sink. Connect sink to the counter top.

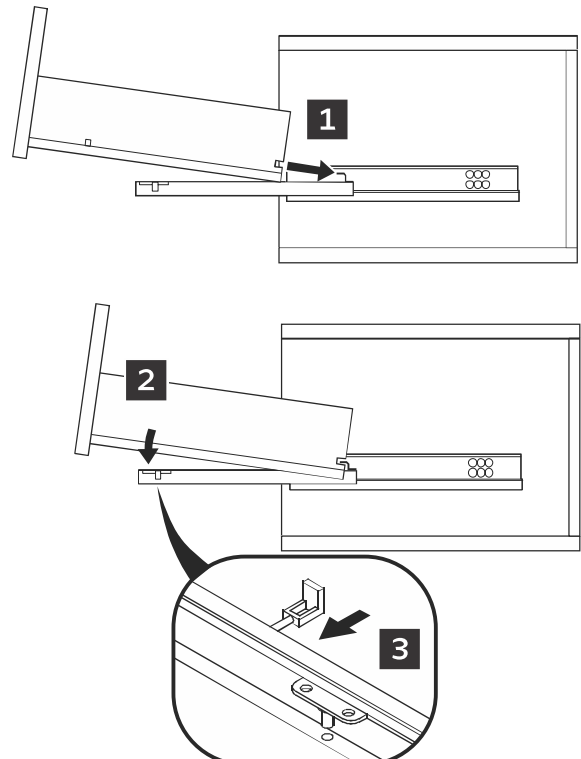


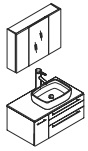
DRAWER REMOVAL & INSTALLATION

DRAWER REMOVAL



DRAWER INSTALLATION





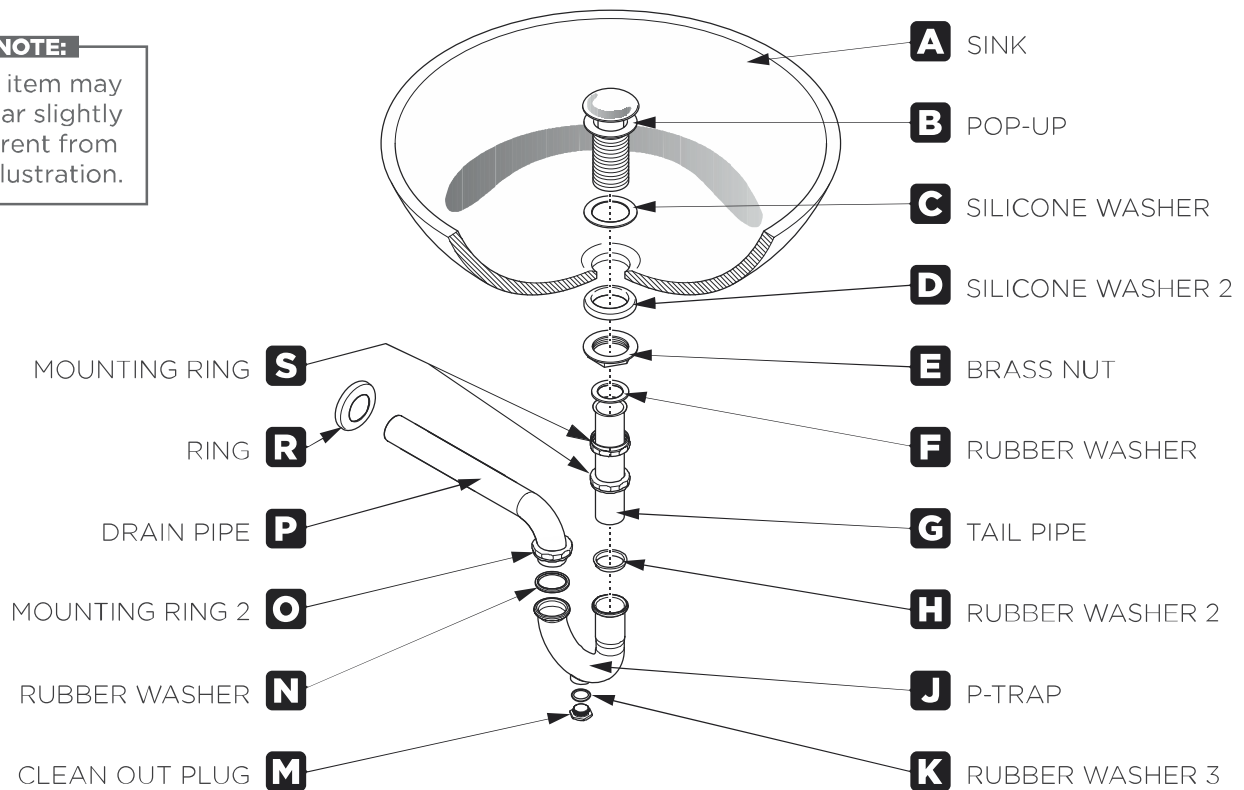
FVN6136-VSL-R LUCERA INSTALLATION GUIDE



P-TRAP AND POP-UP INSTALLATION INSTRUCTIONS

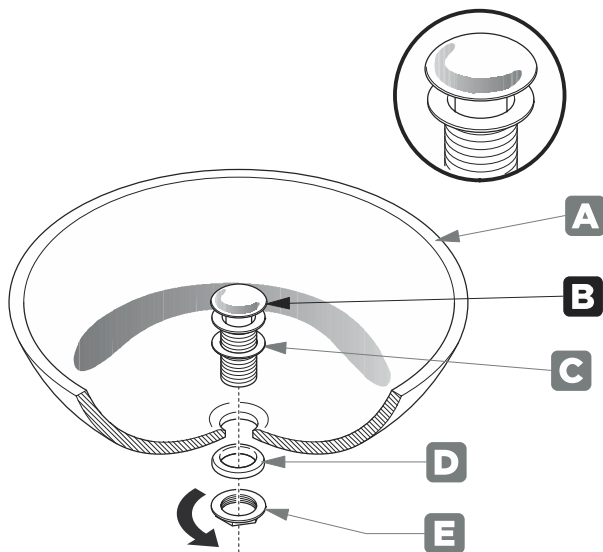
NOTE:

Your item may appear slightly different from the illustration.



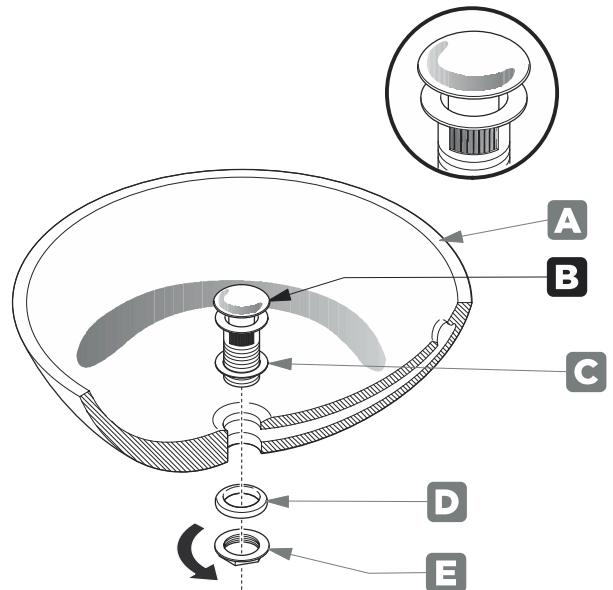
POP-UP INSTALLATION INSTRUCTIONS

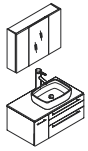
FOR SINKS WITHOUT OVERFLOW



OR

FOR SINKS WITH OVERFLOW





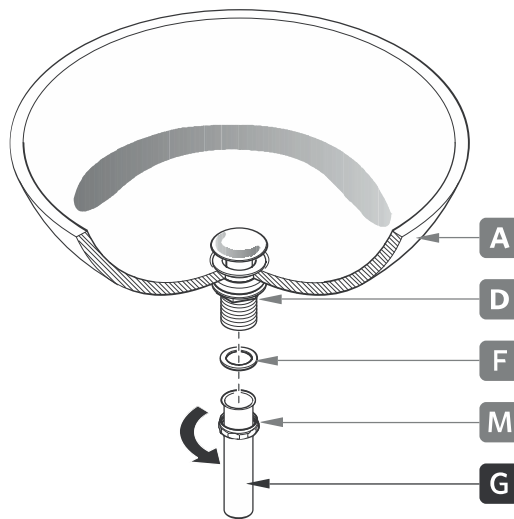
FVN6136-VSL-R LUCERA INSTALLATION GUIDE



P-TRAP INSTALLATION

1

Install a tail pipe (G).



2

Connect a P-trap (J).

