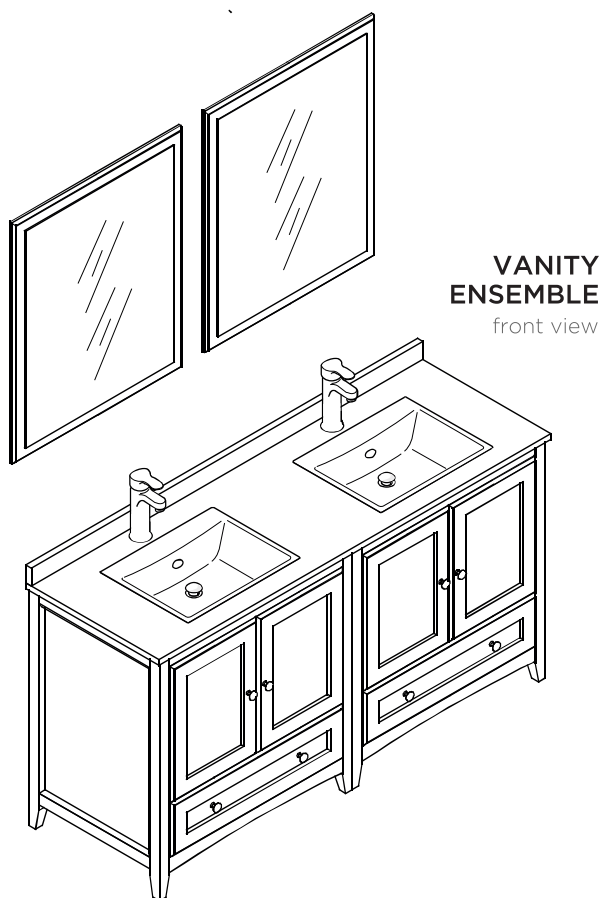


FVN20-3030

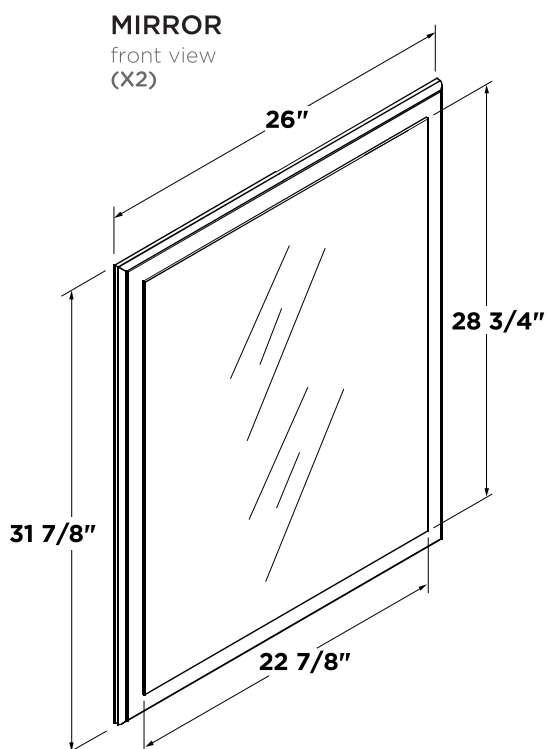
OXFORD

INSTALLATION GUIDE

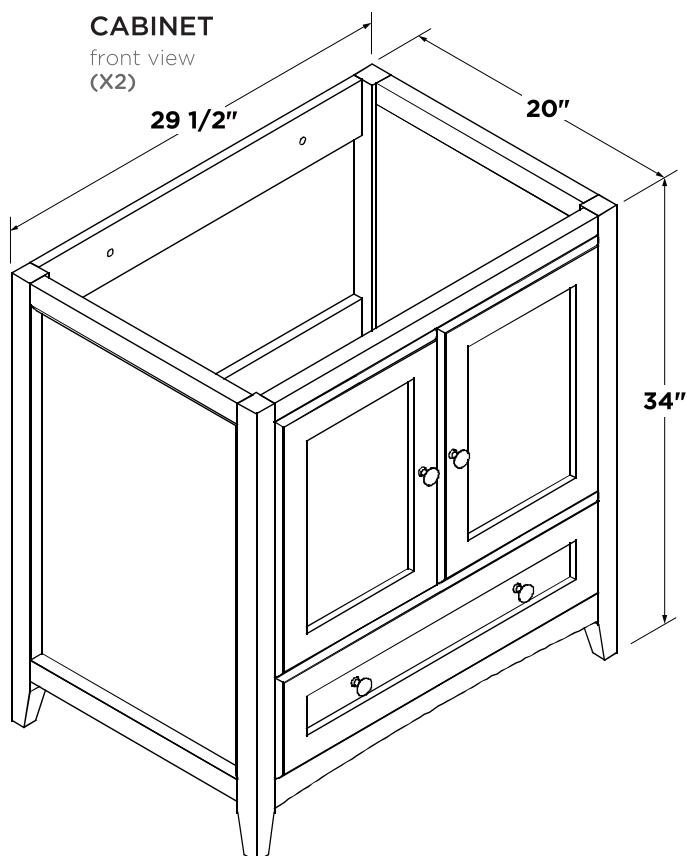
kitchensource.com
1.800.667.8721



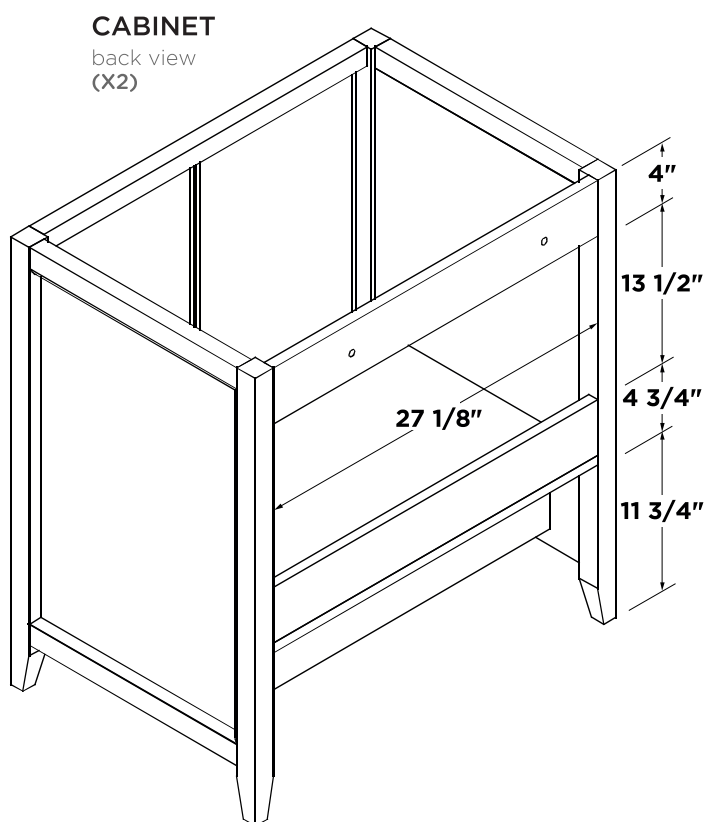
**VANITY
ENSEMBLE**
front view



MIRROR
front view
(X2)

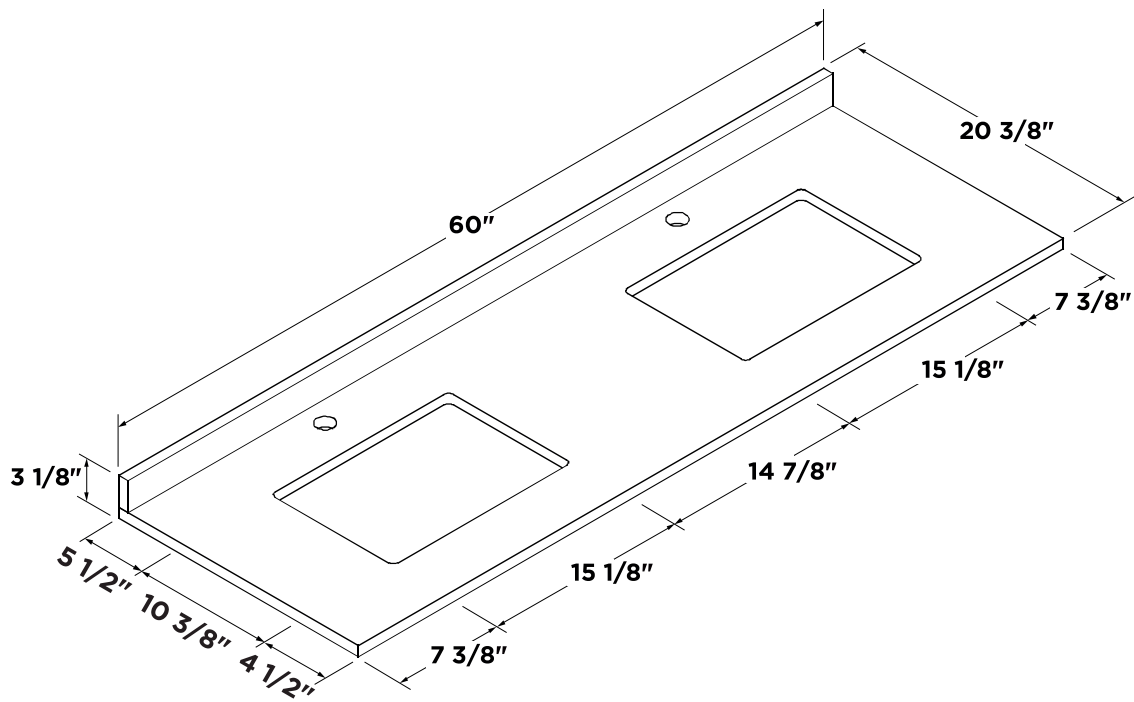


CABINET
front view
(X2)



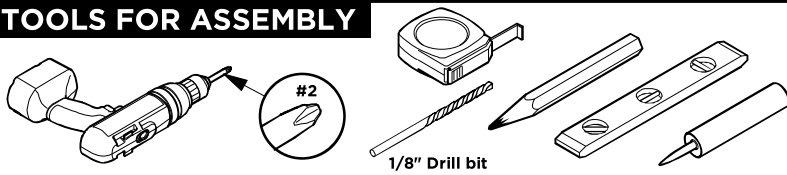
CABINET
back view
(X2)

COUNTER TOP & BACK SPLASH DIMENSIONS



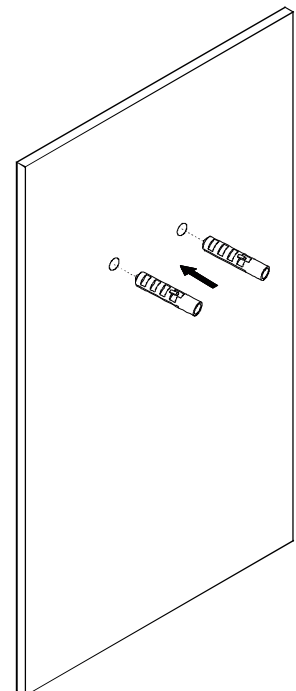
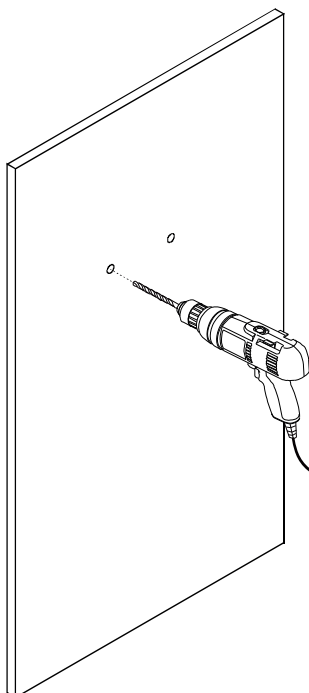
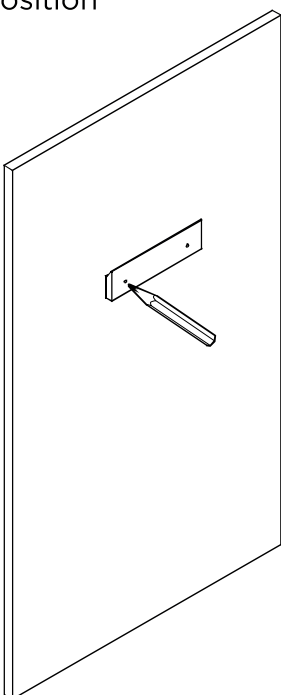
Note: All dimensions and specifications are approximate and subject to change without notice.

TOOLS FOR ASSEMBLY



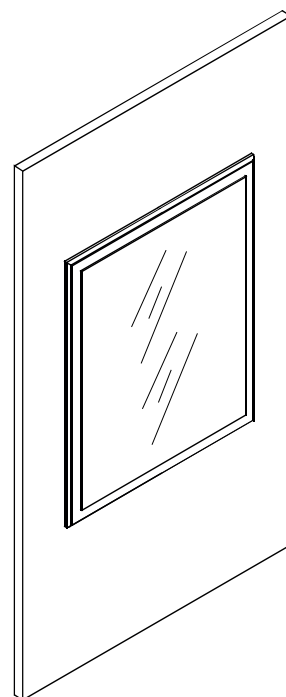
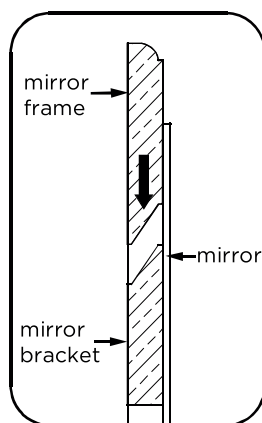
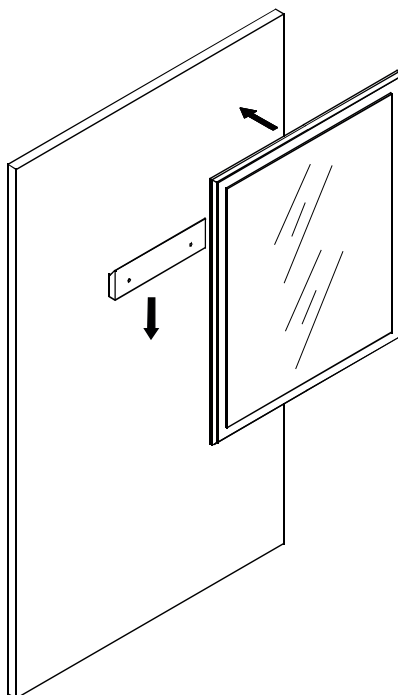
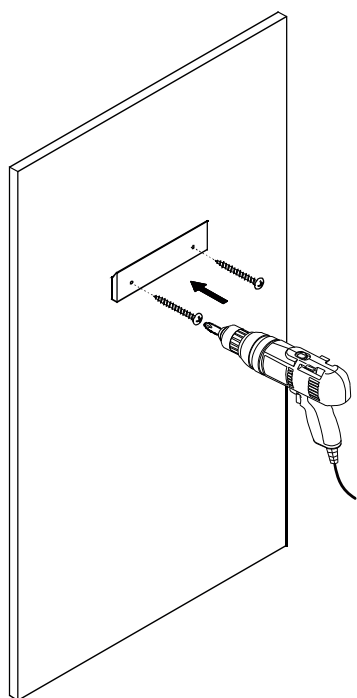
MIRROR INSTALLATION

- 1 Level the mirror bracket and then mark the installation position
- 2 Drill the installation holes
- 3 Insert the plastic plug



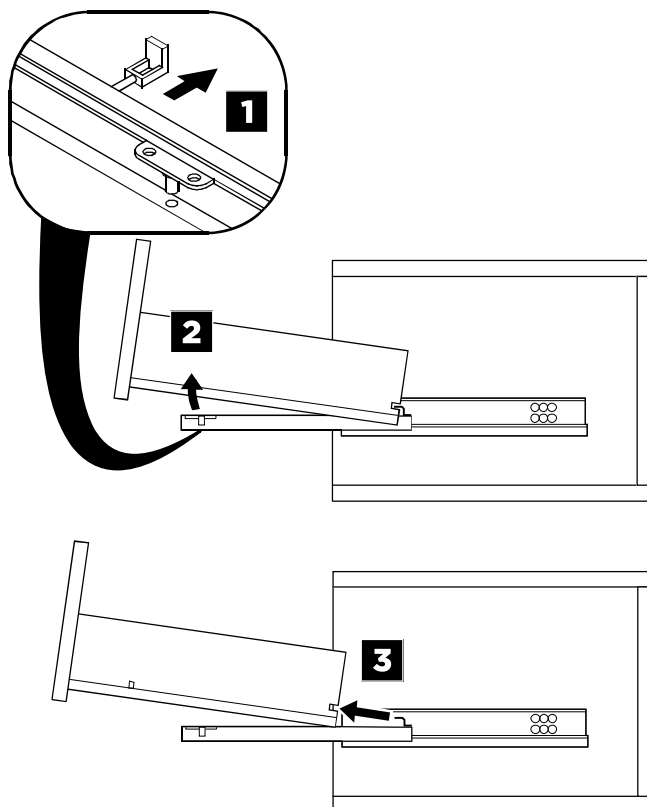
4 Connect the bracket to the mirror with the screws.

5 Hang the mirror on the bracket.

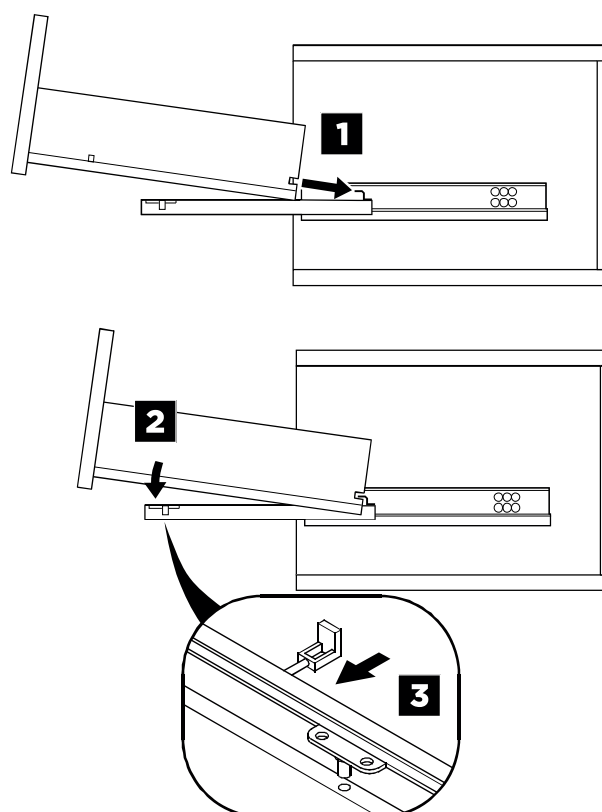


DRAWER REMOVAL & INSTALLATION

REMOVAL

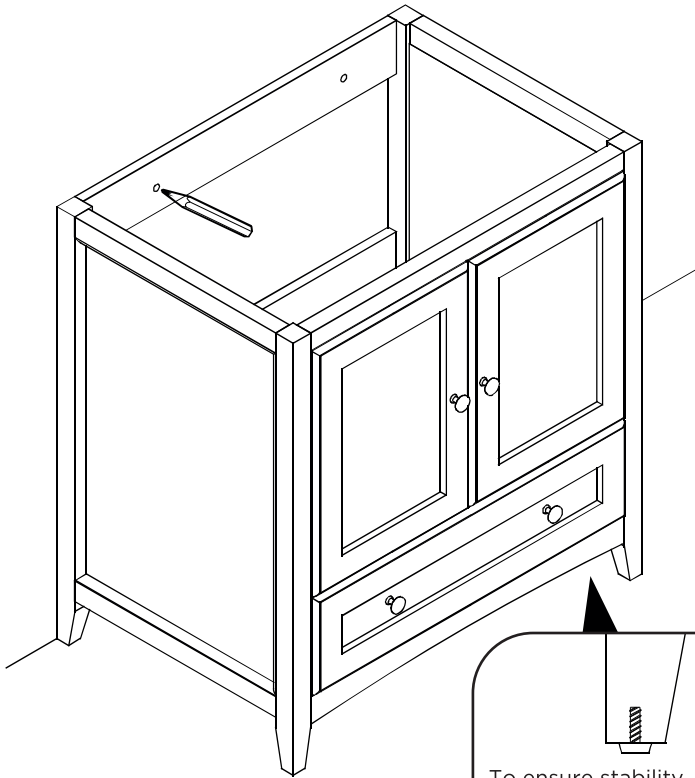


INSTALLATION



1

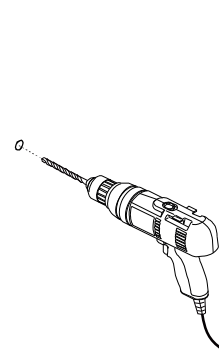
Level the cabinet and mark position for the installation.



To ensure stability, cabinet's height can be regulated by turning the glide clockwise or counterclockwise.
(Optional Step)

2

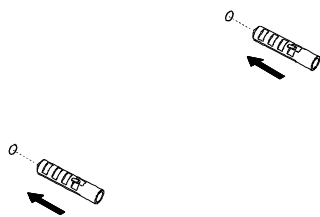
Drill the holes previously marked.



3

*Insert the anchors into the holes

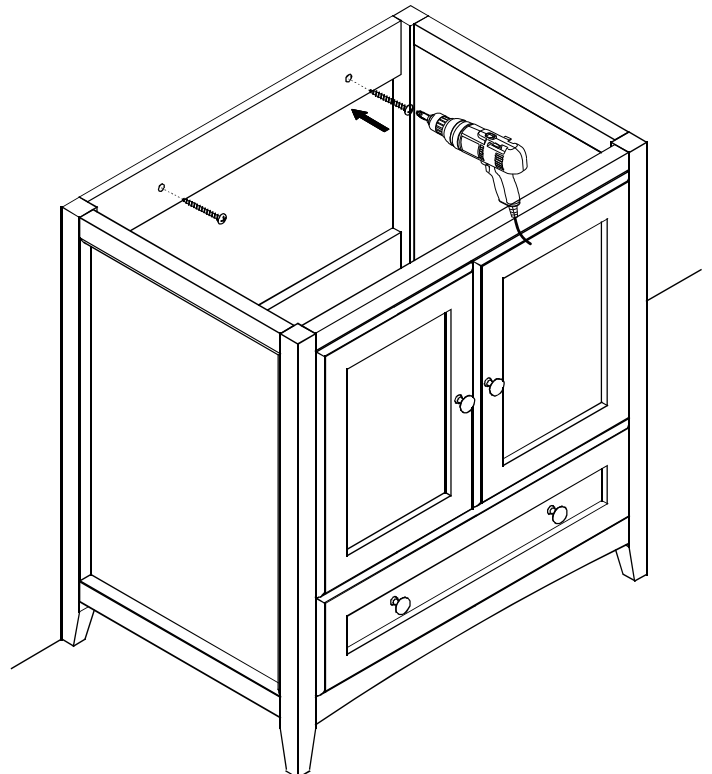
***NOTE:**
Only use anchors if stud is not available.



☞ Consult an expert for the proper screws/bolts to use when attaching to various wall constructions. Screws provided **do not attach** to all wall construction types.

4

*Connect the cabinet to the wall using screws



FVN20-3030

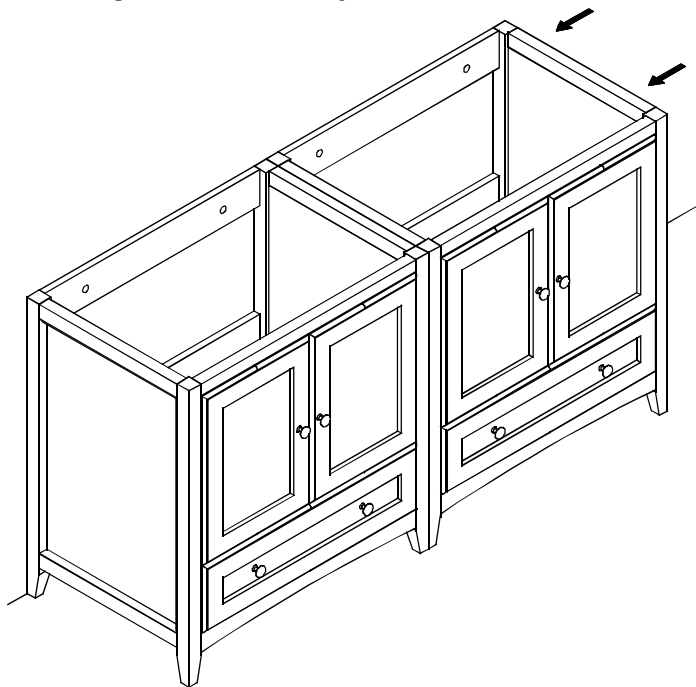
OXFORD

INSTALLATION GUIDE

PAGE 4

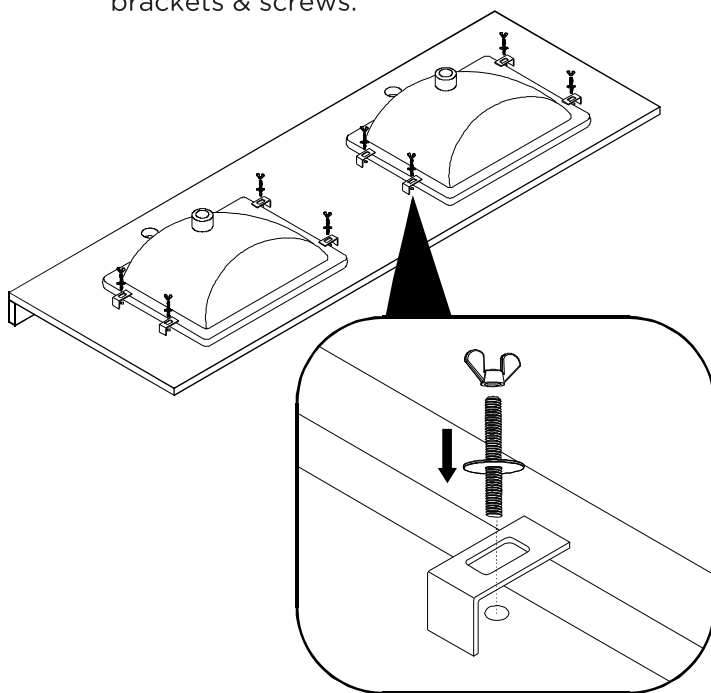
5

Make sure that both cabinets are aligned and securely installed.



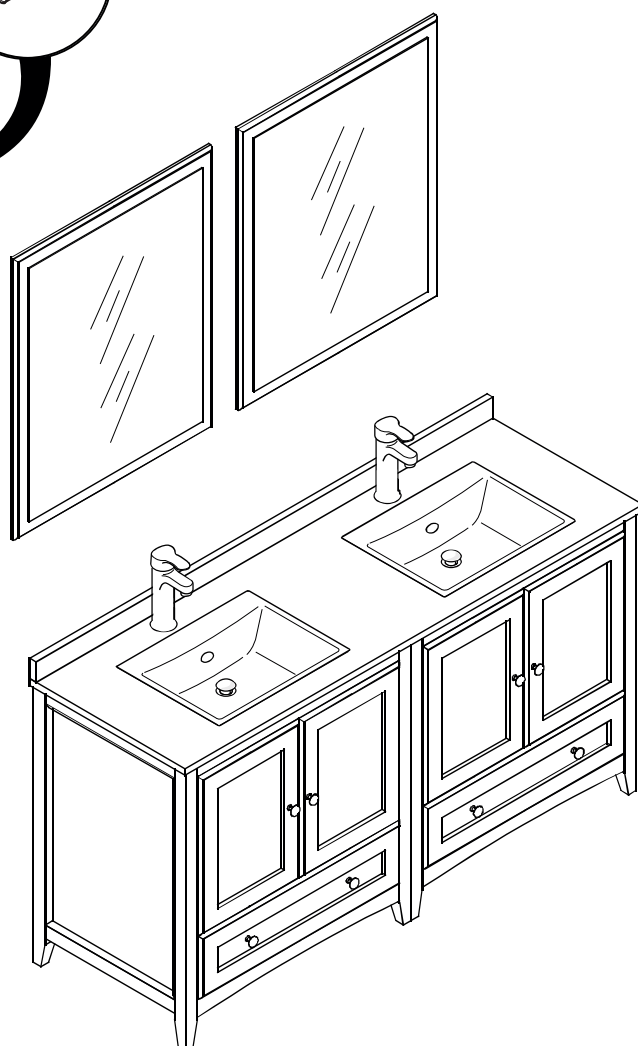
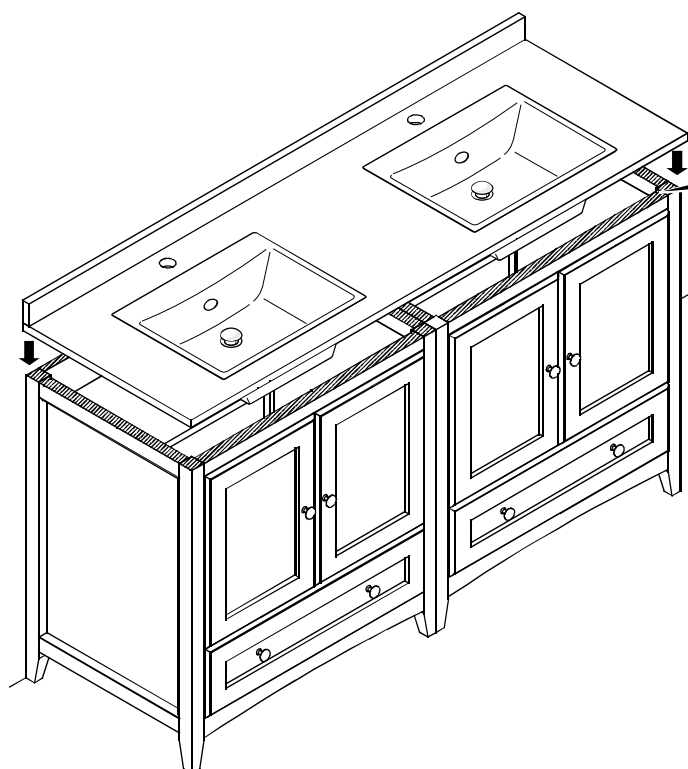
6

Flip the countertop upside down and attach the sink to it using a provided brackets & screws.



7

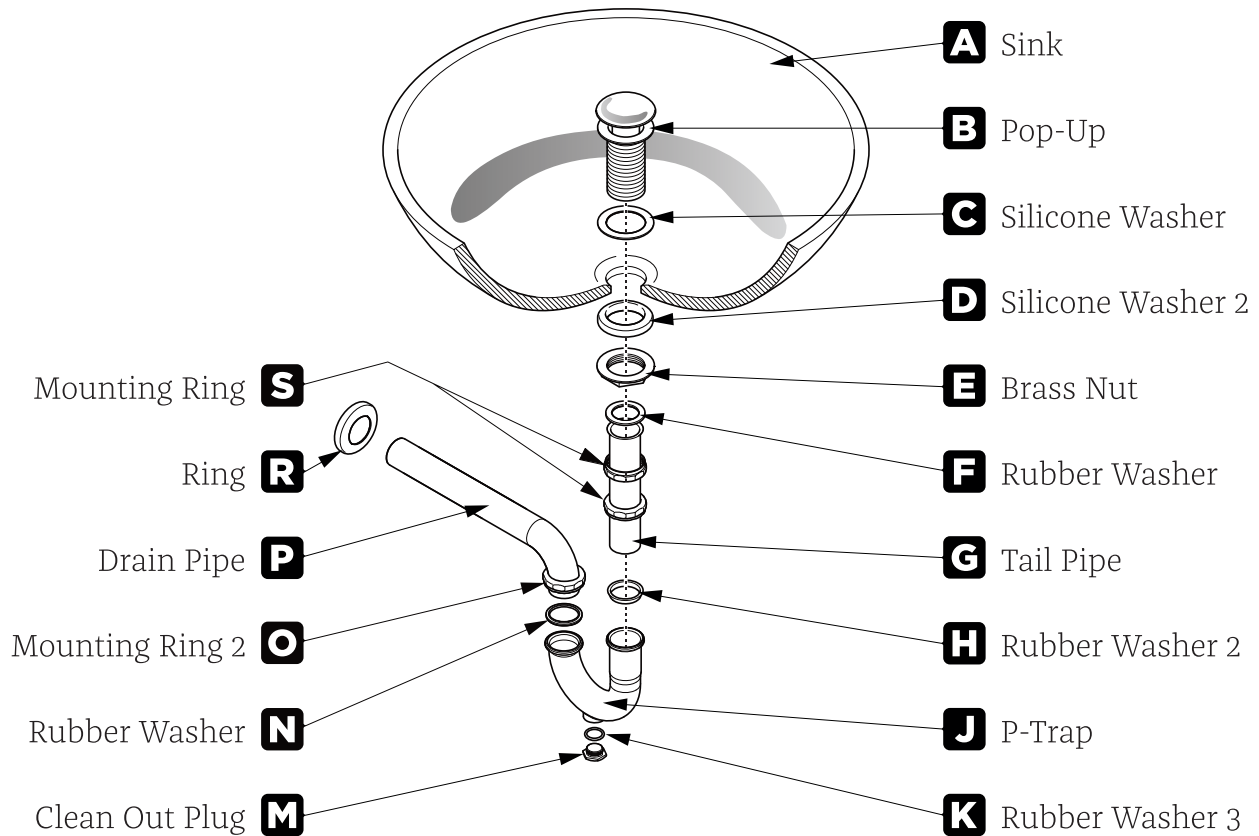
Apply silicone to the top of the cabinet and place the countertop with sink attached on it.



POP-UP & P-TRAP

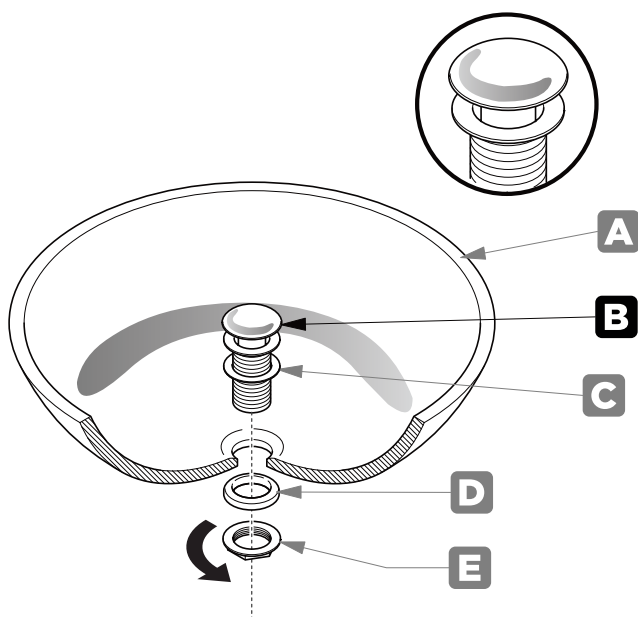
INSTALLATION INSTRUCTIONS

Your item may appear slightly different from the illustration.



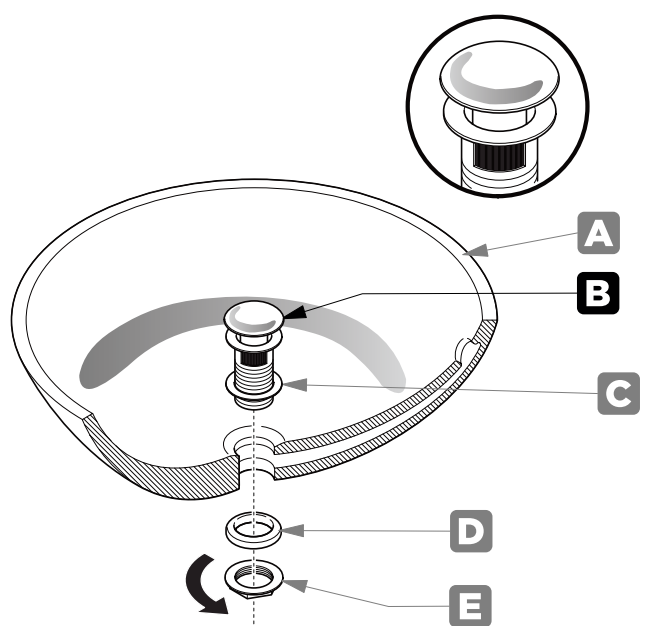
POP-UP INSTALLATION

FOR SINKS WITHOUT OVERFLOW



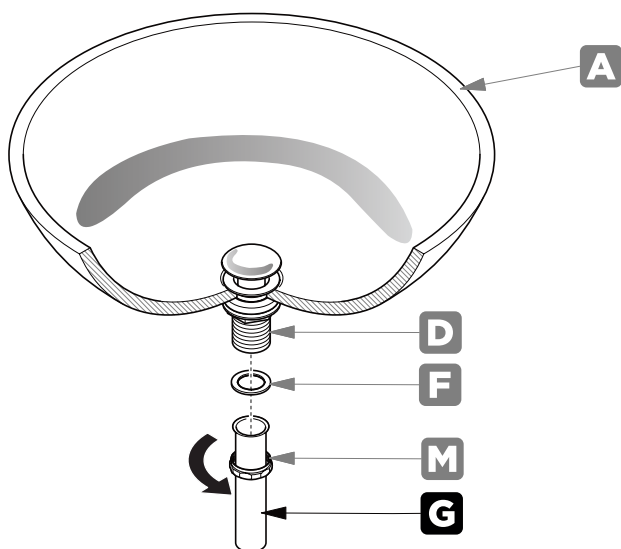
OR

FOR SINKS WITH OVERFLOW

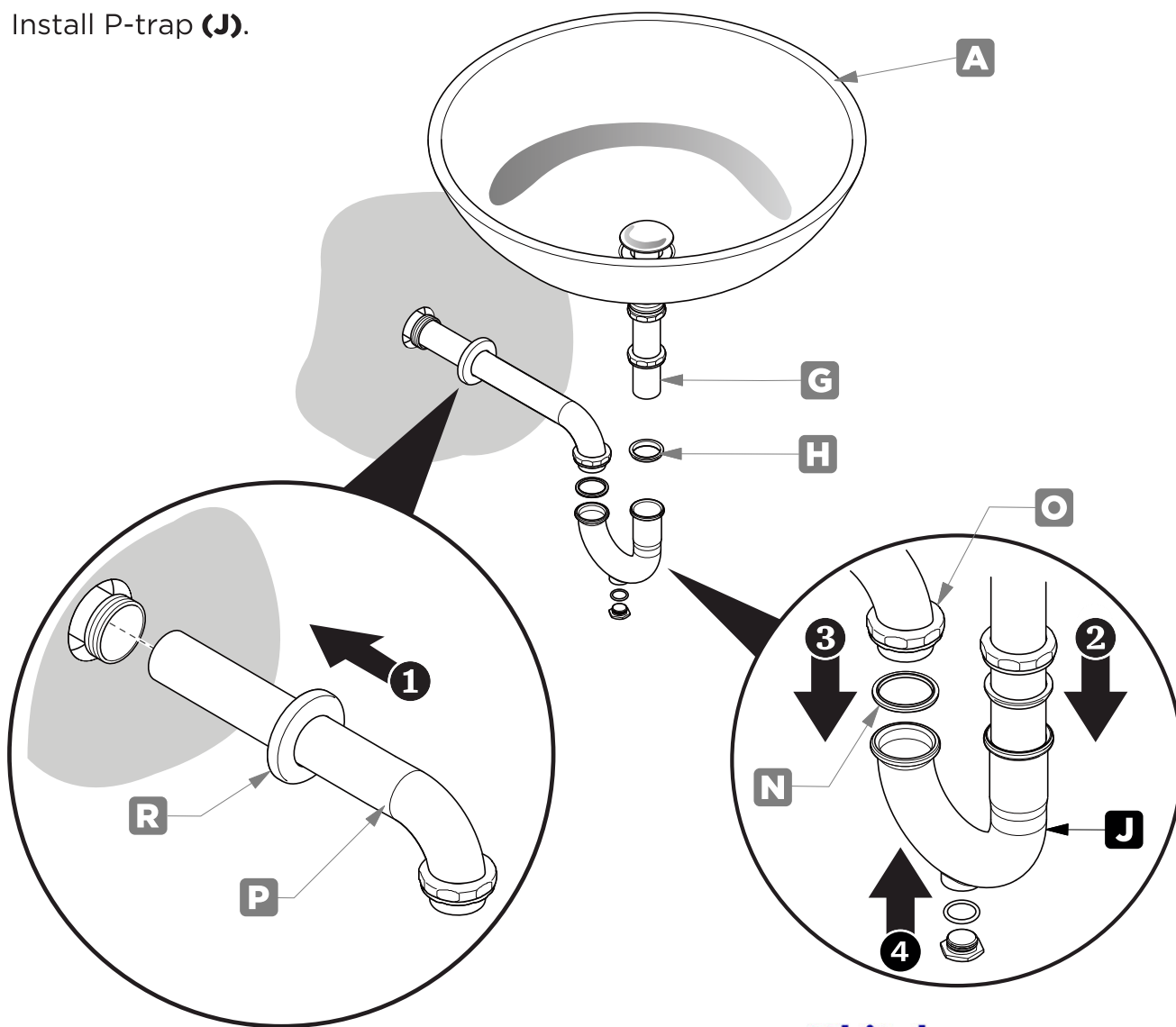


P-TRAP INSTALLATION

1 | Install tail pipe **(G)**.



2 Install P-trap (J).



∴kitchensource.com
☎ 1.800.667.8721