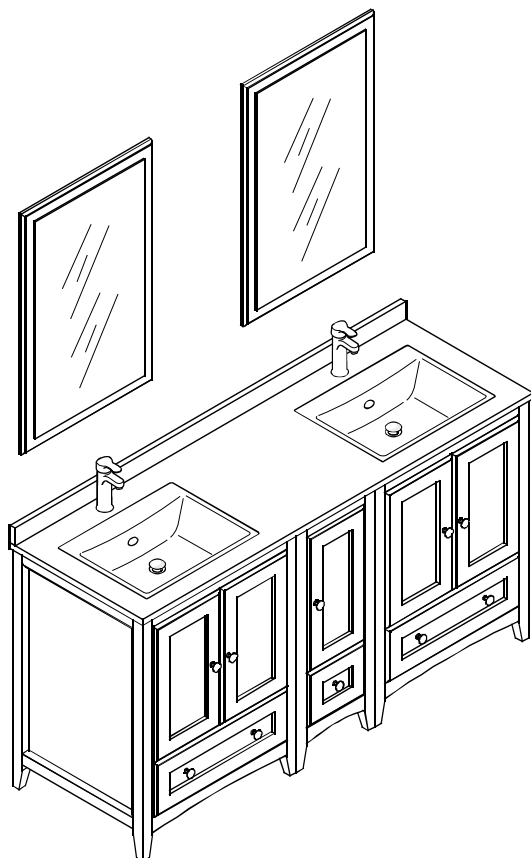


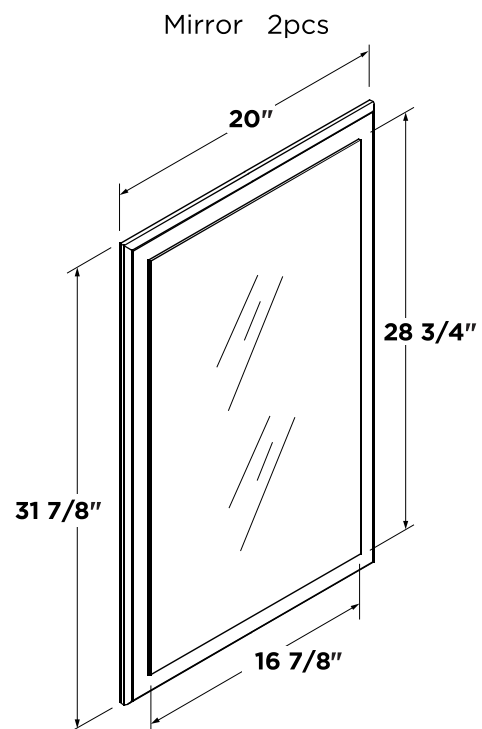
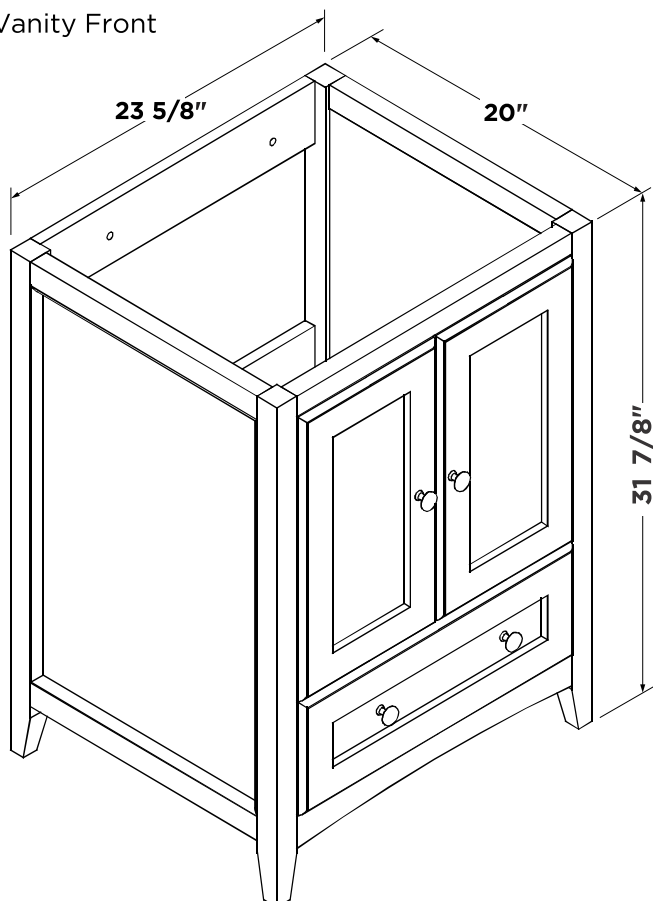
FVN20-241224
OXFORD
INSTALLATION GUIDE

kitchensource.com
1.800.667.8721

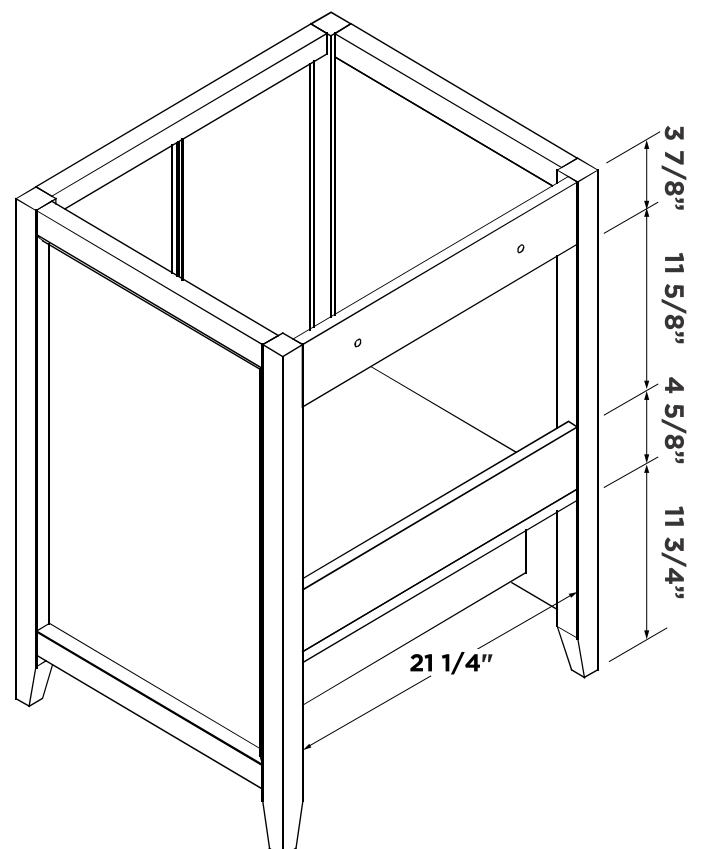
FRESCA®



Vanity 2pcs
Vanity Front

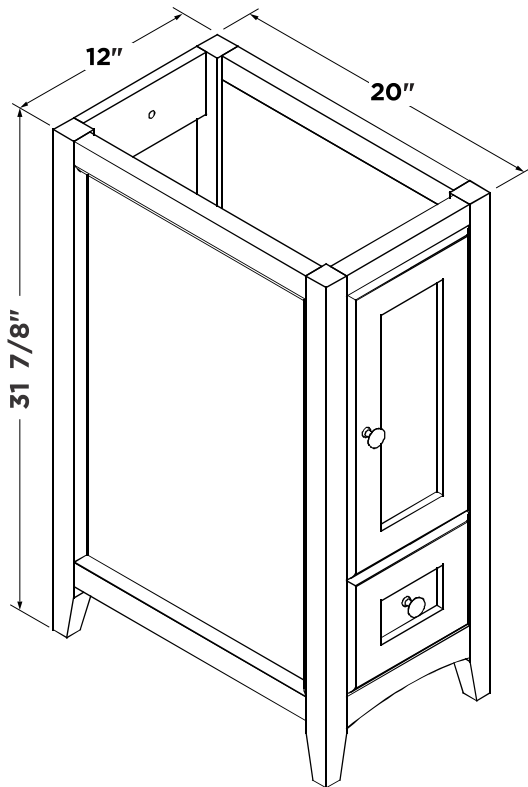


Vanity Back

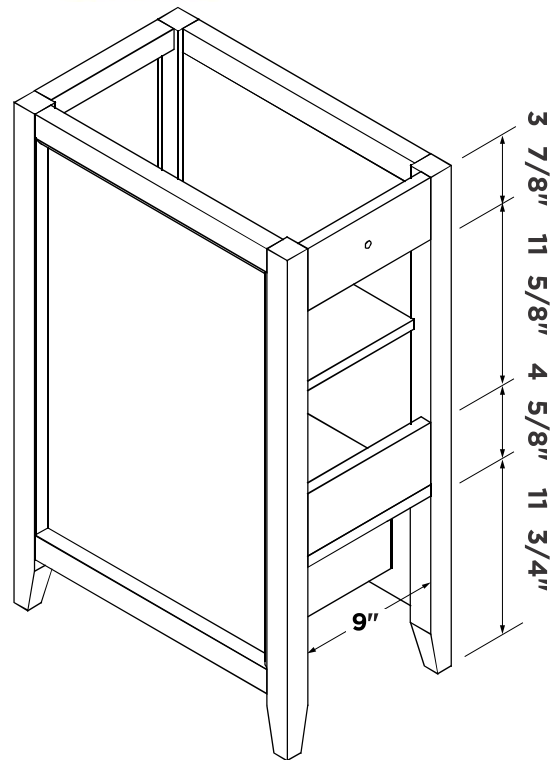


OXFORD INSTALLATION GUIDE

PAGE 1

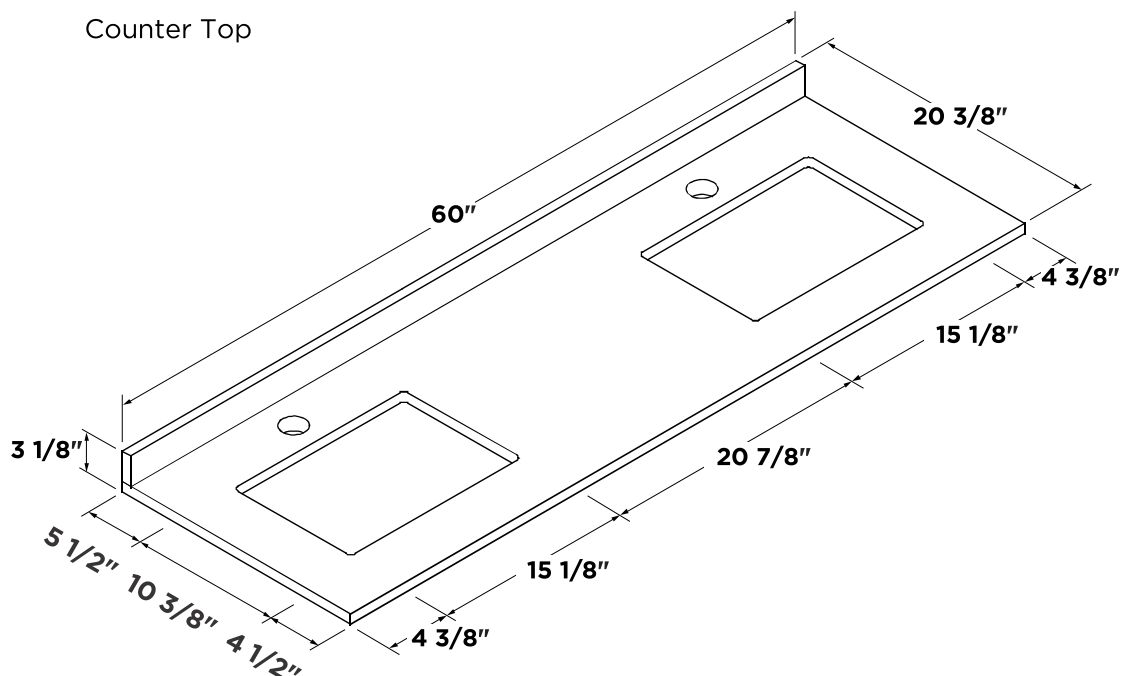


Side Cabinet Front



Side Cabinet Back

Counter Top



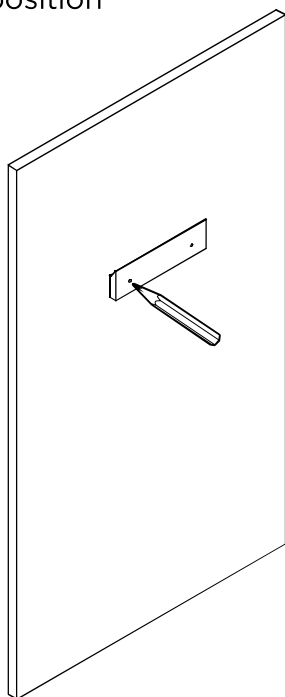
Note: All dimensions and specifications are approximate and subject to change without notice.

TOOLS FOR ASSEMBLY

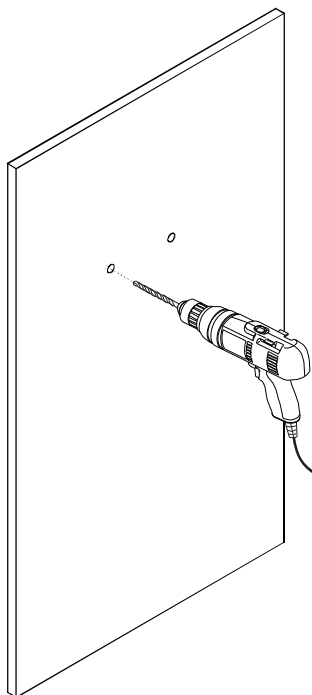


MIRROR INSTALLATION

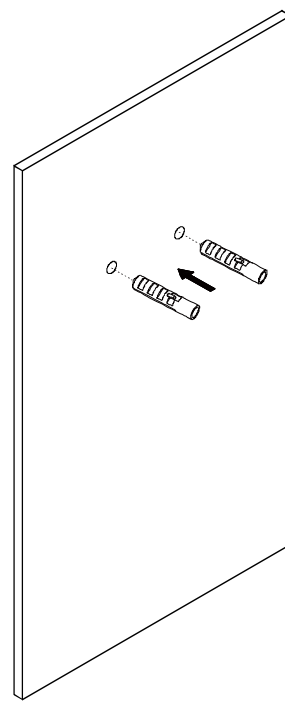
- 1** Level the mirror bracket and then mark the installation position



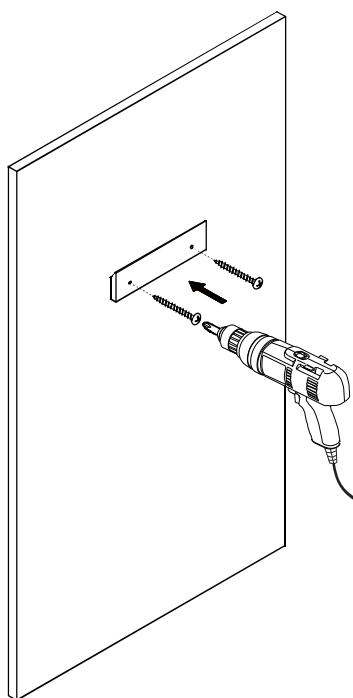
- 2** Drill the installation holes



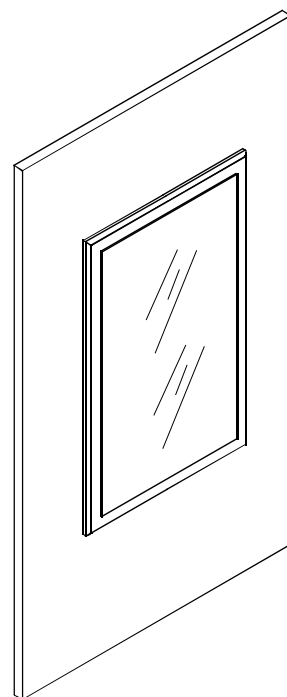
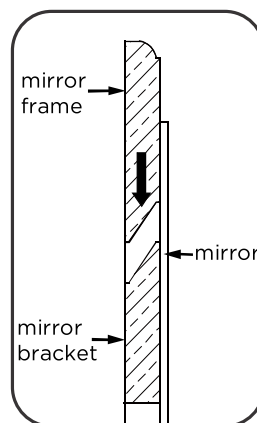
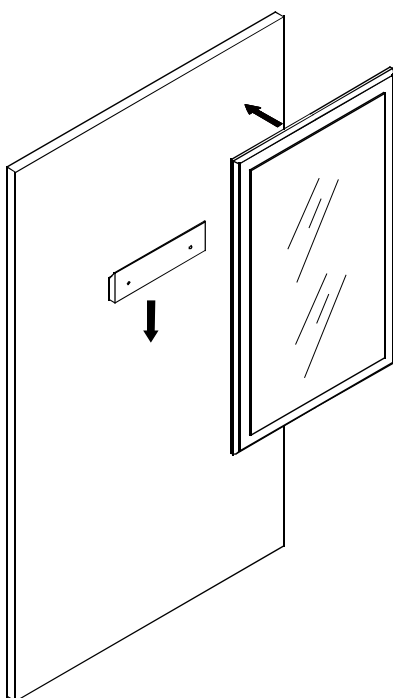
- 3** Insert the plastic plug



- 4** Fix the mirror bracket

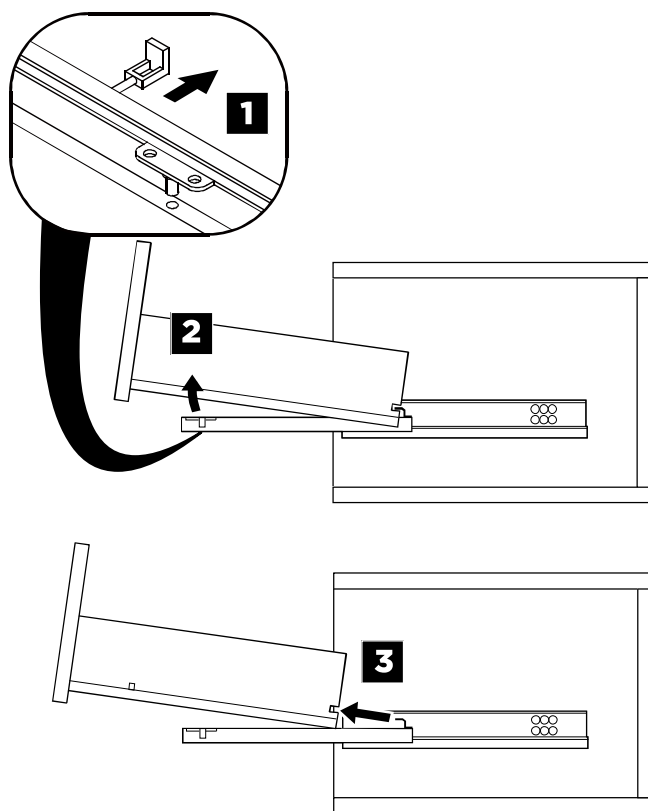


- 5** Hang up the mirror

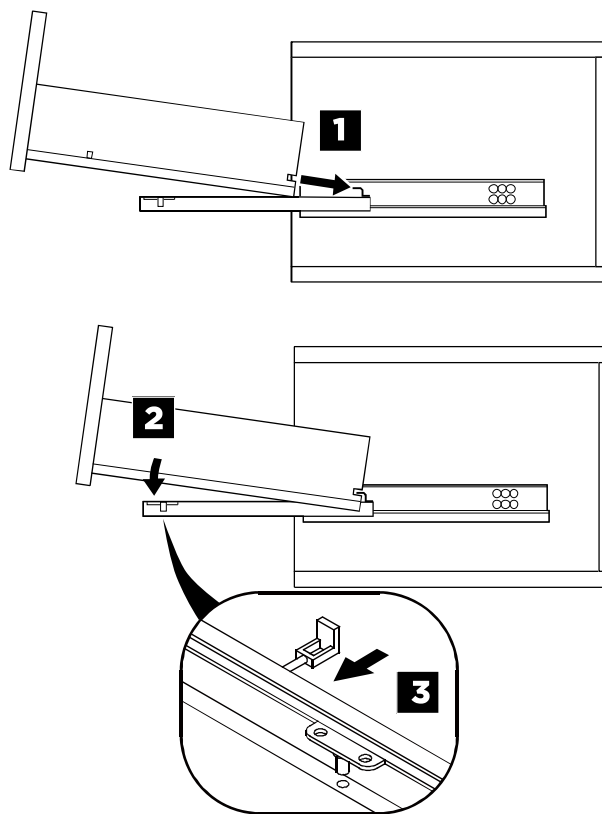


DRAWER REMOVAL & INSTALLATION

REMOVAL

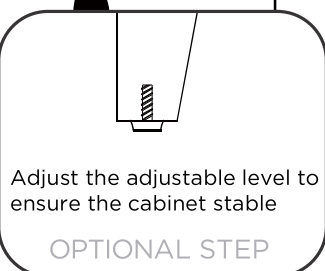
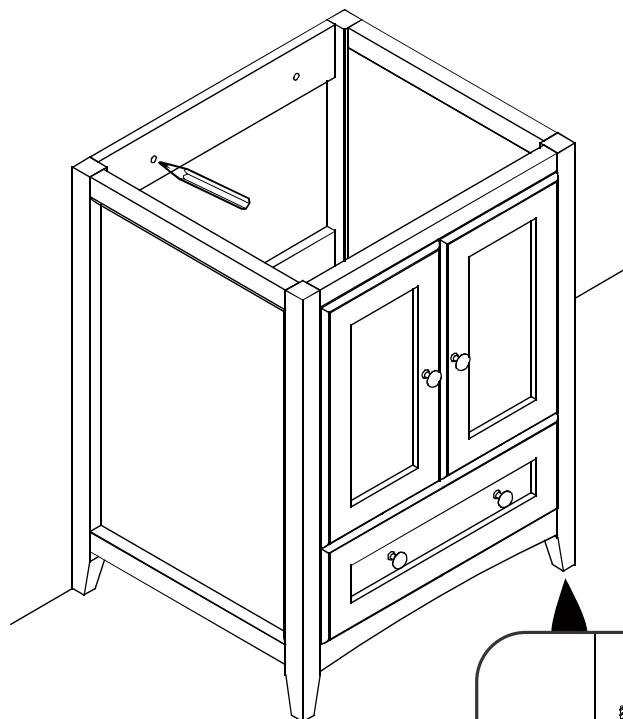


INSTALLATION



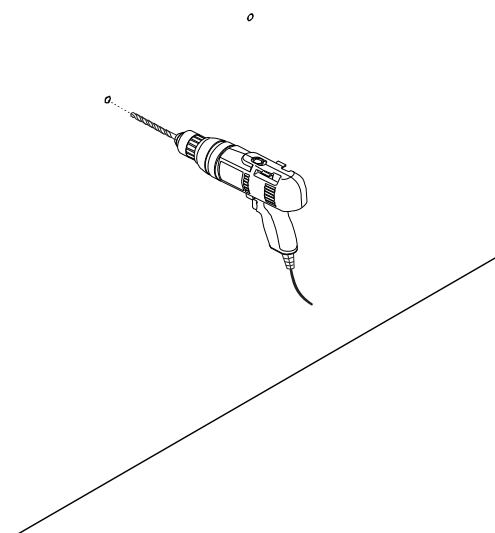
1

Level the cabinet and mark the installation position



2

Drill the installing holes

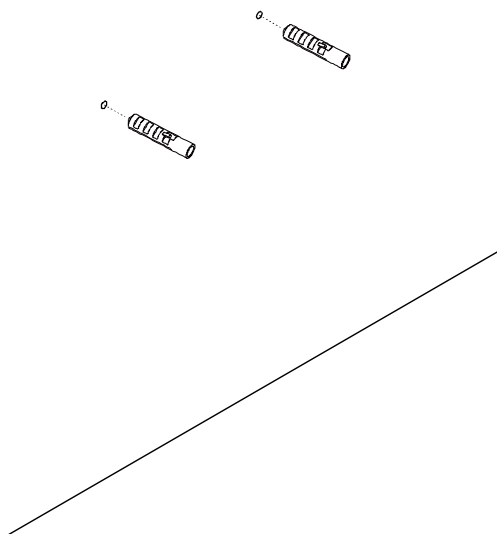


OXFORD INSTALLATION GUIDE

PAGE 4

3

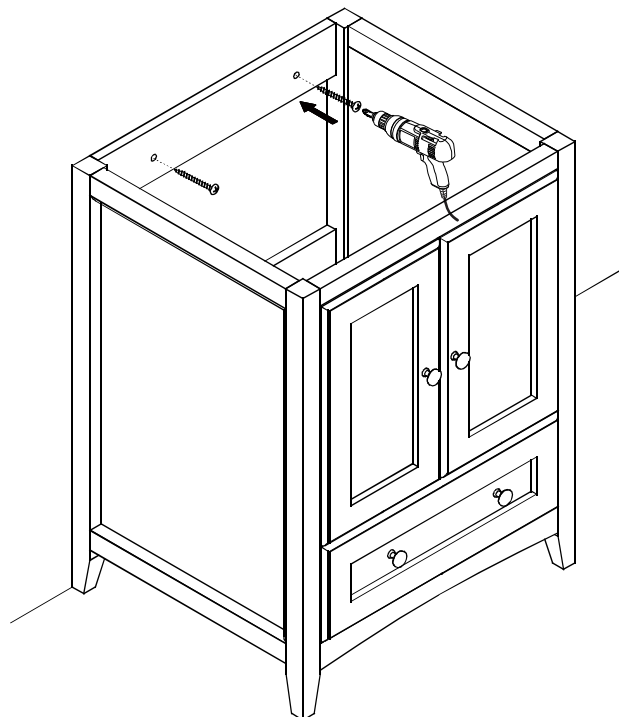
Insert the expansible plastic plugs



4

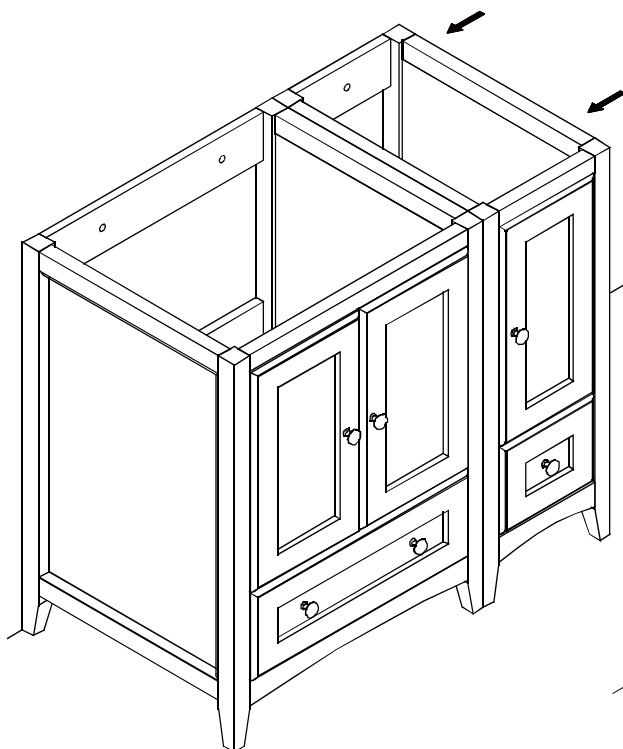
Install cabinet

IMPORTANT: Consult an expert for the proper screws/bolts to use when attaching to various wall constructions. Screws provided do not attach to all wall construction types.



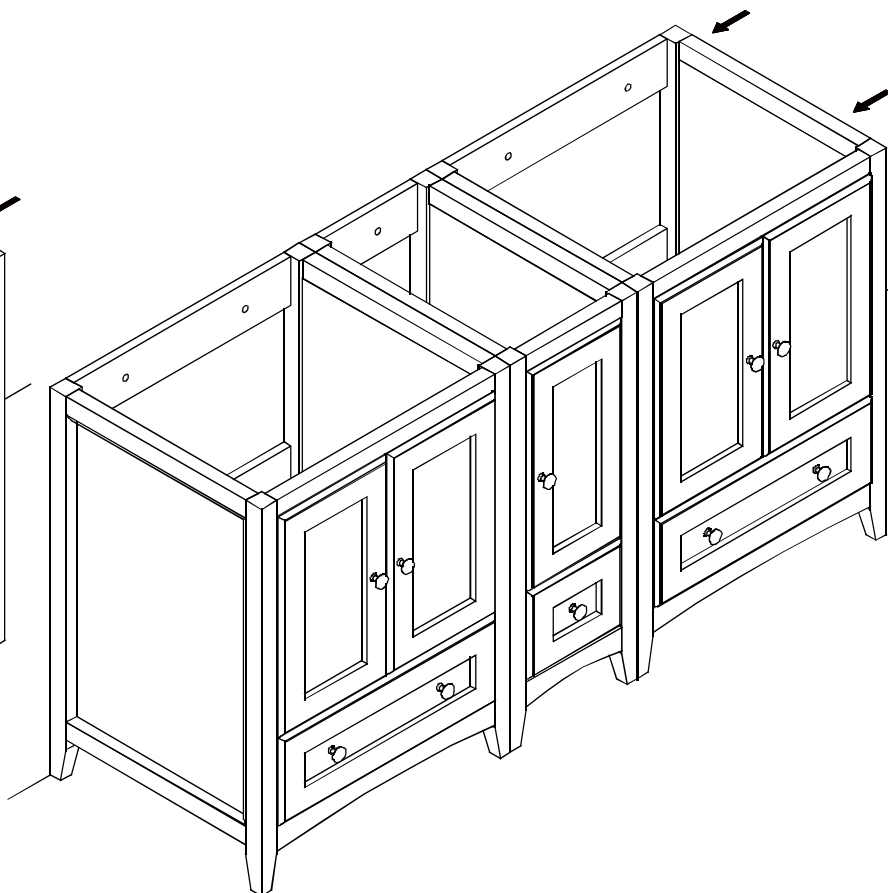
5

Align and level the side cabinet as illustrated shown, then install side cabinet according to master cabinet installation procedure.



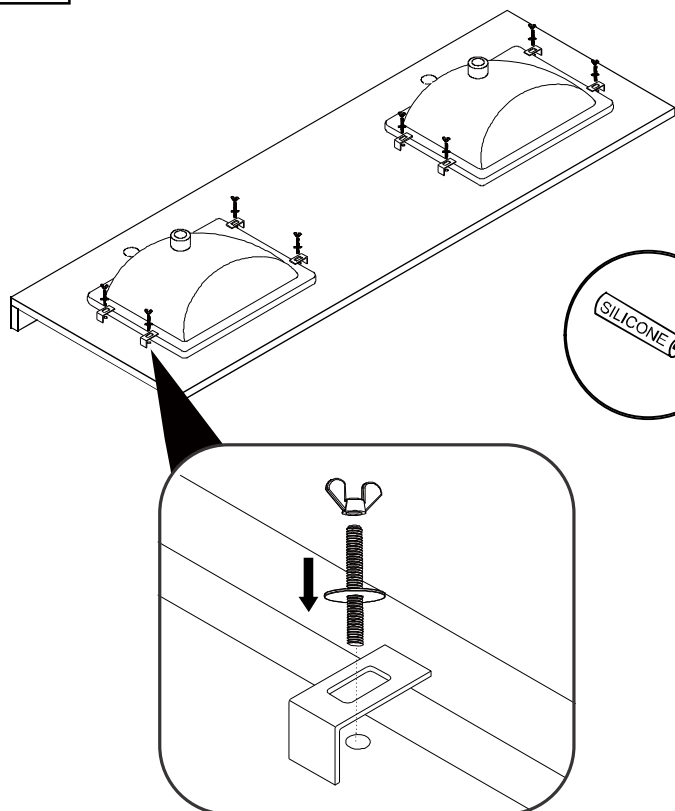
6

Align and level the rest master cabinet as illustrated shown, then repeat the master cabinet installation procedure.



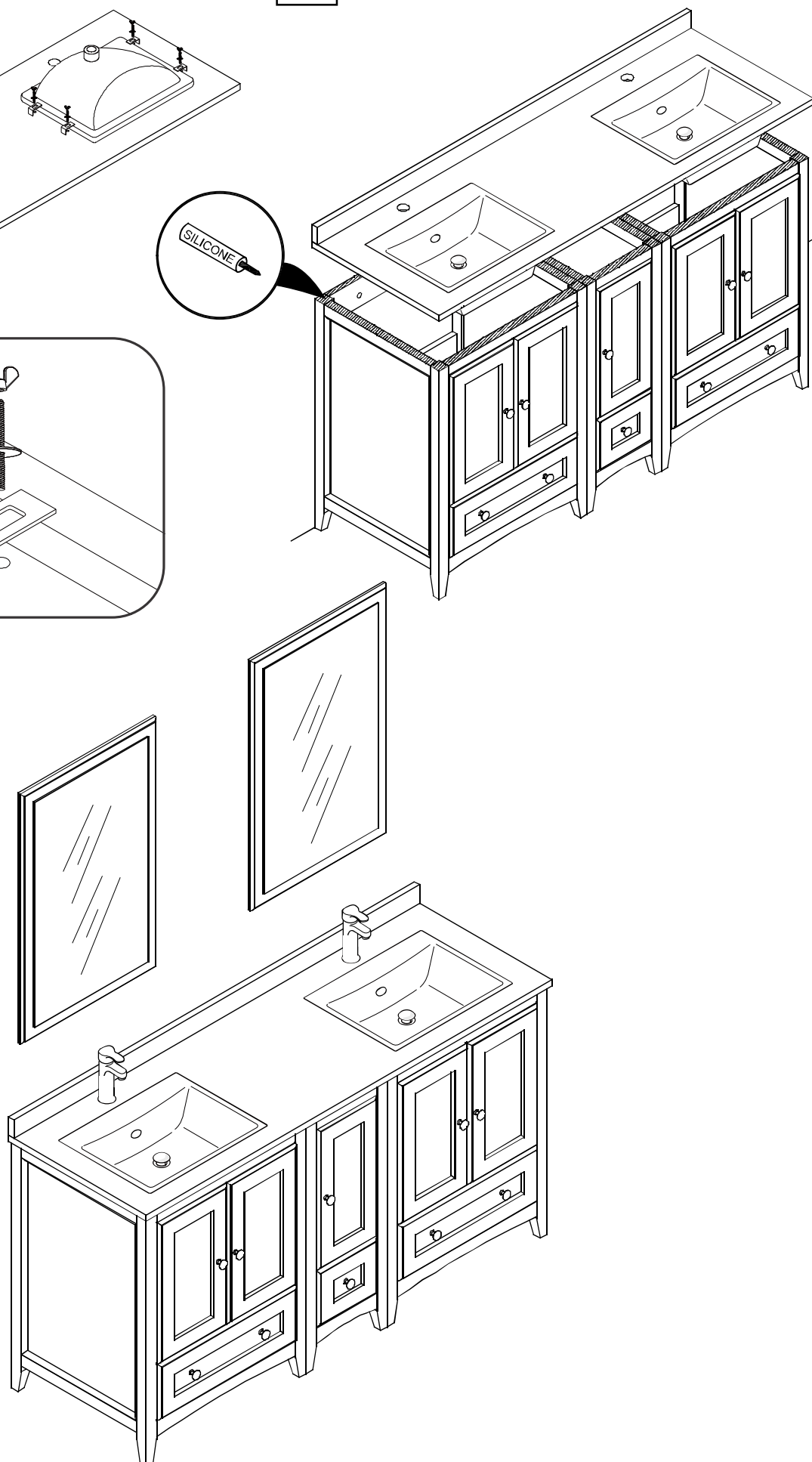
7

Install sink



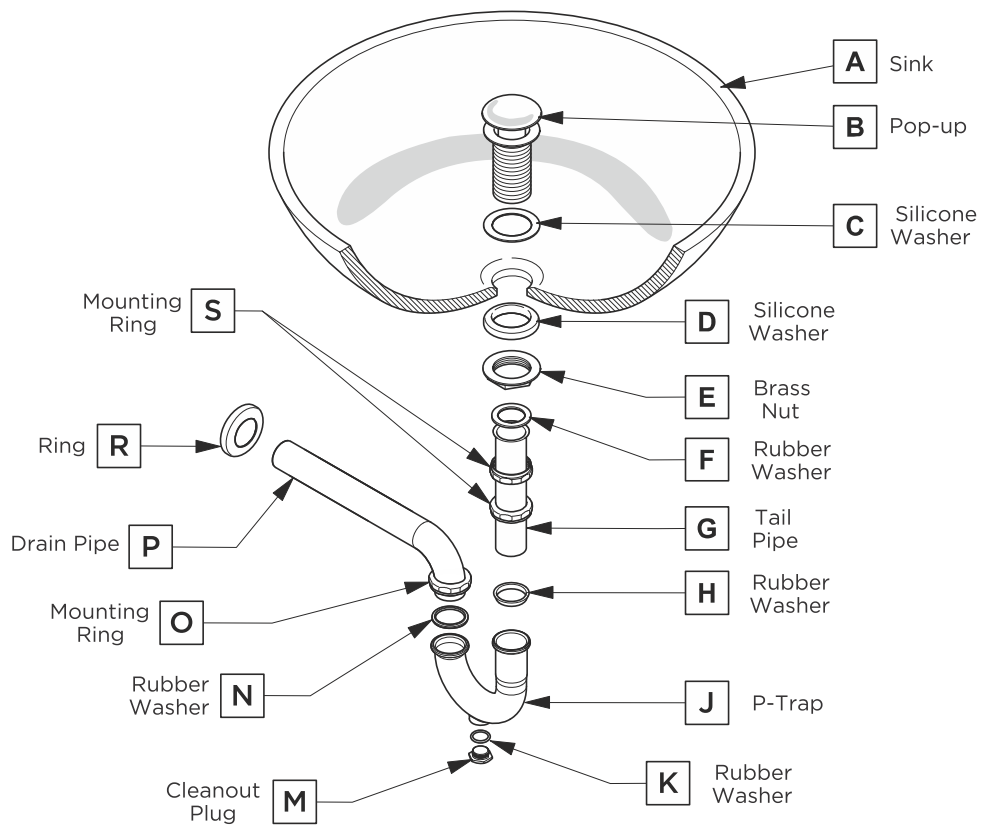
8

Install counter top



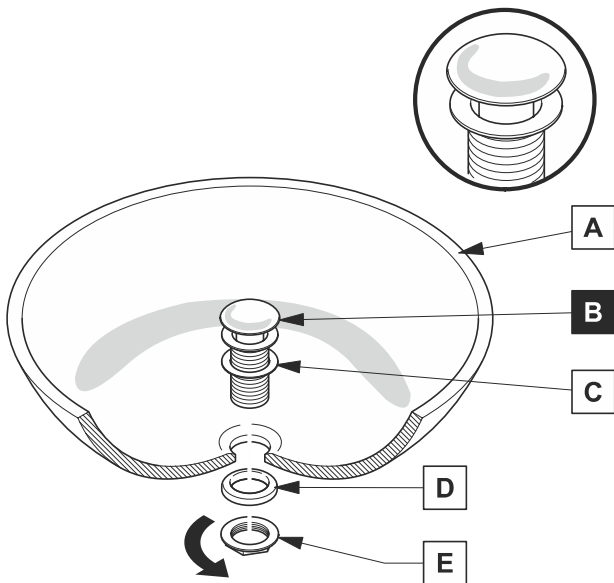
P-TRAP AND POP-UP INSTALLATION INSTRUCTIONS

Your item may appear slightly different from the illustration



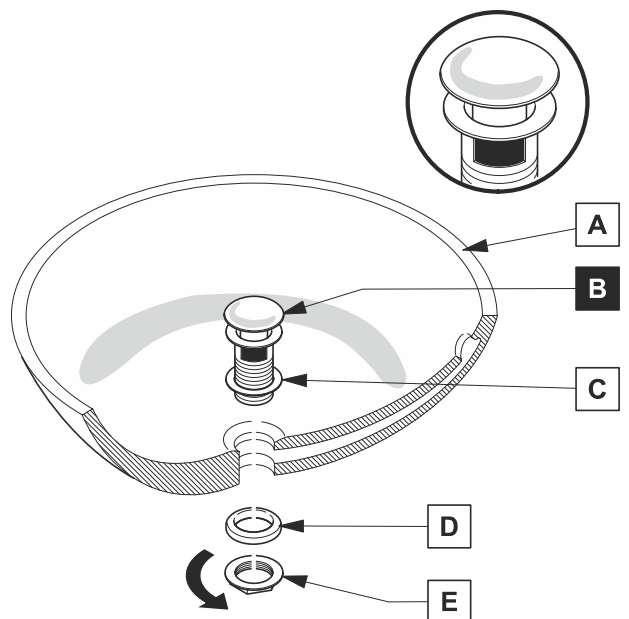
POP-UP INSTALLATION

FOR SINKS WITHOUT OVERFLOW



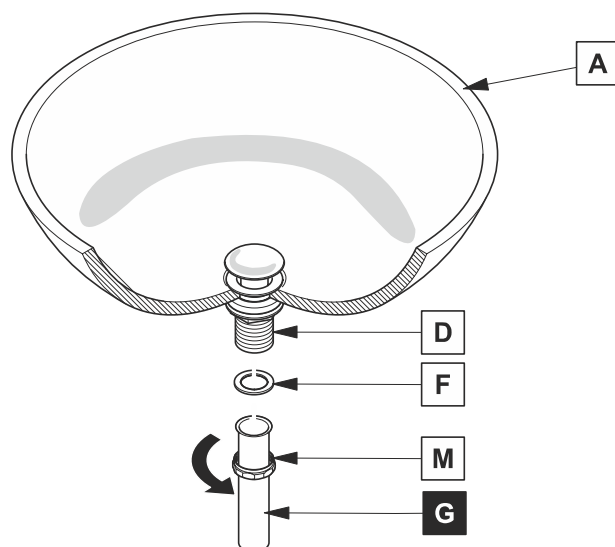
OR

FOR SINKS WITH OVERFLOW



1

Install tail pipe (G)



2

Install p-trap (J)

