



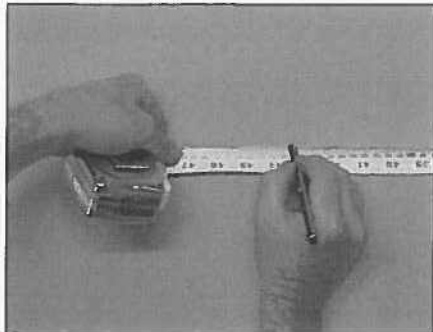
## **INSTALLATION INSTRUCTIONS FOR WALL HUNG VANITIES**

(See detailed instructions on the other side of this page)

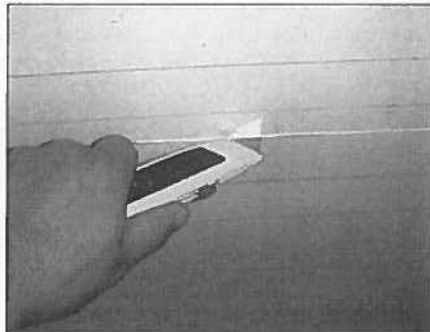
- Our wall hung vanities must be installed by a PROFESSIONAL INSTALLER!
- Our warranty will be voided if the vanity is not installed as per our recommendation.
- We are only responsible for the strength of the mounting hardware provided with this unit.
- We are not responsible for any damage that may arise due to unprofessional installation.
- For solid wall installation, please see step 5-9 on the other side of this page.
- For hollow wall installation, please follow all steps on the other side of this page.



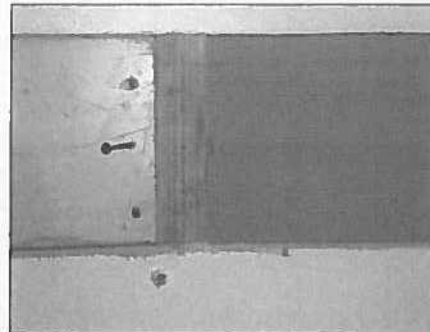
## Instructions for Installing Wall Hung Vanity



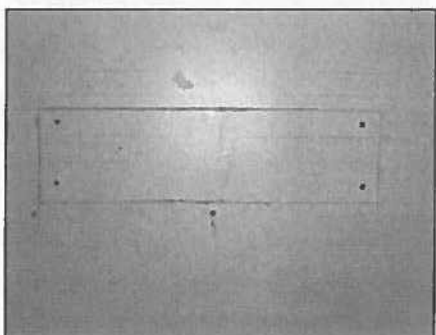
**1.** Locate the place on the wall where you wish to place the hanging bar.



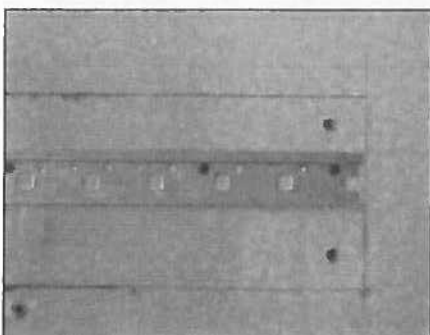
**2.** Cut a rectangular hole in the sheetrock.



**3.** Install a 2 x 8 beam between two (or more) studs, depending on the width of the vanity.



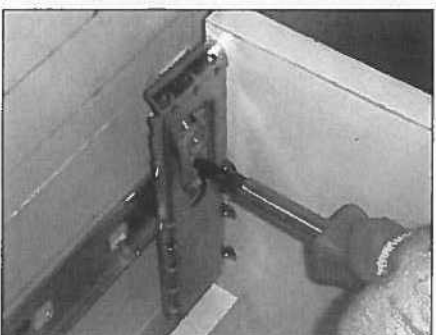
**4.** Cover the hole with sheetrock.



**5.** Screw the aluminum bracket into the studs and reinforcement beam. Make sure the groove is facing up and is level.



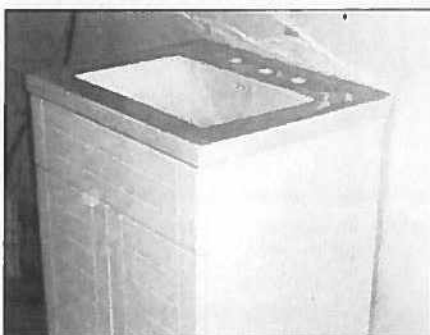
**6.** Hang the cabinet.



**7.** Tighten to wall.



**8.** Level the vanity as shown



**9.** Install countertop.