

Bathtub Drain & Overflow

Before beginning, read the instructions below and follow all local plumbing and building codes.

Unpack and inspect your new drain and overflow for any shipping damages and ensure no pieces are missing.
If any damages are discovered DO NOT INSTALL.

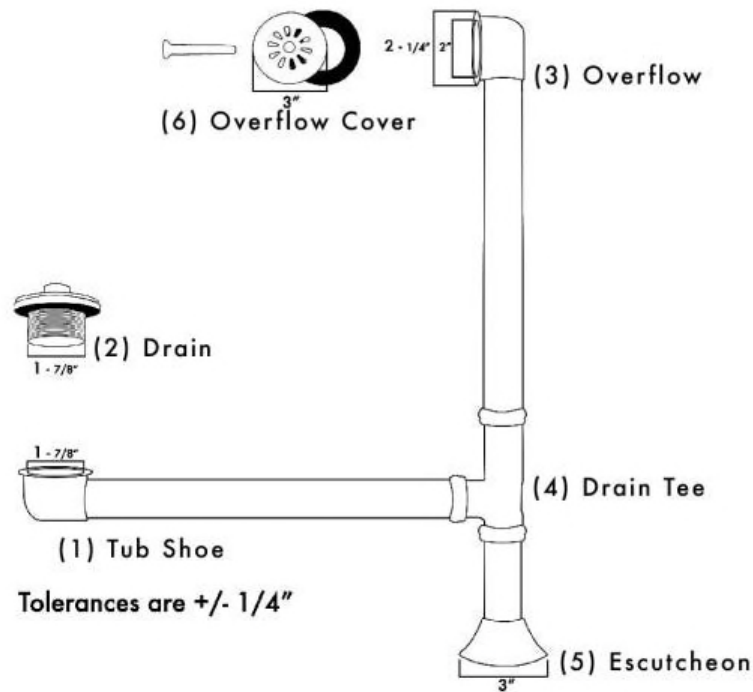
SHUT OFF ALL WATER SUPPLY LINES AT THE TUB WHEN INSTALLING.

Please contact customer service at 1(866)448-Tubs. You may also call our customer service for any other assistance with our products.

TOOLS AND MATERIALS NEEDED :

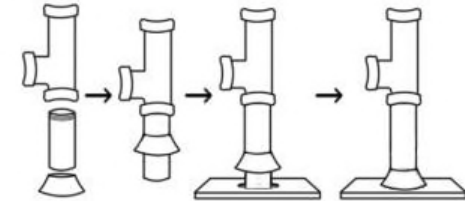
Thread Sealant	Pliers	Pipe Wrench	Hacksaw	Screwdriver	Adjustable Wrench
----------------	--------	-------------	---------	-------------	-------------------

Because tubs can vary in size, measure your working space thoroughly before installation. Trim pipes accordingly to ensure a correct fit.

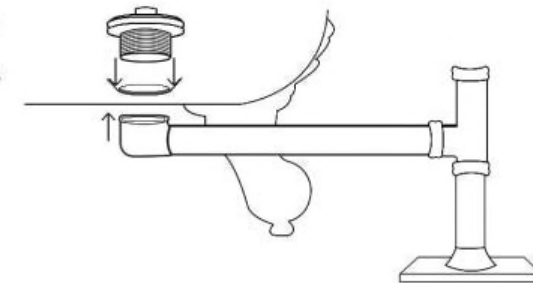


Its always advised to place plumber's tape onto any threads during any plumbing installation.

1. Locate the drain tee (4), threaded pipe (7), and escutcheon (5). Thread the pipe into the shorter end of the drain tee. Place the escutcheon on the threaded pipe. Attach the end of the threaded pipe into the drain hole in the bathroom floor.

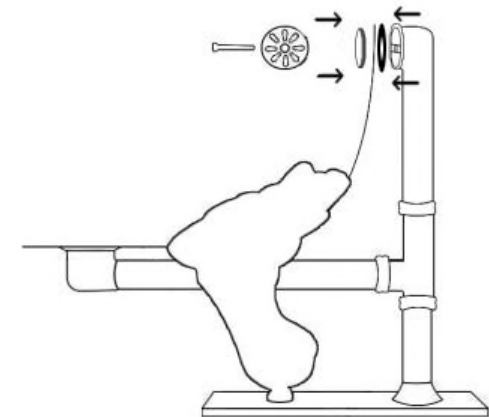


2. Place the end of the tub shoe (1) into the side of the drain tee. Line the hole of the tub shoe flush with the drain of the tub and tighten the connection of the tub shoe at the drain tee. Simply twist right until its secure but still flush with the drain.



3. Thread the drain (2) through the drain hole in the tub, connecting the drain and the tub shoe.

4. Next, place the overflow (3) into the top connection of the drain tee. Make the hole at the end of the overflow even with the overflow hole in the tub, then tighten the connection at the drain tee but still flush with at the overflow.



5. To finish off, take the overflow cover, the only bolt provided, and the uneven black washer and place them centered over the overflow hole in the tub. Thread the bolt through the center of the over flow cover then through the hole in the center of the drain pipe to secure them both together.