



ADVANCING  
VENTILATION®

**JencoFan**



# Losone Select Series

## Inline/Cabinet Ventilators



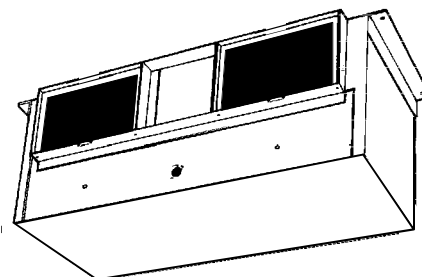
## Installation, Operation and Maintenance Manual

### Model: L2000L

#### **READ AND SAVE THESE INSTRUCTIONS**

The purpose of this manual is to aid in the proper installation and operation of fans manufactured by S&P USA. These instructions are intended to supplement good general practices and are not intended to cover detailed instruction procedures, because of the wide variety and types of fans manufactured by S&P USA.

## IN-LINE CABINET VENTILATORS



# READ AND SAVE THESE INSTRUCTIONS

## WARNING

TO REDUCE THE RISK OF FIRE, ELECTRIC SHOCK, OR INJURY TO PERSONS, OBSERVE THE FOLLOWING:

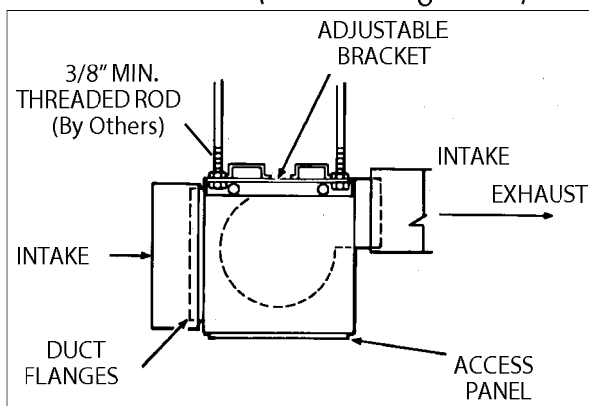
1. Use this unit only in the manner intended by the manufacturer. If you have questions, contact the manufacturer at the address or telephone number listed in the warranty.
2. Before servicing or cleaning unit, switch power off at service panel and lock the service disconnecting means to prevent power from being switched on accidentally. When the service disconnecting means cannot be locked, securely fasten a prominent warning device, such as a tag, to the service panel.
3. Installation work and electrical wiring must be done by a qualified person(s) in accordance with all applicable codes and standards, including fire-rated construction codes and standards.
4. Sufficient air is needed for proper combustion and exhausting of gases through the flue (chimney) of fuel burning equipment to prevent backdrafting. Follow the heating equipment manufacturer's guideline and safety standards such as those published by the National Fire Protection Association (NFPA), and the American Society for Heating, Refrigeration and Air Conditioning Engineers (ASHRAE), and the local code authorities.
5. When cutting or drilling into wall or ceiling, do not damage electrical wiring and other hidden utilities.
6. Ducted fans must always be vented to the outdoors.
7. This unit must be grounded.

## CAUTION

1. For general ventilating use only. Do not use to exhaust hazardous or explosive materials and vapors.
2. To avoid motor bearing damage and noisy and/or unbalanced impellers, keep drywall spray, construction dust, etc. off power unit.
3. Please read specification label on product for further information and requirements.

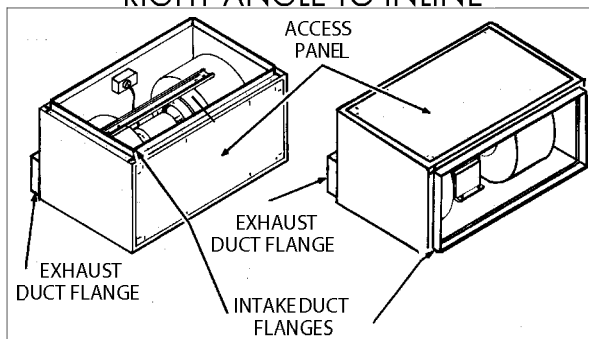
## PLAN INSTALLATION

### MOUNTING (In-line Configuration)



*Converted for in-line applications.*

### CONVERTING FROM RIGHT-ANGLE TO INLINE



Remove and reverse duct flanges and access panel positions on housing.

For correct intake and exhaust duct size, see table below

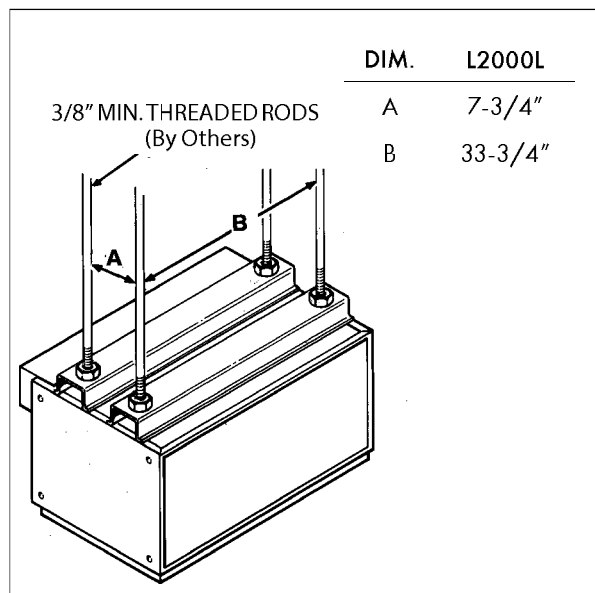
Model	Intake Duct Size	Exhaust Duct Size
L2000L	12-3/8" x 35-3/4"	7-3/4" x 33-3/4"

**Installer: Leave this manual  
with the homeowner.**

**Homeowner: Use and Care  
information on page 3.**

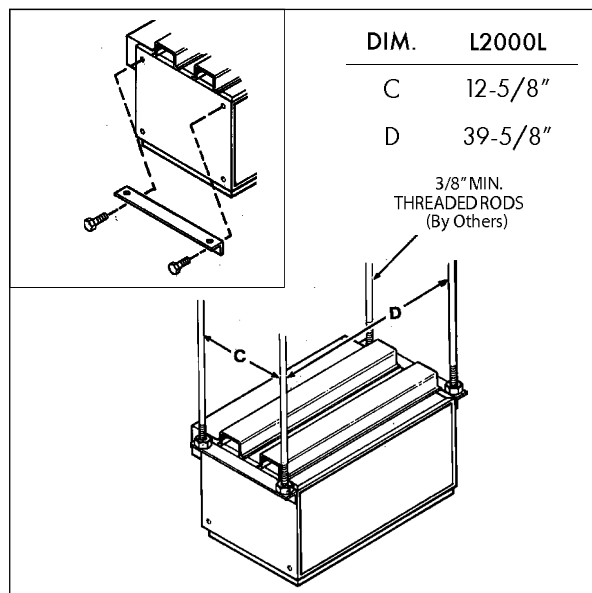
## MOUNTING OPTIONS

Provide solid support to minimize sound levels. There are two basic mounting methods for these units.



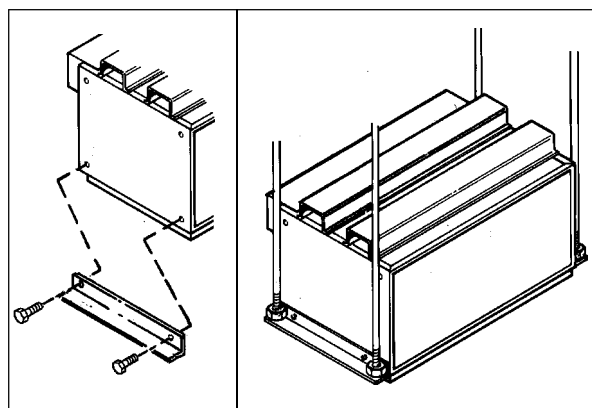
*Typical mounting with threaded rod through mounting channels on top of housing.*

## MOUNTING OPTIONS



*Mounting with threaded rod through adjustable mounting brackets located at top of housing.*

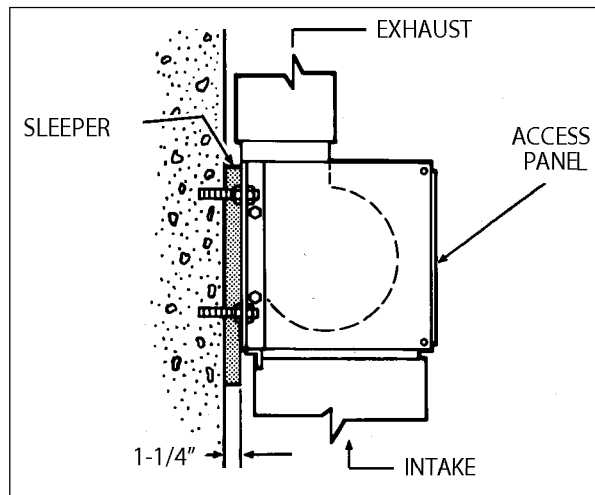
Mounting brackets can be bolted to housing ends in a variety of configurations. Use screws and nuts provided in parts bag.



*Mounting with threaded rods through adjustable mounting brackets located at bottom of housing.*

If installing unit as a ceiling ventilator, make sure that either duct flanges or housing will be flush with finished ceiling. Duct flanges may be removed and discarded if they interfere with a ceiling installation.

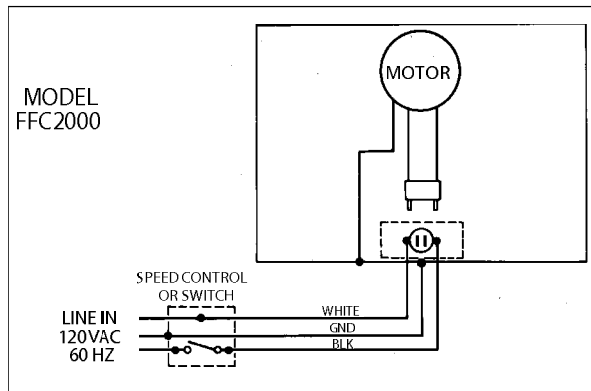
## MOUNTING OPTIONS



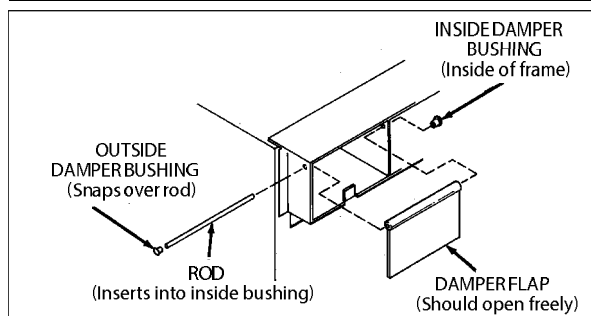
Typical wall mounting with 3/8" threaded fasteners (by others) through mounting brackets.

## ELECTRICAL CONNECTIONS

Connect electrical power cable to housing with proper connector for type of cable used. Provide 6" leads inside wiring box.



## ACCESSORY INSTALLATIONS



Install damper flap using rod provided.

## USE AND CARE

Ventilator is designed for continuous operation. If desired, it may be controlled using an on/off switch or a solid-state, variable speed control. Follow wiring instructions packed with control, and adhere to all local and state codes, and the National Electrical Code.



**WARNING:** To reduce the risk of electric shock, disconnect from power supply before servicing.

**To clean grille:** Use appropriate vacuum attachment or remove grille and clean with a soft cloth and mild soap or detergent. Dry grille thoroughly before reinstalling.

**To clean blower assembly:** Remove grille, unplug blower from housing, remove blower mounting nuts, and carefully remove blower from housing. Use appropriate vacuum attachment or a soft cloth and mild soap or detergent to clean blower discharge area and wheel. **DO NOT ALLOW WATER TO ENTER MOTOR.** Make sure blower assembly is completely dry before reinstalling.

Motor is permanently lubricated. Do not oil or disassemble motor.

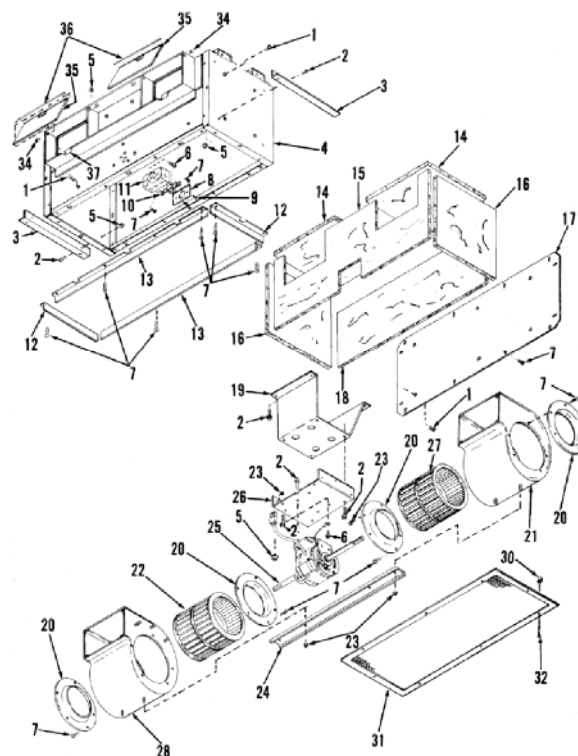
## SERVICE PARTS

KEY NO.	PART NO.	QTY.	DESCRIPTION
1	99420466	27	Insulation Clip
2	99170261	16	#5/16 - 18 x ½ Serrated Hex Head Screw
3	98006462	2	Mounting Bracket
4	97008107	1	Cabinet Body
5	93260447	12	#5/16 - 18 Lock Nut
6	99150471	2	#10-32 x ½ Green Ground Screw
7	99150490	42	#10B x 3/8 Serrated Pan Head Screw
8	99270658	1	Outlet Box Cover
9	99160319	2	#6-32 x 3/8 Machine Screw
10	99270656	1	Receptacle
11	99270659	1	Outlet Box
12	98006364	2	Duct Inlet Flange - Short
13	98006363	2	Duct Inlet Flange - Long
14	99500335	2	Bottom Panel Insulation
15	99500333	1	Back Panel Insulation
16	99500334	2	End Panel Insulation
17	98006699	1	Access Panel
18	99500336	1	Access Panel Insulation
19	97007450	1	Blower Platform
20	98006475	4	Venturi Ring
21	97007453	1	Right Hand Scroll
22	99020172	1	Blower Wheel - Clockwise
23	99260477	10	¼-20 Lock Nut
24	98006365	1	Blower Support Channel
25	99080194	1	Motor
26	98006381	1	Motor Platform
27	99020173	1	Blower Wheel-Counter-Clockwise
28	97007452	1	Left Hand Scroll
29	G-102	1	Grille Kit (contains Key Nos. 30, 31 & 32)
30	99420470	8	Grille Nut
31	98006477	1	Grille
32	99150472	8	#8-18 x 1 ¼ Grille Screw
33	D-100	1	Damper Kit (contains Key Nos. 34, 35, 36 & 37)
34	99100379	4	Damper Bushing
35	98006479	2	Damper Flap
36	98006481	2	Damper Rod
37	99760002	2	Damper Flap Magnet
**	97007448	1	Parts Bag (contains 4 ea. of Key Nos. 2 & 5)

Order replacement parts by PART NO. - not by KEY NO.

\*\* Not Shown

## SERVICE PARTS



## WARRANTY

### ONE YEAR LIMITED WARRANTY

Soler & Palau Braidert Air Products JencoFan, warrants all products to be free from defects in material or workmanship for a period of one year from date of shipment. If it appears within one year from date of shipment by the Company to the original purchaser that any such ventilator or the material used therein does not meet the warranties specified above and the purchaser notifies the Company promptly, the Company agrees to remedy any such defect, at the company's option.

This warranty shall not apply to any equipment which has been repaired or altered in any way so as, in the company's judgement, to affect its performance or reliability, nor which has been improperly installed or subjected to misuse, negligence, or accident. Neither shall this warranty apply to labor to remove or install defective parts, profits lost due to failure of the ventilator or electric motors or belts. Electric motors, however, carry the warranty of the motor manufacturer.

This warranty is expressly in lieu of all other warranties expressed or implied, and of all other obligations or liabilities on the company's part. The company neither assumes, nor authorizes any representative or other persons to assume for it, any other liability in connection with the sale of its equipment.