

Drawer Slides Double-Wall Drawer System



HÄFELE

Häfele Moovit®

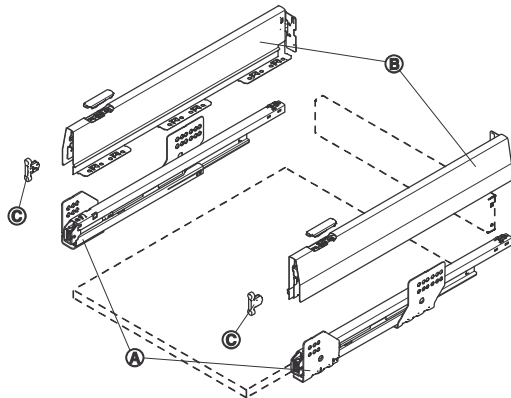
- 3 finishes available
- Integrated Soft & Silent mechanism for a smooth and consistent close
- Quick and simple assembly and installation
- Tool-free drawer front assembly and removal
- Numerous accessories are available to customize drawers
- Heavy duty weight rating: 50 kg (110 lbs.) and 70 kg (154 lbs.)
- Convenient adjustment location allows for quick and simple vertical and horizontal adjustment from the top

soft&silent)))



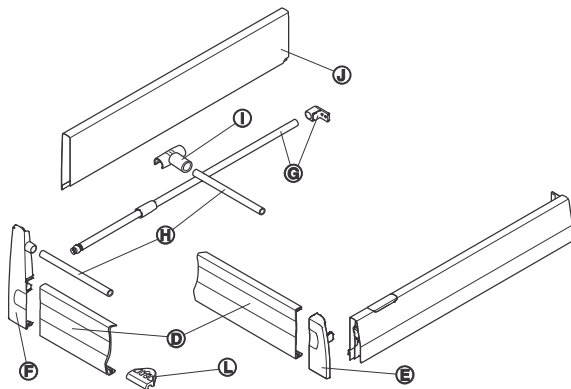
Standard Drawer System

- A:** Full extension drawer slide with integrated soft and silent mechanism
B: Drawer side profiles
C: Drawer front fixing brackets

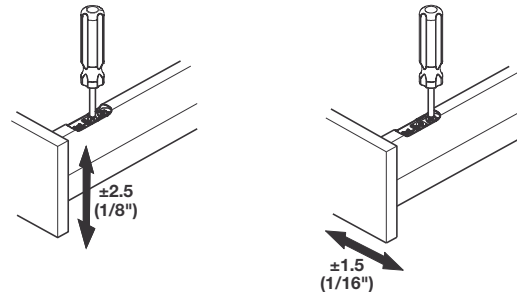


Internal Drawer System

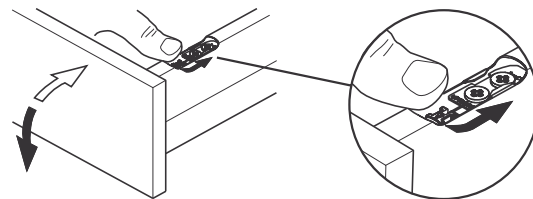
- D:** Front panel for internal drawers
E: Front fixing brackets for internal drawers
F: Front fixing brackets for internal drawers with railing
G, H, I: Railing set
J: Height extension panel
 (G, H, I and J can be used on Standard Drawer System also)
L: Stabilizing plate



Convenient height and side adjustment from the top.



No tools required for mounting and removing the drawer front



Calculation of Drawer Dimensions

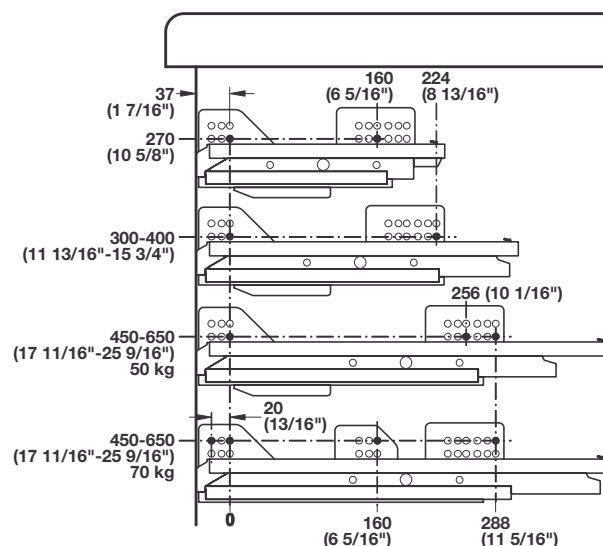
- 5/8" material required for drawer bottom and back
- Drawer Bottom Width = Internal cabinet width minus 62 mm
- Drawer Bottom Depth = Moovit profile length minus 3 mm
- Drawer Back Height = 69 mm for standard profile
157 mm with height extension panel
- Drawer Back Width = same as bottom
- Drawer Front Fixing Bracket positioning = ICW-44 mm centered

Dimensional data not binding. We reserve the right to alter specifications without notice.

Häfele MX

Heavy duty weight rating: 50 kg (110 lbs.) and 70 kg (154 lbs.)

- Integrated Soft & Silent mechanism for a smooth and consistent close
 - Rack and pinion provides controlled and gentle movement
 - Full extension slides allow maximum access to drawer
 - 5/8" material is required for the drawer bottom and back
- Profile height: 92 mm (3 5/8")



Drawer Slides and Side Profiles

Material: Slides: Steel; Finish: zinc-plated

Profiles: Steel, epoxy-coated; Cover Caps: Plastic

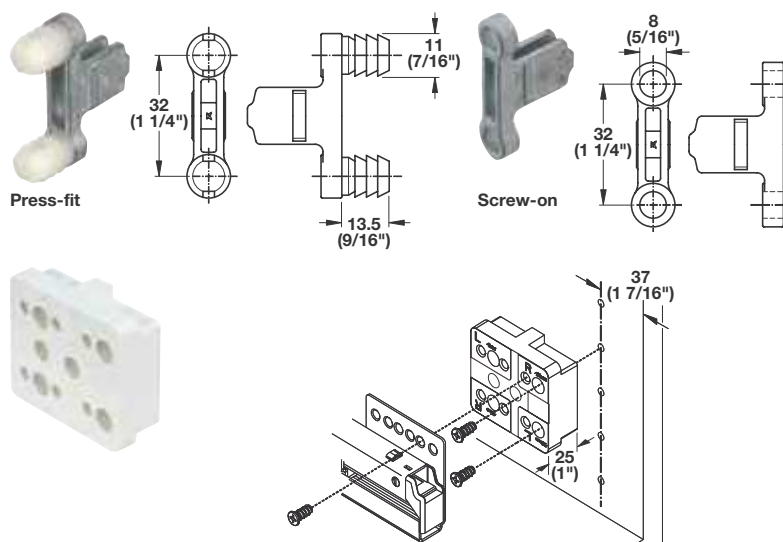
Length	White		Anthracite		Champagne	
	50 kg	70 kg	50 kg	70 kg	50 kg	70 kg
270 (10 5/8")	551.54.720	-	551.54.320	-	551.54.820	-
300 (11 13/16")	551.54.721	-	551.54.321	-	551.54.821	-
350 (13 3/4")	551.54.722	-	551.54.322	-	551.54.822	-
400 (15 3/4")	551.54.723	-	551.54.323	-	551.54.823	-
450 (17 11/16")	551.54.724	-	551.54.324	-	551.54.824	-
500 (19 11/16")	551.54.725	-	551.54.325	-	551.54.825	-
550 (21 5/8")	551.54.726	551.54.746	551.54.326	551.54.346	551.54.826	551.54.846
600 (23 5/8")	551.54.727	551.54.747	551.54.327	551.54.347	551.54.827	551.54.847
650 (25 9/16")	551.54.728	551.54.748	551.54.328	551.54.348	551.54.828	551.54.848

Supplied With

1 Left and 1 Right drawer slide, 1 Left and 1 Right cabinet profile, 2 Cover caps, Pre-attached back brackets

Note

Order drawer front fixing brackets separately.



Drawer Front Fixing Brackets

Material: Zinc

Mounting	Item No.
press-fit	553.59.995
screw-on	553.59.991

Note

Order separately, not included in the set.
2 pcs. required for one pair of slides.

Spacers

- Can be used as blocking in face frame applications
- Required for internal drawers behind a hinged door

Material: Plastic

Color	Item No.
white	553.62.700

Note

Order separately, not included in the set.
2 pcs. required for each slide side.

Varianta screws

page 11.142

Dimensional data not binding. We reserve the right to alter specifications without notice.

Häfele MX



Railing Set

- Finish coordinates with profile
- Rails offer +/- 2 mm tilt adjustment
Ø11 mm (7/16")

Material: Slides: Steel, epoxy-coated
Adapters/Connector: Plastic

Length	Anthracite	Champagne	White
270 (10 5/8")	553.59.400	553.59.800	553.59.600
300 (11 13/16")	553.59.401	553.59.801	553.59.601
350 (13 3/4")	553.59.402	553.59.802	553.59.602
400 (15 3/4")	553.59.403	553.59.803	553.59.603
450 (17 11/16")	553.59.404	553.59.804	553.59.604
500 (19 11/16")	553.59.405	553.59.805	553.59.605
550 (21 5/8")	553.59.406	553.59.806	553.59.606
600 (23 5/8")	553.59.407	553.59.807	553.59.607
650 (25 9/16")	553.59.408	553.59.808	553.59.608

Supplied With

2 Rails
4 Front brackets: 2 press fit and 2 screw-mount
2 Rear panel holders



Cross Rail

- Cross rail is cut 68 mm (2 11/16") less than the inside cabinet width
Length: 1102 mm (43 1/8")
Ø11 mm (7/16")

Material: Steel, epoxy-coated

Finish	Item No.
anthracite	553.59.434
champagne	553.59.834
white	553.59.634

Note

Required for 120 x 40 mm Internal Drawer Bracket.

Cross Rail Holder

Material: Plastic

Finish	Item No.
anthracite	553.59.439
champagne	553.59.839
white	553.59.639

Cover Cap

Material: Plastic, light gray

Description	Anthracite	Champagne	White
blank	551.61.381	553.59.881	551.61.781
with Häfele logo	551.61.380	553.59.880	551.61.780

Supplied With

1 Right and 1 Left cover cap

Dimensions in mm
Inches are approximate

Dimensional data not binding. We reserve the right to alter specifications without notice.

Häfele MX

- Front panel finish matches perfectly to side profiles
 - Available in three lengths; can be cut to size
 - Can be used with or without rails
- Height: 95 mm (3 3/4")



Front Panel

- For internal drawers
- Front panel is cut 80 mm (3 1/8") less than the inside cabinet width

Material: Aluminum

Length	Anthracite	Champagne	White
488 (19 1/5")	551.61.311	553.61.811	553.61.611
788 (31")	551.61.315	553.61.815	553.61.615
1088 (42 13/16")	551.61.319	553.61.819	553.61.619



Internal Drawer Brackets

- Easy assembly to panel, profile and rail with #6 x 3/4" Pan Head screw (order separately, see below)
- H x W: 95 x 40 mm (3 3/4" x 1 9/16")

Material: Plastic

Color	Item No.
anthracite	551.61.392
champagne	553.61.892
white	553.61.692



Internal Drawer Brackets

- For use with railing set (order separately)
 - Easy assembly to panel, profile and rail with #6 x 3/4" Pan Head screw (order separately, see below)
- H x W: 120 x 40 mm (4 3/4" x 1 9/16")

Material: Plastic

Color	Item No.
anthracite	551.61.391
champagne	553.61.891
white	553.61.691

Note

Requires Cross Rail and Railing Set, order separately.

#6 x 3/4" Pan Head Screw

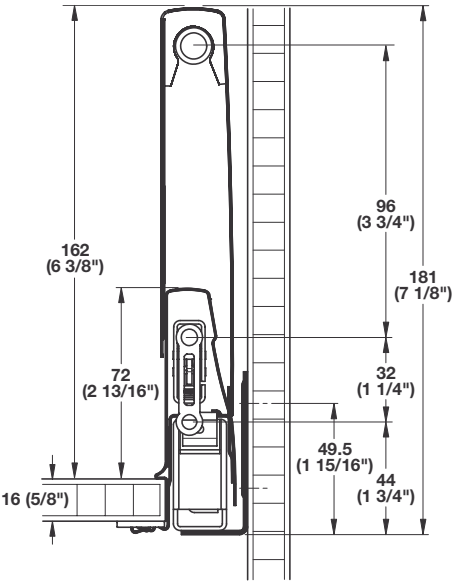
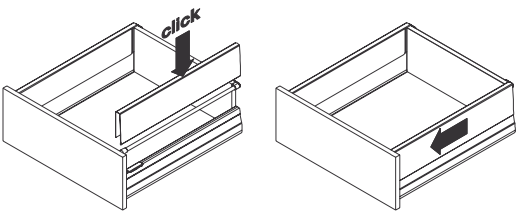
Material: Steel

Finish	Item No.
black oxide	010.83.045



Häfele MX

- Quickly and simply extends the height of the drawer by clipping over the railing and onto the drawer side profile
- Panel finish matches perfectly to the profile
- Refer to Section 3 - Drawer Organization for accessories



Height Extension Panel

Material: Steel, epoxy-coated

Length	Anthracite	Champagne	White
270 (10 5/8")	551.60.300	553.60.800	553.60.600
300 (11 13/16")	551.60.301	553.60.801	553.60.601
350 (13 3/4")	551.60.302	553.60.802	553.60.602
400 (15 3/4")	551.60.303	553.60.803	553.60.603
450 (17 11/16")	551.60.304	553.60.804	553.60.604
500 (19 11/16")	551.60.305	553.60.805	553.60.605
550 (21 5/8")	551.60.306	553.60.806	553.60.606
600 (23 5/8")	551.60.307	553.60.807	553.60.607
650 (25 9/16")	551.60.308	553.60.808	553.60.608

You can change the look of your drawer and optimize storage space in three simple steps.

Drawer Side Profile



Drawer Side Profile, Railing and Cross Rail



Drawer Side Profile, Railing and Height Extension Panel



Note

Cross Rail cannot be used with height extensions.

Dimensions in mm
Inches are approximate