

FVN62-3612-UNS

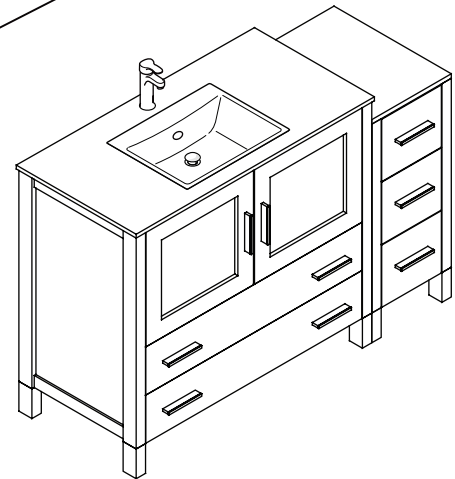
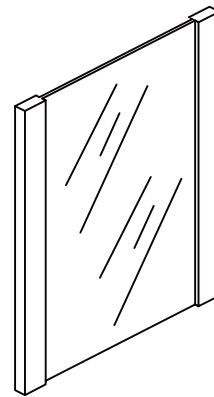
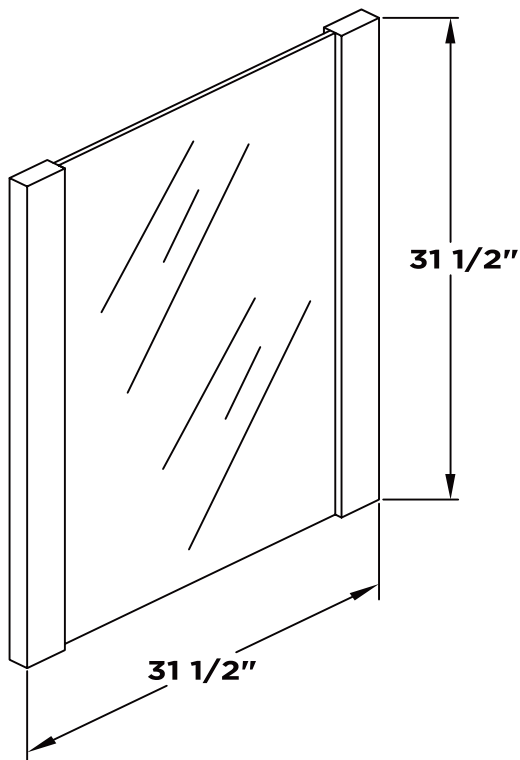
TORINO

INSTALLATION GUIDE

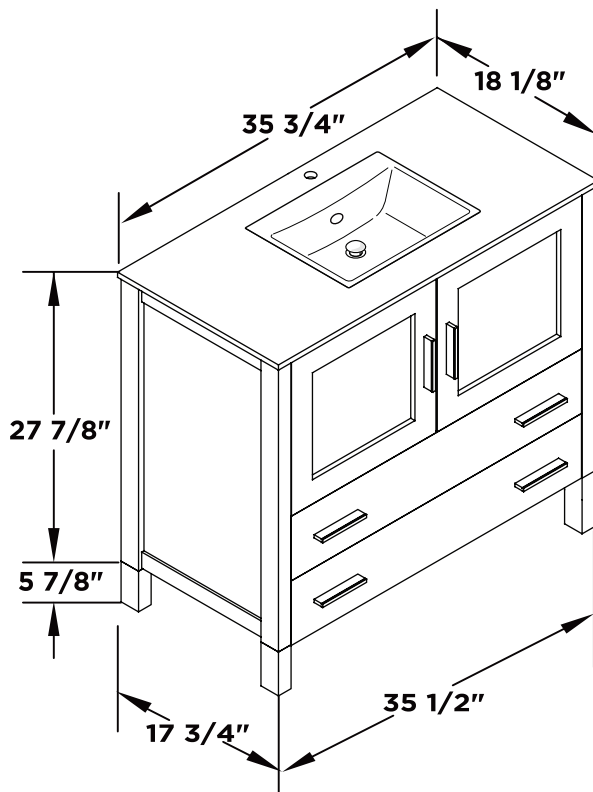
kitchensource.com
1.800.667.8721

FRESCA®

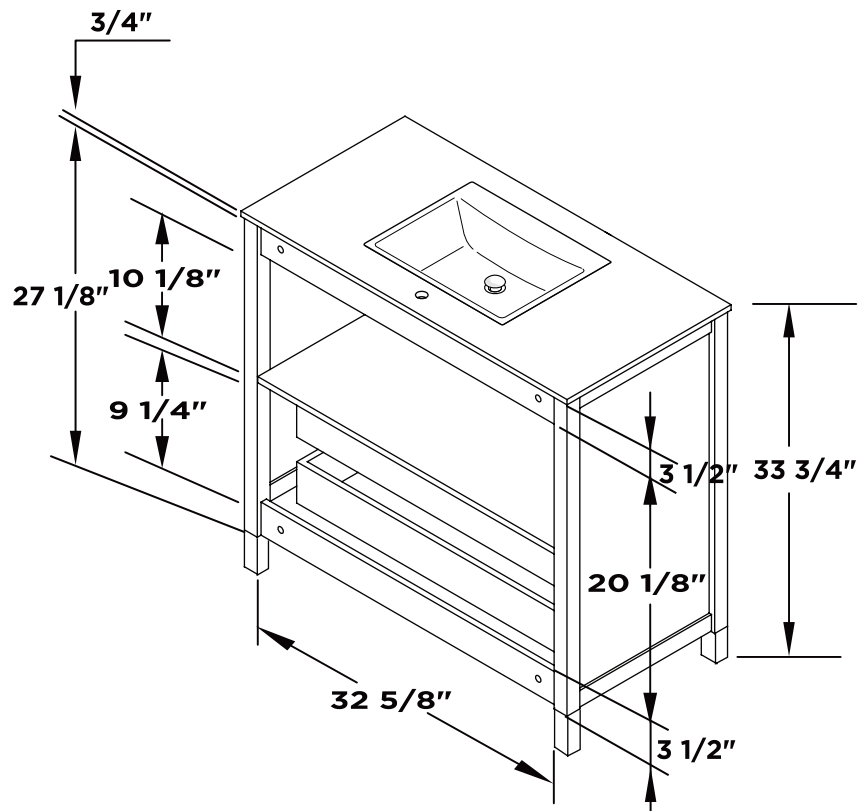
Mirror



Vanity Front



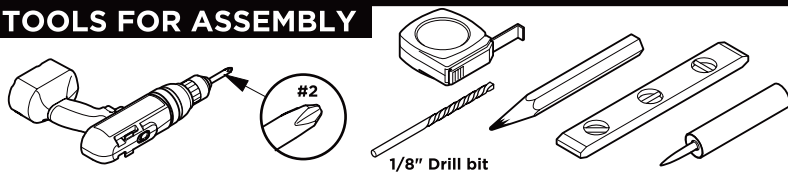
Vanity Back



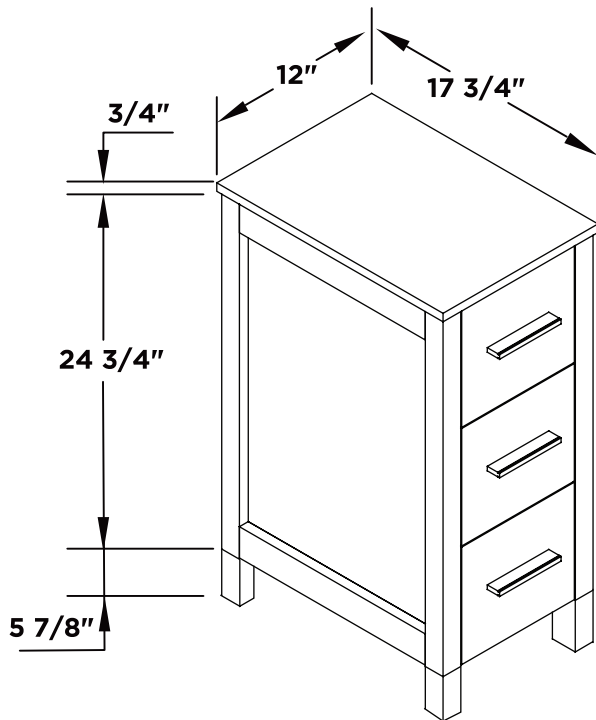
TORINO INSTALLATION GUIDE

PAGE 1

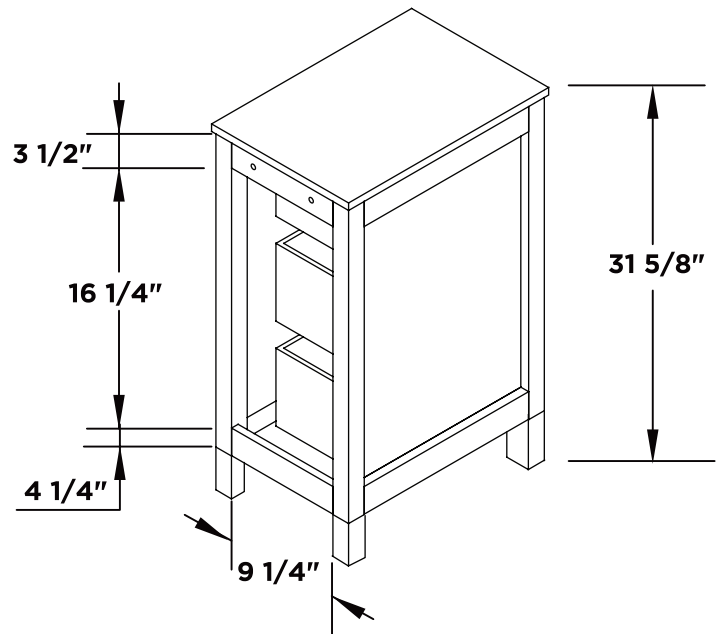
TOOLS FOR ASSEMBLY



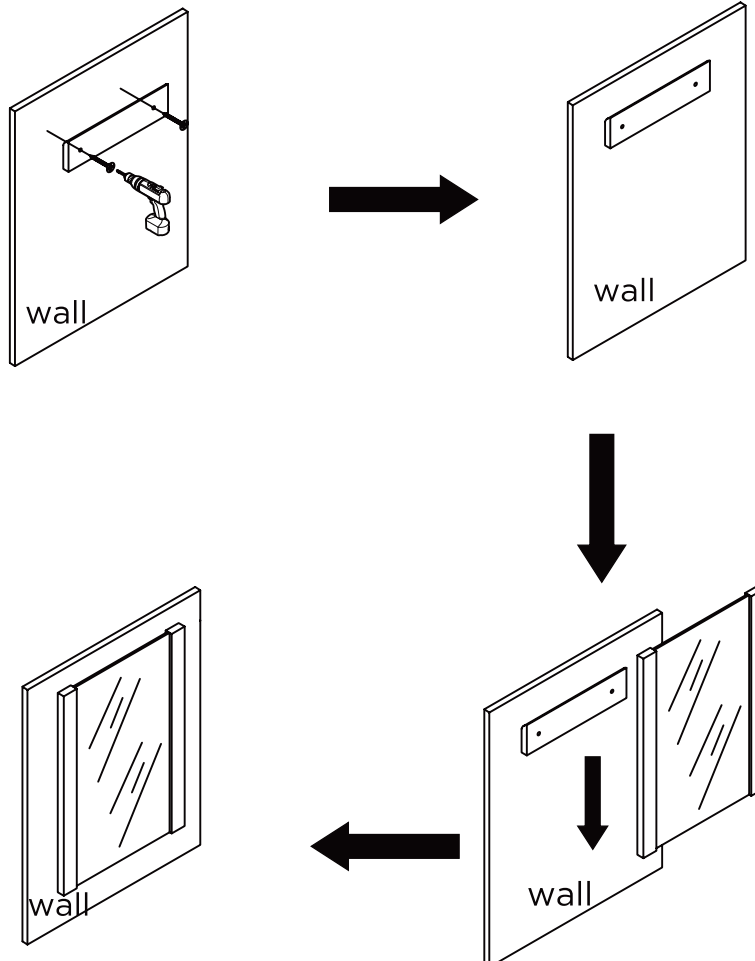
Side Cabinet Front



Side Cabinet Back

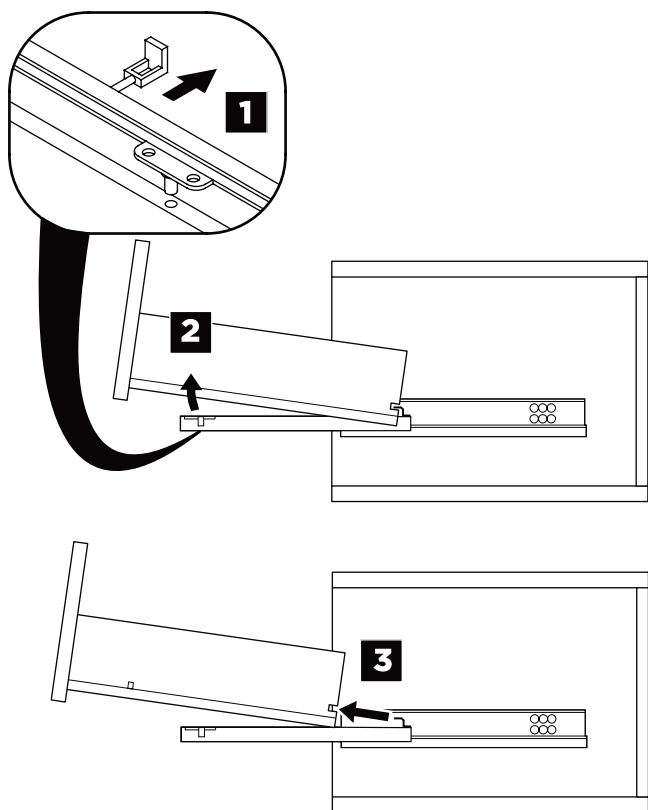


MIRROR INSTALLATION

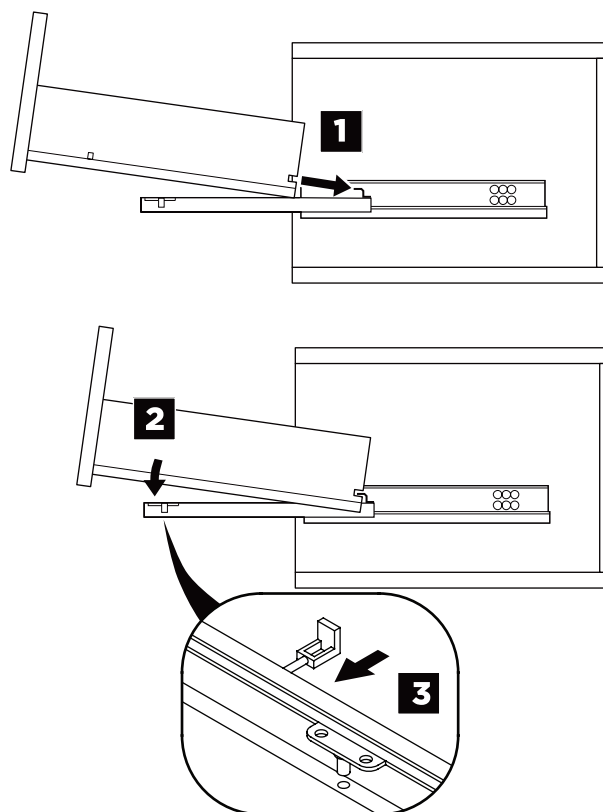


DRAWER REMOVAL & INSTALLATION

REMOVAL

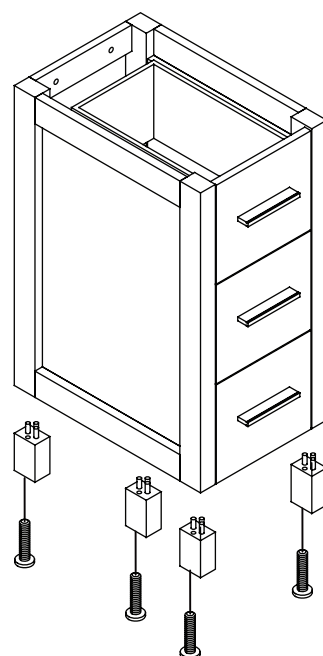
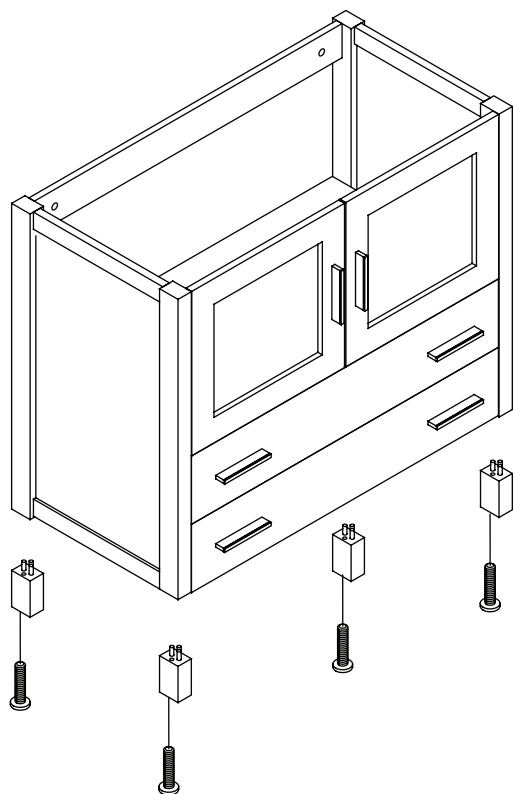


INSTALLATION



1

Install leg



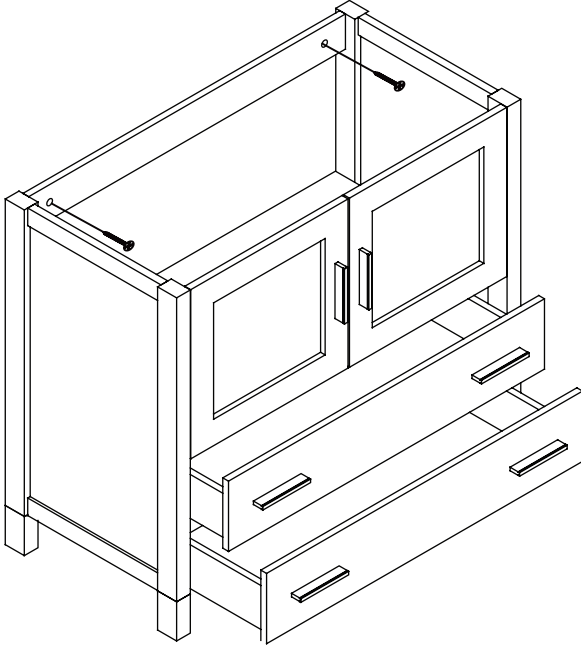
2

Remove side cabinet drawer

3

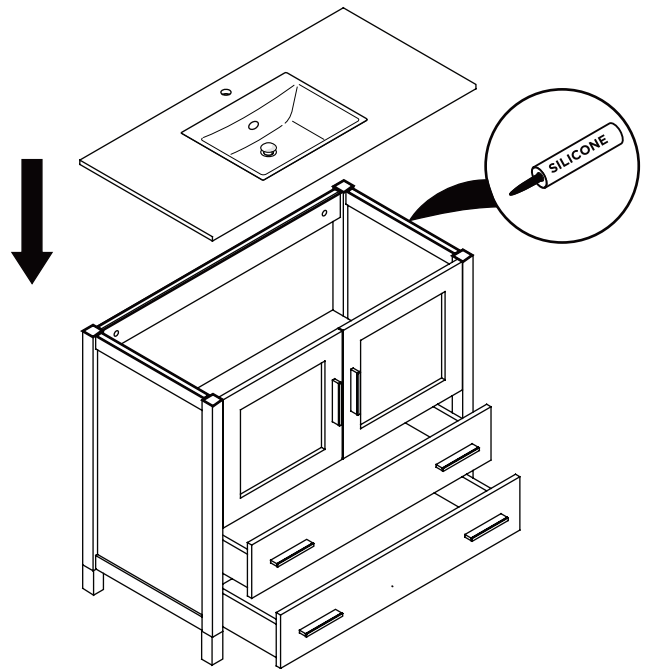
Install side cabinet

IMPORTANT: Consult an expert for the proper screws/bolts to use when attaching to various wall constructions. Screws provided do not attach to all wall construction types.



4

Install top panel

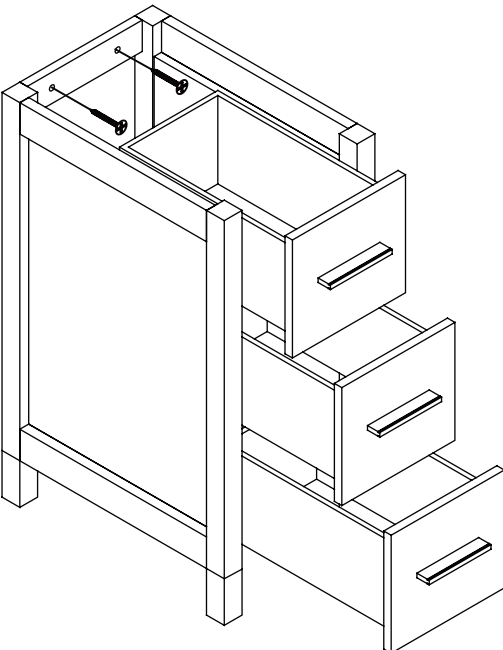


5

Remove side cabinet drawer

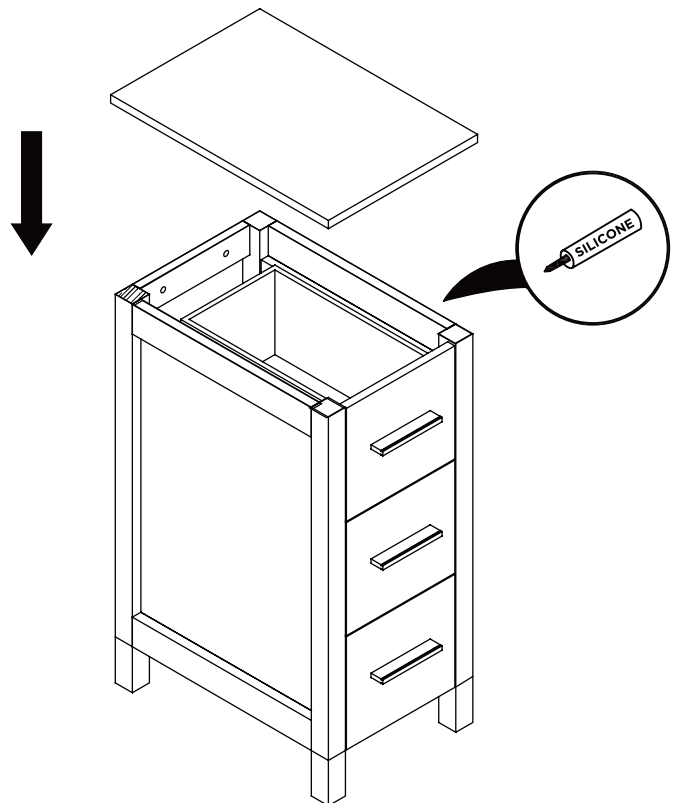
6

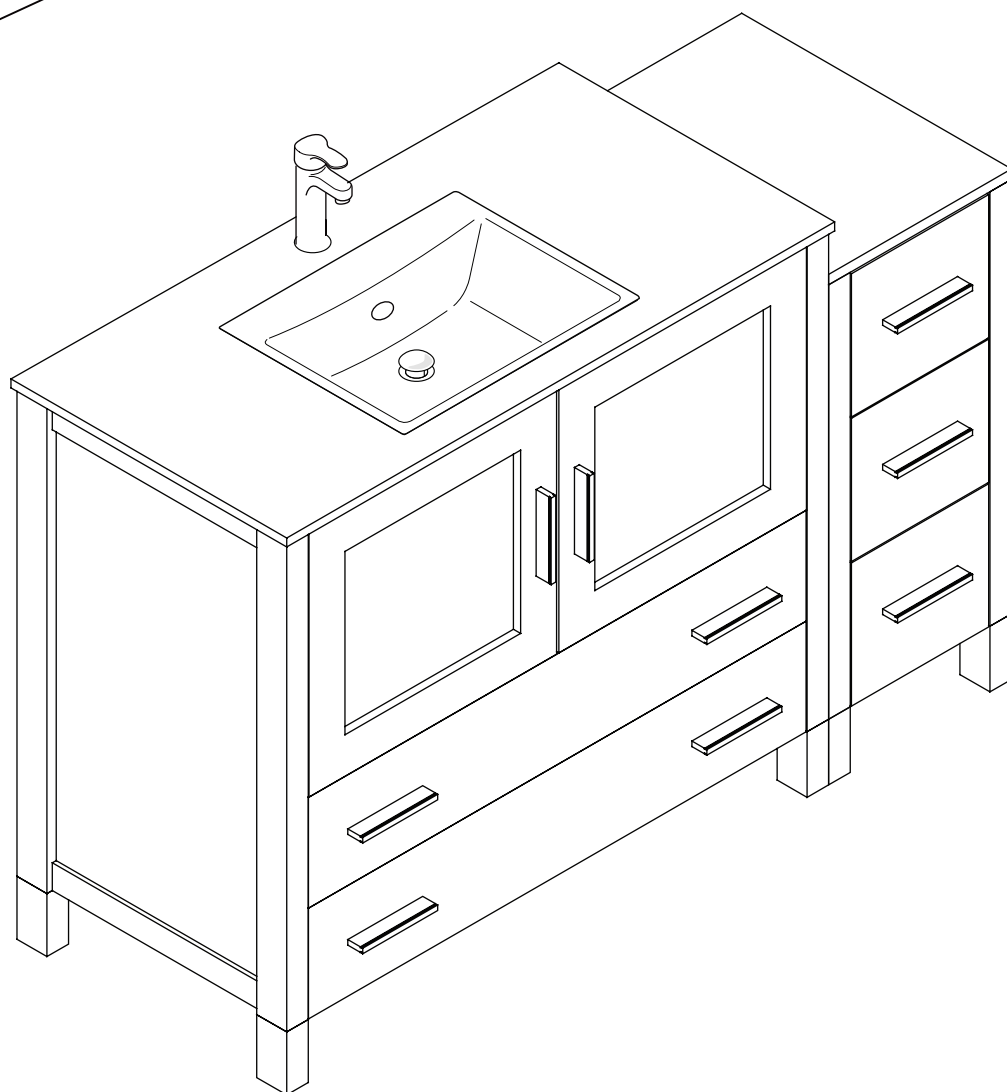
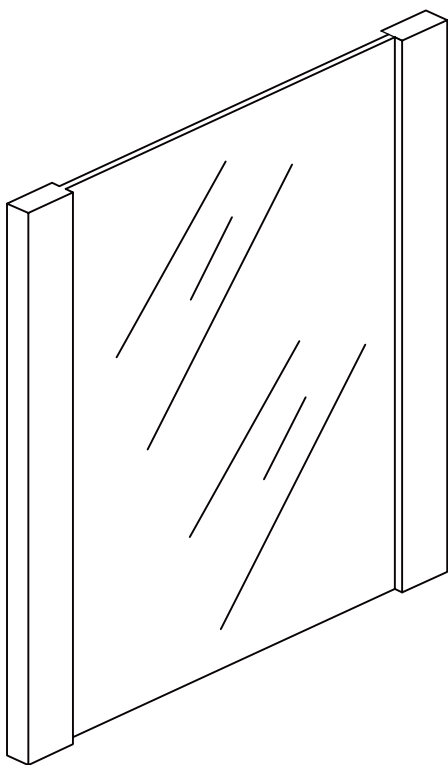
Install side cabinet



7

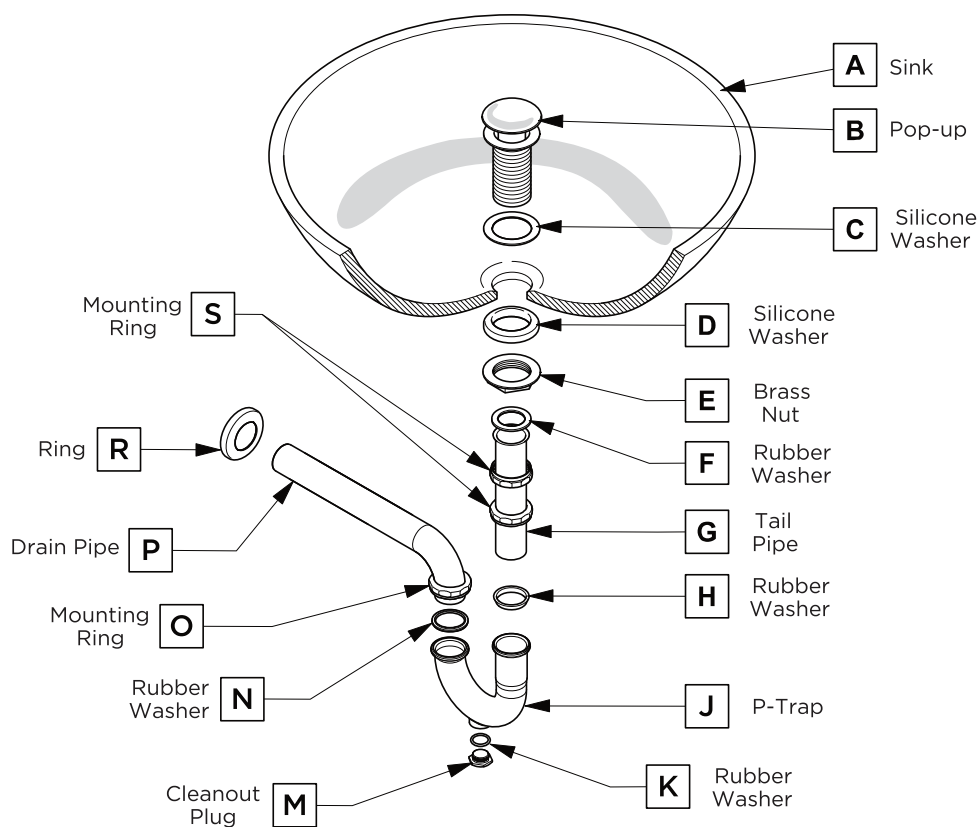
Install side cabinet top panel





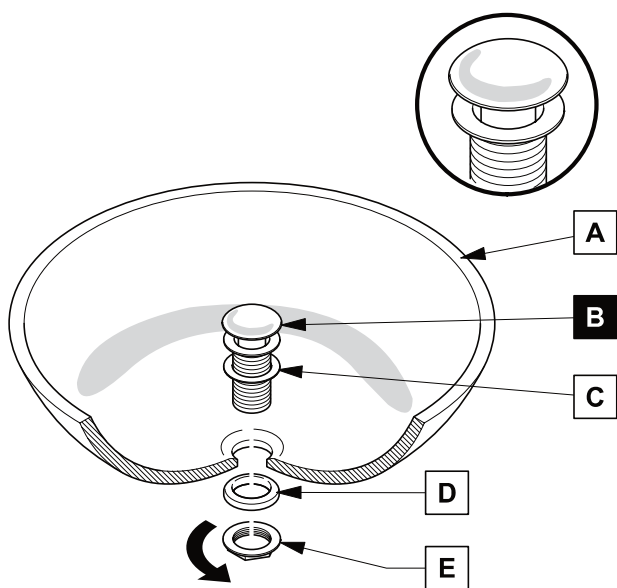
P-TRAP AND POP-UP INSTALLATION INSTRUCTIONS

Your item may appear slightly different from the illustration



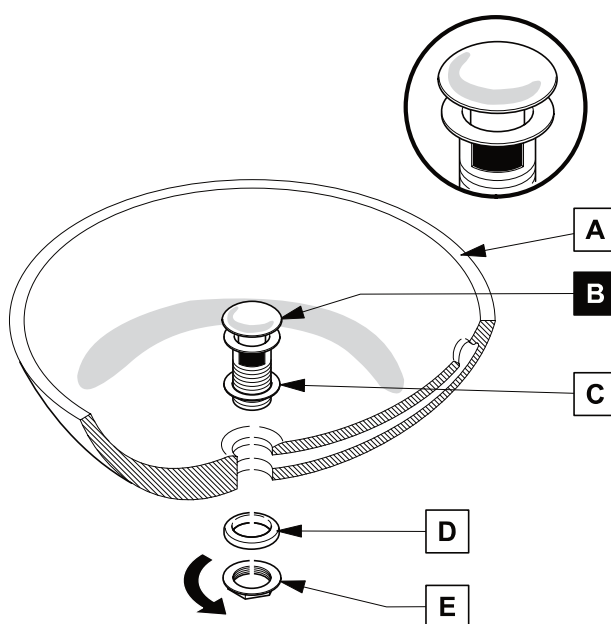
POP-UP INSTALLATION

FOR SINKS WITHOUT OVERFLOW



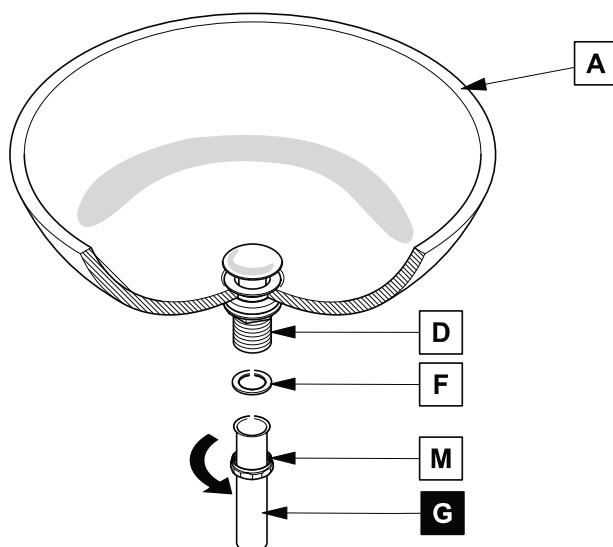
OR

FOR SINKS WITH OVERFLOW



1

Install tail pipe (G)



2

Install p-trap (J)

