

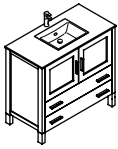


FVN6236-UNS TORINO

INSTALLATION GUIDE

CONTENTS:

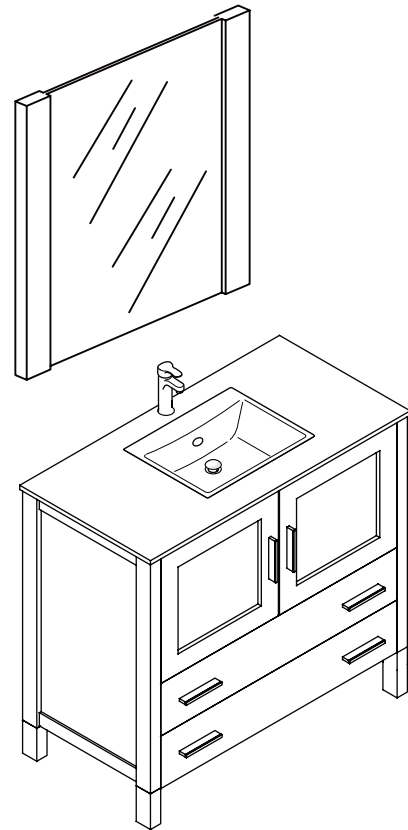
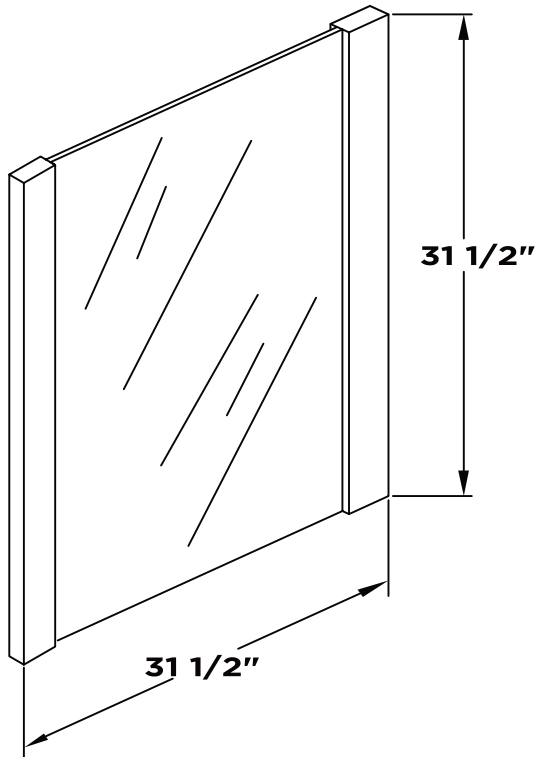
Cabinet	(FCB6236)	PAGE 3
Sink	(FVS6236)	PAGE 4
Mirror	(FMR6236)	PAGE 2



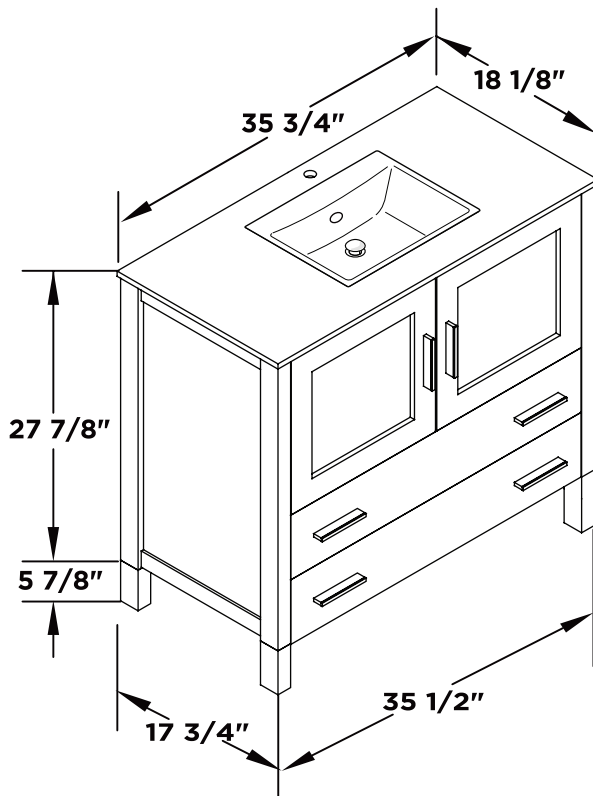
FVN6236-UNS TORINO INSTALLATION GUIDE



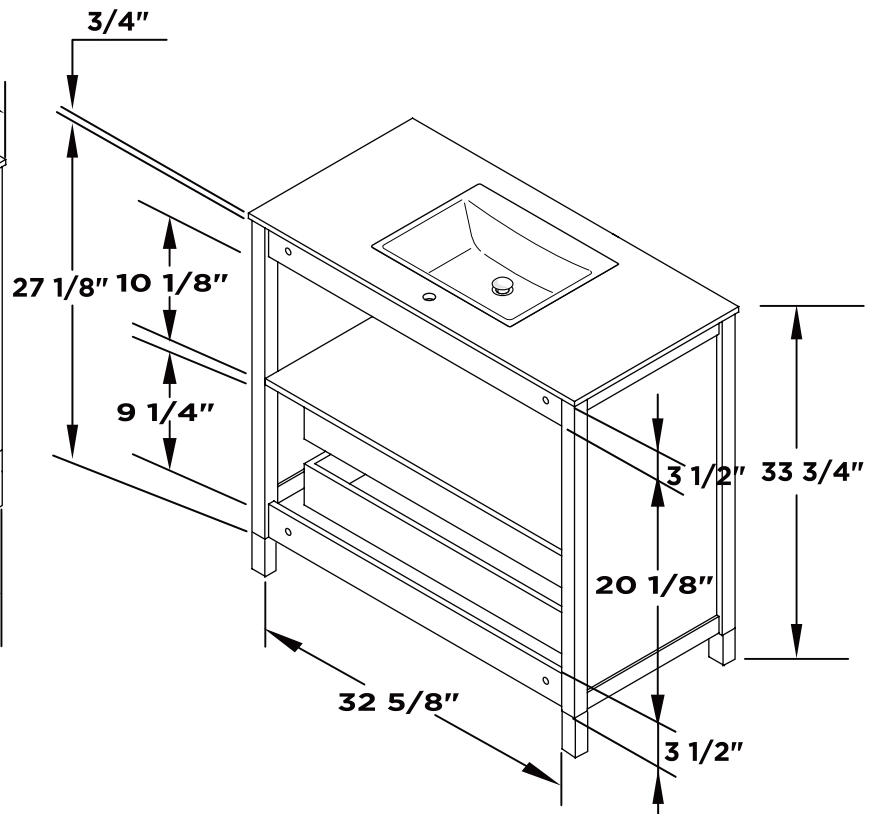
Mirror



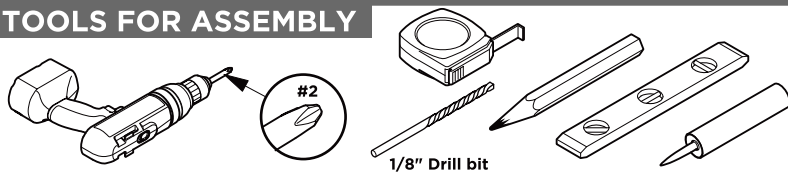
Vanity Front



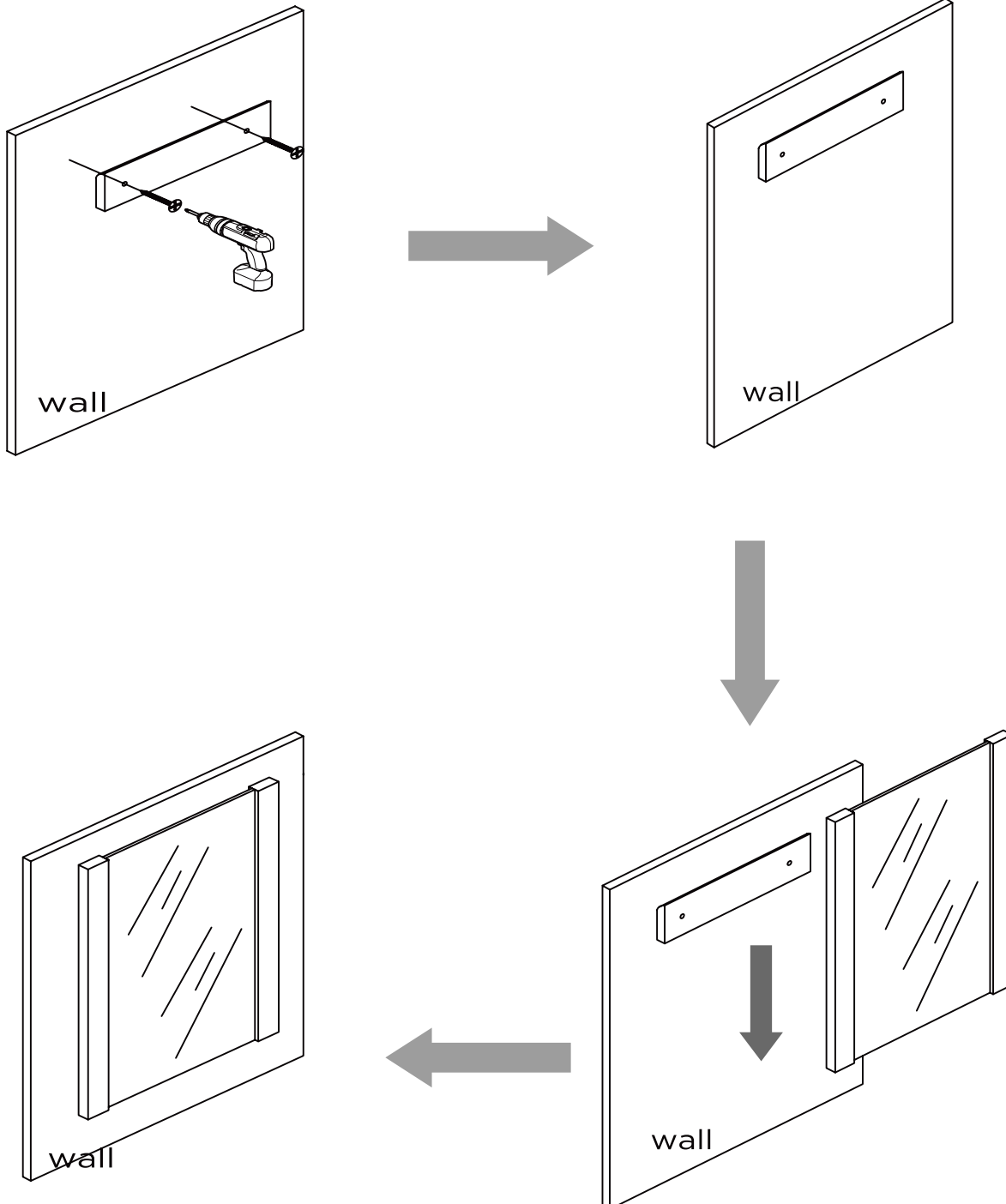
Vanity Back



TOOLS FOR ASSEMBLY

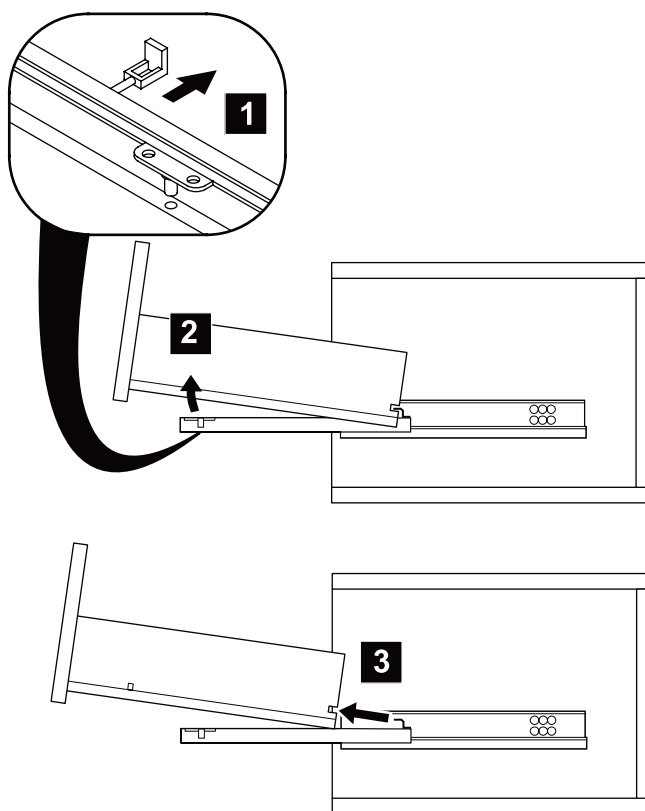


MIRROR INSTALLATION

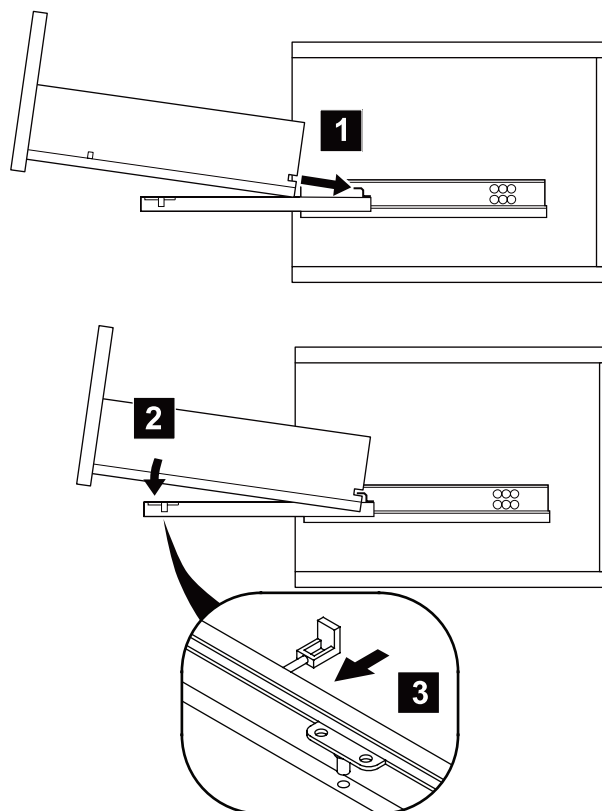


DRAWER REMOVAL & INSTALLATION

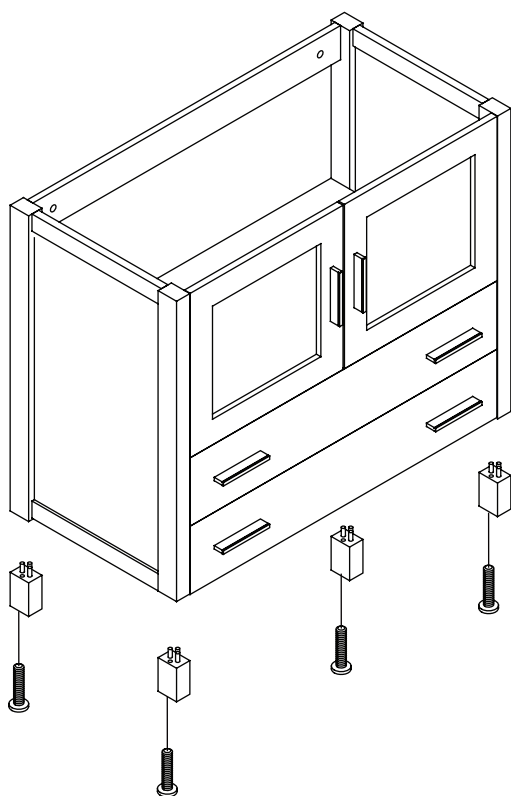
REMOVAL



INSTALLATION



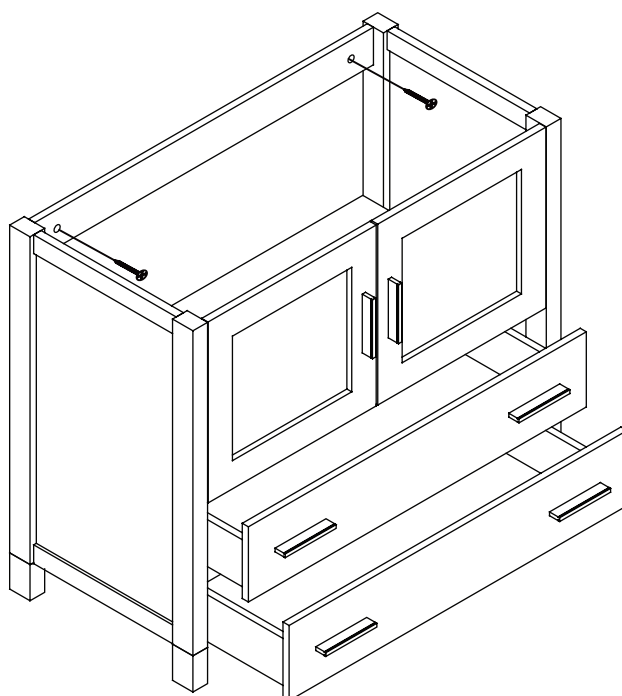
1 Install leg



2 Remove drawer

3 Install cabinet

IMPORTANT: Consult an expert for the proper screws/bolts to use when attaching to various wall constructions. Screws provided do not attach to all wall construction types.



FVN6236-UNS

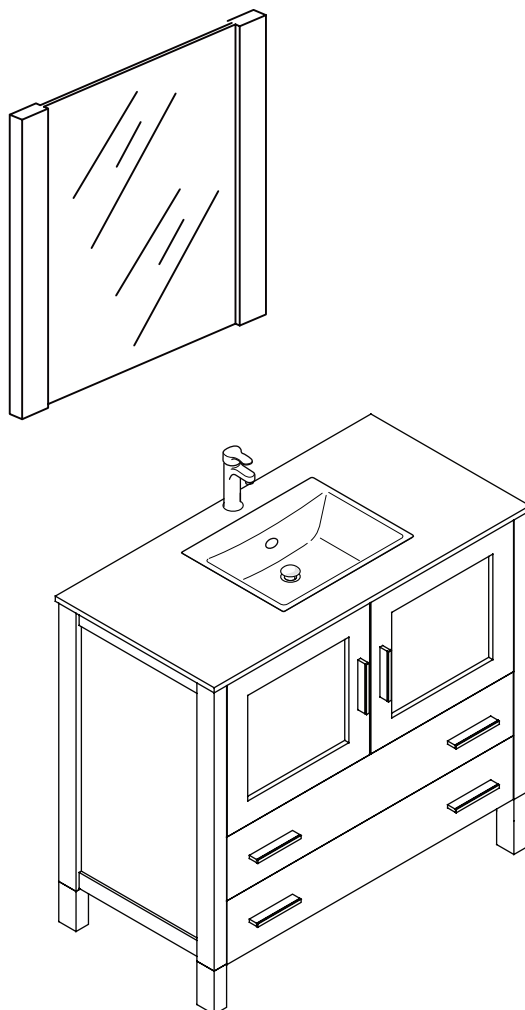
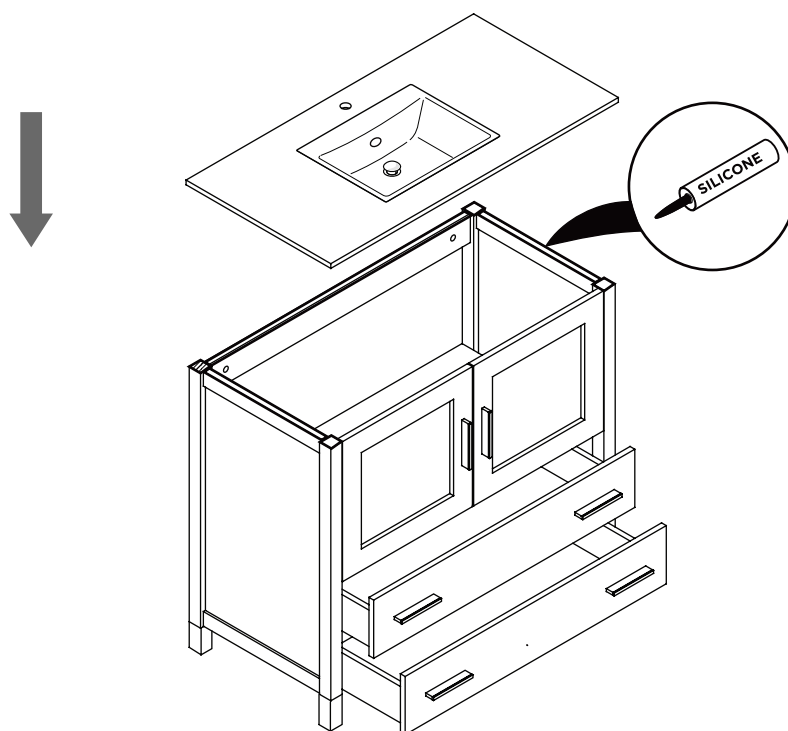
TORINO

INSTALLATION GUIDE

PAGE 3

4

Install top panel



FVN6236-UNS

TORINO

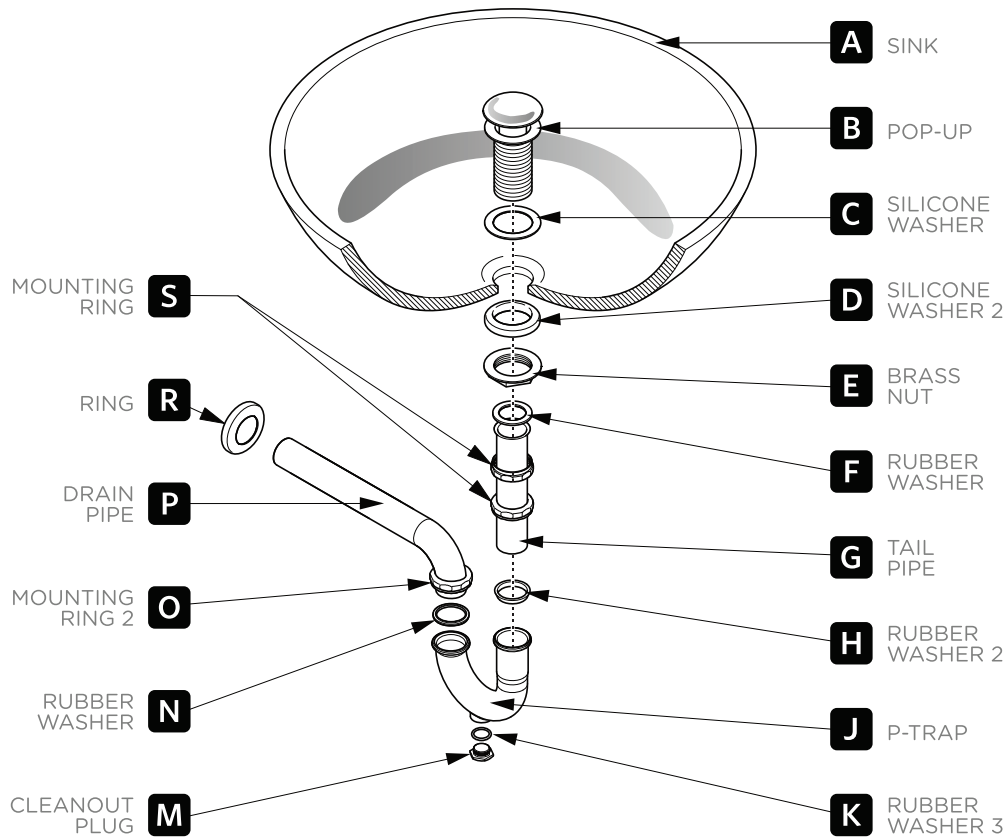
INSTALLATION GUIDE

PAGE 4

P-TRAP & POP-UP

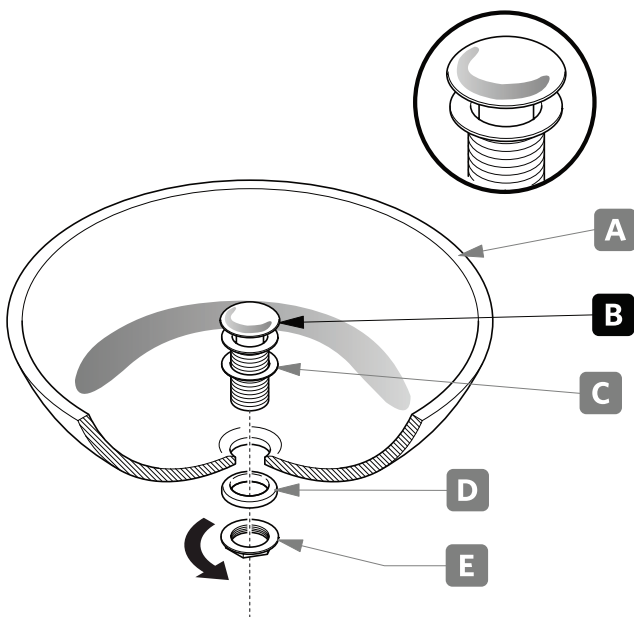
INSTALLATION INSTRUCTIONS

Your item may appear slightly different from the illustration.



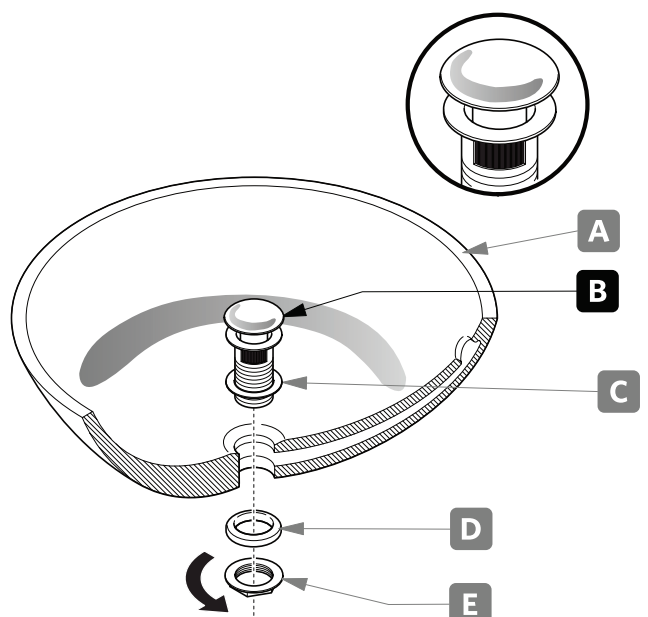
POP-UP INSTALLATION

FOR SINKS WITHOUT OVERFLOW



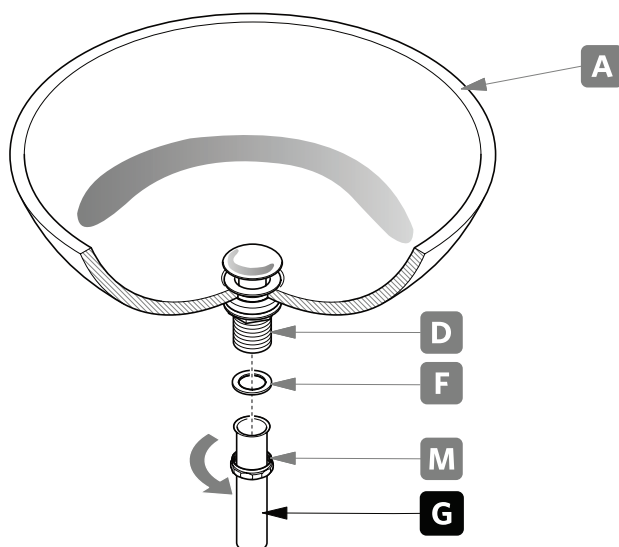
OR

FOR SINKS WITH OVERFLOW



P-TRAP INSTALLATION

1. Install tail pipe **(G)**.



2. Install P-trap **(J)**.

